

FAIRVIEW PLANTATION
SEC. 39, T 12 S, R 9 E, S.E. DIST.
OF LA. EAST OF THE MISSISSIPPI RIVER
ST. CHARLES PARISH, LA.

Date Council Chair

Date Chairman Planning & Zoning Commission

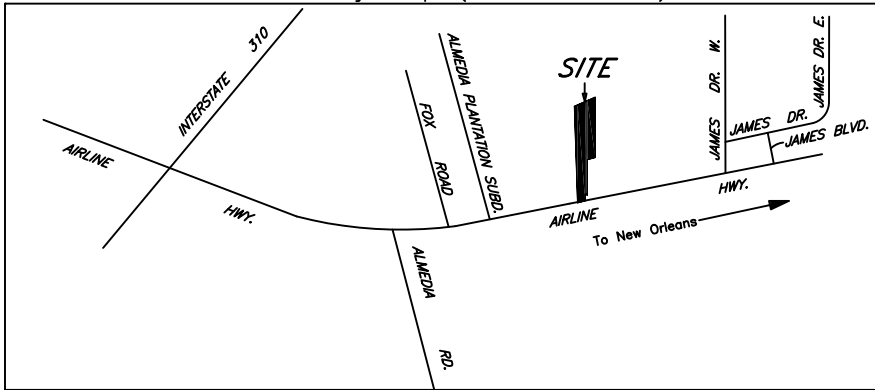
Date Parish President

Resubdivision of Parcel D-2A, Into Parcels D-2AA & D-2A-1, Fairview Plantation, Section 39, T 12 S, R 9 E, S.E. District of La. East of the Mississippi River, St. Charles Parish, La.

All necessary sewer, water and/or other utility extensions, relocations or modifications shall be made solely at the owner's expense.

This resubdivision was prepared using survey of Lot D-2A made August 4, 1999. Parcel D-2A was not resurveyed. Improvements and any incroachments that may exist on Parcel D-2A are not shown.

Vicinity Map (Not To Scale)



SUBD.

PLANTATION

ALMEDIA

PARCEL D-2AA

PARCEL D-2A

"DETAIL"
NOT TO SCALE

PARCEL D-2A-1
32,446.5 Sq.Ft.
0.744 Acres

NOT A PART
"Waffel House"

2245.46'
S1°46'E

N64°39'51"E
843.98'

N3°39'15"W
3595.94'

1280.88'
S1°46'E

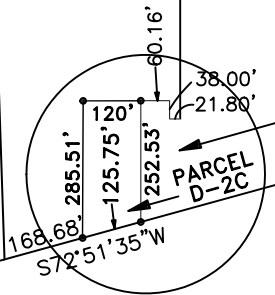
120'

285.51'

252.53'
N01°16'51"W
N02°25'15"W Grid

125.75'
S72°51'35"W

300'
S72°51'35"W



SEE
"DETAIL"

HIGHWAY



● Denotes 1/2" Iron Rod
Bearings are based on survey by
Mandle-Edwards Surveying, Inc. dated 8/4/99

THE SERVITUDES AND RESTRICTIONS SHOWN ON THIS SURVEY ARE LIMITED TO THOSE SET FORTH IN THE DESCRIPTION FURNISHED US AND THERE IS NO REPRESENTATION THAT ALL APPLICABLE SERVITUDES AND RESTRICTIONS ARE SHOWN HEREON. THE SURVEYOR HAS MADE NO TITLE SEARCH OR PUBLIC RECORD SEARCH IN COMPILING THE DATA FOR THIS SURVEY. IMPROVEMENTS MAY NOT BE TO SCALE FOR CLARITY. THE DIMENSIONS SHOWN PREVAIL OVER SCALE.

March 1, 2017
SURVEY CERTIFIED TO: BMB Real Estate, LLC

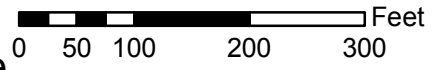
BY

I certify that this plat represents an actual ground survey made by me or under my direct supervision; surveyed as per the written property description furnished us; in accordance with the Louisiana "Standards of Practice for property boundary surveys" for a class C survey.

MANDLE-EDWARDS SURVEYING, INC.
LAND SURVEYORS - METAIRIE, LA.
4200 S. I-10 Service Road W., Suite 124
METAIRIE, LA. 70001 (504)733-2902
E-MAIL: info@mandle-edwards.com

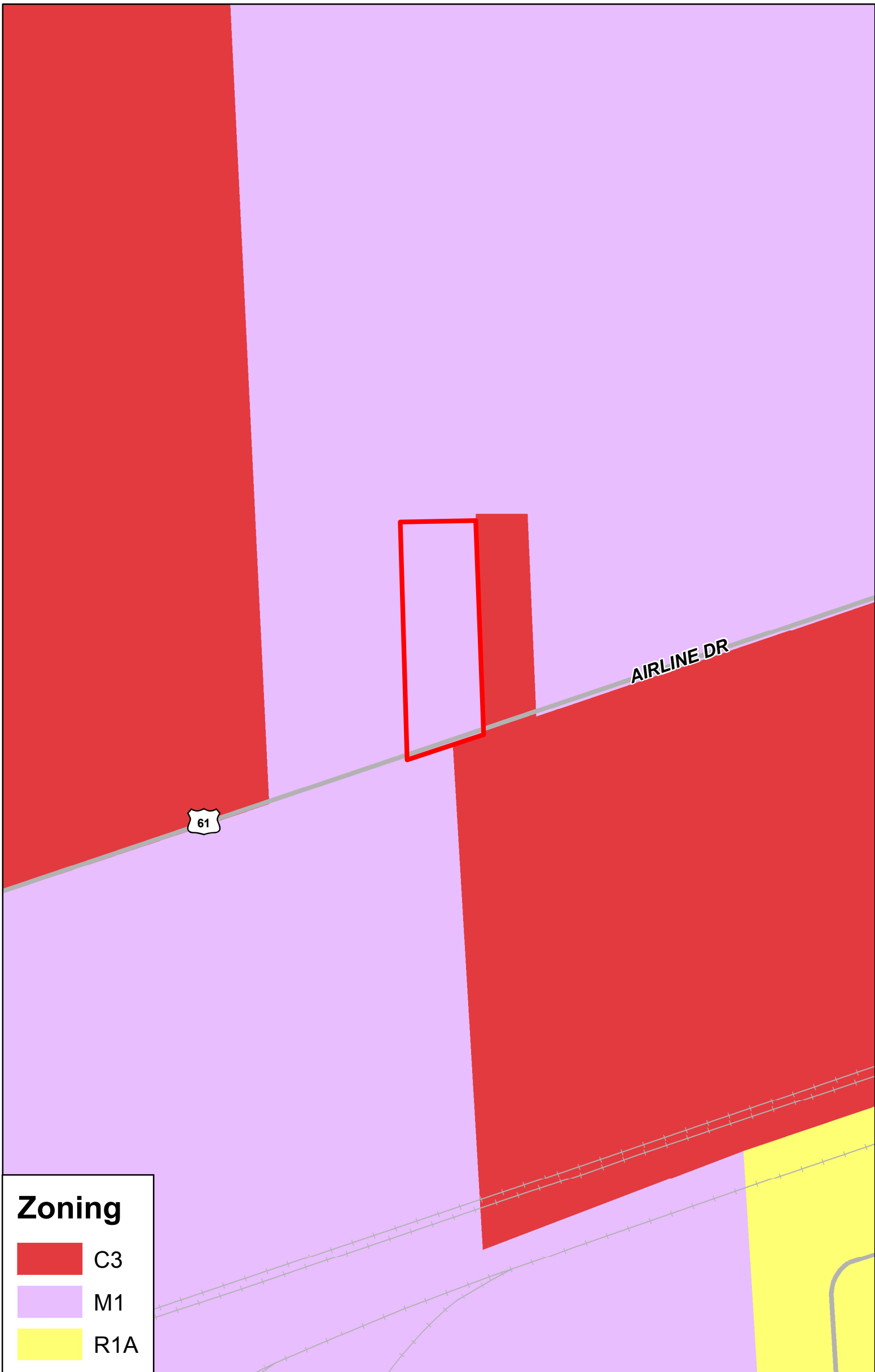
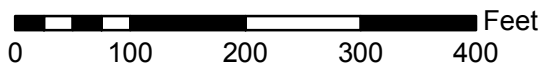
PZR 2017-07

Requested by Bruce Bourgeois for BMB Real Estate
For a Change of zoning from M-1 to C-3



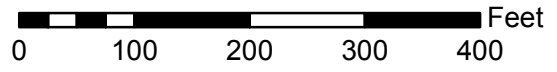
PZR-2017-07

Requested by: Bourgeois/BMB Real Estate
Rezoning from M-1 to C-3

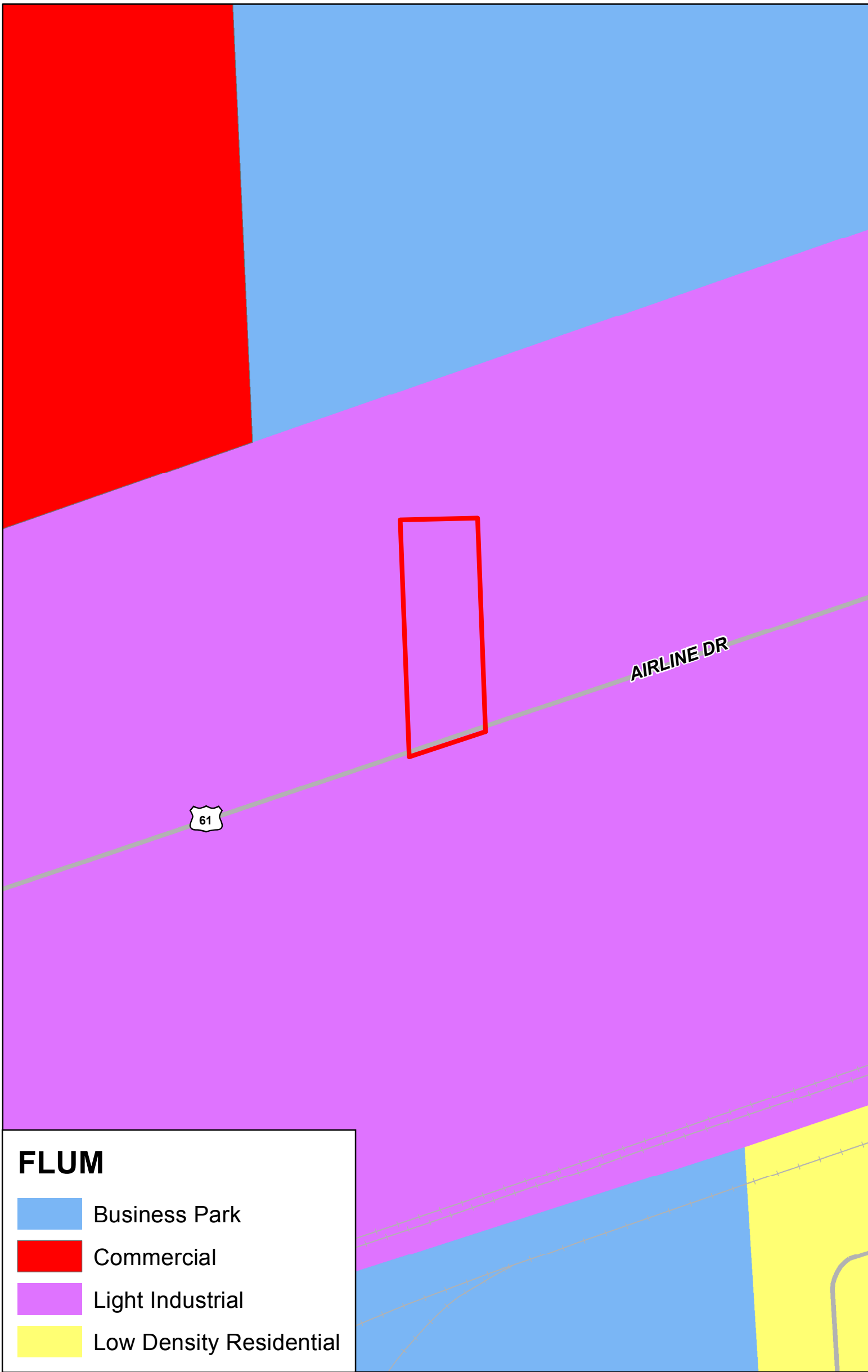


PZS-2017-07



Requested by: Bourgeois/BMB Real Estate
Rezoning from M-1 to C-3



N



FLUM

-  Business Park
-  Commercial
-  Light Industrial
-  Low Density Residential