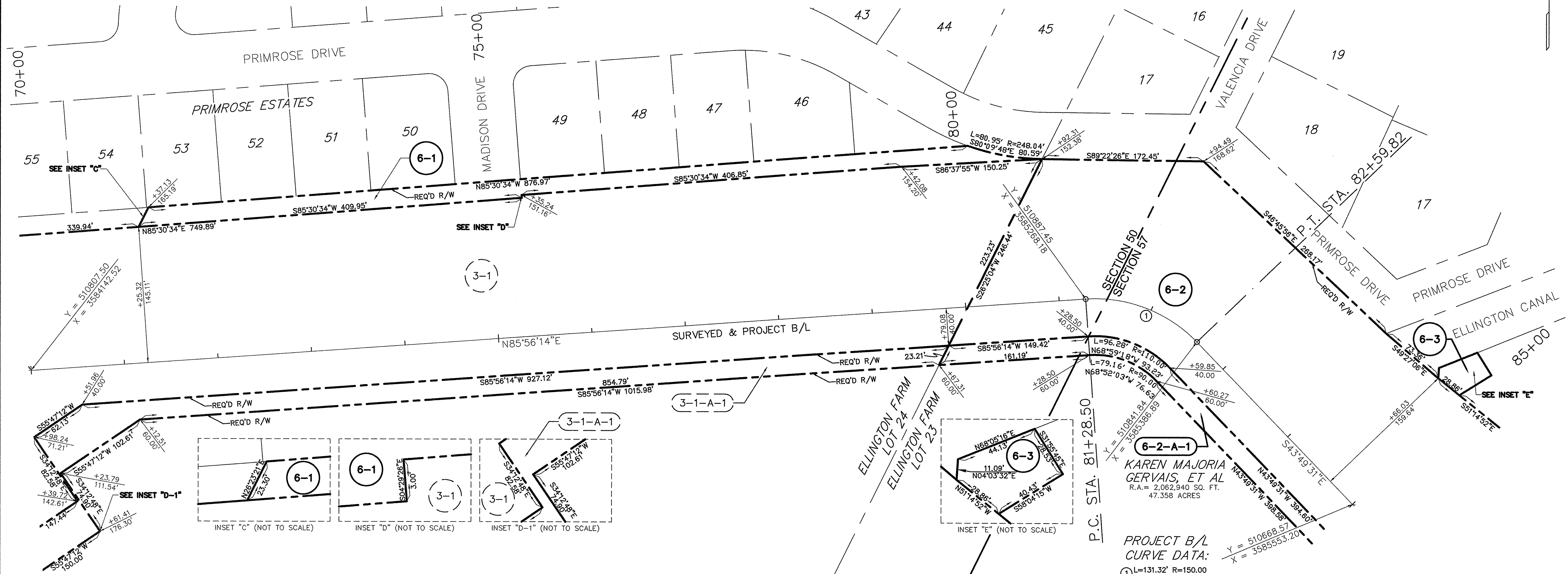


SOUTHEASTERN LAND DISTRICT
WEST OF THE MISSISSIPPI RIVER
T 13 S - R 21 E
SECTIONS 50 & 57



ELEVATIONS OR COORDINATES BASED ON:
DESIGNATION: BA01 SM01
PID: DH3816
STATE/COUNTY: LA/ST. CHARLES PARISH
USGS QUAD: LULING (1992)
NAD 83 (2007): 29°55'01.64"(N) 90°18'58.55"(W) ADJUSTED
NAVD 88: 1.74 (METERS) 5.70 (FEET)
GPS OBS: 2006.81
RETRIEVAL DATE: DECEMBER 8, 2010
BEARINGS SHOWN HEREON ARE GRID
BEARINGS BASED ON THE LOUISIANA STATE
PLANE COORDINATE SYSTEM SOUTH ZONE
NAD 83 (1992).

LEGEND

- REQUIRED RIGHT OF WAY LINE
- PROPERTY LINE
- LOT LINE
- LIMITS OF CONSTRUCTION
- EXISTING RIGHT OF WAY LINE
- SECTION LINE
- DRAINAGE SERVITUDE

PARCEL	OWNER	ACQUISITION	AREA	ESTATE TYPE
6-3	JUAN C. DUCHESNE	C.O.B. 795 PG. 55 ENTRY NO. 394404	0.034 AC.	PERPETUAL DRAINAGE EASEMENT
6-2-A-1	KAREN MAJORIA GERVAIS, ET AL	C.O.B. 235 PG. 389 ENTRY NO. 71617	0.326 AC.	PERPETUAL LEVEE & CHANNEL EASEMENT
6-2	KAREN MAJORIA GERVAIS, ET AL	C.O.B. 235 PG. 389 ENTRY NO. 71617	3.142 AC.	PERPETUAL LEVEE & CHANNEL EASEMENT
6-1	RIDGELAND PROPERTIES, L.L.C.	C.O.B. 499 PG. 718 ENTRY NO. 196872	0.386 AC.	PERPETUAL DRAINAGE EASEMENT

I CERTIFY THAT THIS PLAT REPRESENTS AN ACTUAL ROUTE SURVEY MADE BY ME, OR BY THOSE UNDER MY DIRECTION AND COMPLIES WITH THE REQUIREMENTS OF LOUISIANA'S "STANDARDS OF PRACTICE FOR BOUNDARY SURVEYS" FOR A CLASS D ROUTE SURVEY SPECIFICALLY CHAPTER 2909 - ROUTE SURVEY.

RESIDUAL ACREAGE NOTE
RESIDUAL ACREAGE'S SHOWN ARE CALCULATED FOR INFORMATION PURPOSES ONLY.
THE RESIDUAL ACREAGE'S ARE SUBJECT TO REVIEW AND VERIFICATION BY TITLE AND SURVEY.

DATE	DESCRIPTION	TPT	BY
10/16/14	ADDED PARCELS 3-1-A-1 & 6-2-A-1, DELETED SEWER SERVITUDE		
	REVISIONS		

LAFORCHE BASIN LEVEE DISTRICT
AND
PARISH OF ST. CHARLES

RIGHT OF WAY MAP
WEST BANK HURRICANE PROTECTION LEVEE - PHASE III
ELLINGTON
ST. CHARLES PARISH, LOUISIANA
STA. 10+00.00 TO 170+62.80

RIVERLANDS SURVEYING COMPANY
608 HEMLOCK STREET
LAFAYETTE, LA 70503
1-800-248-6882
989-652-6358

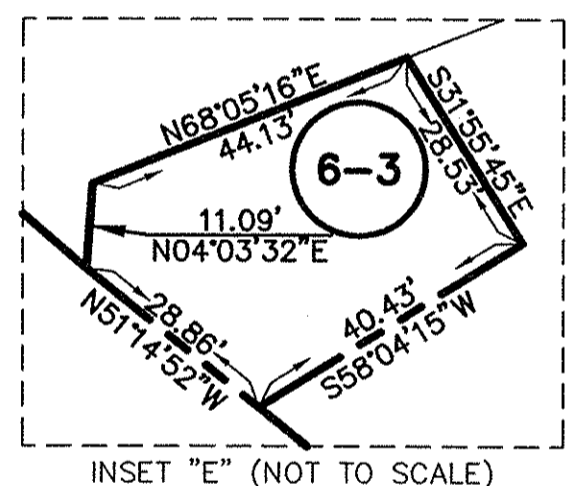
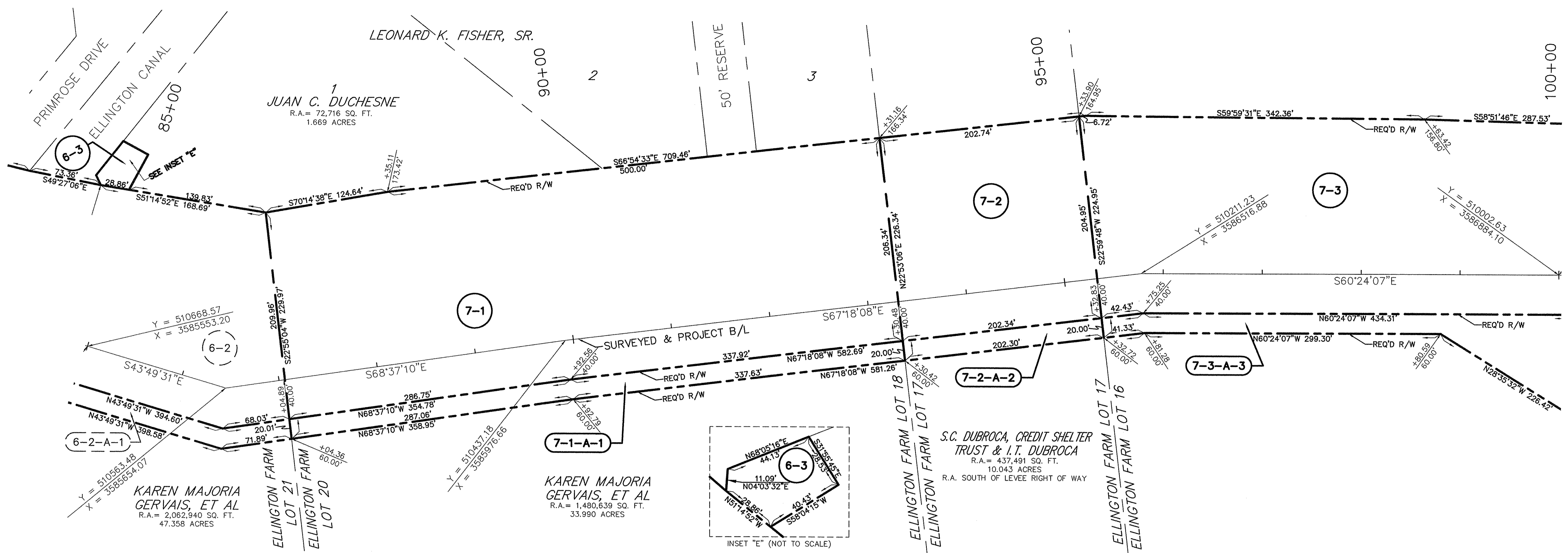
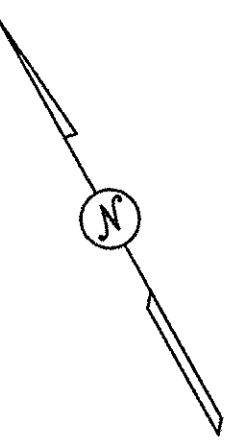
STEPHEN P. FLYNN, P.L.S.
LA. ST. REG. NO. 4668

DATE: 04/17/2014 / 100% SCALE: 1" = 50'
DRAWN BY: T.P.T. COMPUTED BY: S.P.F. SHEET NO. 6



S:\Land Projects R2\LDwg\1553_L1553_1790_RSC_ROW_15-2014.dwg 10/16/2014 1:55:22 PM CDT

SOUTHEASTERN LAND DISTRICT
WEST OF THE MISSISSIPPI RIVER
T 13 S - R 21 E
SECTION 57



ELEVATIONS OR COORDINATES BASED ON:
DESIGNATION: BA01 SMO1
PID: DH3816
STATE/COUNTY: LA/ST. CHARLES PARISH
USGS QUAD: LULING (1992)
NAD 83 (2007): 29°55'01.64"(N) 90°18'58.55"(W) ADJUSTED
NAVD 88: 1.74 (METERS) 5.70 (FEET)
GPS OBS: 2006.81
RETRIEVAL DATE: DECEMBER 8, 2010
BEARINGS SHOWN HEREON ARE GRID
BEARINGS BASED ON THE LOUISIANA STATE
PLANE COORDINATE SYSTEM SOUTH ZONE
NAD 83 (1992).

LEGEND

- REQUIRED RIGHT OF WAY LINE
- PROPERTY LINE
- LOT LINE
- LIMITS OF CONSTRUCTION
- EXISTING RIGHT OF WAY LINE
- SECTION LINE
- DRAINAGE SERVITUDE

PARCEL	OWNER	ACQUISITION	AREA	ESTATE TYPE
7-3-A-3	RIDGELAND PROPERTIES, L.L.C.	C.O.B. 499 PG. 718 ENTRY NO. 196872	0.681 AC.	PERPETUAL LEVEE & CHANNEL EASEMENT
7-3	RIDGELAND PROPERTIES, L.L.C.	C.O.B. 499 PG. 718 ENTRY NO. 196872	3.018 AC.	PERPETUAL LEVEE & CHANNEL EASEMENT
7-2-A-2	S.C. DUBROCA, CREDIT SHELTER TRUST & I.T. DUBROCA	C.O.B. 502 PG. 139 ENTRY NO. 198300	0.093 AC.	PERPETUAL LEVEE & CHANNEL EASEMENT
7-2	S.C. DUBROCA, CREDIT SHELTER TRUST & I.T. DUBROCA	C.O.B. 502 PG. 139 ENTRY NO. 198300	0.956 AC.	PERPETUAL LEVEE & CHANNEL EASEMENT
7-1-A-1	KAREN MAJORIA GERVAIS, ET AL	C.O.B. 201 PG. 565 ENTRY NO. 59972	0.287 AC.	PERPETUAL LEVEE & CHANNEL EASEMENT
7-1	KAREN MAJORIA GERVAIS, ET AL	C.O.B. 201 PG. 565 ENTRY NO. 59972	3.000 AC.	PERPETUAL LEVEE & CHANNEL EASEMENT

I CERTIFY THAT THIS PLAT REPRESENTS AN ACTUAL ROUTE SURVEY MADE BY ME, OR BY THOSE UNDER MY DIRECTION AND COMPLIES WITH THE REQUIREMENTS OF LOUISIANA'S "STANDARDS OF PRACTICE FOR BOUNDARY SURVEYS" FOR A CLASS D ROUTE SURVEY SPECIFICALLY CHAPTER 2909 - ROUTE SURVEY.

RESIDUAL ACREAGE NOTE
RESIDUAL ACREAGE'S SHOWN ARE CALCULATED FOR INFORMATION PURPOSES ONLY.
THE RESIDUAL ACREAGE'S ARE SUBJECT TO REVIEW AND VERIFICATION BY TITLE AND SURVEY.

DATE	DESCRIPTION REVISIONS	BY
10/16/14	ADDED PARCELS 6-2-A-1, 7-1-A-1, 7-2-A-2 & 7-3-A-3, DELETED SEWER SERVITUDE	TPT

LAFORCHE BASIN LEVEE DISTRICT
AND
PARISH OF ST. CHARLES

RIGHT OF WAY MAP
WEST BANK HURRICANE PROTECTION LEVEE - PHASE III
ELLINGTON
ST. CHARLES PARISH, LOUISIANA
STA. 10+00.00 TO 170+62.80

RIVERLANDS SURVEYING COMPANY
305 HEMLOCK STREET
LAFAYETTE, LA 70003
1-800-348-6356
088-652-6356

STEPHEN P. FLYNN, P.L.S.
LA. ST. REG. NO. 4668

DATE: 04/17/2014 / 100% SCALE: 1" = 50'
DRAWN BY: T.P.T. COMPUTED BY: S.P.F. SHEET NO. 7



S:\Land Projects R2\ldwgs\L1553_V01790_RSC_ROW.dwg 10/16/2014 1:55:22 PM CDT