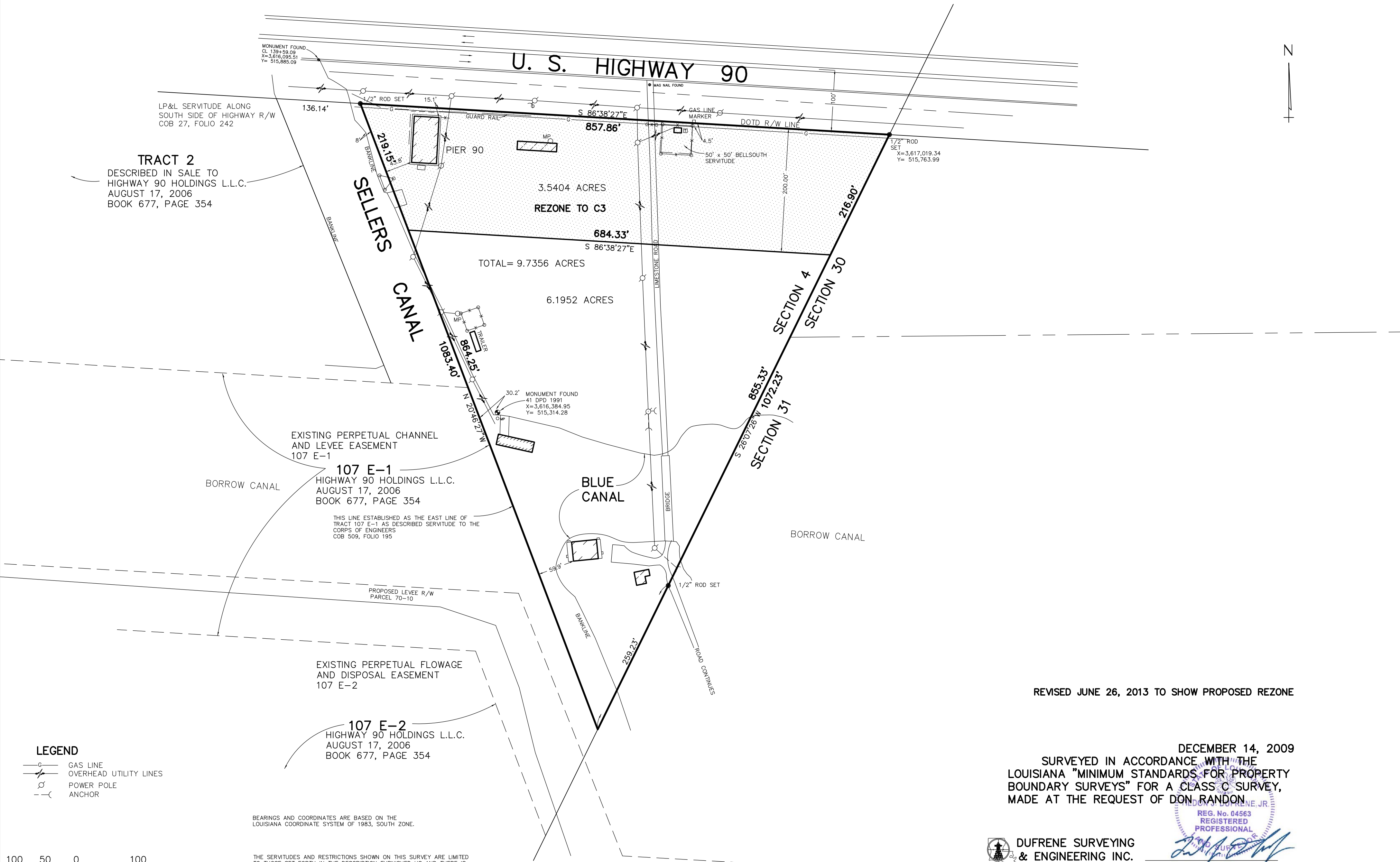


PART OF SECTION 4
 T 13 S R 22 E
 SOUTHEASTERN DISTRICT OF LOUISIANA
 WEST OF THE MISSISSIPPI RIVER
 ST. CHARLES PARISH
 LOUISIANA



REVISED JUNE 26, 2013 TO SHOW PROPOSED REZONE

DECEMBER 14, 2009
 SURVEYED IN ACCORDANCE WITH THE
 LOUISIANA "MINIMUM STANDARDS FOR PROPERTY
 BOUNDARY SURVEYS" FOR A CLASS C SURVEY,
 MADE AT THE REQUEST OF DON RANDON



DUFRENE SURVEYING
 & ENGINEERING INC.
 1624 MANHATTAN BOULEVARD, HARVEY, LA 70058
 504-368-6390 PH.
 504-368-6394 FAX
 dufrene@dsinc.net

