

# Parish President's Report

---

**Council Presentation**

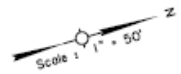
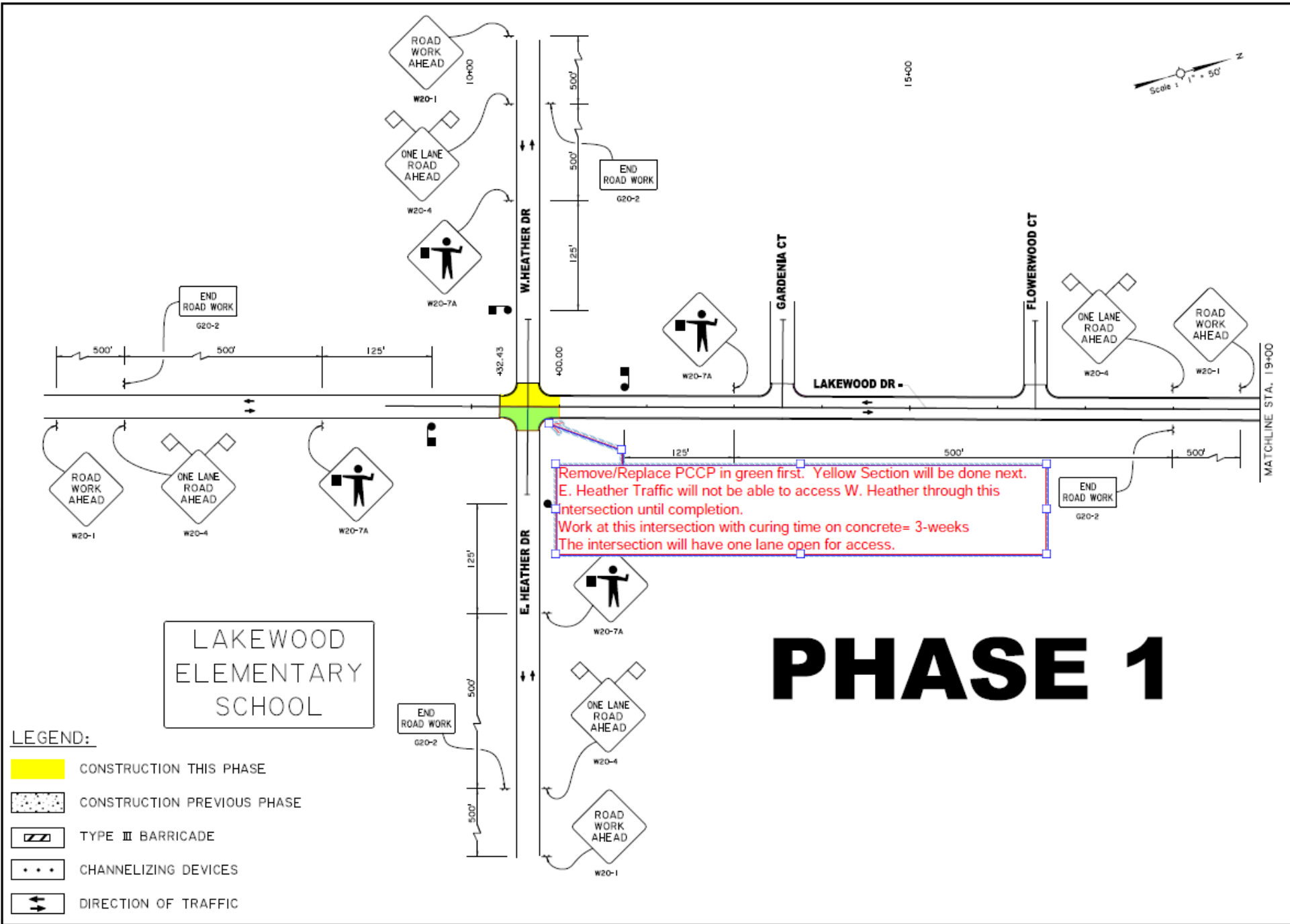
**June 6, 2023**

**Parish President**

**Matthew Jewell**







# PHASE 1

**LEGEND:**

- CONSTRUCTION THIS PHASE
- CONSTRUCTION PREVIOUS PHASE
- TYPE III BARRICADE
- CHANNELIZING DEVICES
- DIRECTION OF TRAFFIC

<small>SHEET NUMBER</small>	1
<small>DESIGN</small>	<small>J.P.R.</small>
<small>CHECK</small>	<small>R.W.M.</small>
<small>DATE</small>	<small>08/11/2023</small>
<small>PROJECT</small>	<small>ST. CHARLES</small>
<small>SECTION</small>	<small>000-45</small>
<small>STATE PROJECT</small>	<small>H.O.14051</small>
<small>DATE</small>	<small>08/11/2023</small>
<small>PROJECT BY</small>	<small>SHIRAD &amp; ASSOC., INC.</small>
<small>SCALE</small>	<small>AS SHOWN</small>



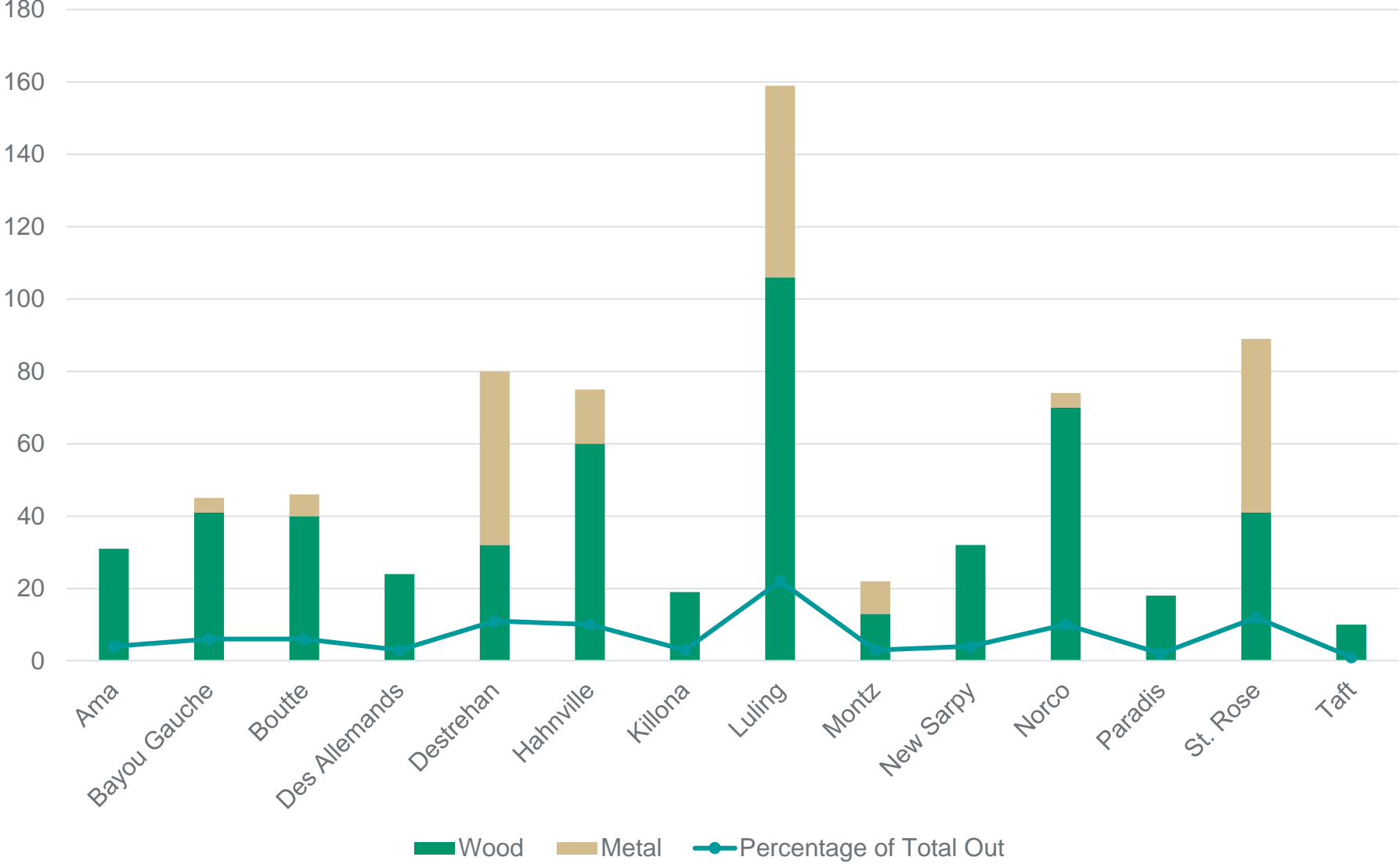
SUGGESTED SEQUENCE OF CONSTRUCTION AND CONSTRUCTION SIGNING LAYOUT







# Street Light Outage Report



Sales Tax Comparison				
Totals (1, 1/2, 3/8, and 1/8)	2022	2023		
January	3,667,280.15	4,308,977.46	641,697.31	17.50%
February	3,132,583.07	3,625,056.43	492,473.36	15.72%
March	4,256,525.41	4,175,925.78	(80,599.63)	-1.89%
April	3,387,172.51	3,326,186.86	(60,985.65)	-1.80%
May	3,599,965.59		(3,599,965.59)	-100.00%
June	3,806,056.08		(3,806,056.08)	-100.00%
July	3,574,865.09		(3,574,865.09)	-100.00%
August	3,173,304.05		(3,173,304.05)	-100.00%
September	4,078,925.45		(4,078,925.45)	-100.00%
October	3,987,330.39		(3,987,330.39)	-100.00%
November	4,604,368.23		(4,604,368.23)	-100.00%
December	5,270,565.73		(5,270,565.73)	-100.00%
Total To Date	14,443,561.14	15,436,146.53	992,585.39	6.87%

# Parish President's Report

---

Council Presentation

June 6, 2023

Parish President

Matthew Jewell

