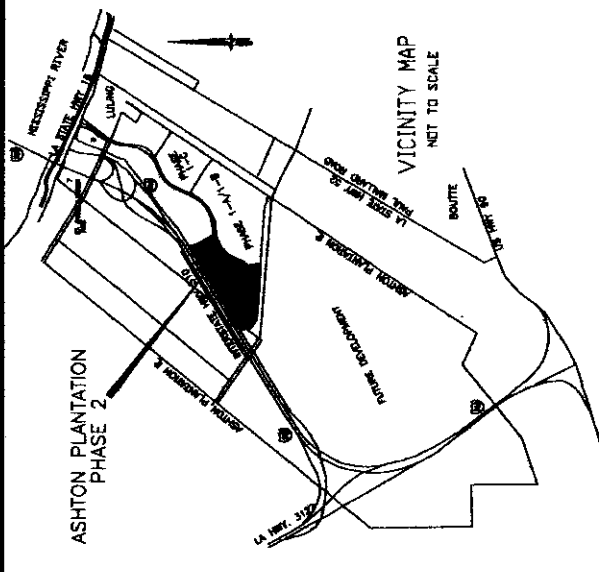
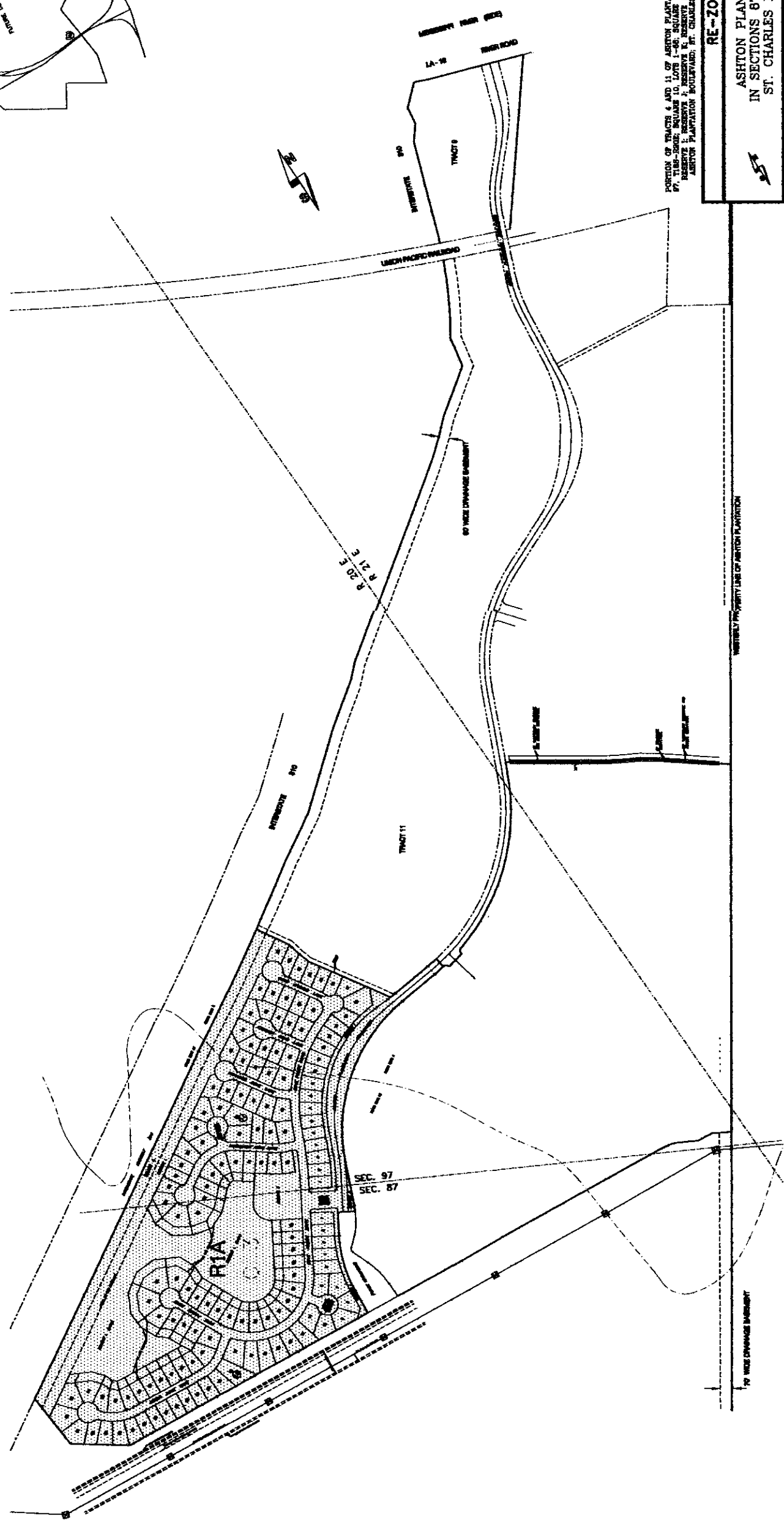


**ASHTON PLANTATION
PHASE 2
IN SECTIONS 87 & 97, T13S-R20E
ST. CHARLES PARISH, LOUISIANA**

□ DENOTES ZONING CHANGE - EXISTING C3 TO R1A



COURTYARD PLANNING & ZONING CONSULTANTS
 DATE _____
 STURMANT, ST. CHARLES PARISH COUNCIL
 DATE _____
 PARISH PRESIDENT
 DATE _____
 ORG. NO. _____

PORTION OF TRACTS 8 AND 11 OF ASHTON PLANTATION IN SECTIONS 87 & 97, T13S-R20E, ST. CHARLES PARISH, LOUISIANA, AS SHOWN ON RECORD MAP NO. 307-0017A, ASHTON PLANTATION BOULEVARD, ST. CHARLES PARISH, LOUISIANA. SHEET NO 1 OF 1

RE-ZONING PLAN

ASHTON PLANTATION, PHASE 2
IN SECTIONS 87 & 97, T13S-R20E
ST. CHARLES PARISH, LOUISIANA

KREBS, LESALLE, LEMIEUX CONSULTANTS, INC.
ENGINEERING, PLANNING, SURVEYING, HYDROLOGY, ENVIRONMENTAL
3013 27TH ST, METAIRIE, LA. 70002 (504)837-8470
1580 W. CAUSEWAY APPROACH, SUITE 1 MANDEVILLE, LA. 70471 (985)824-5125

SCALE: 1" = 300'
DATE: MAY 22, 2007
JOB NO. 307-0017A

DRAWN BY: E.M.P.
FILE NO. _____

METAIRIE, LA.
THIS SUBMISSION IS BASED UPON AN ACTUAL BOUNDARY SURVEY AND COMPARES TO THE RECORD MAP NO. 307-0017A. THE PRELIMINARY PLANNING AND SURVEYING OF THIS PROJECT HAS BEEN COMPLETED AND THE PROPERTY CONDITIONS WILL BE STANDED PRIOR TO THE SALE OR TRANSFER OF LOTS.

KREBS, LESALLE, LEMIEUX CONSULTANTS, INC.
BY: C. MANUEL DUBON, FILE NO. 4474

NO.	DATE	DESCRIPTION	REVISIONS