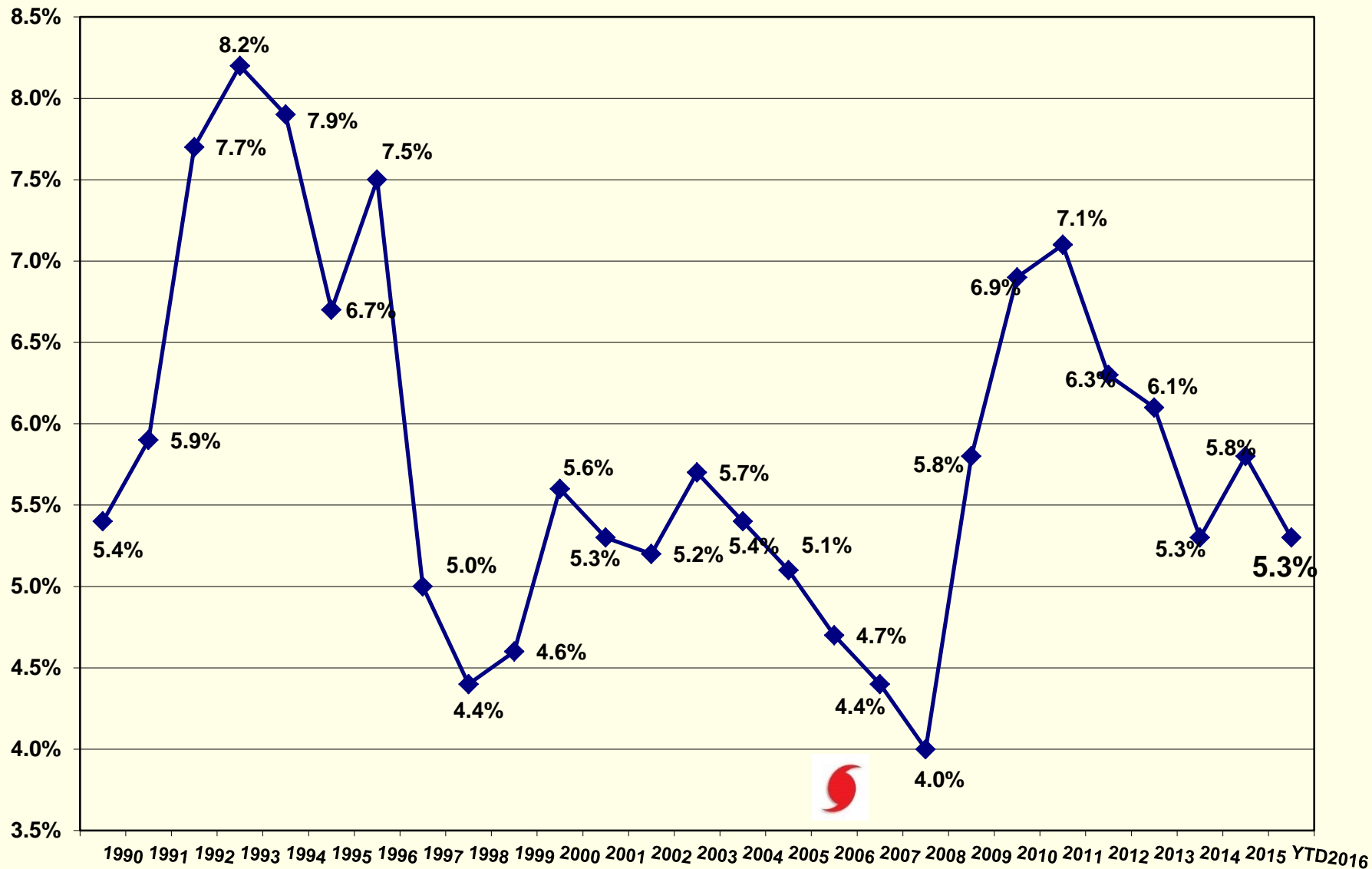


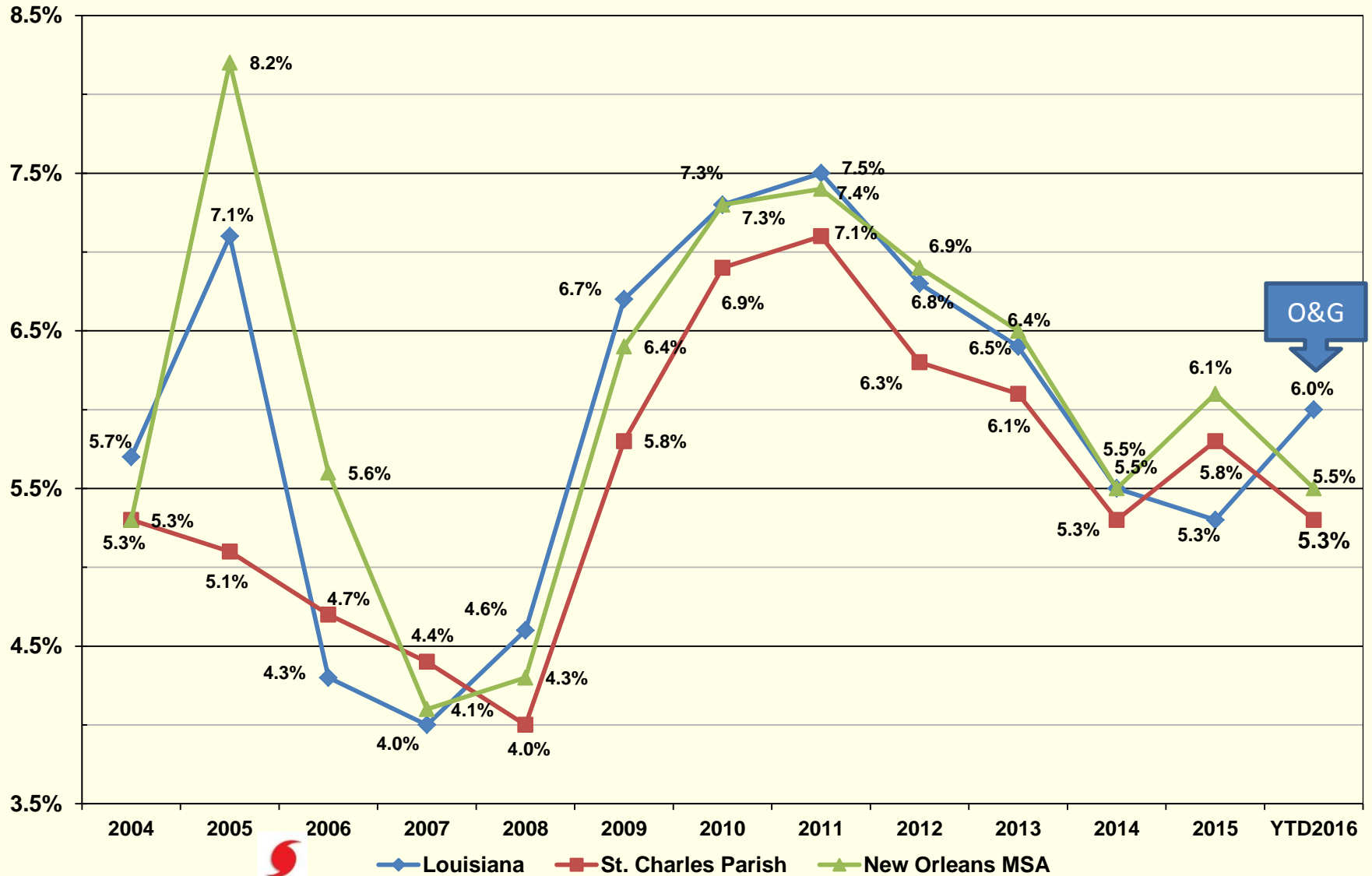


Economic Development Update

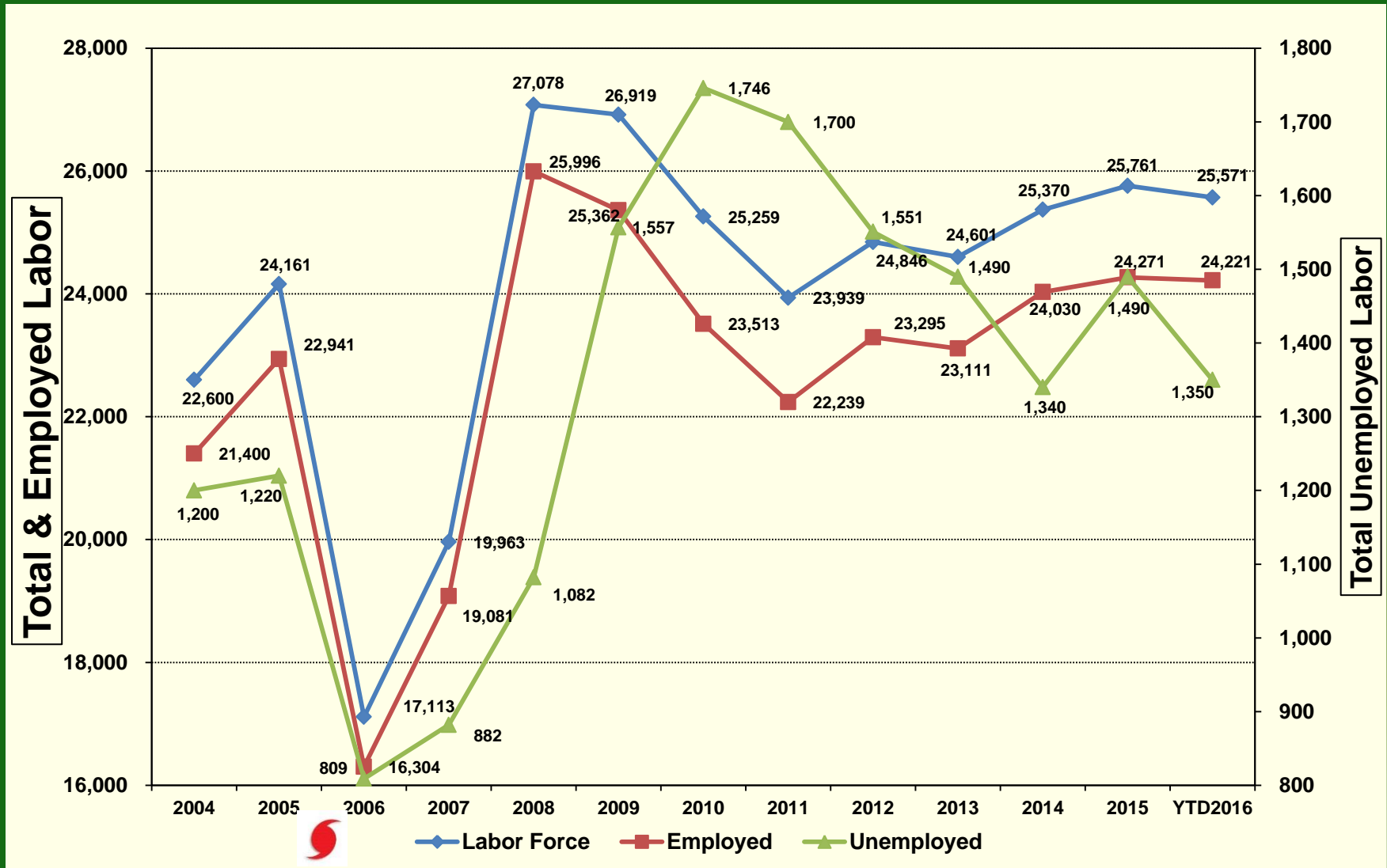
ST. CHARLES UNEMPLOYMENT RATE



U_r COMPARISON



CLOSER LOOK @ EMPLOYMENT



JOBS BREAKDOWN

| NAICS | Industry | 2016 Jobs |
|-------|---|-----------|
| 11 | Crop & Animal Production | 70 |
| 21 | Mining, Quarrying, & Oil & Gas Extraction | 89 |
| 22 | Utilities | 771 |
| 23 | Construction | 4,994 |
| 31 | Manufacturing | 4,823 |
| 42 | Wholesale Trade | 2,392 |
| 44 | Retail Trade | 1,740 |
| 48 | Transportation & Warehousing | 2,283 |
| 51 | Information | 69 |
| 52 | Finance & Insurance | 298 |
| 53 | Real Estate & Rental & Leasing | 283 |
| 54 | Professional, Scientific, & Technical Services | 1,479 |
| 55 | Management of Companies & Enterprises | 359 |
| 56 | Administrative & Support & Waste Mgmt. & Remediation Services | 1,241 |
| 61 | Educational Services | 318 |
| 62 | Health Care & Social Assistance | 1,756 |
| 71 | Arts, Entertainment, & Recreation | 252 |
| 72 | Accommodation & Food Services | 1,124 |
| 81 | Other Services (except Public Administration) | 817 |
| 90 | Government | 3,731 |
| 99 | Unclassified Industry | <10 |



JOB GAINS/LOSSES

| NAICS | Description | 2015 Jobs | 2016 Jobs | 2015 - 2016 Change | 2015 - 2016 % Change |
|--------------|---|---------------|---------------|--------------------|----------------------|
| 23 | Construction | 4,524 | 4,686 | 162 | 4% |
| 62 | Health Care & Social Assistance | 1,558 | 1,662 | 104 | 7% |
| 42 | Wholesale Trade | 2,276 | 2,352 | 76 | 3% |
| 54 | Professional, Scientific, & Technical Services | 1,281 | 1,349 | 68 | 5% |
| 22 | Utilities | 719 | 771 | 52 | 7% |
| 90 | Government | 3,691 | 3,731 | 40 | 1% |
| 72 | Accommodation & Food Services | 1,085 | 1,096 | 11 | 1% |
| 55 | Management of Companies & Enterprises | 348 | 359 | 11 | 3% |
| 31 | Manufacturing | 4,768 | 4,777 | 9 | 0% |
| 81 | Other Services (except Public Admin.) | 581 | 587 | 6 | 1% |
| 71 | Arts, Entertainment, & Recreation | 204 | 208 | 4 | 2% |
| 52 | Finance & Insurance | 262 | 263 | 1 | 0% |
| 11 | Crop & Animal Production | 15 | 16 | 1 | 7% |
| 44 | Retail Trade | 1,653 | 1,652 | (1) | (0%) |
| 53 | Real Estate & Rental & Leasing | 256 | 250 | (6) | (2%) |
| 21 | Mining, Quarrying, & Oil & Gas Extraction | 106 | 89 | (17) | (16%) |
| 61 | Educational Services | 312 | 295 | (17) | (5%) |
| 51 | Information | 81 | 59 | (22) | (27%) |
| 48 | Transportation & Warehousing | 2,245 | 2,209 | (36) | (2%) |
| 56 | Administrative & Support & Waste Mgmt. & Remediation Services | 1,140 | 1,085 | (55) | (5%) |
| 99 | Unclassified Industry | <10 | <10 | Insf. Data | Insf. Data |
| Total | | 27,109 | 27,498 | 389 | 1% |

SECTOR WAGES

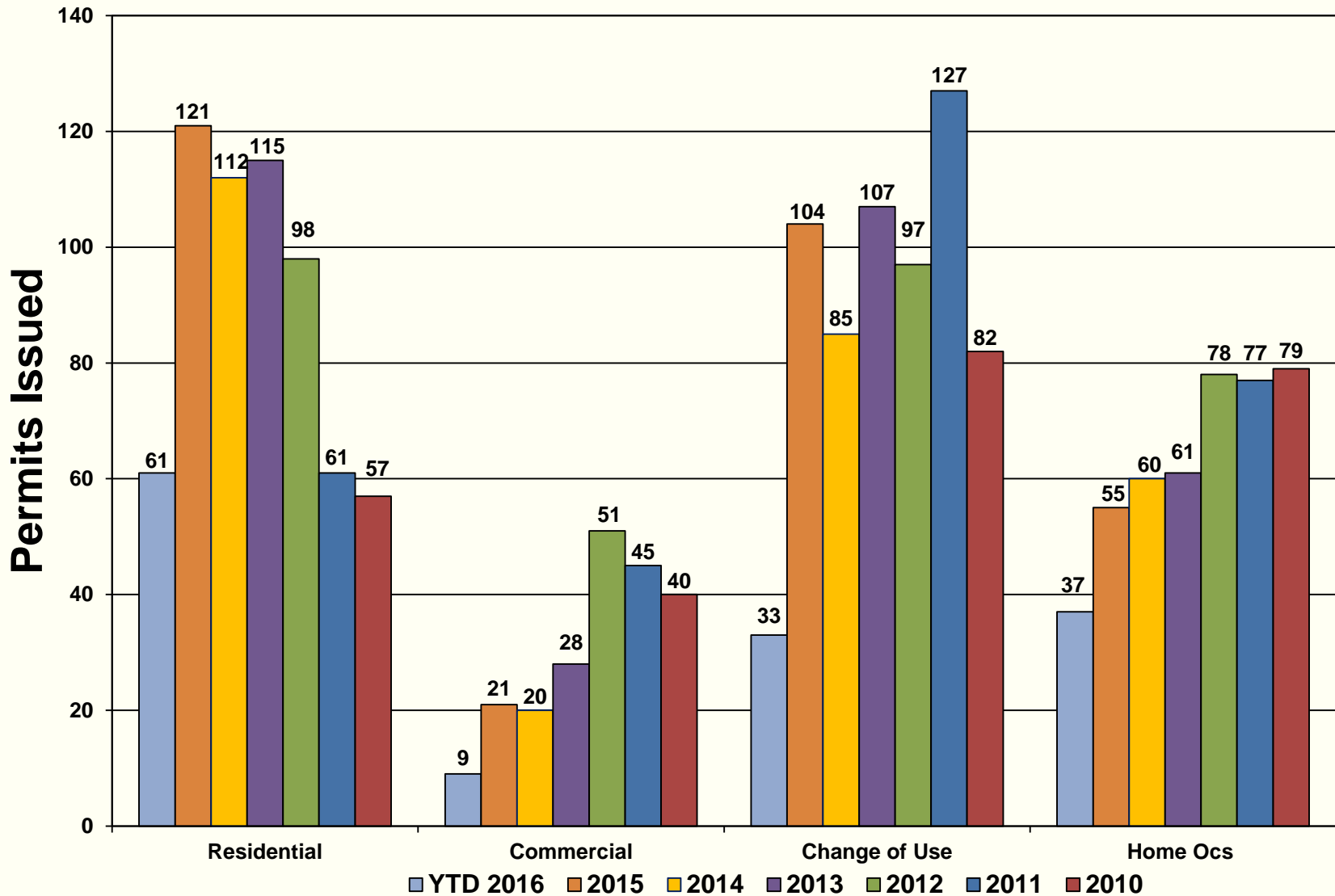
Industry Breakdown - 2016 Average Earnings

| Industry | Description | Earnings |
|----------|--|-----------------|
| 31 | Manufacturing | \$152,588 |
| 22 | Utilities | \$151,696 |
| 48 | Transportation and Warehousing | \$97,133 |
| 54 | Professional, Scientific, and Technical Services | \$94,584 |
| 21 | Mining, Quarrying, and Oil and Gas Extraction | \$86,312 |
| 23 | Construction | \$74,702 |
| 51 | Information | \$71,351 |
| 42 | Wholesale Trade | \$70,787 |
| 53 | Real Estate and Rental and Leasing | \$67,730 |
| 56 | Administrative and Support and Waste Management and Remediation Services | \$59,789 |
| 90 | Government | \$59,505 |
| 52 | Finance and Insurance | \$54,202 |
| 99 | Unclassified Industry | -- |
| 81 | Other Services (except Public Administration) | \$43,872 |
| 62 | Health Care and Social Assistance | \$39,432 |
| 44 | Retail Trade | \$37,053 |
| 11 | Crop and Animal Production | \$36,882 |
| 55 | Management of Companies and Enterprises | \$34,588 |
| 61 | Educational Services | \$23,600 |
| 71 | Arts, Entertainment, and Recreation | \$19,111 |
| 72 | Accommodation and Food Services | \$15,868 |
| | Total | \$81,042 |

WHERE ARE THE JOBS IN SCP?

| ZIP | ZIP Name | 2015 Jobs | 2016 Jobs | 2015 - 2016 Change | 2015 - 2016 % Change |
|-------|---|-----------|-----------|-----------------------|-------------------------|
| 70087 | Saint Rose, LA (in St. Charles county) | 6,771 | 6,865 | 94 | 1% |
| 70057 | Hahnville, LA (in St. Charles county) | 6,496 | 6,694 | 198 | 3% |
| 70070 | Luling, LA (in St. Charles county) | 4,217 | 4,206 | -11 | 0% |
| 70047 | Destrehan, LA (in St. Charles county) | 3,215 | 3,281 | 66 | 2% |
| 70079 | Norco, LA (in St. Charles county) | 2,702 | 2,773 | 71 | 3% |
| 70039 | Boutte, LA (in St. Charles county) | 1,810 | 1,812 | 2 | 0% |
| 70030 | Des Allemands, LA (in St. Charles county) | 855 | 843 | -12 | -1% |
| 70031 | Ama, LA (in St. Charles county) | 393 | 370 | -23 | -6% |
| 70080 | Paradis, LA (in St. Charles county) | 335 | 331 | -4 | -1% |
| 70078 | New Sarpy, LA (in St. Charles county) | 315 | 322 | 7 | 2% |
| | | 27,109 | 27,498 | 389 | 1% |

LOCAL PERMIT TOTALS



LOCAL HOUSING MARKET

Saint Charles Parish Market Overview

Data through May 31, 2016

\$178,400 ZHVI

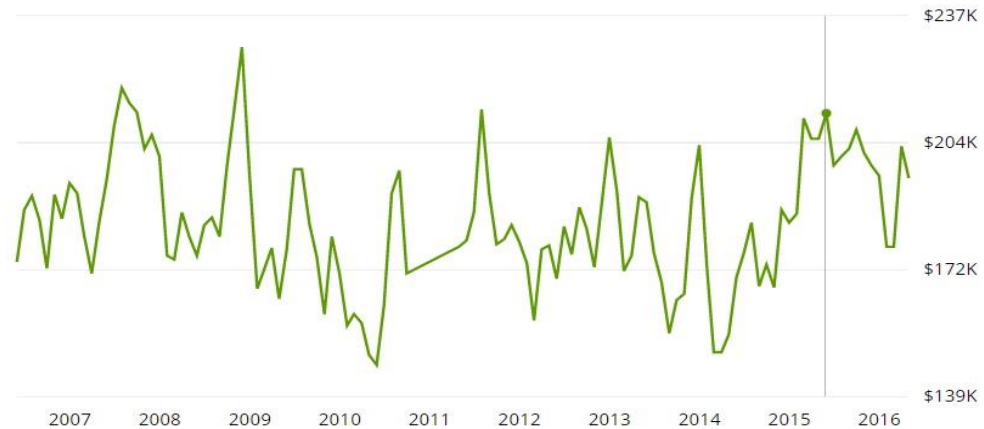
No data 1-yr forecast

No data Median listing price

\$195,665 Median sale price (Apr 30, 2016)

Median sale price Single family 1-yr 5-yr **Max**

May 2015 Saint Charles Parish \$212K



Source: Zillow

Chart Filters

Trend Metrics

- ☒ Median List Price
- ☐ Median \$/Sq.Ft.
- ☐ Inventory
- ☐ Median Days On Movoto

More Metrics

Time Period

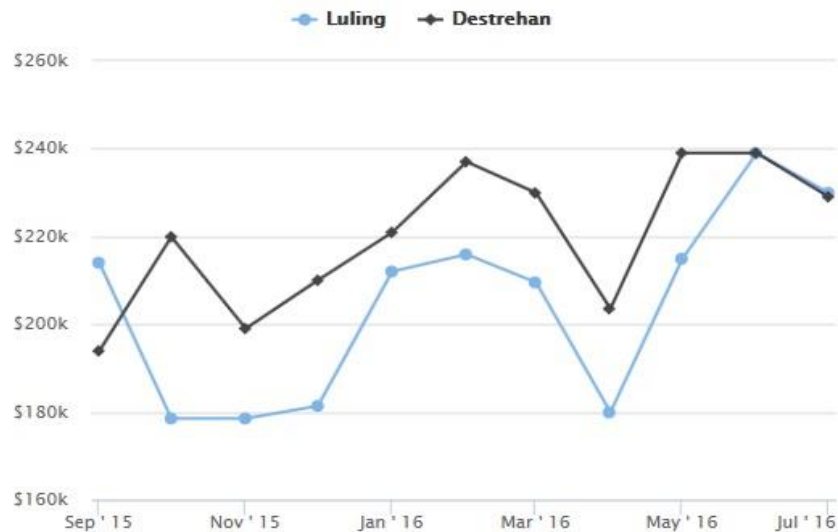
- ☐ 6 Months
- ☒ 1 Year
- ☐ 2 Years
- ☐ 5 Years

Destrehan

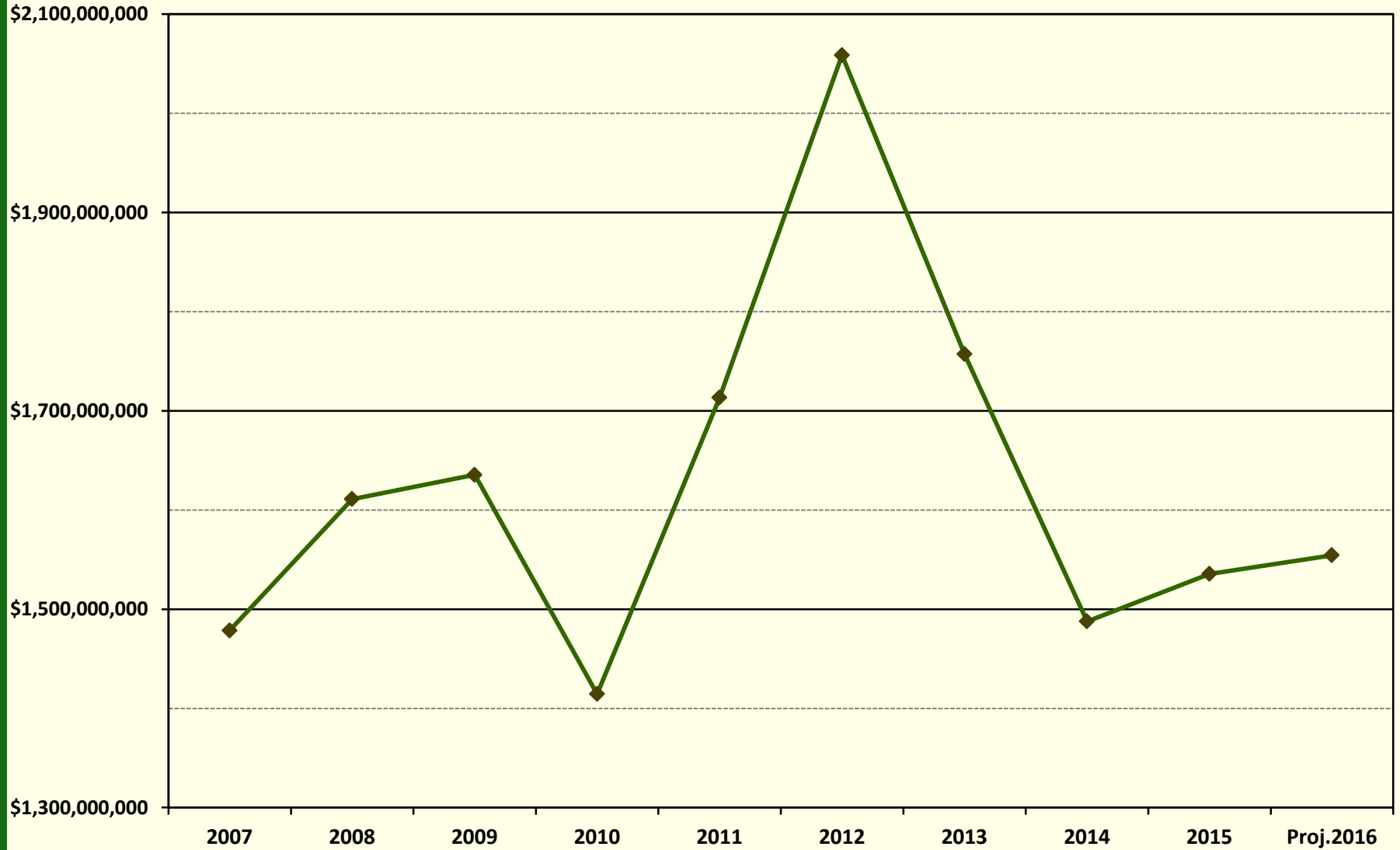
Single Family

Median List Price for Luling

Source: MOVOTO



TAXABLE SALES



PROJECT UPDATE



Kongsberg Maritime Office & Training Facility

- ~\$15M, 3-story Class A office in JBP
- Completed



AM Agrigen Killona Plant

- Working on partnership & offtake agreements
- \$800M, 100 Jobs



Entergy Little Gypsy Expansion

- \$870M, 26 jobs. Peak construction 2017-18
- PSC decision expected in July/Aug.



Monsanto Expansion

- ~\$950M, 105 jobs
- Peak construction 2017-18



Edible Enterprises

- Inaugural NOLA Food Pitch Competition; NOEW
- Adding dry & cold storage space
- 15 permitted users; 16 pending permit approval



Local Small Business Association

- Fall 2016
- Networking & Procurement

POLICY ISSUE

INDUSTRIAL TAX EXEMPTION PROGRAM

EXECUTIVE ORDER "GAMECHANGER"

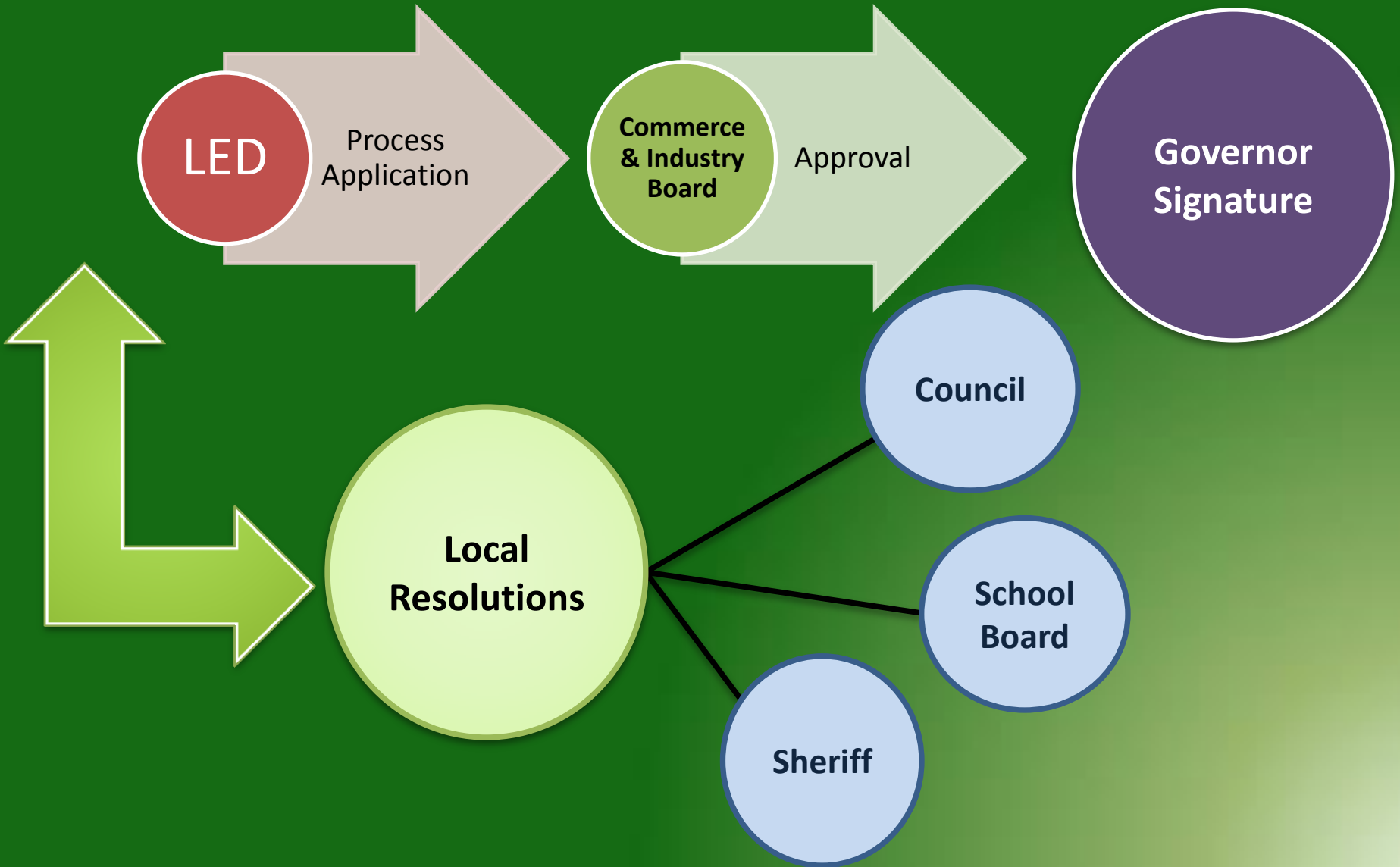


EXECUTIVE ORDER NUMBER JBE 2016 – 26

*CONDITIONS FOR PARTICIPATION IN THE INDUSTRIAL TAX
EXEMPTION PROGRAM*

- WHEREAS, Article 7, Section 21(F) of the Louisiana Constitution provides that the State Board of Commerce and Industry "with the approval of the governor, may enter into contracts for the exemption from ad valorem taxes of a new manufacturing establishment or an addition to an existing manufacturing establishment, on such terms and conditions as the board, with the approval of the governor, deems in the best interest of the state";
- WHEREAS, Article 7, Section 21(F) also provides that the contracts for the exemption "shall be for an initial term of no more than five calendar years and may be renewed for an additional five years";
- WHEREAS, under past practices of the Board of Commerce and Industry and previous governors of Louisiana, this has resulted in a 100 percent exemption or abatement from local property taxes for an initial period of five years, plus the opportunity for a five-year renewal, for a total of ten years of full exemption from local property taxes for qualifying manufacturing establishments;
- WHEREAS, under past practices of the Board of Commerce and Industry and previous governors of Louisiana, exemption contracts, unlike those in most states, have allowed ad valorem tax exemptions for maintenance capital, environmental capital upgrades, and new replacements to existing machinery with the result that the same components of a manufacturing plant remain exempt from the local property taxes for years after the expiration of the ten-year period for the contract;
- WHEREAS, under past practices the Board of Commerce and Industry and previous governors of Louisiana, exemption contracts have been allowed for Miscellaneous Capital Additions without requiring these projects to file advance notifications, which may more accurately identify projects that will provide for the goals of economic development;
- WHEREAS, under past practices of the Board of Commerce and Industry and previous governors of Louisiana, there have been no job creation or capital investment thresholds required for eligibility for the program;
- WHEREAS, further, receipt of other incentives from the State by way of direct funding, rebates, tax credits, industrial bonds, or other similar incentives has not factored into determinations of the Board or Governor for eligibility or extent of the exemption or for the length of the contract for the exemption despite the discretionary provisions granted in Article 7, Section 21(F);

LOCAL INPUT



EMPHASIS ON JOB CREATION/RETENTION

- **Governor “favors” new mfg. units**
- **Expansions/additions are “not favored” unless create jobs or present a compelling reason for job retention**

DISCRETIONARY EXEMPTION TERMS

- Removes 10-yr (5+5) standard approval
- Project-by-project analysis
- Variable abatement levels
- CEA will be drafted with local input & will include claw back provisions

UNCERTAINTY

- C&I Board is developing policies/rules
- LED developing policies
- LED will meet with local EDO's
- St. Charles Parish developing policies/processes
- Governor retains final authority



Thank You