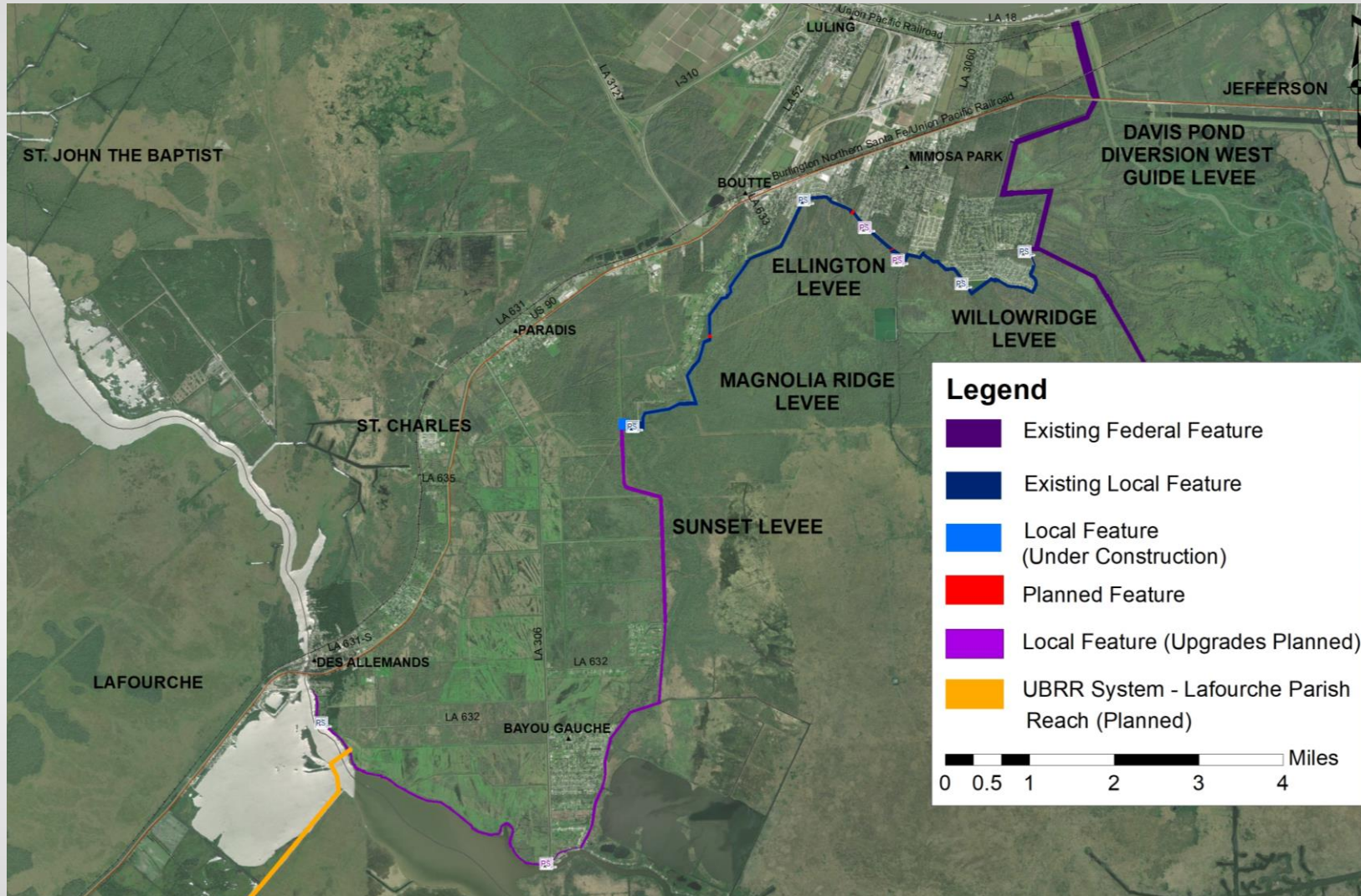


St. Charles Parish Hurricane Protection Project Update – December 6, 2021





St. Charles Parish Hurricane Protection Project Willowridge Pump Station Sump – WIN!

- The project excavated spoil materials from the Willowridge Detention Area for use in the construction of the West Bank Hurricane Protection Levee (WBHPL) System and created a detention pond
- The pond is complete
- There will be no more dirt hauling until the construction of 100-year protection



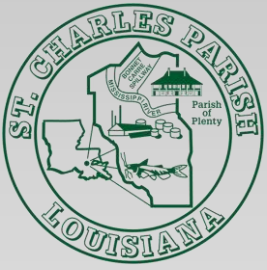


St. Charles Parish Hurricane Protection Project Kellogg Pump Station T-Wall – Permitted, Bid Advertising



- The project will consist of construction of T-wall frontal protection for the existing Kellogg Pump Station
- The frontal protection will tie into the Ellington Levee
- Permitting was completed in June 2021
- Bid advertisement will be published December 16, 2021, and bid opening is scheduled for February 1, 2022





St. Charles Parish Hurricane Protection Project Magnolia Ridge Levee – Complete

- 2.6 mile long levee improvement project to strengthen and raise the existing levee to +7.5' elevation
- The project featured a road at the base of the levee connecting the Magnolia Ridge Pump Station and Paradis Gate Floodwall to the Ellington Levee
- Final Acceptance provided November 8, 2021
- The project is in closeout, and O&M was turned over to LBLD

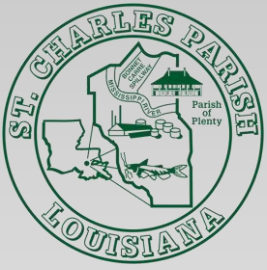




St. Charles Parish Hurricane Protection Project Paradis Flood Control Structure – 75% Complete

- Project consists of five T-Wall monoliths, one 15'-6" x 22'-6" navigable gate, and two slide gates situated on the Paradis Canal
- Three of the five monoliths have been constructed and main gates have been installed
- The project is expected to be completed in April 2022





St. Charles Parish Hurricane Protection Project Sunset Pump Station Upgrades – Design Phase

- The project consists of replacing engine, gearbox, and pumps
- The project is in conceptual design phase





St. Charles Parish Hurricane Protection Project Sunset Auto Bar Screens – Design Phase



- The project consists of widening canal to expand station from three to six pumps, not including two 30" hydraulics which will remain in place
- It also includes bar screen platform has seven bays to allow for future expansion of pump station





St. Charles Parish Hurricane Protection Project Montz Pump Stations – Design and Permitting Phase

- The project includes planned construction of two drainage pump stations, which will be 267 cfs capacity and 340 cfs capacity respectively
- Each pump station shall be comprised of a detention pond, electrical and mechanical buildings, and discharge pipes that are to be installed under LA Highway 628 and over the existing upper guide levee of the Bonnet Carre Spillway
- Permitting for soil borings for southern pump station are near completion in order to finalize design plans





St. Charles Parish Hurricane Protection Project West Bank Hurricane Protection Levee Projects in Design

Cousins Pump Station T-Wall:

- This project is in the final design stage. Design is under review to address the relocation of the sewer lines prior to construction.

Ellington Pipeline Crossing #1 and #2 and Magnolia Ridge Pipeline Crossing:

- T-Wall Designs are at 90% and on hold. Coordination with pipeline operators is also on hold. These features will likely need to be constructed with federal funds due liability issues related to construction surrounding the pipeline.





West Shore Lake Pontchartrain (WSLP) Hurricane and Storm Damage Risk Reduction System (HSDRRS)

- The U.S. Army Corps of Engineers (USACE) completed supplementary modeling and drainage analysis in September 2021 and is moving forward with the design of two 2,000 cfs pump stations at Reserve Relief Canal and I-55
- The planned pump station within the alignment in St. Charles Parish at Prescott Canal was replaced with a drainage structure
- Hauling of materials from the Bonnet Carré Spillway to the stockpile site in LaPlace continues
- Construction of access roads, including one road at the Western Guide Levee of the Spillway, commenced in October 2021
- The federal funding had provisions for the project to be completed in 2024.



A 100' wide section of the WSLP levee footprint was cleared for surveying activities



West Bank and Vicinity (WBV) Hurricane and Storm Damage Risk Reduction System (HSDRRS)

WBV-74 Western Tie-In Closure Structure (Sellers Canal Sector Gate)

- Dewatering, Inspection, and maintenance/repairs required every 10-15 years
- Substantial completion for the gate was issued on June 18, 2012

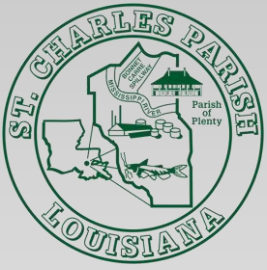
Plans & Specifications Progress

- Structural drawings complete. Plans detail areas to be sandblasted and areas to inspect for corrosion, paint and coating deterioration, body damage, misalignment, weld conditions, etc.
- Bid package anticipated to be completed in January 2022 and the inspection is planned for 2023.

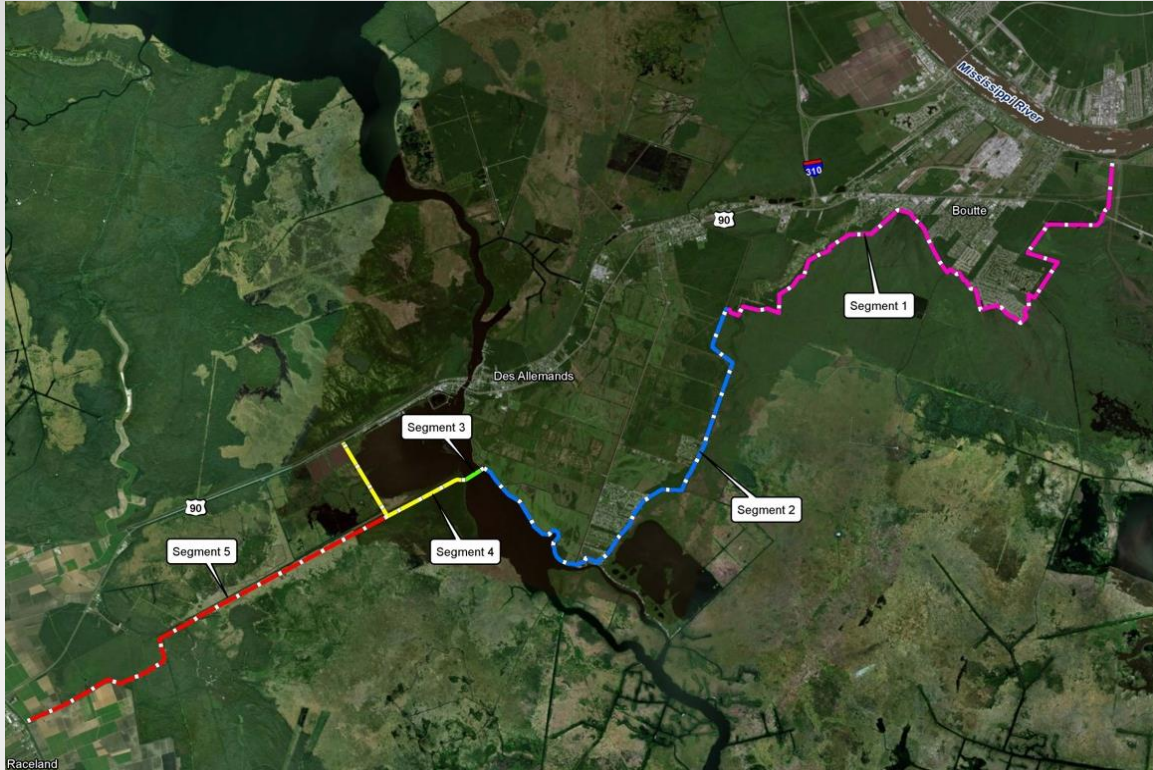
Recertification of WBV

- Based on the preliminary report, SLFPA-W has been advised that there may be areas of concern that will need to be addressed between the Sector Gate and the River.





Upper Barataria Risk Reduction (UBRR) Project



Sunset Levee Lift:

- LBLD is finalizing design and land rights acquisitions and anticipates bidding the project in early 2022

Chief's Report:

- USACE received the Final CAR from USFWS and is finalizing the report to document additional NEPA coordination
- USACE anticipates briefing the Chief in January 2022





QUESTIONS?

