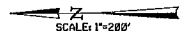


PARISH	SHEET NO.
ST. CHARLES	1 OF 2

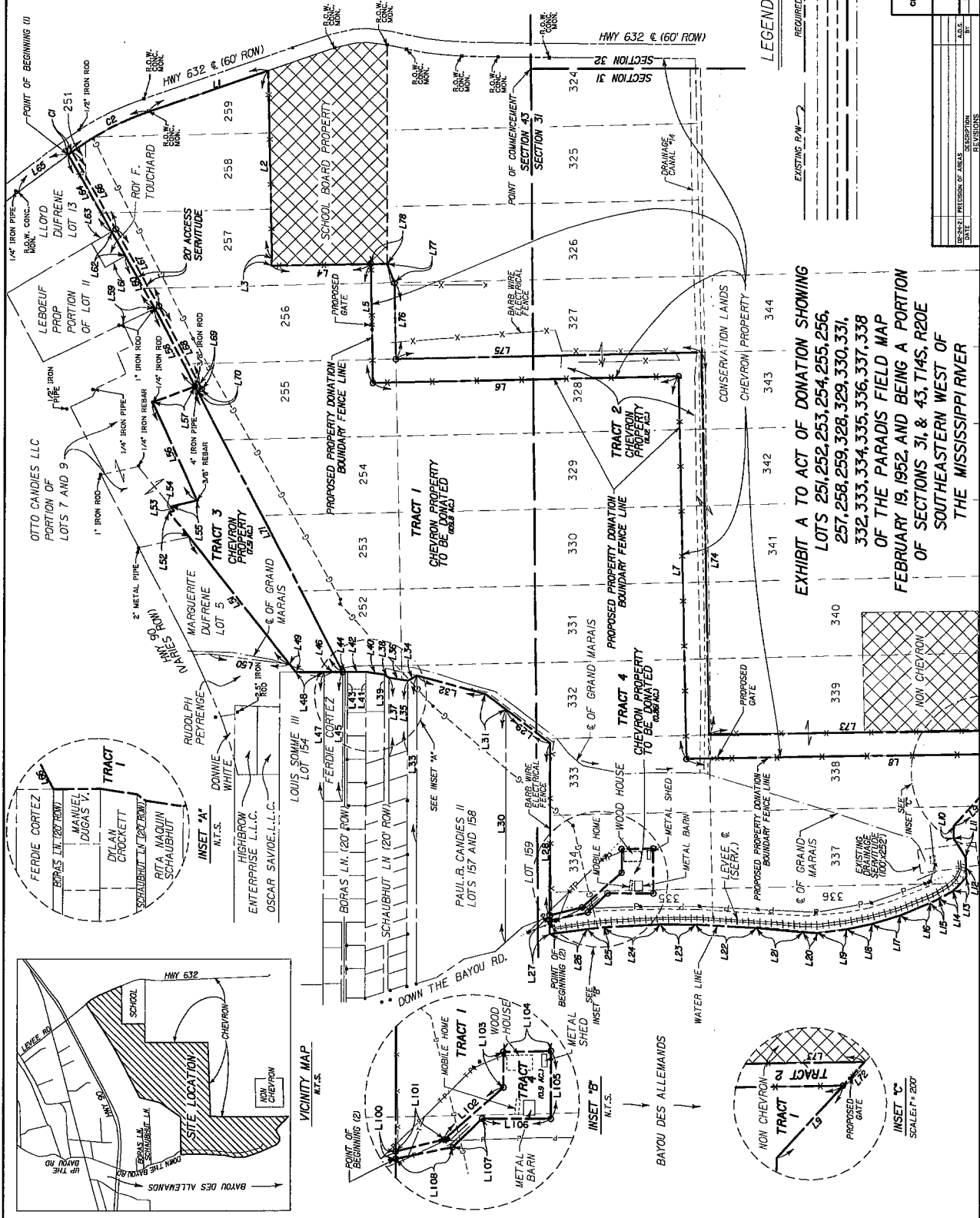


SEE SHEET 2 OF 2
FOR LEGAL
DESCRIPTION, BEARING
AND DISTANCES.

I HEREBY CERTIFY THAT THIS PLAN REPRESENTS THE SURVEY PERFORMED BY ME ON THE GROUND AND IN ACCORDANCE WITH THE STANDARDS OF PRACTICE AS SET FORTH IN THE RULES AND REGULATIONS OF THE BOARD OF PROFESSIONAL SURVEYORS AS ADOPTED BY THE LEGISLATURE OF THE STATE OF LOUISIANA AND THE CLASSIFICATION OF SURVEYS.



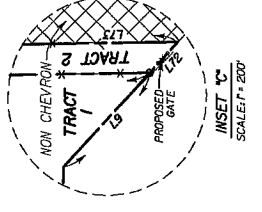
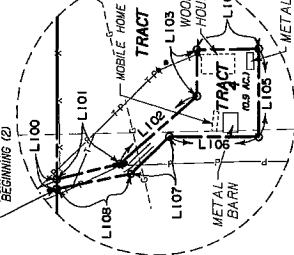
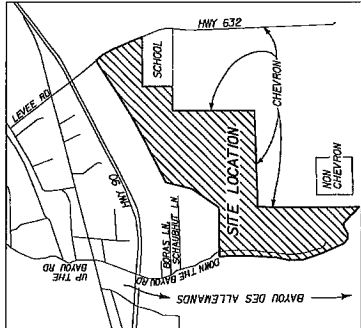
02/22/21
ANDREW L. GREASEL
PROFESSIONAL LAND SURVEYOR #5087



LEGEND

- REQUIRED P.W.
- EXISTING P.W.
- RIGHT OF WAY LINE
- UNPAVED PROPERTY LINE
- SERVIDUTE LINE
- SECTION LINE
- SERVIDUTE ON PIPE
- GRAND MARAIS
- SERVIDUTE ON PIPE
- FOUND PROPERTY CORNER

EXHIBIT A TO ACT OF DONATION SHOWING
LOTS 251, 252, 253, 254, 255, 256,
257, 258, 259, 328, 329, 330, 331,
332, 333, 334, 335, 336, 337, 338
OF THE PARADIS FIELD MAP
FEBRUARY 19, 1952, AND BEING A PORTION
OF SECTIONS 31, & 43, T14S, R20E
SOUTHEASTERN WEST OF
THE MISSISSIPPI RIVER



INSET 'C'
SCALE: 1"=200'

DATE	DESCRIPTION	PREPARED BY	CHECKED BY	APPROVED BY

EXHIBIT A TO ACT OF DONATION
CHEVRON U.S.A. INC. LAND DONATION TO ST. CHARLES PARISH
DESA ALLENAMUND LOUISIANA
SREED - INTERMEDIAL & ASSOC
ENGINEERS - SURVEYORS - PLANNERS
BATON ROUGE, LOUISIANA

