

CHANGE ORDER

No. 1 (Final)DATE OF ISSUANCE: March 11, 2014EFFECTIVE DATE: Date of Owner's SignatureOWNER St. Charles ParishCONTRACTOR Advanced Quality Construction, Inc.

Contract: _____

Project: Upgrade to Ashton Pump Station & Force MainOWNER's Contract No. S100902ENGINEER's Contract No. 1023ENGINEER Environmental Engineering Services, Inc.

You are directed to make the following changes in the Contract Documents:

Description:1. Delete the Following Work Items:

a. Liquidated Damages

The Parish assesses 5 days at \$500/day liquidated damages for substantial completion (-\$2,500).

Total of Deleted Work Items = (-\$2,500.00)

2. Add the Following Work Items:

a. New Contract Item #C01A: River Sand Fill

Addition of \$800.00 (L.S.). See attached cost estimate e-mail for details.

b. New Contract Item #C01B: Conflict Boxes

Addition of \$6,600.00 (L.S.). See attached cost estimate for details.

c. New Contract Item #C01C: Electrical Panel

Addition of \$3,550.00 (L.S.). See attached cost estimate for details.

Total of Added Work Items = (+\$10,950.00)

3. Revise the Following Work Item Quantities:

a. Contract Item #1A: 12" PVC DR25 (Open Cut) or 14" HDPE DIPS (Open Cut or Directional Drill) Pipe

The quantity is to be changed from 1,500 to 960 linear feet (-\$12,960).

b. Contract Item #1B: 14" HDPE DIPS DR11 (Directional Drill) Pipe

The quantity is to be changed from 1,400 to 1,600 linear feet (+\$13,712).

c. Contract Item #1C: 14" PVC DR25 (Open Cut) or 16" HDPE DIPS DR11 (Open Cut or Directional Drill) Pipe

The quantity is to be changed from 4,500 to 3,862 linear feet (-\$19,203.80).

d. Contract Item #1D: 16" HDPE DIPS DR 11 (Directional Drill) Pipe

The quantity is to be changed from 1,000 to 1,370 linear feet (+\$34,657.90).

e. Contract Item #1E: 16" HDPE DIPS DR9 (Directional Drill) Pipe

The quantity is to be changed from 2,150 to 1,280 linear feet (-\$87,600.30).

f. Contract Item #7: Air Release Valve and Manhole

The quantity is to be changed from 9 to 8 each (-\$4,498.80).

g. Contract Item #12: Ductile Iron Fittings

The quantity is to be changed from 2 to 1.5 tons (-\$2,845.50).

h. Contract Item #23: Remove and Replace Concrete Pavement and Base

The quantity is to be changed from 90 to 0 square yards (-\$6,934.50).

i. Contract Item #26: Remove and Replace Surface with Limestone

The quantity is to be changed from 25 to 0 cubic yards (-\$1,523.75).

j. Contract Item #44: Relocation of Infrastructure

The quantity is to be changed from 1 to 0 lump sum (-\$35,000).

- k. Contract Time: The quantity for fully complete is to be changed from 180 days to 210 days (June 3, 2013 to July 3, 2013).

Total of Change in Work Items Quantity = (-\$122,196.75)

Reason for Change Order: List a reason for each Line Item listed above.

1. Deleted Work Items
 - a. The Parish met and agreed with the Contractor to assess five (5) days of liquidated damages in lieu of the full ten (10) days if the Contractor completed for final acceptance prior to September 23, 2013. Contractor met requirements and is to be assessed five (5) days of liquidated damages = \$2,500.
2. Add Work Items
 - a. See attachments for details.
 - b. See attachments for details.
 - c. See attachments for details.
3. Revise Work Item Quantities
 - a. Quantities adjusted to meet field construction.
 - b. Quantities adjusted to meet field construction.
 - c. Quantities adjusted to meet field construction.
 - d. Quantities adjusted to meet field construction.
 - e. Quantities adjusted to meet field construction.
 - f. Quantities adjusted to meet field construction.
 - g. Quantities adjusted to meet field construction.
 - h. Item not required to complete project.
 - i. Item not required to complete project.
 - j. Item not required to complete project.
- k.
 - Three (3) days added for rain days. Days granted for rain days beyond the contract allots in Section 01010, 1.09 of the Contract Documents. (See attached section excerpt, correspondence, and calendar of requested days).
 - Four (4) days added for repair of canal bank behind ball park prior to major rain event.
 - Twenty (20) days added by the Parish for directional drilling problems. The number of days were set at a field progress meeting.
 - Three (3) days added for the relocation of Ashton Pump Station's electrical panel.

Attachments:

- Balancing change order sheet (1 page).
- River sand fill email communication: description, quote, and approval (3 pages).
- Contractor conflict box quote (2 pages).
- Rain days: Section excerpt, correspondence, and requested days (7 pages).
- Bank repair email correspondence (3 pages).
- Contractor electrical panel quote (2 pages).
- EES letter regarding additional days/liquidated damages (1 page).
- Contractor letter regarding additional days/liquidated damages (1 page).

CHANGE IN CONTRACT PRICE:
Original Contract Price \$956,542.20
Net Increase (Decrease) from previous Change Orders No. <u> </u> to <u> </u> : \$0
Contract Price prior to this Change Order: \$956,542.20
Net decrease of this Change Order: -\$113,746.75
Contract Price with all approved Change Orders: \$842,795.45

CHANGE IN CONTRACT TIMES:
Original Contract Times: Substantial Completion: <u>180 - November 30, 2013</u> Ready for final payment: <u>225 - January 14, 2014</u> (days or dates)
Net change from previous Change Orders No. <u> </u> to <u> </u> : Substantial Completion: <u>0</u> Ready for final payment: <u>0</u> (days)
Contract Times prior to this Change Order: Substantial Completion: <u>180 - November 30, 2013</u> Ready for final payment: <u>225 - January 14, 2014</u> (days or dates)
Net increase this Change Order: Substantial Completion: <u>30</u> Ready for final payment: <u>30</u> (days)
Contract Times with all approved Change Orders: Substantial Completion: <u>210 - December 30, 2013</u> Ready for final payment: <u>255 - February 13, 2014</u> (days or dates)

RECOMMENDED:
Environmental Engineering Services, Inc.

APPROVED:
St. Charles Parish

ACCEPTED:
Advanced Quality Construction, Inc.

By: 
ENGINEER (Blake E. Fogleman, P.E.)

By: _____
OWNER (Authorized Signature)

By: _____
CONTRACTOR (Authorized Signature)

Date: 3/24/14

Date: _____

Date: _____

EJCDC 1910-8-B (1996 Edition)

Prepared by the Engineers Joint Contract Documents Committee and endorsed by The Associated General Contractors of America and the Construction Specifications Institute.

CHANGE ORDER No. 1 (FINAL)
BALANCING SUMMARY SHEET
 Upgrade to Ashton Pump Station and Force Main
 St. Charles Parish, LA

PROJECT NO. 1023

DATE: January 31, 2014

ITEM #	DESCRIPTION	CONTRACT VALUES			ADDITIONS		DELETIONS		TOTALS	
		CONTRACT QUANTITY	UNIT PRICE	CONTRACT VALUE	QUANTITY	TOTAL	QUANTITY	TOTAL	QUANTITY	VALUE
1A	12" PVC DR25 (open cut) or 14" HDPE DIPS (open cut or directional drill) pipe	1500	\$24.00	\$36,000.00			540	\$12,960.00	960	\$23,040.00
1B	14" HDPE DIPS DR11 (directional drill) pipe	1400	\$68.56	\$95,984.00	200	\$13,712.00			1600	\$109,696.00
1C	14" PVC DR25 (open cut) or 16" HDPE DIPS DR11 (open cut or directional drill) pipe	4500	\$30.10	\$135,450.00			638	\$19,203.80	3862	\$116,246.20
1D	16" HDPE DIPS DR11 (directional drill) pipe	1,000	\$93.67	\$93,670.00	370	\$34,657.90			1370	\$128,327.90
1E	16" HDPE DIPS DR9 (directional drill) pipe	2150	\$100.69	\$216,483.50			870	\$87,600.30	1280	\$128,883.20
4	14" plug valve	1	\$5,925.95	\$5,925.95					1	\$5,925.95
7	Air Release Valve and Manhole	9	\$4,498.80	\$40,489.20			1	\$4,498.80	8	\$35,990.40
8	Connection to Existing 18" Sewer Main (tie-in)	1	\$11,214.80	\$11,214.80					1	\$11,214.80
12	Ductile Iron Fittings	2	\$5,691.00	\$11,382.00			0.5	\$2,845.50	1.5	\$8,536.50
17	Sewer Flow Control and Bypass Pumping	1	\$22,507.80	\$22,507.80					1	\$22,507.80
23	Remove and Replace Concrete Pavement and Base	90	\$77.05	\$6,934.50			90	\$6,934.50	0	\$0.00
26	Remove and Replace Surface with Limestone	25	\$60.95	\$1,523.75			25	\$1,523.75	0	\$0.00
32	Ashton Pump Station Complete	1	\$243,976.70	\$243,976.70					1	\$243,976.70
44	Relocation of Infrastructure	1	\$35,000.00	\$35,000.00			1	\$35,000.00	0	\$0.00
Change Order #1										
CO1A	Load of River Sand		\$800.00	\$800.00	1	\$800.00			1	\$800.00
CO1B	Conflict Boxes		\$6,600.00	\$6,600.00	1	\$6,600.00			1	\$6,600.00
CO1C	Electrical Panel		\$3,550.00	\$3,550.00	1	\$3,550.00			1	\$3,550.00
	Substantial Completion Liquidated Damages		\$500.00				5	\$2,500.00	-5	-\$2,500.00
				\$956,542.20	\$59,319.90	\$173,066.65				
							Total Change in Contract Price			
TOTAL		TOTAL	TOTAL ADDITIONS	\$956,542.20	\$59,319.90	TOTAL DELETIONS	TOTAL	\$173,066.65	TOTAL	\$842,795.45

Blake Fogleman

From: Lee Zerlingue <lzerlingue@stcharlesgov.net>
Sent: Thursday, March 14, 2013 4:27 PM
To: Blake Fogleman; 'Mark Boudreaux'
Cc: jlcazes@charter.net
Subject: RE: Add for River Sand

The request was made by us, but we also wanted EES approval on the engineering side. If there is no Engineering problem with it then I have no objection to the CO.

Lawrence "Lee" Zerlingue, PE
Senior Parish Engineer
Department of Public Works/Wastewater

From: Blake Fogleman [mailto:bfogleman@eesinc.net]
Sent: Thursday, March 14, 2013 4:19 PM
To: 'Mark Boudreaux'; Lee Zerlingue
Cc: jlcazes@charter.net
Subject: RE: Add for River Sand

Lee,

My understanding is that this was a request of the Parish and needed immediate attention. Can you please concur with the below request so I can process the paper CO?

Thanks,

Blake

Blake E. Fogleman, P.E.
Environmental Engineering Services, Inc.
610 Belle Terre Blvd.
LaPlace, LA 70068
Office Phone: 985-653-0185
Office Fax: 985-653-0182
Cell Phone: 337-501-6696

From: Mark Boudreaux [mailto:mboudreaux@aqconstruction.net]
Sent: Wednesday, March 13, 2013 7:42 AM
To: Blake Fogleman; Lee Zerlingue
Subject: Add for River Sand

Blake,

Murray and others in the field yesterday requested we place a load of river sand in the hole around the tee for the air valve at the end of the levee berm closest to the power line tower. The cost place the sand including labor equipment and materials is \$ 800.00. We have a machine in route this morning and will install the sand as requested.

Thank You

Mark Boudreaux
Project Manager
AQ Construction Inc.
985-898-3472 P
985-898-3461 F
985-966-4285 C

Blake Fogleman

From: Murray Dufrene <mdufrene@stcharlesgov.net>
Sent: Monday, March 11, 2013 9:26 AM
To: Mark Boudreaux; Blake Fogleman
Cc: jlcazes@charter.net
Subject: RE: Open Entry Pit

Thank you

Connected by DROID on Verizon Wireless

-----Original message-----

From: Mark Boudreaux <mboudreaux@aqconstruction.net>
To: Murray Dufrene <mdufrene@stcharlesgov.net>, Blake Fogleman <bfogleman@eesinc.net>
Cc: "jlcazes@charter.net" <jlcazes@charter.net>
Sent: Mon, Mar 11, 2013 14:11:12 GMT+00:00
Subject: RE: Open Entry Pit

I spoke with Harry and they will be addressing any issues with the pit.

Thank You

Mark Boudreaux
Project Manager
AQ Construction Inc.
985-893-3472 P
985-893-3461 F
985-966-4285 C

From: Murray Dufrene [mailto:mdufrene@stcharlesgov.net]
Sent: Sunday, March 10, 2013 12:44 PM
To: Mark Boudreaux; Blake Fogleman
Cc: jlcazes@charter.net
Subject: Open Entry Pit

The Entry Pit for the last bore, (one on the levee to the south of Ashton Subdivision). With the issues that were experienced during this bore, the pit has been open for about 12 days. Due to the poor Soil conditions the walls have continued to fall, causing the pit to become larger. With rain in forecast, the conditions will continue to get worse. The excavation is on the very edge of the Canal Bank. Please make a effort to close some of this excavation before the Canal Bank fails. Also if the excavation needs to be pumped or bailed out. Do not allow slush/ muck to enter canal.

Connected by DROID on Verizon Wireless

Advanced Quality Construction, Inc.

22161 Marshall Rd. Ste. C Mandeville, La. 70471

P- 985-893-3472 / F- 985-893-3471

Advanced Quality Construction Inc. Proposes installation of the following items for the Ashton Plantation Sewer Forced Main Upgrade Project :

Conflict box for intersection of 12" DR-25 Pipe and Existing 24" Culvert, includes all labor and materials for the installation of each box as per attached sketch.

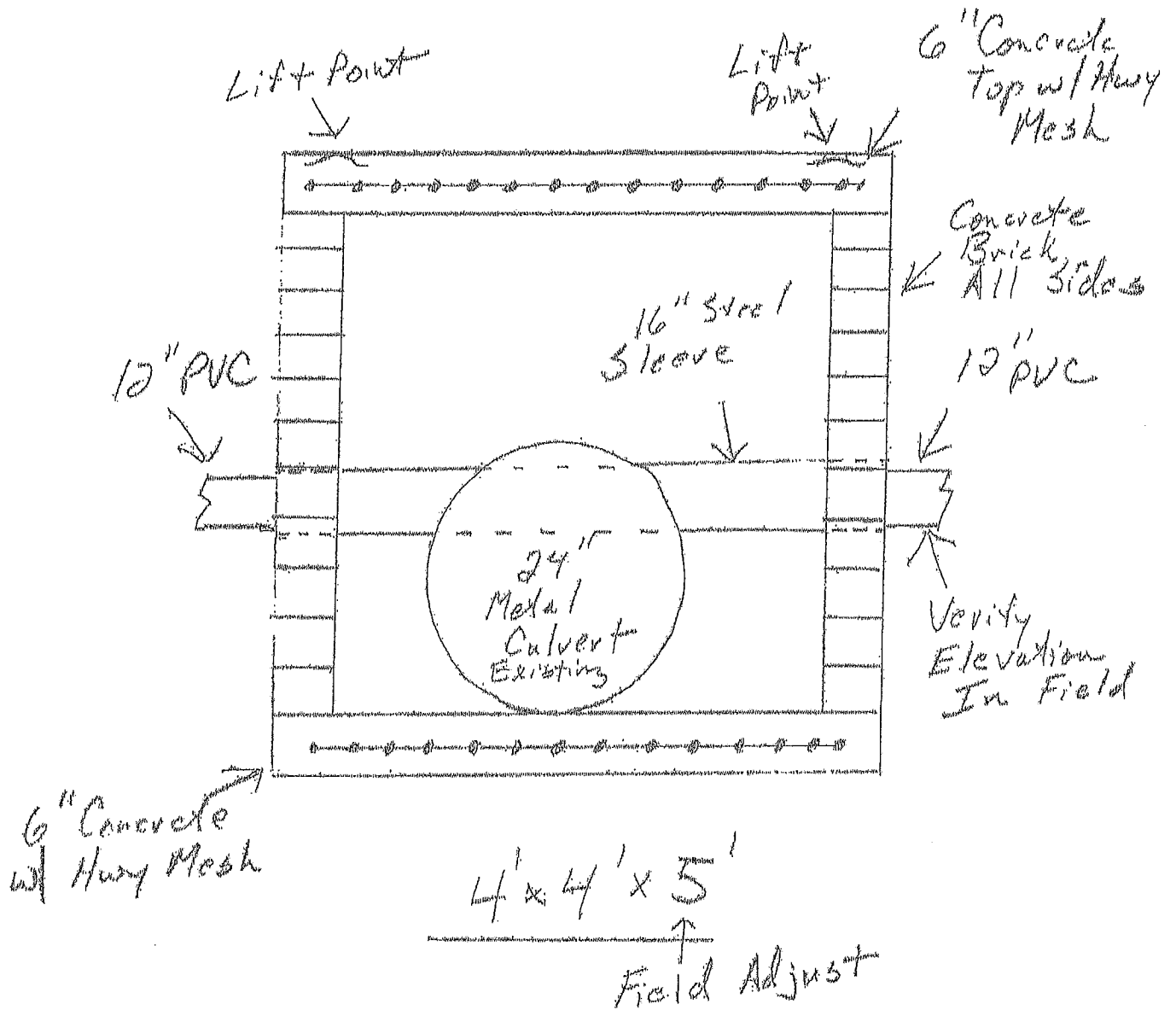
2 - Boxes @ \$3300.00 each = \$6600.00

Thank You

Mark Boudreaux

Project Manager
AQ Construction Inc.

Ashton Conflict Boxes



TECHNICAL SECTION
DIVISION 01 - GENERAL REQUIREMENTS
SECTION 01010 - SUMMARY OF WORK

All Work in this area must be coordinated with the Owner and the Contractor shall minimize any disruption to the normal activities of the Owner.

E. All other land deemed necessary by the Contractor for the storage of materials and equipment and other facilities or required for the performance of the work shall be arranged for by the Contractor at no additional cost to the Owner.

1.09 RAIN DAYS

A. If requested the Contractor shall be granted time extensions for excessive rain days, beyond the reasonably anticipated days of adverse weather. This time extension must be requested monthly. The following are considered reasonably anticipated days of adverse weather on a monthly basis.

January	<u>11</u>	days	July	<u>6</u>	days
February	<u>10</u>	days	August	<u>5</u>	days
March	<u>8</u>	days	September	<u>4</u>	days
April	<u>7</u>	days	October	<u>3</u>	days
May	<u>5</u>	days	November	<u>5</u>	days
June	<u>6</u>	days	December	<u>8</u>	days

1.10 OWNER OCCUPANCY

Owner will have full access to and use of all existing Owner-owned facilities during the entire period of construction for the conduct of his normal operations. Cooperate with Engineer in all construction operations to minimize conflict and to facilitate Owner usage. A listing of the Owner's existing facilities in conjunction with this project may be shown in the drawings.

1.11 PARTIAL OWNER OCCUPANCY

The Contractor shall schedule his operations for completion of portions of the Work, as designated, for the Owner's occupancy prior to Substantial Completion of the entire Work. Refer to paragraph 1.04 Work Sequence for completion schedule.

1.12 OWNER FURNISHED ITEMS

Items to be furnished by the Owner on this Project shall be listed in the Supplementary Conditions. If no items are listed in the Supplementary Conditions, it is understood by all parties that materials and/or equipment furnished on this Project shall be by the Contractor.

PART 2 - PRODUCT - NOT USED

PART 3 - EXECUTION - NOT USED

END OF SECTION

Blake Fogleman

Subject: FW: 1023-Change Order
Attachments: Ashton_Rain_Days_Dec_March.pdf

From: Blake Fogleman [mailto:bfogleman@eesinc.net]
Sent: Monday, April 15, 2013 10:35 AM
To: jlcazes@charter.net
Subject: FW: 1023-Change Order

Can you review the attachment? Or here are the days please back check with your notes and let me know what you have.

Dec 2012 - 4, 5, 6, 10, 17, 19, 20, 25, 28 = 9 days
Jan 2013 - 1, 2, 3, 4, 8, 9, 10, 11, 14, 15, 16, 29, 30 = 13 days
Feb 2013 - 4, 5, 6, 7, 11, 12, 13, 19, 22, 25 = 10 days
Mar 2013 - 11, 16 = 2 days

Per section 01010 page 5 in the specs they should only get

Dec: 9 requested - 8 expected = 1 day
Jan: 13 req. - 11 exp. = 2 days
Feb: 10 req. - 10 exp. = 0 days
Mar: 2 req. - 7 exp. = 0 days

Totalling 3 days extra

Thanks,
Blake

Blake E. Fogleman, P.E.
Environmental Engineering Services, Inc.
610 Belle Terre Blvd.
LaPlace, LA 70068
Office Phone: 985-653-0185
Office Fax: 985-653-0182
Cell Phone: 337-501-6696

From: Mark Boudreaux [mailto:mboudreaux@aqconstruction.net]
Sent: Monday, April 15, 2013 9:58 AM
To: Blake Fogleman
Subject: RE: 1023-Change Order

See the attached calendars for Luling, La.

We are requesting 34 weather/rain days for the months of December 2012 through March 2013 for the Ashton Plantation project. Let me know if you need something more formal.

Thank You

Mark Boudreaux
Project Manager
AQ Construction Inc.
985-893-3472 P
985-893-3461 F
985-966-4288 C

From: Blake Fogleman [mailto:bfogleman@eesInc.net]
Sent: Monday, April 15, 2013 8:57 AM
To: Mark Boudreaux
Subject: 1023-Change Order

Mark,

I am about to put in the change order for the river sand and conflict boxes. I can't seem to put my hands on any documents requesting weather days. I may have misplaced them. Can you send requested days, if any, such that I can submit a single change order for all items?

Thanks,
Blake

Blake E. Fogleman, P.E.
Environmental Engineering Services, Inc.
610 Belle Terre Blvd.
LaPlace, LA 70068
Office Phone: 985-653-0185
Office Fax: 985-653-0182
Cell Phone: 337-501-6696

History: Weather Underground

Luling, La.

* Previous Month		December 2012				Next Month *	
Sunday	Monday	Tuesday	Wednesday	Thursday	Friday	Saturday	
2 Actual: 79 55 Precip: 0.00 Average: 67 47 Precip: 0.11	3 Actual: 79 58 Precip: 0.00 Average: 66 47 Precip: 0.39	4 Actual: 78 54 Precip: 1.73 Average: 65 44 Precip: 0.23	5 Actual: 89 62 Precip: 0.55 Average: 65 44 Precip: 0.06	6 Actual: 73 62 Precip: 0.00 Average: 68 45 Precip: 0.31	7 Actual: 72 55 Precip: 0.06 Average: 65 46 Precip: 0.15	8 Actual: 77 55 Precip: 0.00 Average: 66 45 Precip: 0.04	9 Actual: 75 48 Precip: 0.04 Average: 57 45 Precip: 0.11
9 Actual: 80 54 Precip: 0.01 Average: 66 47 Precip: 0.27	10 Actual: 75 50 Precip: 0.31 Average: 64 45 Precip: 0.17	11 Actual: 50 43 Precip: 0.00 Average: 64 46 Precip: 0.12	12 Actual: 52 44 Precip: 0.00 Average: 55 46 Precip: 0.14	13 Actual: 52 41 Precip: 0.00 Average: 65 45 Precip: 0.18	14 Actual: 68 41 Precip: 0.00 Average: 53 47 Precip: 0.10	15 Actual: 75 50 Precip: 0.00 Average: 55 45 Precip: 0.29	16 Actual: 73 62 Precip: 0.01 Average: 62 43 Precip: 0.09
22 Actual: 69 51 Precip: 0.00 Average: 63 45 Precip: 0.14	23 Actual: 78 52 Precip: 0.00 Average: 60 43 Precip: 0.14	24 Actual: 76 52 Precip: 0.67 Average: 53 43 Precip: 0.27	25 Actual: 75 55 Precip: 0.08 Average: 65 45 Precip: 0.10	26 Actual: 73 48 Precip: 0.35 Average: 65 48 Precip: 0.18	27 Actual: 57 43 Precip: 0.00 Average: 55 47 Precip: 0.17	28 Actual: 63 37 Precip: 0.00 Average: 63 45 Precip: 0.16	29 Actual: 70 46 Precip: 0.00 Average: 65 45 Precip: 0.17
30 Actual: 48 35 Precip: 0.00 Average: 63 45 Precip: 0.28	31 Actual: 68 43 Precip: 0.06 Average: 62 45 Precip: 0.28	1 Actual: 50 41 Precip: 0.00 Average: 65 44 Precip: 0.25	2 Actual: 52 39 Precip: 0.00 Average: 50 40 Precip: 0.05	3 Actual: 58 39 Precip: 0.00 Average: 65 44 Precip: 0.25	4 Actual: 70 46 Precip: 0.55 Average: 65 45 Precip: 0.17	5 Actual: 50 41 Precip: 0.00 Average: 62 47 Precip: 0.16	6 Actual: 50 41 Precip: 0.00 Average: 62 47 Precip: 0.16

9 Weather Days

Month Precipitation - Actual month total: 4.31 Average month total: 5.17

Calendar Key

History - Weather Underground

Luling, La.

Previous Month	2012	January 2013				2014	Next Month
Sunday	Monday	Tuesday	Wednesday	Thursday	Friday	Saturday	
0	13 Weather Days	1	2	3	4	5	
6	7	8	9	10	11	12	
13	14	15	16	17	18	19	
20	21	22	23	24	25	26	
27	28	29	30	31			
Month Precipitation - Actual month total: 5.35 Average month total: 5.72							

Calendar Key

	Sunny		Mostly Cloudy		Mostly Sunny		Snow
	Clear		Partly Sunny		Partly Cloudy		Rain
	Hail		Thunderstorms		Fog		Unknown
	Flurries		Ice		Sleet		77 denotes balance of

Actual:	90 56
Precip:	0.00
Average:	71 53
Precip:	0.03

Data Category	Condition
High Temp.	Lo Temp.
Precip. (in inches)	Daily Avg. Temp.
Temp. in °F	
60-90	0-30
60	60
90	120

History-Weather Underground

Luling, La.

Previous Month	2012	February 2013				Next Month
Sunday	Monday	Tuesday	Wednesday	Thursday	Friday	Saturday
<p><i>0 - 10 - Weather Days</i></p> <p>Actual: 66 46 Precip: 0.00 Average: 62 44 Precip: 0.17</p>	<p>Actual: 64 52 Precip: 0.37 Average: 61 42 Precip: 0.23</p>	<p>Actual: 70 55 Precip: 0.00 Average: 68 41 Precip: 0.46</p>	<p>Actual: 58 57 Precip: 0.51 Average: 59 42 Precip: 0.44</p>	<p>Actual: 70 55 Precip: 1.10 Average: 58 40 Precip: 0.07</p>	<p>Actual: 64 46 Precip: 0.00 Average: 63 46 Precip: 0.31</p>	<p>Actual: 64 54 Precip: 0.00 Average: 60 40 Precip: 0.17</p>
<p>Actual: 75 61 Precip: 0.09 Average: 62 40 Precip: 0.24</p>	<p>Actual: 66 57 Precip: 0.24 Average: 63 41 Precip: 0.07</p>	<p>Actual: 78 57 Precip: 0.04 Average: 68 42 Precip: 0.24</p>	<p>Actual: 66 46 Precip: 0.08 Average: 64 44 Precip: 0.13</p>	<p>Actual: 59 42 Precip: 0.00 Average: 66 46 Precip: 0.17</p>	<p>Actual: 61 42 Precip: 0.00 Average: 67 49 Precip: 0.33</p>	<p>Actual: 54 39 Precip: 0.01 Average: 65 47 Precip: 0.13</p>
<p>Actual: 68 37 Precip: 0.09 Average: 64 46 Precip: 0.14</p>	<p>Actual: 66 51 Precip: 0.04 Average: 65 47 Precip: 0.22</p>	<p>Actual: 64 52 Precip: 0.31 Average: 66 46 Precip: 0.03</p>	<p>Actual: 55 45 Precip: 0.80 Average: 66 48 Precip: 0.10</p>	<p>Actual: 75 52 Precip: 0.02 Average: 68 49 Precip: 0.42</p>	<p>Actual: 71 57 Precip: 0.08 Average: 66 48 Precip: 0.25</p>	<p>Actual: 60 55 Precip: 0.37 Average: 65 46 Precip: 0.06</p>
<p>Actual: 63 51 Precip: 0.79 Average: 66 45 Precip: 0.22</p>	<p>Actual: 65 60 Precip: 1.02 Average: 67 45 Precip: 0.60</p>	<p>Actual: 60 46 Precip: 0.00 Average: 66 46 Precip: 0.25</p>	<p>Actual: 69 48 Precip: 0.06 Average: 66 45 Precip: 0.11</p>	<p>Actual: 54 46 Precip: 0.00 Average: 67 49 Precip: 0.07</p>	<p>Actual: 60 46 Precip: 0.00 Average: 67 49 Precip: 0.07</p>	<p>Actual: 60 46 Precip: 0.00 Average: 67 49 Precip: 0.07</p>

Month Precipitation - Actual month total: 3.95 Average month total: 3.62

Calendar Key

	Sunny		Mostly Cloudy		Mostly Sunny		Rain		Snow
	Clear		Partly Sunny		Partly Cloudy		Cloudy		Sleet
	Hail		Thunderstorms		Fog		77 denotes absence of		Unknown
	Hurries								

Actual:	90 58
Precip:	0.00
Average:	71 53
Precip:	0.03

Data Category	Condition
High Temp.	90 58
Low Temp.	0.00
Daily Avg. Temp.	71 53
Temp. in °F	0.03

History: Weather Underground

Lakings, La.

Previous Month		2012		March 2013		Next Month	
Sunday	Monday	Tuesday	Wednesday	Thursday	Friday	Saturday	
 Actual: 55 35 Precip: 0.00 Average: 59 51 Precip: 0.42	 Actual: 70 42 Precip: 0.05 Average: 63 51 Precip: 0.17	 Actual: 75 53 Precip: 0.06 Average: 68 50 Precip: 0.26	 Actual: 62 45 Precip: 0.09 Average: 67 48 Precip: 0.08	 Actual: 62 44 Precip: 0.09 Average: 67 48 Precip: 0.09	 Actual: 61 44 Precip: 0.09 Average: 68 49 Precip: 0.15	 Actual: 52 37 Precip: 0.09 Average: 71 51 Precip: 0.28	
 Actual: 75 63 Precip: 0.52 Average: 72 51 Precip: 0.66	 Actual: 66 46 Precip: 0.09 Average: 71 52 Precip: 0.05	 Actual: 66 46 Precip: 0.09 Average: 71 52 Precip: 0.18	 Actual: 56 45 Precip: 0.09 Average: 74 52 Precip: 0.07	 Actual: 66 43 Precip: 0.09 Average: 72 51 Precip: 0.07	 Actual: 75 46 Precip: 0.09 Average: 72 53 Precip: 0.19	 Actual: 75 52 Precip: 0.09 Average: 78 52 Precip: 0.24	
 Actual: 78 57 Precip: 0.00 Average: 78 51 Precip: 0.21	 Actual: 82 56 Precip: 0.03 Average: 72 52 Precip: 0.34	 Actual: 73 59 Precip: 0.09 Average: 73 52 Precip: 0.13	 Actual: 59 55 Precip: 0.02 Average: 71 53 Precip: 0.17	 Actual: 54 51 Precip: 0.09 Average: 71 50 Precip: 0.29	 Actual: 78 55 Precip: 0.02 Average: 78 50 Precip: 0.22	 Actual: 75 54 Precip: 0.09 Average: 72 50 Precip: 0.15	
 Actual: 72 51 Precip: 0.09 Average: 72 50 Precip: 0.22	 Actual: 69 41 Precip: 0.09 Average: 71 52 Precip: 0.10	 Actual: 55 41 Precip: 0.09 Average: 70 52 Precip: 0.26	 Actual: 60 39 Precip: 0.09 Average: 73 52 Precip: 0.09	 Actual: 68 42 Precip: 0.09 Average: 74 56 Precip: 0.22	 Actual: 73 48 Precip: 0.09 Average: 74 57 Precip: 0.33	 Actual: 75 55 Precip: 0.09 Average: 72 56 Precip: 0.15	
 Actual: 81 57 Precip: 0.31 Average: 73 53 Precip: 0.18	Month: Precipitation - Actual month total: 0.81 Average month total: 5.21						

0 2 - Weather Days

Calendar Key

Blake Fogleman

From: Lee Zeringue <lzeringue@stcharlesgov.net>
Sent: Thursday, May 09, 2013 12:11 PM
To: Mark Boudreaux; Oscar Boudreaux; bfogleman@eesinc.net
Cc: Bob Dublan; Russell Tastet; Chris Tregre; Sam Scholle; LJ Brady; Butch Clay; jlcazes@charter.net
Subject: RE: 1023 - Canal behind Baseball Park

Since other factors are coming into play let me be clear. Getting that bank repaired and the contractor out is priority. Anything that can be filled should be filled with good soil. The occasional bucket of muck I will let slide. Forcing the contractor to rip up the road bringing in other soils.

Also if there is any directive it should be in writing.

I NEED THE CONTRACTOR OUT OF THE AREA ASAP. IF WE HAVE TO DO FURTHER REPAIRS LATER HE WILL DO THEM.

Lawrence "Lee" Zeringue, PE
Senior Parish Engineer
Department of Public Works/Wastewater

From: Mark Boudreaux [mailto:mboudreaux@aqconstruction.net]
Sent: Thursday, May 09, 2013 10:53 AM
To: Oscar Boudreaux; Lee Zeringue; bfogleman@eesinc.net
Cc: Bob Dublan; Russell Tastet; Chris Tregre; Sam Scholle; LJ Brady; Butch Clay; jlcazes@charter.net
Subject: RE: 1023 - Canal behind Baseball Park

I have been in contact with Harry and with US Underground this morning. I instructed Harry to remove the material from the channel today. We will rebuild the bank of the canal as soon as possible.

Thank You

Mark Boudreaux
Project Manager
AQ Construction Inc.
985-893-3472 P
985-893-3461 F
985-966-4285 C

From: Oscar Boudreaux [mailto:oboudreaux@eesinc.net]
Sent: Thursday, May 09, 2013 10:36 AM
To: 'Lee Zeringue'; bfogleman@eesinc.net; Mark Boudreaux
Cc: 'Bob Dublan'; 'Russell Tastet'; 'Chris Tregre'; 'Sam Scholle'; ljbrady@stcharlesgov.net; Butch Clay; jlcazes@charter.net
Subject: RE: 1023 - Canal behind Baseball Park

Lee, We will pass on your instructions....

Mark, you need to read below and adhere to the client's instructions.....your earliest attention to this matter is appreciated.

Oscar J. Boudreaux, Jr. P.E.
Environmental Engineering Services, Inc.
610 Belle Terre Blvd
Laplace, LA 70068
(office) 985-653-0185
(fax) 985-653-0182
(cell) 225-933-7280
(home) 225-819-1360

From: Lee Zeringue [<mailto:lzingue@stcharlesgov.net>]
Sent: Thursday, May 09, 2013 10:18 AM
To: Oscar Boudreaux (oboudreaux@eesinc.net); bfogleman@eesinc.net
Cc: Bob Dublan; Russell Tastet; Chris Tregre; Sam Scholle
Subject: FW: 1023 - Canal behind Baseball Park

I have just come back from the site and to call what is out there an unmitigated disaster is an understatement. The bank is still blocking about one third of the canal. The trench is about 80 feet long and very deep. The banks of the trench are failing and have widened the trench to about 10' or more. There are fissures about 2 feet off of the baseball field fence. I do not feel that the contractor took the necessary precautions before performing the work.

I have instructed the contractor out there now to get his work done and have that area backfilled and the canal clean by the end of today. With the weather coming that canal shall be open or you risk the potential flooding of 1000+ homes in the Luling area. The weather coming this weekend will see how the bank holds. I have the feeling that it should if it is compacted well enough. The foreman for AQ has promised me that he will do what he can to fix the situation. He is about the only person I trust out there to do what he says. As always the contractor is responsible for any and all repairs to the entire area (see condition of the pump station road).

Come Monday if there is sloughing off of the canal bank AQ may be required to place sheet piles be placed along the canal bank 10 feet beyond the failed section. These piles will remain in place.

Lawrence "Lee" Zeringue, PE
Senior Parish Engineer
Department of Public Works/Wastewater

From: Murray Dufrene
Sent: Thursday, May 09, 2013 9:12 AM
To: Blake Fogleman; Mark Boudreaux
Cc: Lee Zeringue; LJ Brady; Butch Clay; OBOUDREAUX@EESINC.NET; jlcazes@charter.net; harry.spiers@yahoo.com; blipsmeyer@usunderground.com; Bob Dublan; Russell Tastet; Chris Tregre; Sam Scholle
Subject: Re: 1023 - Canal behind Baseball Park

What started as a small excavation behind baseball feild has turned into a large unstable area as seen in attached pics. Soil continues to slide into canal, now blocking approximate 1/3 or more of Canal. Rain is in the forecast for tomorrow. Only 4-5 feet of soil remain before fence for ball park falls into excavation. This cannot continue, it has gone far enough.

Connected by DROID on Verizon Wireless
CELL # [504 377 0184](tel:5043770184)

-----Original message-----

From: Blake Fogleman <bfogleman@eesinc.net>

To: Mark Boudreaux <mboudreaux@aqconstruction.net>

Cc: Lee Zeringue <lzingue@stcharlesgov.net>, LJ Brady <lbrady@stcharlesgov.net>, Murray Dufrene <mdufrene@stcharlesgov.net>, Butch Clay <butchclay@stcharlesgov.net>, "OBOUDREAU@EESINC.NET" <OBOUDREAU@EESINC.NET>, "jlcazes@charter.net" <jlcazes@charter.net>, "harry.spiers@yahoo.com" <harry.spiers@yahoo.com>, "blipsmeyer@usunderground.com" <blipsmeyer@usunderground.com>

Sent: Thu, May 9, 2013 13:35:03 GMT+00:00

Subject: 1023 - Canal behind Baseball Park

Mark,

We were advised by the Parish this morning of their concerns about the stabilization of the bank of the canal located behind the recreation park. By the end of the day today, we expect you to submit the means and methods of how you will restore the canal bank. We anticipate a lot of rainfall in the next two days which raises the concern of erosion in your construction area. Be advised that any damage or erosion in this area caused by your construction activities will be restored to its original condition by soil stabilization or left in place sheet piling.

Just a reminder, the 8" force main to Hackberry is available for the restoration of the Ashton Lift Station. No additional time will be given on this project after June 27, 2013. We recommend that you make contingency plans for the installation of the force main which US Underground is working on should they fail to free the pipe. Furthermore, you should begin work on the upgrade of Ashton Lift Station to allow your completion before the end of June.

Thanks,
Blake

Blake E. Fogleman, P.E.
Environmental Engineering Services, Inc.
610 Belle Terre Blvd.
LaPlace, LA 70068
Office Phone: 985-653-0185
Office Fax: 985-653-0182
Cell Phone: 337-501-6696

Advanced Quality Construction, Inc.

22161 Marshall Rd. Ste. C Mandeville, La. 70471
P- 985-893-3472 / F- 985-893-3471

Re: Upgrade to Ashton Pump
Station and Forced Main

St Charles Parish

Advanced Quality Construction is requesting a change order for a new electrical and control panel rack for Ashton Pump Station. The cost to upgrade the rack and relocate it are as follows:

1. Aluminum rack assembly with Stainless Steel Fasteners and additional pull box required by Entergy not in the original drawing, \$ 2800.00
2. Concrete footing for electrical rack including labor, materials, tie in to existing concrete and additional paving on north side of panels. \$ 1200.00
3. Credit for addition to existing rack called for in the original bid, (\$450.00)

Total for rack replacement and relocation, \$ 3550.00

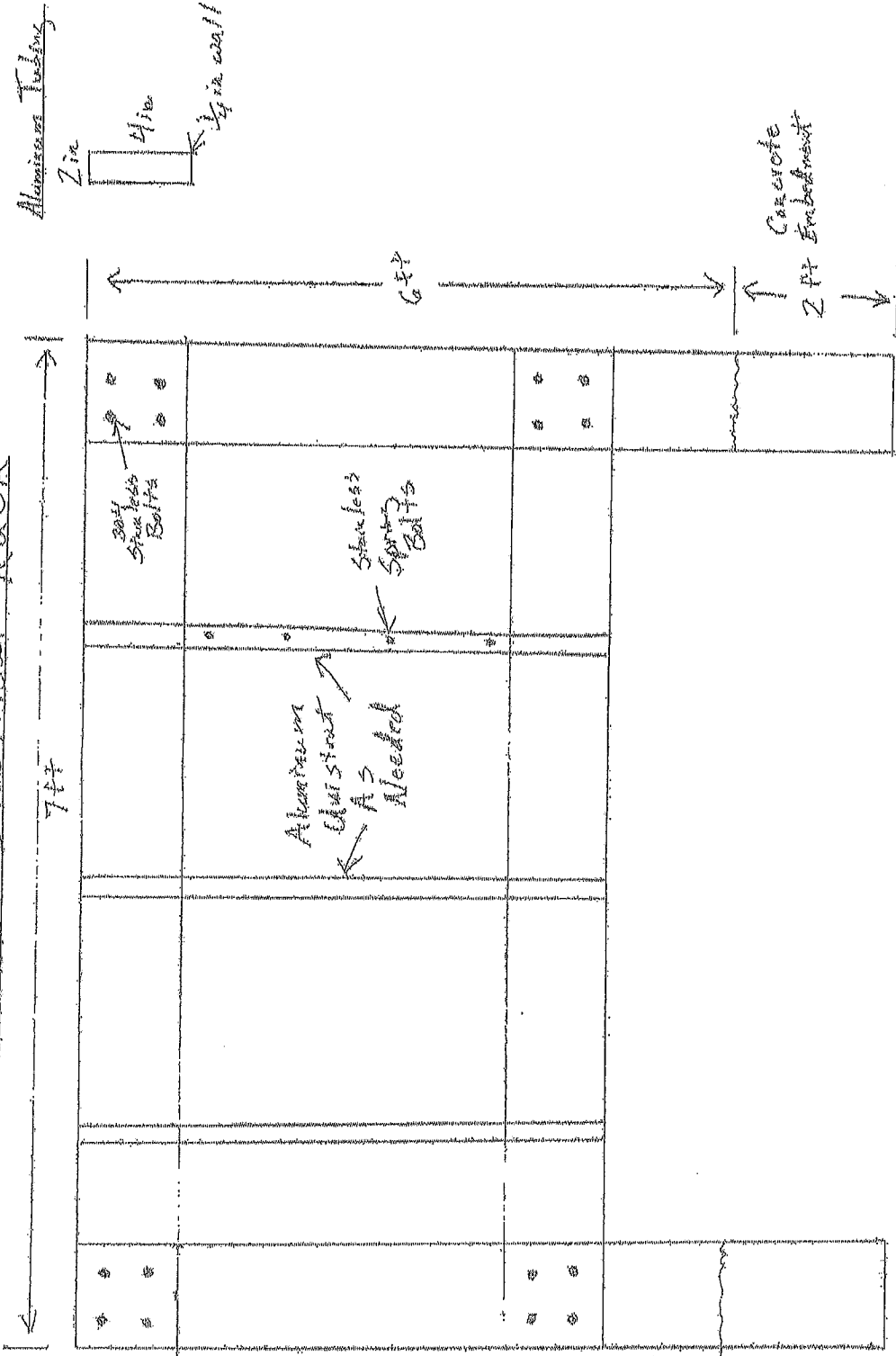
AQ Construction is requesting an addition ~~13 days to be added~~ to the contract time for construction of the rack, concrete placement, and coordination of relocation with the utility company.

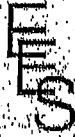
Mark Boudreaux
Project Manager
AQ Construction Inc.

Days Not Approved

3 DAYS Approved

Ashton Electrical Rack





**Environmental
Engineering
Services, Inc.**

Consulting Engineers

610 Belle Terre Boulevard
LaPlacé, Louisiana 70068
Phone: (985) 653-0185
Fax: (985) 653-0182

www.eesinc.net

OSCAR J. BOUDREAU, JR., P.E.
BLAKE E. FOGLEMAN, P.E.

July 1, 2013

Kirk Van Camp, Vice President
Advanced Quality Construction, Inc.
22161 Marshall Road, Ste C
Mandeville, LA 70471

RE: Notice of Contract Violation

Upgrade to Ashton Pump Station & Force Main
St. Charles Parish, LA
EES Project No. 1023
SCP Project No. S100902

Dear Mr. Van Camp,

In accordance with the terms and conditions of your construction contract with St. Charles Parish for the above referenced project, your contract time expired as stated in the Notice to Proceed on June 3, 2013. Change Order No. 1 allotted three (3) additional days moving the completion time to June 6, 2013. Change Order No. 2 which is pending allowed an additional twenty (20) days for the directional drilling problems associated with your subcontractor. This additional time was verbally agreed upon but has not been approved in writing. You have requested an additional thirteen (13) days for moving the electrical rack. Our understanding of the field conditions were that the rack needed to be moved anyway because of your top slab. The Owner is agreeable to a three (3) calendar day extension. This additional time sets a new completion date of July 2, 2013.

Be advised that the Owner may assess liquidated damages per contract agreement for each day beyond the July 2, 2013 completion date. This notice is being provided to you on behalf of our client, St. Charles Parish.

Sincerely,
ENVIRONMENTAL ENGINEERING SERVICES, INC.

Oscar J. Boudreau, Jr., P.E.

c: V.J. St. Pierre, Parish President
Lee Zeringue, Parish Engineer
L.J. Brady, Wastewater Supervisor

Advanced Quality Construction, Inc.

22161 Marshall Rd. Ste. C Mandeville, La. 70471
P- 985-893-3472 / F- 985-893-3471

Re: Upgrade to Ashton Pump Station and Forced Main
St Charles Parish, La.
SCP Project # S100902

1/23/2014

Oscar,

After our phone conversation today I would like to clarify AQ's understanding of the contract time for this project. The contract was for 180 days until substantial completion. During the meeting at the baseball field, toward the later part of the contract you and Lee agreed to add 30 days to the contract for rain and other delays. The original NTP put the last day of the contract at June 3. If we add the 30 days the final contract day was July 3. The pump station was ready for startup on July 12 but the parish wanted to postpone it until Monday July 15 with the agreement that AQ would not be penalized for the weekend.

This scenario was discussed again with the parish president at his office and we were all in agreement that AQ was 10 days over the contract time. The president agreed to charge AQ no more than 5 days of LD's if AQ completed the punch list in 45 days. AQ did complete the punch list before the Sept 23 deadline.

If you have any questions let me know.

Thank You

Mark Boudreaux
AQ Construction Inc.