

2021 REDISTRICTING

Presented by:

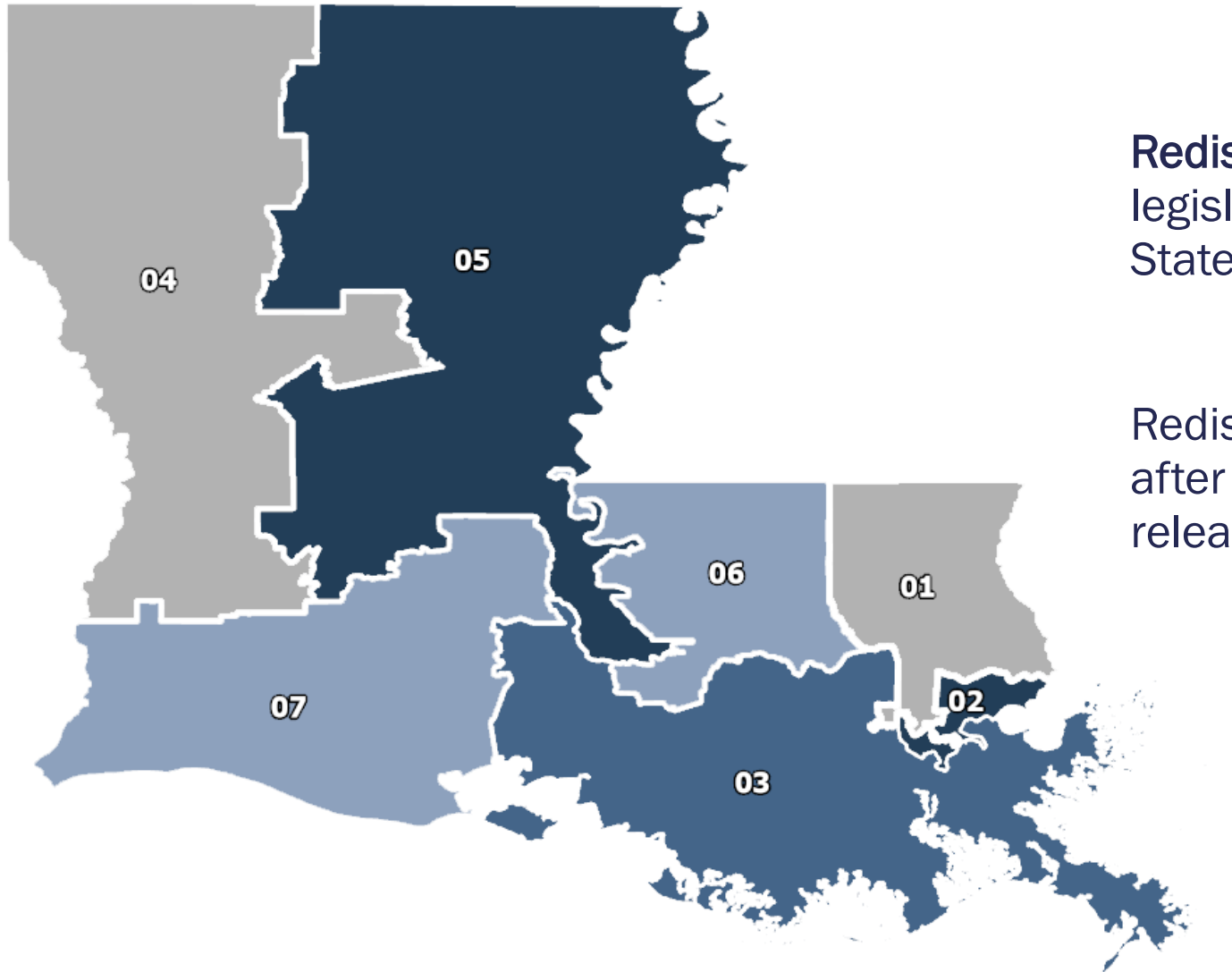
Joshua Manning, Planner IV

South Central Planning & Development
Commission

SCPDC

**South Central Planning &
Development Commission**

What is Redistricting?



Redistricting is the redrawing of legislative districts. This includes US, State, and Local election boundaries.

Redistricting takes place every 10 years, after the results of the **Census** are released to the states.

Why Do We Do It?

Because people move!

- Communities are constantly changing for social, economic, and environmental reasons.
- Births, deaths, and in- & out-migration are significant factors.



Why Do We Do It?

We do it because the law says to!

- U.S. Constitution Article 1, Section 2 (Congress)
- 14th Amendment (Equal Protection Clause)
- Voting Rights Act of 1965 – Prohibits plans that intentionally or inadvertently discriminate on the basis of race, which could dilute the minority vote

Why Do We Do It?

Louisiana Laws:

- State Constitution Article III, 6 (State Legislative Offices)
- Louisiana Revised Statutes 33:1371 (Municipalities)
- Louisiana Revised Statutes 33:1411 (Parochial Governments)
- Louisiana Revised Statutes 17:71.1 - 17:71.7 (School Boards)

2021 Redistricting Plan Goals



- Comply with all state and federal law
- **Compactness:** Having the minimum distance between all the parts of a constituency
- **Contiguity:** All parts of a district must be connected at some point with the rest of the district
- Preservation of **Communities of Interest:** Geographical areas, such as neighborhoods, where the residents have a common political interest
- Preservation of **cores of prior districts:** Maintaining districts as previously drawn to the extent possible
- Avoid pairing incumbents

REDISTRICTING TIMELINE

April 1, 2020
Census Day!

March 1, 2022
School Board Redistricting
Plans must be completed prior
to qualifying for Nov. 2022
elections.

July 20, 2022
Municipalities: Must be
complete prior to July 2022
qualifications.

~~April 2021~~ **Aug. 12, 2021**
Census Data Released to
States and Municipalities,
Redistricting Begins

March 30, 2022
Parish Councils/Police Juries/Municipalities
must determine the need for redistricting by
March 30 and indicate with a resolution. If
redistricting is needed, it must be completed by
the end of their term.

August 8, 2023
**Parish Council/
Police Jury**
qualifications

Tasks/Process

- Consultations with Council & Board Members
- Development of Alternatives (Min. 3)
- Public Hearings based on Council/Police Jury/School Board/Municipality procedures
- Allowing time for review by the Secretary of State's Office and State Legislature (determination if plan can be implemented)
- Submission to U.S. Department of Justice – Supreme Court has ruled against but this requirement is still in State Law



2020 Census Data (Baseline Plan)

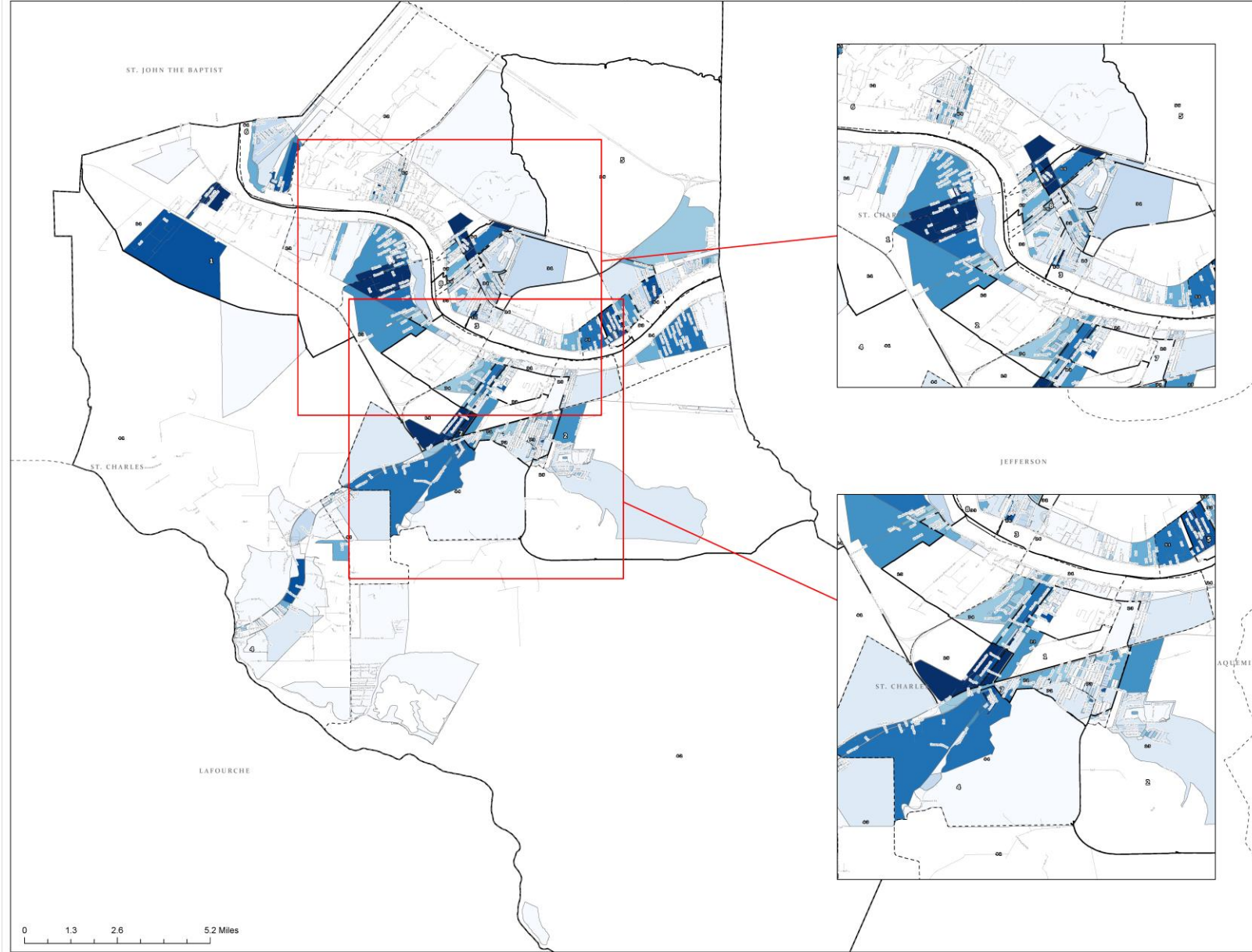
District	Pop	Dev.	% Dev.	% White	% Black
1	6,907	-600	-8.0%	41.0%	52.0%
2	7,119	-388	-5.2%	74.5%	14.5%
3	8,035	528	7.0%	72.1%	13.8%
4	6,445	-1,062	-14.1%	76.5%	15.5%
5	7,775	268	3.6%	44.2%	39.4%
6	7,545	38	0.5%	72.5%	18.3%
7	8,723	1,216	16.2%	66.4%	22.4%

Total Pop: 52,549 | Ideal District: 7,507 | Range: 30.3%



Percentage of Black Population by Census Block

SCPDC
South Central Planning &
Development Commission



Legend

- Parish
- Louisiana Roadways
- St. Charles Products
- 2010 School Board

Black Pop by Census Block

BLACK / POPULATION

0.000 - 0.02250
0.02257 - 0.06944
0.06945 - 0.1258
0.1258 - 0.19375
0.1938 - 0.2681
0.2682 - 0.4389
0.4390 - 0.6336
0.6337 - 0.8071
0.8072 - 1.000

SCPDPC is a 501(c)(3) non-profit organization. The information on this map was derived from the U.S. Census Bureau's 2010 Census of Population and Housing. The information is provided as a public service and is not intended to be used for any other purpose. The information is provided as a public service and is not intended to be used for any other purpose. The information is provided as a public service and is not intended to be used for any other purpose.



0 1.3 2.6 5.2 Miles

ST. CHARLES PARISH

LOUISIANA

CONTACT INFORMATION

Kevin Belanger | Joshua Manning
South Central Planning & Development Commission

scpdc.org

Office (985) 851-2900

kevin@scpdc.org | josh@scpdc.org