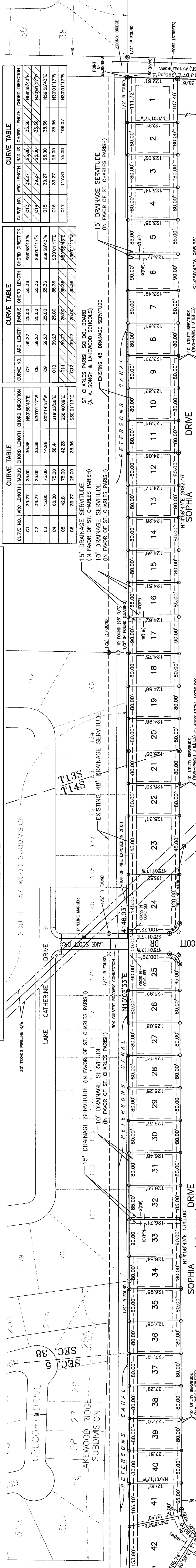
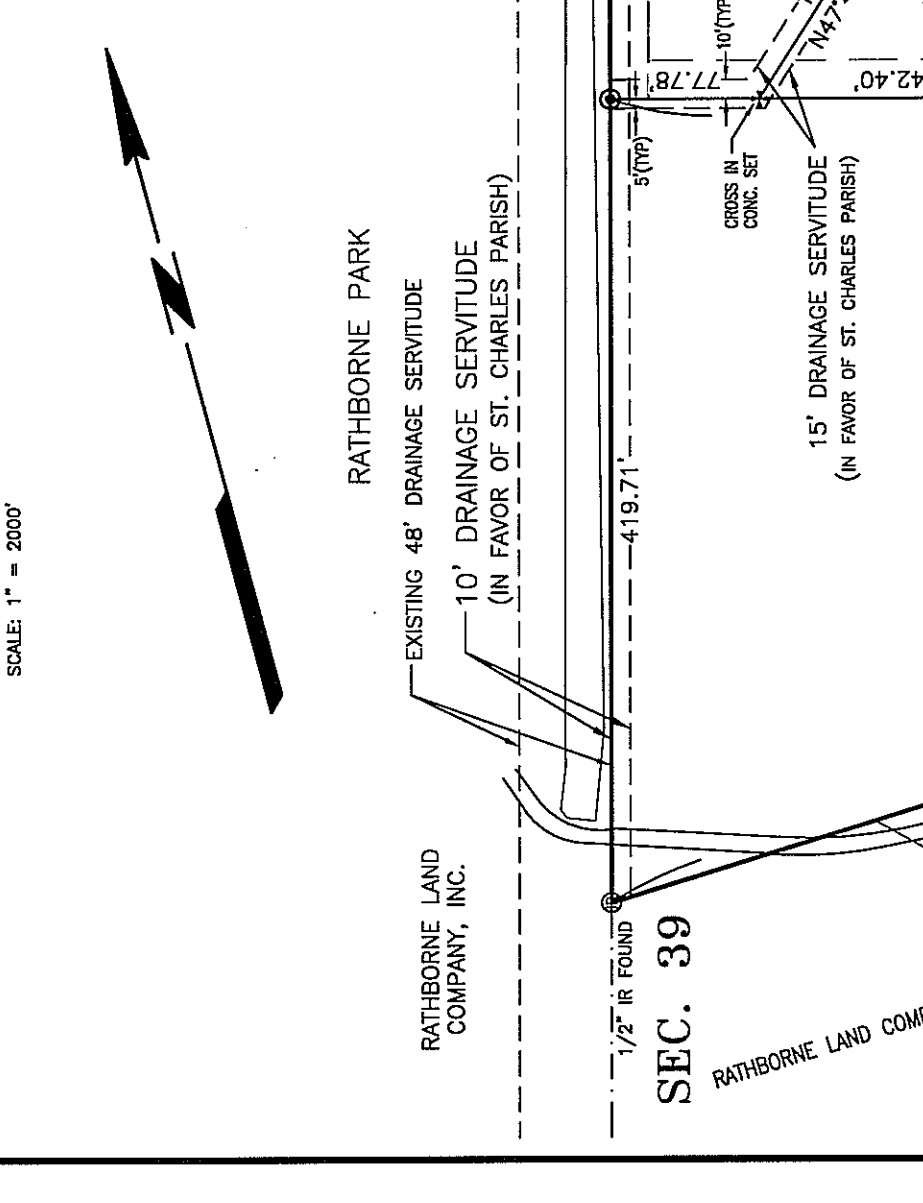


LOT NO.	AREA	AREA TABLE	AREA TABLE	AREA TABLE	AREA TABLE	AREA TABLE	AREA TABLE	AREA TABLE	AREA TABLE
1	13,438.73 SQ. FT.	26	10,077.91 SQ. FT.	51	9,000.00 SQ. FT.	76	9,000.00 SQ. FT.	101	9,000.00 SQ. FT.
2	9,837.33 SQ. FT.	27	10,068.89 SQ. FT.	52	10,126.00 SQ. FT.	77	9,000.00 SQ. FT.	102	9,000.00 SQ. FT.
3	9,846.33 SQ. FT.	28	10,068.89 SQ. FT.	53	10,126.00 SQ. FT.	78	9,000.00 SQ. FT.	103	9,000.00 SQ. FT.
4	9,855.33 SQ. FT.	29	10,068.89 SQ. FT.	54	9,942.50 SQ. FT.	79	10,126.00 SQ. FT.	104	9,000.00 SQ. FT.
5	10,148.13 SQ. FT.	30	10,148.13 SQ. FT.	55	9,000.00 SQ. FT.	80	9,000.00 SQ. FT.	105	9,000.00 SQ. FT.
6	10,148.13 SQ. FT.	31	10,148.13 SQ. FT.	56	9,000.00 SQ. FT.	81	9,000.00 SQ. FT.	106	9,000.00 SQ. FT.
7	10,148.13 SQ. FT.	32	10,148.13 SQ. FT.	57	9,000.00 SQ. FT.	82	9,000.00 SQ. FT.	107	9,000.00 SQ. FT.
8	9,892.98 SQ. FT.	33	10,148.13 SQ. FT.	58	9,000.00 SQ. FT.	83	9,000.00 SQ. FT.	108	9,000.00 SQ. FT.
9	9,892.98 SQ. FT.	34	10,148.13 SQ. FT.	59	9,000.00 SQ. FT.	84	9,000.00 SQ. FT.	109	9,000.00 SQ. FT.
10	9,892.98 SQ. FT.	35	10,148.13 SQ. FT.	60	9,000.00 SQ. FT.	85	9,000.00 SQ. FT.	110	9,000.00 SQ. FT.
11	9,892.98 SQ. FT.	36	10,148.13 SQ. FT.	61	9,000.00 SQ. FT.	86	9,000.00 SQ. FT.	111	9,000.00 SQ. FT.
12	9,892.98 SQ. FT.	37	10,148.13 SQ. FT.	62	9,000.00 SQ. FT.	87	9,000.00 SQ. FT.	112	9,000.00 SQ. FT.
13	9,892.98 SQ. FT.	38	10,148.13 SQ. FT.	63	9,000.00 SQ. FT.	88	9,000.00 SQ. FT.	113	9,000.00 SQ. FT.
14	9,892.98 SQ. FT.	39	10,148.13 SQ. FT.	64	9,000.00 SQ. FT.	89	9,000.00 SQ. FT.	114	9,000.00 SQ. FT.
15	10,148.13 SQ. FT.	40	10,148.13 SQ. FT.	65	9,000.00 SQ. FT.	90	9,000.00 SQ. FT.	115	9,000.00 SQ. FT.
16	10,148.13 SQ. FT.	41	10,148.13 SQ. FT.	66	9,000.00 SQ. FT.	91	9,000.00 SQ. FT.	116	9,000.00 SQ. FT.
17	10,148.13 SQ. FT.	42	10,148.13 SQ. FT.	67	9,000.00 SQ. FT.	92	9,000.00 SQ. FT.	117	9,000.00 SQ. FT.
18	9,846.33 SQ. FT.	43	12,662.25 SQ. FT.	68	9,000.00 SQ. FT.	93	9,000.00 SQ. FT.	118	9,000.00 SQ. FT.
19	9,846.33 SQ. FT.	44	12,662.25 SQ. FT.	69	9,000.00 SQ. FT.	94	9,000.00 SQ. FT.	119	9,000.00 SQ. FT.
20	9,846.33 SQ. FT.	45	12,662.25 SQ. FT.	70	9,000.00 SQ. FT.	95	9,000.00 SQ. FT.	120	9,000.00 SQ. FT.
21	10,021.68 SQ. FT.	46	9,000.00 SQ. FT.	71	9,000.00 SQ. FT.	96	9,000.00 SQ. FT.	121	9,000.00 SQ. FT.
22	10,021.68 SQ. FT.	47	9,000.00 SQ. FT.	72	9,000.00 SQ. FT.	97	9,000.00 SQ. FT.	122	9,000.00 SQ. FT.
23	10,021.68 SQ. FT.	48	9,000.00 SQ. FT.	73	9,000.00 SQ. FT.	98	9,000.00 SQ. FT.	123	9,000.00 SQ. FT.
24	10,021.68 SQ. FT.	49	9,000.00 SQ. FT.	74	9,000.00 SQ. FT.	99	9,000.00 SQ. FT.	124	9,000.00 SQ. FT.
25	11,192.77 SQ. FT.	50	9,000.00 SQ. FT.	75	9,000.00 SQ. FT.	100	9,000.00 SQ. FT.	125	9,000.00 SQ. FT.



FINAL PLAT
HEATHER OAKS
PHASE 1
LOTS 1 THROUGH 84, 124 THROUGH 128
& HOA MAINTAINED RECREATION LOT
IN SECTION 45, T13S - R21E
AND SECTION 39, T14S - R21E
ST. CHARLES PARISH, LOUISIANA
SCALE: 1" = 100'

30.555 ACRES
AREA

90 LOTS / PARCELS
NUMBER OF LOTS

50 FOOT
STREET R/W WIDTH

CONCRETE ROAD SURFACING
GRAVITY SEWERAGE SYSTEM
SUBSURFACE DRAINAGE SYSTEM

ZONING - R-1A
LENGTH OF STREET

LEGEND
IP = IRON PIPE
IR = IRON ROD
S = 60" SINK IRON CONC. SET
C = 60" CONC. SET
+ CROSS IN CONC. SET
X = 1/2" IRON ROD SET
P = PIPELINE MARKER

BEARINGS SHOWN HEREON ARE BASED ON THE LOUISIANA STATE PLANE COORDINATE SYSTEM SOUTH ZONE, NAD83 (2011) ESTABLISHED BY THE U.S. GEOLOGICAL SURVEY. THE STATE PLANE COORDINATE SYSTEM (Community Map 220160, Panel No. 0150, Suffix C, Dated June 16, 1992) found that this property is in Zone 4E.

RECORDING INFORMATION
C08 - 315 - 670 - 658813
Entry # _____

REFERENCE PLANS:
1. LOTS 1 THROUGH 125, EAST LINE OF PROPERTY OF DR. W. G. DAVIS PLANTATION PARK PHASE I, FINAL PLAT PLAN BY LINEFIELD, DAVIS PLANTATION PARK, INC., DATED JULY 29, 1980.
2. LOTS 1 THROUGH 125, EAST LINE OF PROPERTY OF DR. W. G. DAVIS PLANTATION PARK PHASE I, FINAL PLAT PLAN BY LINEFIELD, DAVIS PLANTATION PARK, INC., DATED JULY 29, 1980.
3. DAVIS PLANTATION PARK PHASE I, FINAL PLAT PLAN BY LINEFIELD, DAVIS PLANTATION PARK, INC., DATED JULY 29, 1980.
4. DAVIS PLANTATION PARK PHASE I, FINAL PLAT PLAN BY LINEFIELD, DAVIS PLANTATION PARK, INC., DATED JULY 29, 1980.
5. PARISH SCHOOL BOARD BY LUCEN C. GASSIN, PLS., DATED NOVEMBER 6, 1997.
6. SOUTH LAKWOOD SUBDIVISION BY DUPRE SURVEYING & ENGINEERING, INC., TILDON J. DUPRE, JR., PLS., DATED JUNE 30, 2002.
7. LAKWOOD EAST SUBDIVISION PHASES I & II BY J. MICHAEL SINKOV, PLS., DATED MARCH 14, 2002.
8. EFM CORPORATION, LLC, R. P. FORTGIBERT, JR., PLS., DATED FEBRUARY 21, 2002.

NOTICE: THIS PLAT REPRESENTS AN EXHIBIT APPROVED AND PERFORMED BY THE ENGINEER AND IS IN ACCORDANCE WITH THE Louisiana Standards of Practice for a Class C Survey. The information shown on this plan is based on the information provided to the Surveyor. The Surveyor has no liability for the accuracy of the information shown on this plan, and the Professional Land Surveyor is not responsible for the accuracy of the information shown on this plan, and the Professional Land Surveyor is not responsible for the accuracy of the information shown on this plan.

APPROVALS:
ST. CHARLES PARISH PLANNING AND ZONING COMMISSION CHAIRMAN
ST. CHARLES PARISH COUNCIL CHAIRMAN
ST. CHARLES PARISH PRESIDENT

DATE
DATE

OWNER:
HEATHER OAKS LLC
104 S. JEFFERSON STREET
BOSSARD, LOUISIANA 70518

DEVELOPER:
HEATHER OAKS DEVELOPMENT, LLC
104 S. JEFFERSON STREET
BOSSARD, LOUISIANA 70518

EDUCATION:
THE ST. CHARLES PARISH PLANNING AND ZONING COMMISSION HAS REVIEWED THIS PLAT AND HAS GRANTED THE NECESSARY APPROVALS FOR THE GENERAL USE OF THE PUBLIC. NO BUILDING STRUCTURE OR FENCE SHALL BE CONSTRUCTED, NOR SHRUBBERY PLANTED WITHIN THE PLAT AREA, UNLESS THE SAME IS SPECIFICALLY AUTHORIZED BY THE PLAT. ANY VIOLATION OF THIS PLAT SHALL BE CONSIDERED A VIOLATION OF THE PLAT AND SHALL BE SUBJECT TO THE PENALTIES PROVIDED THEREIN.

SEWERAGE DISPOSAL:
NO PERSON SHALL PROVIDE A METHOD OF SEWERAGE DISPOSAL EXCEPT AS SHOWN ON THIS PLAT. ANY METHOD OF SEWERAGE DISPOSAL NOT SHOWN ON THIS PLAT SHALL BE CONSIDERED A VIOLATION OF THE PLAT AND SHALL BE SUBJECT TO THE PENALTIES PROVIDED THEREIN.

LOUIS J. GASSIN, JR., PLS.
Registration No. 4849
1028 Gasson Street
Luling, Louisiana 70070

GASSEN SURVEYING, LLC
PAGE 1 OF 1