

St. Charles Parish

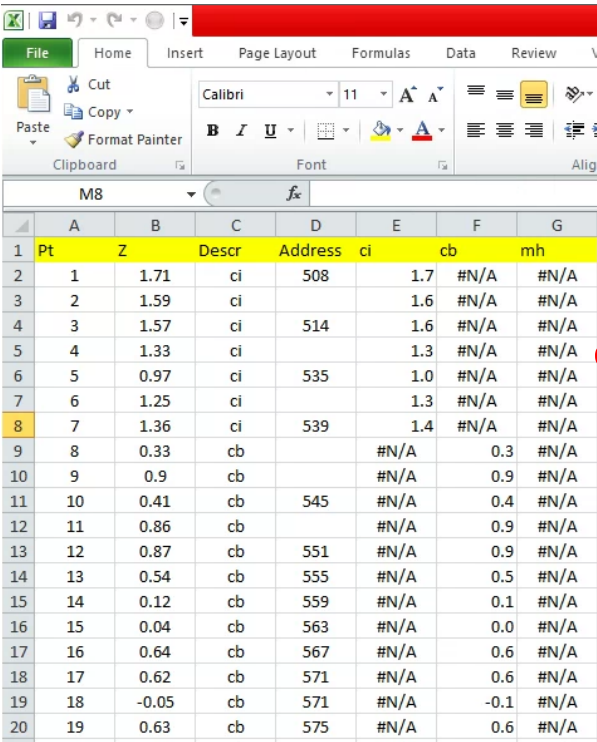
Geographic Information Systems

January 9, 2024

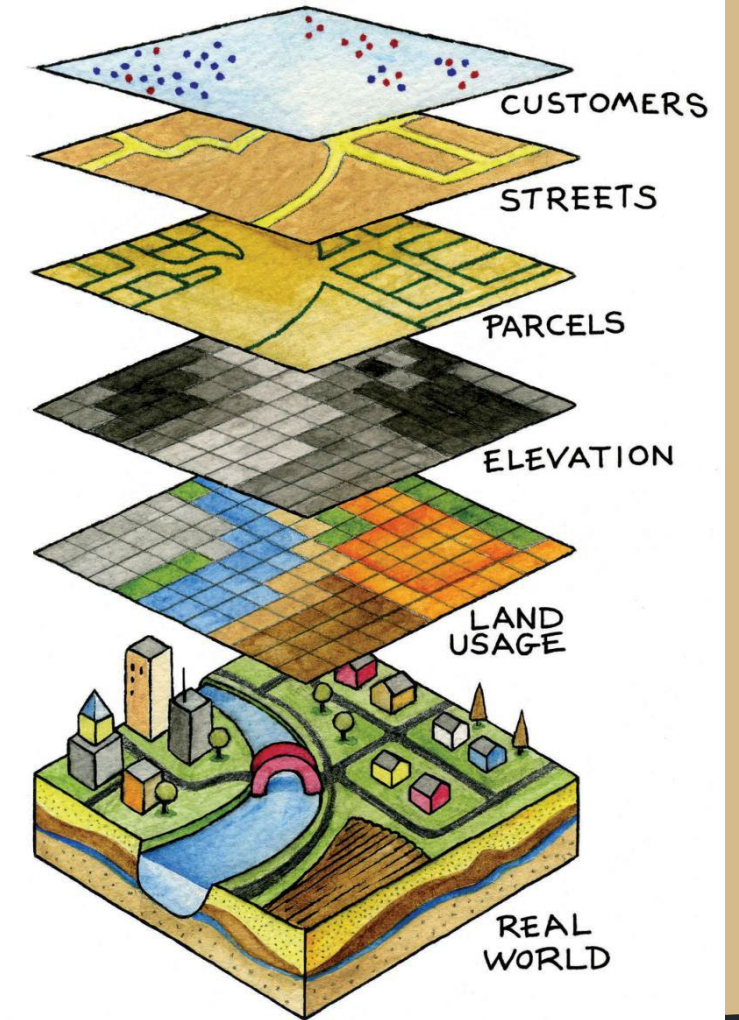
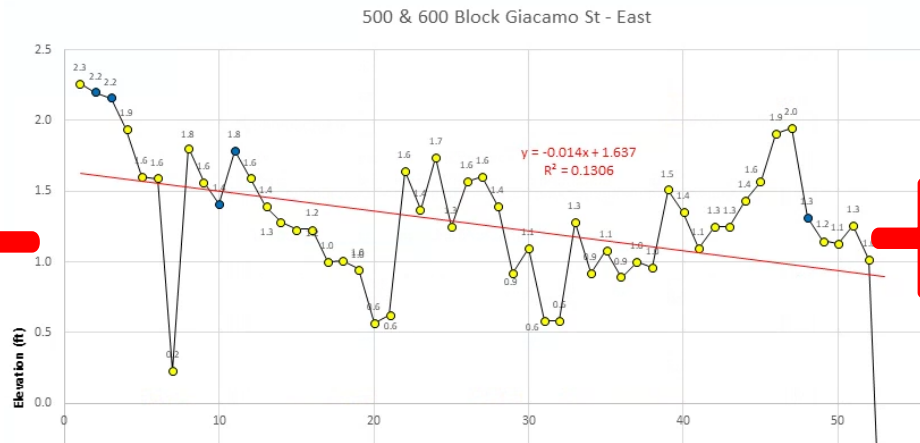
Luis Martinez



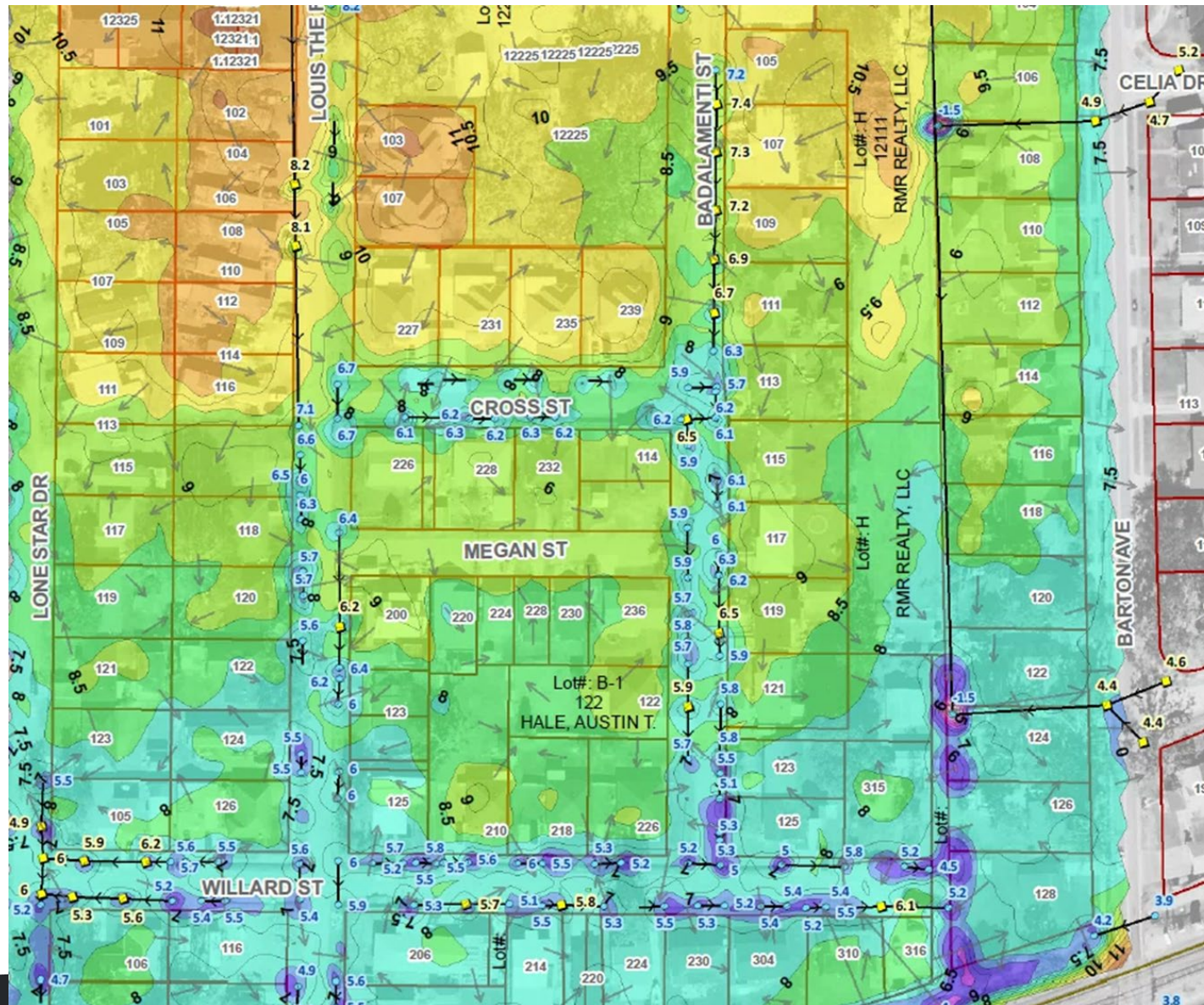
What is GIS?



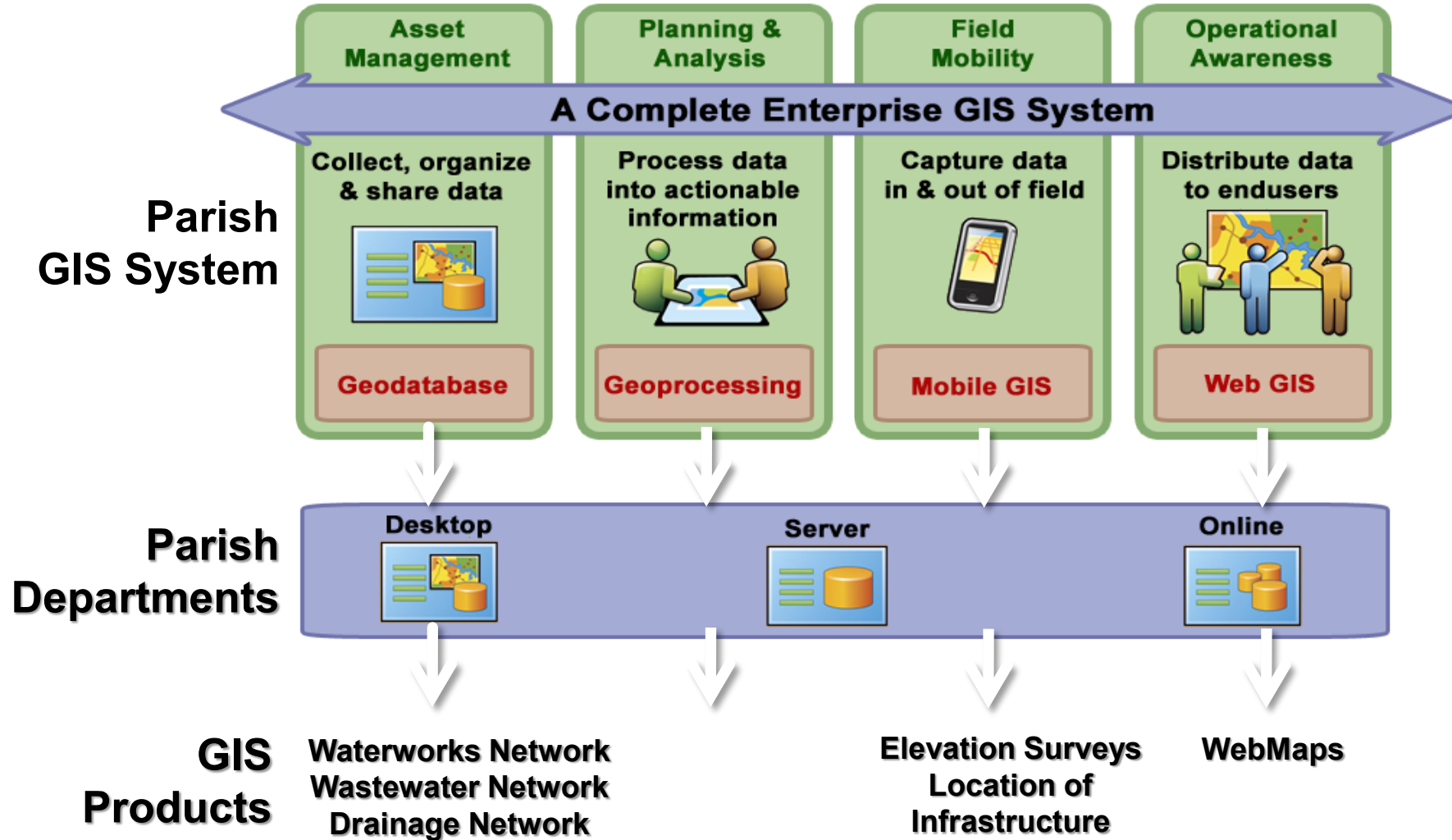
	A	B	C	D	E	F	G
1	Pt	Z	Descr	Address	ci	cb	mh
2	1	1.71	ci	508	1.7	#N/A	#N/A
3	2	1.59	ci		1.6	#N/A	#N/A
4	3	1.57	ci	514	1.6	#N/A	#N/A
5	4	1.33	ci		1.3	#N/A	#N/A
6	5	0.97	ci	535	1.0	#N/A	#N/A
7	6	1.25	ci		1.3	#N/A	#N/A
8	7	1.36	ci	539	1.4	#N/A	#N/A
9	8	0.33	cb		#N/A	0.3	#N/A
10	9	0.9	cb		#N/A	0.9	#N/A
11	10	0.41	cb	545	#N/A	0.4	#N/A
12	11	0.86	cb		#N/A	0.9	#N/A
13	12	0.87	cb	551	#N/A	0.9	#N/A
14	13	0.54	cb	555	#N/A	0.5	#N/A
15	14	0.12	cb	559	#N/A	0.1	#N/A
16	15	0.04	cb	563	#N/A	0.0	#N/A
17	16	0.64	cb	567	#N/A	0.6	#N/A
18	17	0.62	cb	571	#N/A	0.6	#N/A
19	18	-0.05	cb	571	#N/A	-0.1	#N/A
20	19	0.63	cb	575	#N/A	0.6	#N/A



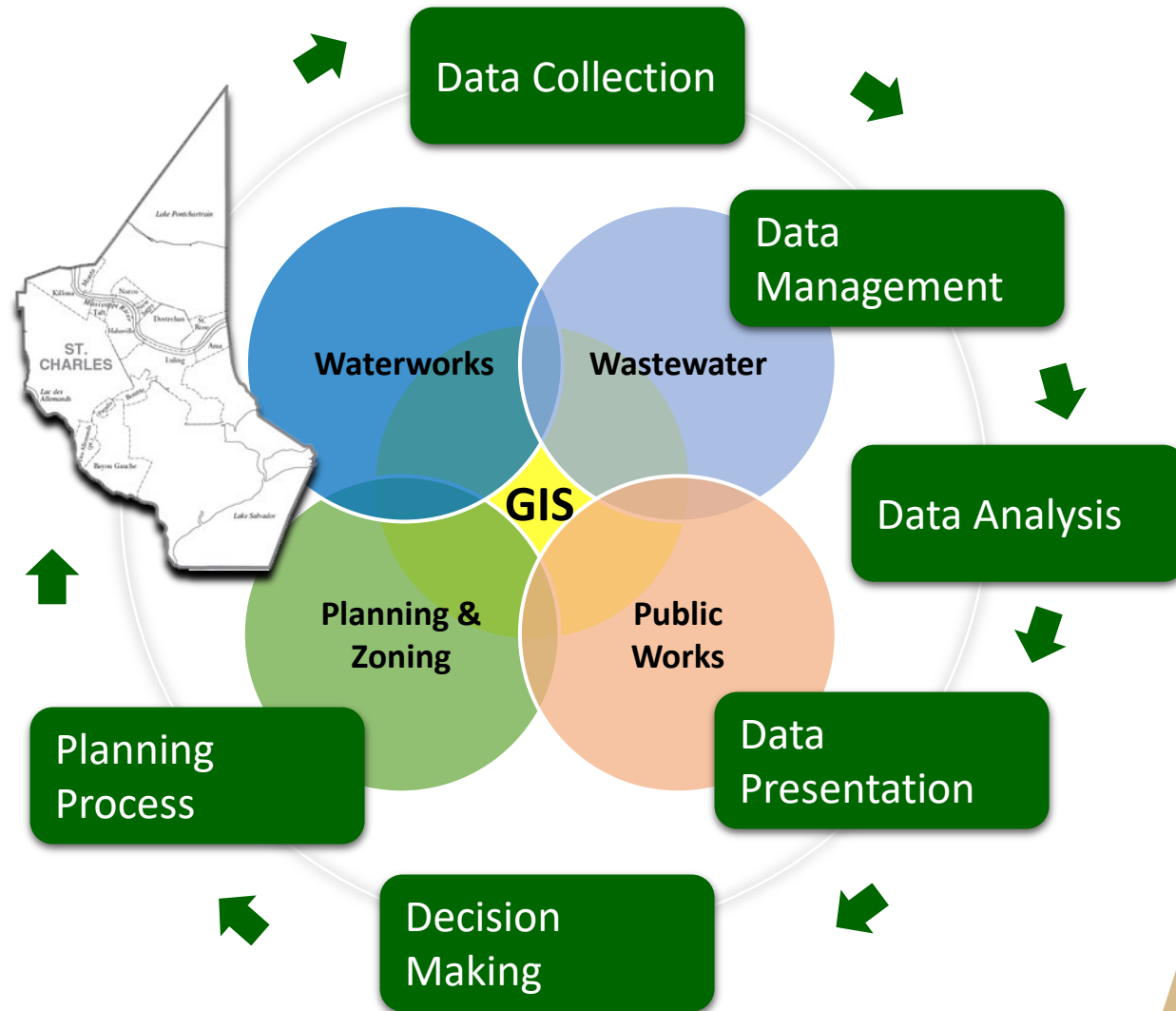
What is GIS?



What is GIS? Cont.



GIS Support in the Parish



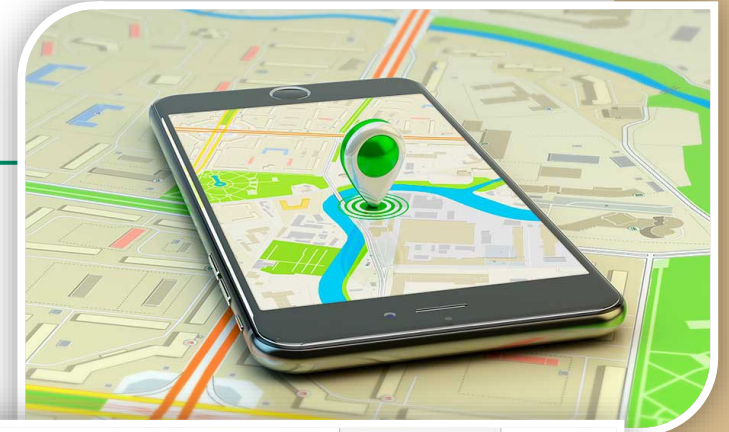
Projects 2023

- Complete overhaul of Enterprise GIS System
- Migration of GIS to new Data Center
- Began updating Drainage GIS database



Projects 2024

- Installation of GIS System Monitoring
- Create GIS System Dashboards
- Staff Guage install & verification
- Continue updating drainage database



Questions & Comments

Thank You!

Luis Martinez

Geographic Information Systems

lmartinez@stcharlesgov.net

Phone: (504) 235 - 1902

