

Ord.

2004-0100

INTRODUCED BY: ALBERT D. LAQUE, PARISH PRESIDENT
(DEPARTMENT OF PLANNING AND ZONING)

ORDINANCE NO. 04-3-9

An ordinance to approve the resubdivision of "Parcel 2," being a portion of the Lands of the Home for the Incurables et al as per plan of Gilbert, Kelly & Coutourie, Inc. dated July 27, 2000 into Lots 12-18, Magnolia Meadows Phase 2 Subdivision located in Section 1, T14S R21E near Boutte, St. Charles Parish, La. as requested by Michael D. Bernard.

WHEREAS, the Lands of the Home for the Incurables owns "Parcel 2" being a portion of the Lands of the Home for the Incurables et al as per plan of Gilbert, Kelly & Coutourie, Inc. dated July 27, 2000, near Boutte, St. Charles Parish, La.; and,

WHEREAS, the owners wish to subdivide the identified tract into Lots 12-18, Magnolia Meadows Phase 2 Subdivision for future development; and,

WHEREAS, the subdivision and development plan meets the standards contained within the local subdivision and zoning ordinances.

THE ST. CHARLES PARISH COUNCIL HEREBY ORDAINS, that the resubdivision plan presented on a survey by Michael D. Bernard, dated November 13, 2003 for resubdivision of "Parcel 2," being a portion of the Lands of the Home for the Incurables et al as per plan of Gilbert, Kelly & Coutourie, Inc. dated July 27, 2000 into Lots 12-18, Magnolia Meadows Phase 2 Subdivision located in Section 1, T14S R21E near Boutte, St. Charles Parish, La. as requested by Michael D. Bernard is hereby approved.

The foregoing ordinance having been submitted to a vote, the vote thereon was as follows:

YEAS: MARINO, FABRE, RAMCHANDRAN, WALLS, BLACK, MINNICH

NAYS: NONE

ABSENT: FAUCHEUX, HILAIRE, DUHE

And the Ordinance was declared adopted this 22nd day of March, 2004, to become effective five (5) days after publication in the Official Journal.

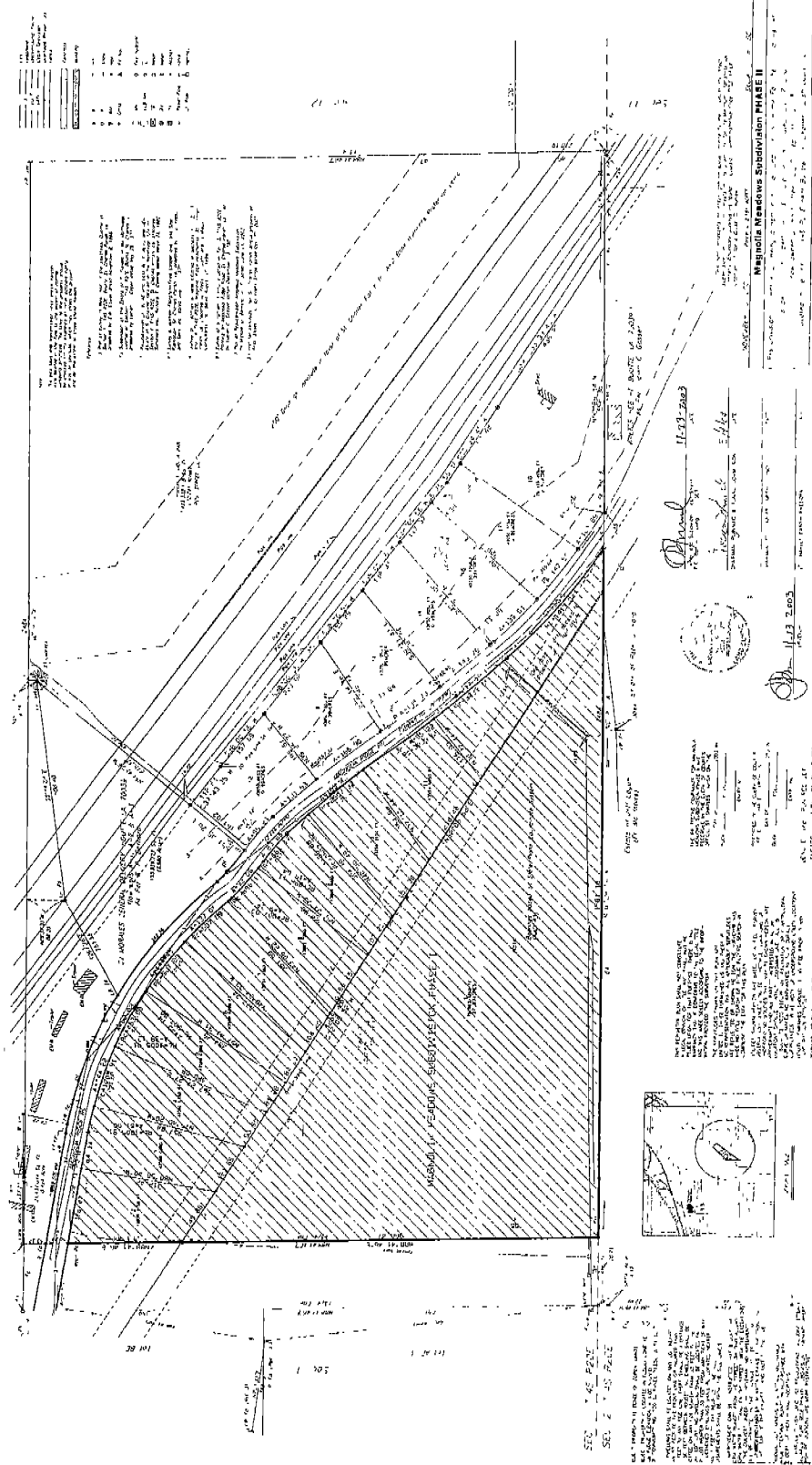
CHAIRMAN: Lance J. Mann
SECRETARY: Robert John Tucker
DLVD/PARISH PRESIDENT: March 23, 2004
APPROVED: _____ DISAPPROVED: _____

PARISH PRESIDENT: Albert D. Laque
RETD/SECRETARY: March 23, 2004
AT: 3:15 pm RECD BY: [Signature]

RECORDED IN THE ST. CHARLES PARISH
CLERK OF COURT OFFICE
ON 3/25/04
AS ENTRY NO. 292908
IN MORTGAGE/CONVEYANCE BOOK
NO. 633 FOLIO 714

SEC. 1, T4C 52E, S2
ST. CHARLES PARISH, LA

Magnolia Meadows Subdivision PHASE II

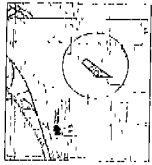


LEGEND

1	100' WIDE
2	150' WIDE
3	200' WIDE
4	250' WIDE
5	300' WIDE
6	350' WIDE
7	400' WIDE
8	450' WIDE
9	500' WIDE
10	550' WIDE
11	600' WIDE
12	650' WIDE
13	700' WIDE
14	750' WIDE
15	800' WIDE
16	850' WIDE
17	900' WIDE
18	950' WIDE
19	1000' WIDE

NOTES

1. This plan shows the subdivision of the land shown on the attached plat into lots of various sizes and shapes.
2. The lots are shown with their respective dimensions and bearings.
3. The roads are shown with their respective widths and alignments.
4. The easements are shown with their respective dimensions and locations.
5. The survey was conducted by the undersigned on the 15th day of May, 1983.
6. The survey was conducted in accordance with the rules and regulations of the State of Louisiana.
7. The survey was conducted in accordance with the rules and regulations of the State of Louisiana.
8. The survey was conducted in accordance with the rules and regulations of the State of Louisiana.
9. The survey was conducted in accordance with the rules and regulations of the State of Louisiana.
10. The survey was conducted in accordance with the rules and regulations of the State of Louisiana.
11. The survey was conducted in accordance with the rules and regulations of the State of Louisiana.
12. The survey was conducted in accordance with the rules and regulations of the State of Louisiana.
13. The survey was conducted in accordance with the rules and regulations of the State of Louisiana.
14. The survey was conducted in accordance with the rules and regulations of the State of Louisiana.
15. The survey was conducted in accordance with the rules and regulations of the State of Louisiana.
16. The survey was conducted in accordance with the rules and regulations of the State of Louisiana.
17. The survey was conducted in accordance with the rules and regulations of the State of Louisiana.
18. The survey was conducted in accordance with the rules and regulations of the State of Louisiana.
19. The survey was conducted in accordance with the rules and regulations of the State of Louisiana.
20. The survey was conducted in accordance with the rules and regulations of the State of Louisiana.



[Signature]
11-13-2003
11-13-2003
11-13-2003



NOTES

1. This plan shows the subdivision of the land shown on the attached plat into lots of various sizes and shapes.
2. The lots are shown with their respective dimensions and bearings.
3. The roads are shown with their respective widths and alignments.
4. The easements are shown with their respective dimensions and locations.
5. The survey was conducted by the undersigned on the 15th day of May, 1983.
6. The survey was conducted in accordance with the rules and regulations of the State of Louisiana.
7. The survey was conducted in accordance with the rules and regulations of the State of Louisiana.
8. The survey was conducted in accordance with the rules and regulations of the State of Louisiana.
9. The survey was conducted in accordance with the rules and regulations of the State of Louisiana.
10. The survey was conducted in accordance with the rules and regulations of the State of Louisiana.
11. The survey was conducted in accordance with the rules and regulations of the State of Louisiana.
12. The survey was conducted in accordance with the rules and regulations of the State of Louisiana.
13. The survey was conducted in accordance with the rules and regulations of the State of Louisiana.
14. The survey was conducted in accordance with the rules and regulations of the State of Louisiana.
15. The survey was conducted in accordance with the rules and regulations of the State of Louisiana.
16. The survey was conducted in accordance with the rules and regulations of the State of Louisiana.
17. The survey was conducted in accordance with the rules and regulations of the State of Louisiana.
18. The survey was conducted in accordance with the rules and regulations of the State of Louisiana.
19. The survey was conducted in accordance with the rules and regulations of the State of Louisiana.
20. The survey was conducted in accordance with the rules and regulations of the State of Louisiana.

Magnolia Meadows Subdivision PHASE II

Scale: 1" = 100'

11-13-2003

11-13-2003

11-13-2003

11-13-2003

11-13-2003

11-13-2003

11-13-2003

11-13-2003

11-13-2003

11-13-2003

11-13-2003

11-13-2003