



WELCOME

 **Port Of  
South Louisiana**  
TRANSPORTATION CENTER OF THE AMERICAS

# Board of Commissioners



**JOSEPH M. SCONTRINO III**  
Executive VP



**D. PAUL ROBICHAUX**  
President



**STANLEY BAZILE**  
Secretary



**P. JOEY MURRAY III**  
Vice President

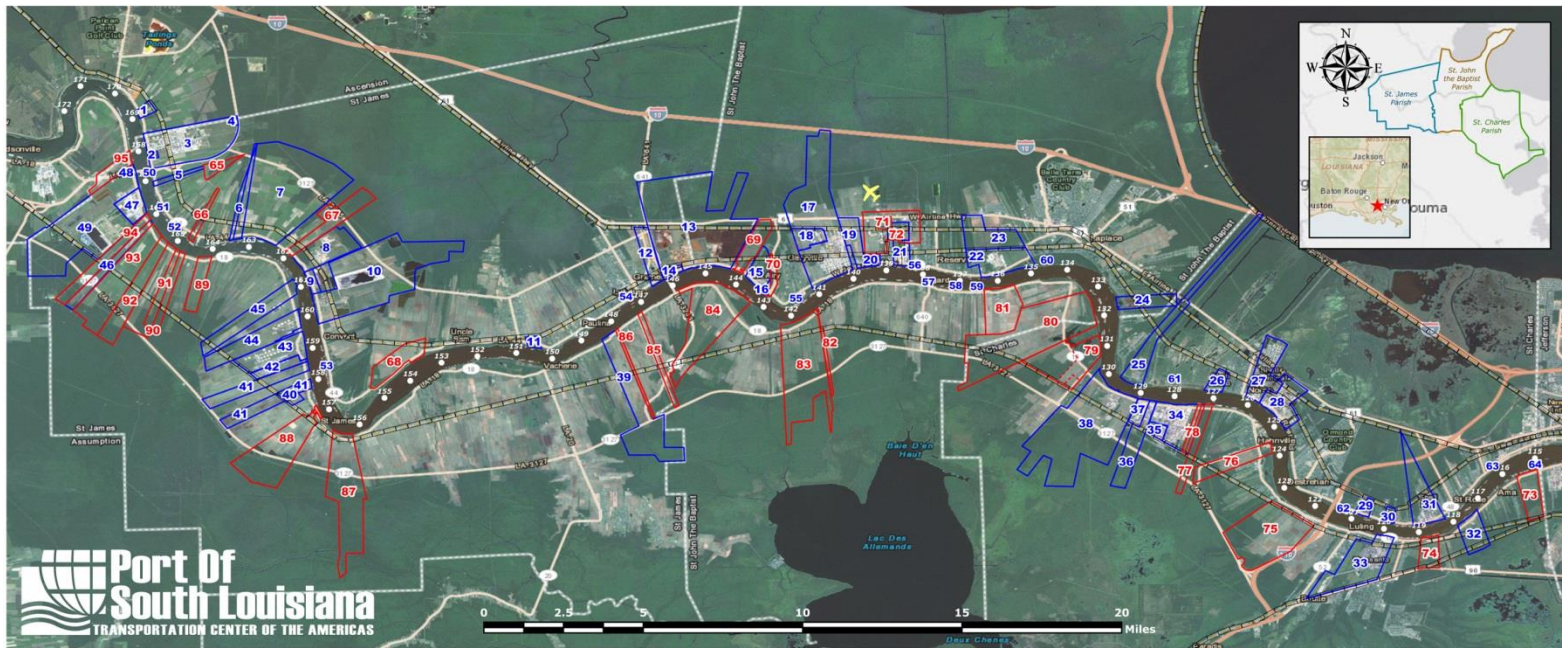


**LOUIS A. JOSEPH**  
Treasurer



**ROBERT ROUSSEL**  
Vice President

# JURISDICTION



**Port Of South Louisiana**  
TRANSPORTATION CENTER OF THE AMERICAS

## EXISTING INDUSTRY

1	Dupont / Dow	17	Marathon Petroleum Corporation	33	Monsanto	49	Mosaic Phosphate
2	LaFarge Corporation	18	Pinnacle Polymers	34	Dow - St. Charles	50	St. James Stevedoring Sunshine Midstream Buoy
3	Motiva Enterprises - Convent	19	Cargill Terre Haute Elevator / Bulk Liquid	35	Galata Chemicals	51	Sunshine Anchorage
4	Air Products & Chemicals	20	ADM - Reserve	36	Occidental Chemical	52	St. James Stevedoring Midstream Buoy
5	Yara North America	21	Globalplex Intermodal Terminal	37	Mosaic	53	Ryan Walsh Stevedoring Midstream Buoy
6	Zen-Noh Grain	22	Dupont Performance Elastomers	38	Entergy / Waterford 1, 2, 3	54	Grandview Anchorage
7	Nucor Steel Louisiana, LLC	23	El Dupont	39	Petroplex International, LLC	55	St. John Fleet Midstream Buoy
8	Occidental Chemical	24	Arcelor Mittal	40	Andino Energy Enterprises, LLC	56	Reserve Midstream Buoy
9	Convent Marine	25	Entergy / Little Gypsy	41	Plains All American	57	Reserve Anchorage
10	Mosaic - Uncle Sam	26	Momentive	42	Locap, Inc.	58	Capital Marine Tigerville Midstream Buoy
11	ADM - Paulina	27	Motiva Enterprises - Norco	43	Shell Pipeline	59	Gold Mine Fleet Midstream Buoy
12	Louisiana Sugar Refinery	28	Valero - St. Charles	44	NuStar	60	CGB Midstream Buoy
13	Noranda Aluminum	29	ADM - Destrehan	45	Ergon / Sun Fuel Midstream	61	Bonne Carré Anchorage
14	Rain Oil	30	Bunge North American	46	INCA Refining	62	ADM Midstream Buoy
15	Nalco	31	International Matex Tank Terminals (IMTT)	47	American Styrenics	63	Ama Anchorage
16	Evonik	32	ADM - Ama	48	Valero Asphalt	64	Kenner Bend Anchorage

## HEAVY INDUSTRIAL SITES

65	Ancient Domain - 225 acres	81	Goldmine - 915 acres; 4,780' rf
66	Balot & Whitehall - 240 acres; 980' rf	82	Whitrose - 300 acres; 854' rf
67	Shady Grove - 231 acres; 6,000' rf	83	Willow Bend - 2,200 acres; 6,000' rf
68	Welham - 611 acres; 2,000' rf	84	Robert Brothers Farm - 1,582 acres; 8,448' rf
69	Safeland Storage, LLC - 425 acres; 2,133' rf	85	Goodwill Plantation - 500 acres; 750' rf
70	Hope Plantation - 283 acres; 1,500' rf	86	Succeed - 100 acres; 384' rf
71	Guidry Property - 84 acres	87	Rich Bend Plantation - 500 acres; 1,300' rf
72	Airline Industrial Park - 400 acres	88	Zeringue / St. Emma - 1,464 acres; 2,254' rf
73	Bunge - 378 acres; 2,460' rf	89	Savannah - 381 acres; 1,954' rf
74	Davis Levert - 100 acres; 2,640' rf	90	Minnie & St. Louis (ARIONIA) - 900 acres; 2,482' rf
75	Esperanza Business Park - 680 acres	91	St. Alice - 321 acres; 670' rf
76	Home Place - 375 acres	92	Winchester / Whitney - 785 acres; 1,250' rf
77	Pelican-Occidental - 489 acres; 1,373' rf	93	Winchester / Acadia (NOT FOR SALE) - 1,490 acres; 2,403' rf
78	SoLaPort - 99 acres; 263' rf	94	Elna - 406 acres; 520' rf
79	St. Charles Riverpark - 1,200 acres; 3,500' rf	95	Dunhill - 66 acres; 1,600' rf
80	Glendale Hymelia - 2,500 acres; 5,808' rf		

# Petrochemical, Chemical & Fertilizer Facilities

Air Products

Dow St. Charles

Galata Chemicals

Nalco

American Styrenics

Evonik

Occidental Chemical

Mosaic

Rain CII

Pinnacle Polymers

Dupont

Momentive

Monsanto

# Oil and Grain Facilities

## OIL REFINERIES

Motiva - Convent

Marathon Petroleum

Motiva - Norco

Valero – St. Charles

## GRAIN ELEVATORS

Zen-Noh Grain

Cargill

Bunge North American

ADM – Paulina

ADM – Reserve

ADM – Destrehan

ADM - Ama

## TENANTS

Evonik

NATCO

Food Service

Barton Mines

Baumer

Foods



**Port Of  
South Louisiana**  
TRANSPORTATION CENTER OF THE AMERICAS



## Port of South Louisiana's GLOBALPLEX INTERMODAL TERMINAL

- 335-acre complex, which includes a 130-acre certified available site, with access to loading/unloading of commodities with three docks and warehouse storage
- Over 716,000 sq.ft. covered storage; 177,000 sq.ft. open storage
- *Stevedoring Firm: Associated Terminals*



Port of South Louisiana is ranked as the #1

**LARGEST TONNAGE PORT IN THE WESTERN HEMISPHERE!**

291 million short tons | 4,377 vessels | 57,350 barges (2014)



**Port Of  
South Louisiana**  
TRANSPORTATION CENTER OF THE AMERICAS



Port of South Louisiana is ranked as the #1

**GRAIN EXPORTER IN THE UNITED STATES!**

Seven grain elevators





Port of South Louisiana is ranked as the #1

**ENERGY TRANSFER PORT IN THE UNITED STATES!**

Four major oil refineries | Seven crude oil storage terminals





**Port Of South Louisiana**  
TRANSPORTATION CENTER OF THE AMERICAS



Port of South Louisiana is ranked as the #1

**FOREIGN TRADE ZONE (#124) IN THE U.S. FOR MERCHANDISE RECEIVED!**

12 subzones | \$75 billion received | 10,500 employed

## Largest Tonnage Port in the Western Hemisphere



OVER 291 MILLION SHORT TONS TRANSPORTED VIA, ON AVERAGE, 4,000 VESSELS AND 55,000 BARGES



VALUE:  
OVER \$57 BILLION IN EXPORTS  
OVER \$18 BILLION IN IMPORTS



OVER 40 LIQUID AND BULK TERMINALS

LARGEST GRAIN PORT IN THE U.S. (50% OF ALL THE NATION'S EXPORTS)  
*seven grain elevators*



#1 ENERGY TRANSFER PORT IN THE U.S.  
*four major oil refineries & seven crude oil storage terminals*



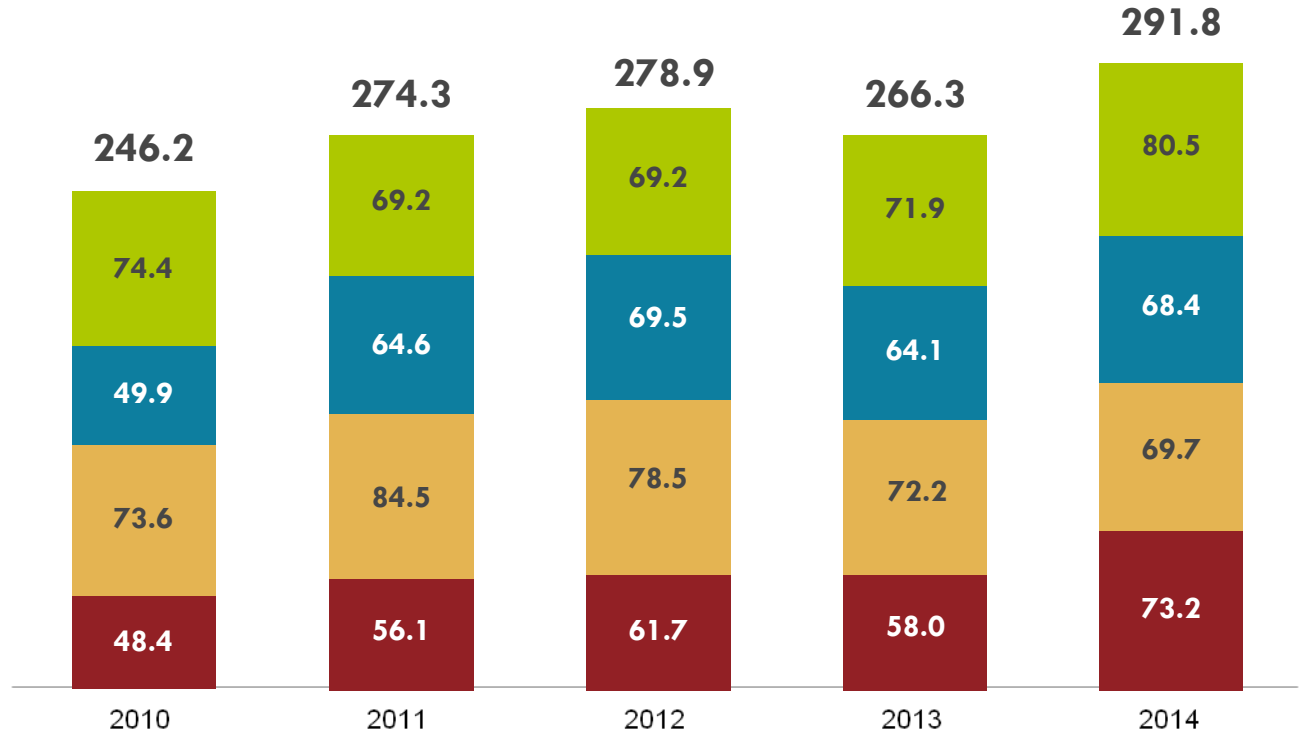
FOREIGN TRADE ZONE #124  
RANKED FIRST IN THE U.S.  
*\*Received 75 billion in merchandise*  
*\*12 subzones*



# Port Tonnage

■ EXPORTS    
 ■ IMPORTS    
 ■ DOMESTIC SHIPPED    
 ■ DOMESTIC RECEIVED

**TOTAL  
THROUGHPUT**  
*in million short tons*

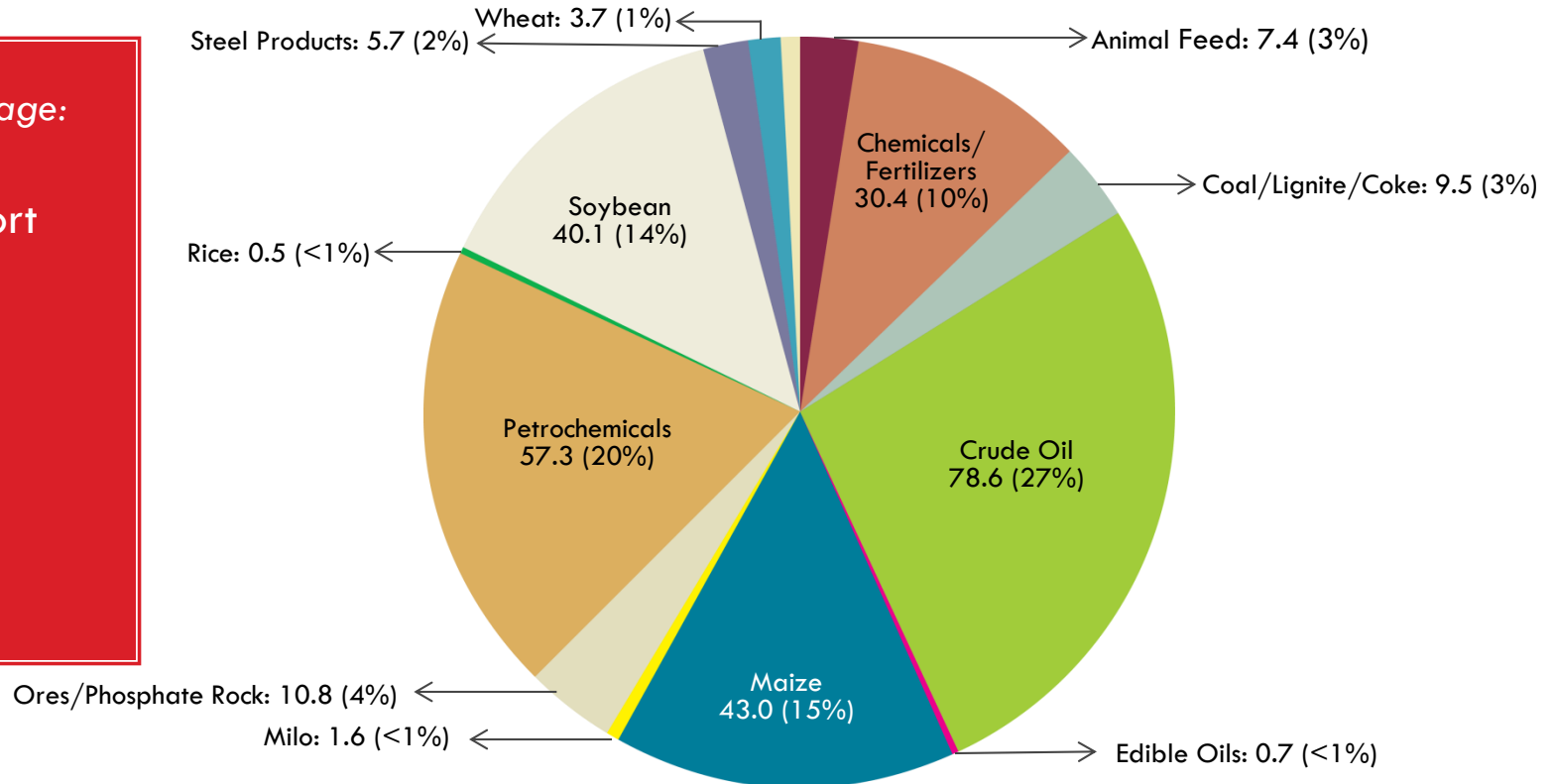


# Commodities/Port Tonnage

2014 Tonnage:  
**291.93**  
million short  
tons

# Vessels:  
**4,377**

# Barges:  
**57,350**



# Economic Impact of the Port of South Louisiana

	<i>REGIONAL</i>	<i>LOUISIANA</i>
New Business Sales	\$ 14.4 billion	\$ 19.9 billion
Earnings	\$ 1.8 billion	\$ 4.4 billion
Employment	30,180 jobs <i>(6 in 10 jobs in the River Region)</i>	83,409 <i>(1 in 25 jobs in Louisiana)</i>
<i># Jobs at Globalplex = 315</i>		
Tax Revenue	\$ 72.5 million	\$ 310.5 million
		<i>Loren C. Scott &amp; Associates, Inc., 2015</i>

INLAND  
RIVER  
SYSTEM  
Our  
Marine  
Highway

Access to over

**26 Million**

people in  
33 U.S. States



# Port Benefits



## **INDUSTRIAL REVENUE BOND FINANCING**

AUTHORITY TO ISSUE TAXABLE AND TAX-EXEMPT BONDS TO ASSIST INDUSTRIAL FACILITIES LOCATING WITHIN OUR PORT DISTRICT



## **FOREIGN TRADE ZONE (FTZ) #124**

OPERATOR OF ONE OF THE MOST ACTIVE TRADE ZONES IN AMERICA



## **PROFESSIONAL LOCATION ASSISTANCE**

AVAILABLE TO COMPANIES PLANNING TO LOCATE TO THE RIVER REGION. INCLUDES THE USE OF IN-HOUSE GIS



## **MARITIME SECURITY AND FIRE PROTECTION**

ROUND-THE-CLOCK DOCK SECURITY AND EMERGENCY RESPONSE DIVISION, IN COOPERATION WITH LOCAL SHERIFF'S DEPARTMENTS, WITH AN ARRAY OF FIREFIGHTING AND SAFETY EQUIPMENT





2,000 sq.ft. hardened concrete and steel building with impact resistant glass, built to withstand 150 mile-per-hour winds



Equipped with the latest in communications and surveillance equipment, linked to MSOCs at four other deep water ports on the lower Mississippi River



Linked to federal, state, and local emergency response agencies



## Marine Security Operations Center (MSOC)

*Command and control center to manage emergencies within the Port's jurisdiction*

# Doing Business in Louisiana



#2 IN THE NATION FOR INCENTIVE PROGRAMS AND RENEWED CONSIDERATION POST-RECESSION



#3 IN THE NATION FOR OVERALL BUSINESS ENVIRONMENT AND FAVORABLE REGULATORY ENVIRONMENT



#4 IN THE NATION FOR SPEED OF PERMITTING, MOST COOPERATIVE STATE GOVERNMENT AND OVERALL COST OF DOING BUSINESS

2015

INTERNATIONAL ECONOMIC  
DEVELOPMENT COUNCIL  
EXCELLENCE  
IN ECONOMIC DEVELOPMENT  
AWARDS

BRONZE

# Economic Development

	<i>Parish</i>	<i>Capital Investment</i>	<i># Direct Jobs Created</i>	<i>Average Salary</i>
<b>Nucor Steel – U.S.</b>	St. James	\$ 3.4 billion	1,250	\$ 75K
<b>Yuhuang Chemical – China (methanol)</b>	St. James	\$ 1.85 billion	400	\$ 85K
<b>EuroChem – Russia (fertilizer)</b>	St. John	\$ 1.5 billion	200	\$ 58K
<b>South Louisiana Methanol – U.S./New Zealand</b>	St. James	\$ 1.3 billion	63	\$ 66K
<b>AM Agrigen Industries – India (fertilizer)</b>	St. Charles	\$ 1.25 billion	150	\$ 55K
<b>Monsanto Expansion – U.S.</b>	St. Charles	\$ 1.0 billion	95	\$ 76K

# Economic Development

	<i>Parish</i>	<i>Capital Investment</i>	<i># Direct Jobs Created</i>	<i>Average Salary</i>
<b>Entergy   Little Gypsy Expansion – U.S.</b>	St. Charles	\$ 1.0 billion	15 – 20	
<b>Pin Oak Terminals – U.S. (crude oil)</b>	St. John	\$ 750 million	80 - 100	\$ 63K
<b>NuStar – U.S. (crude oil tank storage)</b>	St. James	\$ 365 million	32	\$98K
<b>Syngas Energy - Malaysia (methanol)</b>	St. James	\$ 360 million	86	\$ 78K
<b>Petroplex International – U.S. (crude oil)</b>	St. James	\$ 300 million	60	\$ 65K
<b>Marubeni Corporationn (Gavilon Trading - Japan (grain))</b>	St. James	\$ 250 million	100	

# Economic Development

	<i>Parish</i>	<i>Capital Investment</i>	<i># Direct Jobs Created</i>	<i>Average Salary</i>
<b>First Bauxite Corporation - Canada</b> <i>(proppants)</i>	St. John	\$ 200 million	100	\$ 70K
<b>Bunge North America expansion – U.S.</b> <i>(grain)</i>	St. Charles	\$ 140 million		
<b>Momentive Specialty Chemicals – U.S.</b>	St. Charles	\$ 38 million	8	\$ 82K
<b>Kongsberg Maritime – Norway</b> <i>(office &amp; training)</i>	St. Charles	\$ 15 million	200	\$ 100K
<b>Denka Performance Elastomers – Japan</b> <i>Corporate Headquarters</i>	St. John		16 (corporate)	\$ 80K
<b>Formosa Petrochemical Corporation – Taiwan</b> <i>(industrial complex feasibility study)</i>	<i>St. James</i>	<i>\$ 9.4 billion</i>	<i>1,200</i>	<i>\$ 84.5K</i>

# Port of South Louisiana Container Terminal Project

## *Approximate Shipping Cost Comparison*

ORIGIN: Shanghai		DESTINATION: Chicago	
<u>PORT</u>	<u>APPROXIMATE COST PER TEU</u>	<u>RAIL LINE</u>	
Port of South Louisiana	\$ 688.00	Canadian National	
Charleston	\$ 1,400.00	CSX Transportation	
Oakland	\$ 1,551.00	Union Pacific	
Seattle	\$ 969.00	BNSF Railway	



## Port of South Louisiana Executive Regional Airport

- 5,100' x 75' RUNWAY
- VIDEO SURVEILLANCE
- FAA AWOS
- SECURED AIRCRAFT PARKING

# PSL Consultants

## **AUX INITIATIVES**

**GENERAL ROBERT CREAR**

## **McALLISTER & QUINN, LLC**

**MELISSA HAMPE**

## **ADAMS & REESE**

**JEFF BROOKS**

## **TJC GROUP - TIM JOHNSON**

**PUBLIC AFFAIRS/COMMUNITY OUTREACH**

**GOVERNMENTAL RELATIONS**

**WORKFORCE DEVELOPMENT**





Port of South Louisiana is ranked as the #1

LARGEST TONNAGE PORT IN THE WESTERN HEMISPHERE!



Port of South Louisiana is ranked as the #1

GRAIN EXPORTER IN THE UNITED STATES!





Port of South Louisiana is ranked as the #1

**ENERGY TRANSFER PORT IN THE UNITED STATES!**



Port of South Louisiana is ranked as the #1

**FOREIGN TRADE ZONE (#124) IN THE U.S. FOR MERCHANDISE RECEIVED!**



...IMPORTANT TO OUR COMMUNITY

...IMPORTANT TO OUR STATE

...IMPORTANT TO OUR COUNTRY





...IMPORTANT  
TO THE WORLD!

 **Port Of  
South Louisiana**  
TRANSPORTATION CENTER OF THE AMERICAS



SUPPORT  
YOUR  
PORT!



THANK YOU