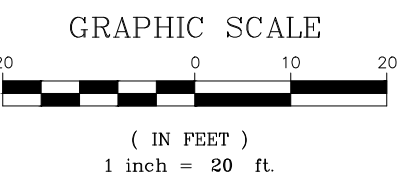
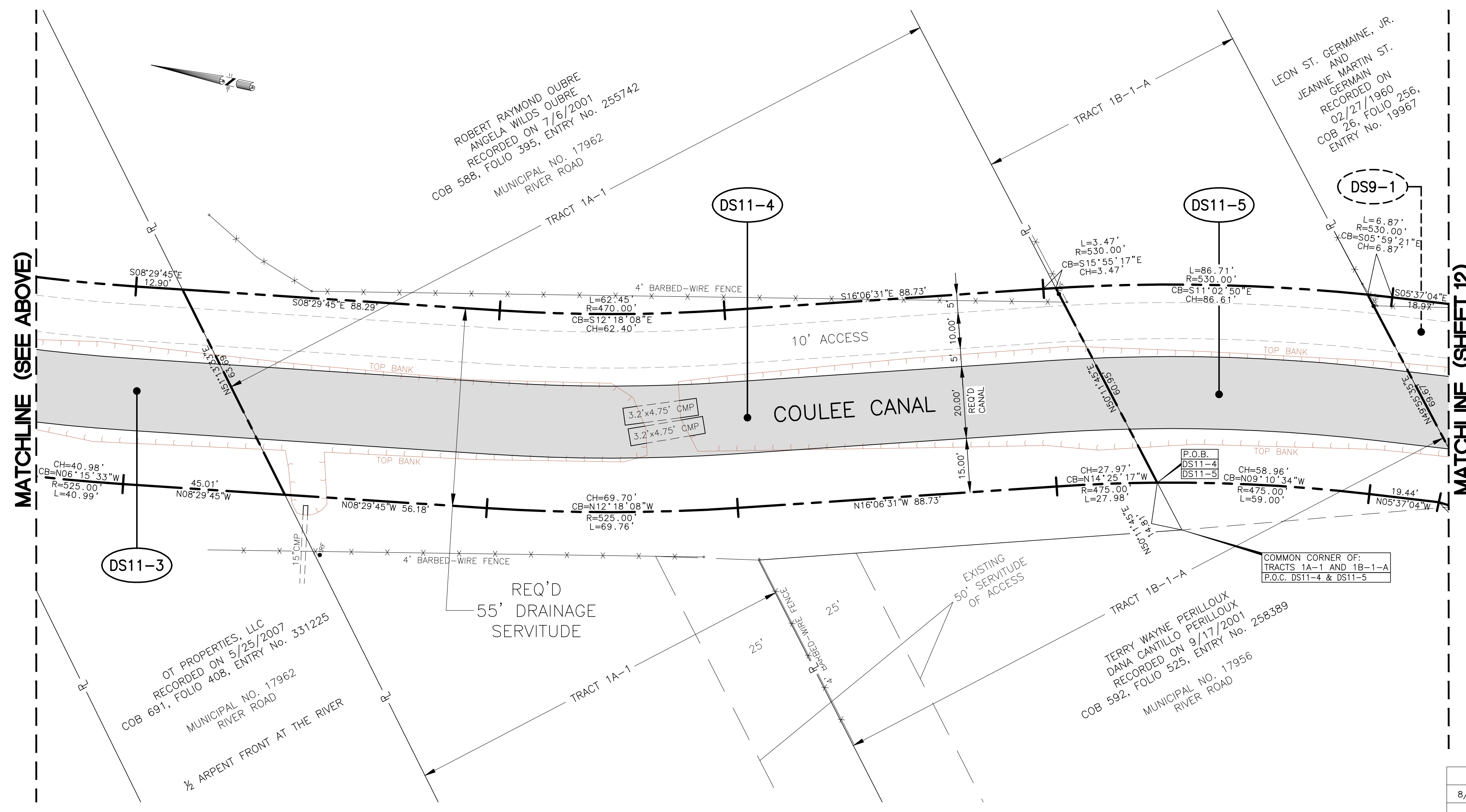


COUNTRY COTTAGE ESTATES

SW CORNER OF PROPERTY OF:
GENE, ALCEE, SHERYL & GARY
DUPLESSIS
P.O.C. DS11-1, DS11-2 & DS11-3

ROAD (LOUISIANA HIGHWAY NO. 628)
RIVER MISSISSIPPI RIVER
FLOW



DRAINAGE SERVITUDES
REQUIRED DRAINAGE SERVITUDES FOR
A PORTION OF COULEE CANAL
SECTIONS 6, 7, 17 & 42, T12S-R7E
TOWN OF MONTZ
ST. CHARLES PARISH, LA.



3445 N. CAUSEWAY BLVD., STE. 401, METAIRIE, LA. 70002 (504)838-6009

8/25/2015	REVISED DS4-1, DS5-1, DS11-2 and DS12-1	E.W.P.	SCALE: 1" = 20'	DRAWN BY: EWP
DATE	REVISION RECORD	DRAWN BY	DATE: 4/21/2015	CHECKED BY: CAM
			JOB NO. 413-2060106.004	SHEET NO. 11 OF 15

G:\DWG\5413\00512060106.004_Coulee_Canal_Improvements\DWG - Revised 8-25-2015\Coulee Canal Reqd Drainage Servitudes with Geometry and Topo Survey - Revised 8-25-15.dwg Aug 26, 2015 - 8:35am