



VICINITY MAP
SCALE: 1" = 2000'

Approved/Disapproved

St. Charles Parish Planning Commission Chairman

DATE

Approved/Disapproved

St. Charles Parish President

DATE

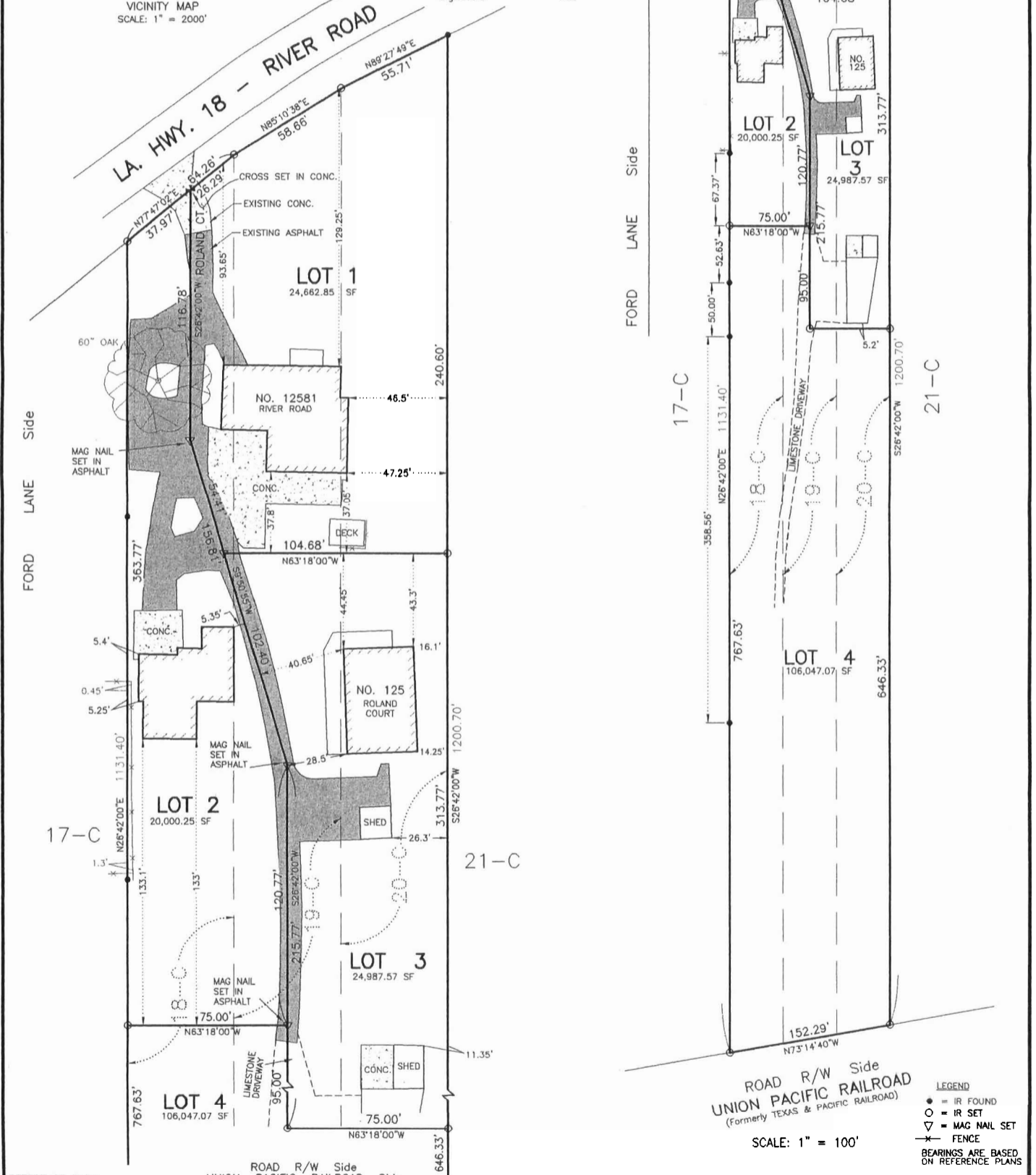
Recorded in The Clerk of Court's office

St. Charles Parish on the ___ day of

_____, in Book _____

Folio _____, Entry # _____

Signature _____ Title _____



REFERENCE PLAN:
1. SUB-DIVISION OF A PORTION OF ELLINGTON PLANTATION BY E. M. COLLIER, DATED AUG., 1947
2. SURVEY OF LOTS 18C, 19C & 20C OF ELLINGTON PLANTATION BY E. M. COLLIER, DATED FEB. 1, 1961

ROAD R/W Side UNION PACIFIC RAILROAD Side (Formerly TEXAS & PACIFIC RAILROAD)

DETAIL SCALE: 1" = 50'

RESUBDIVISION OF LOTS 18-C, 19-C & 20-C BEING A PORTION OF ELLINGTON PLANTATION INTO LOTS 1, 2, 3 & 4 IN SECTIONS 17, 18, 62 & 63, T13S - R21E ST. CHARLES PARISH, LOUISIANA

SCALE: AS SHOWN OCTOBER 20, 2011

CERTIFIED TO LINGLE MONGRUE

ROAD R/W Side UNION PACIFIC RAILROAD (Formerly TEXAS & PACIFIC RAILROAD)

LEGEND
● = IR FOUND
○ = IR SET
▽ = MAG NAIL SET
— = FENCE
BEARINGS ARE BASED ON REFERENCE PLANS

I certify that this plat represents an actual ground survey performed under my supervision and is in accordance with the Louisiana standards of practice for a Class C survey.

Lucien C. Gassen

LUCIEN C. GASSEN, PLS
Registration No. 353
LULING, LOUISIANA 70070