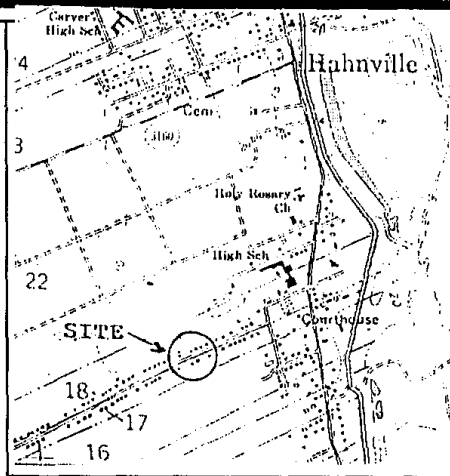


APPROVALS

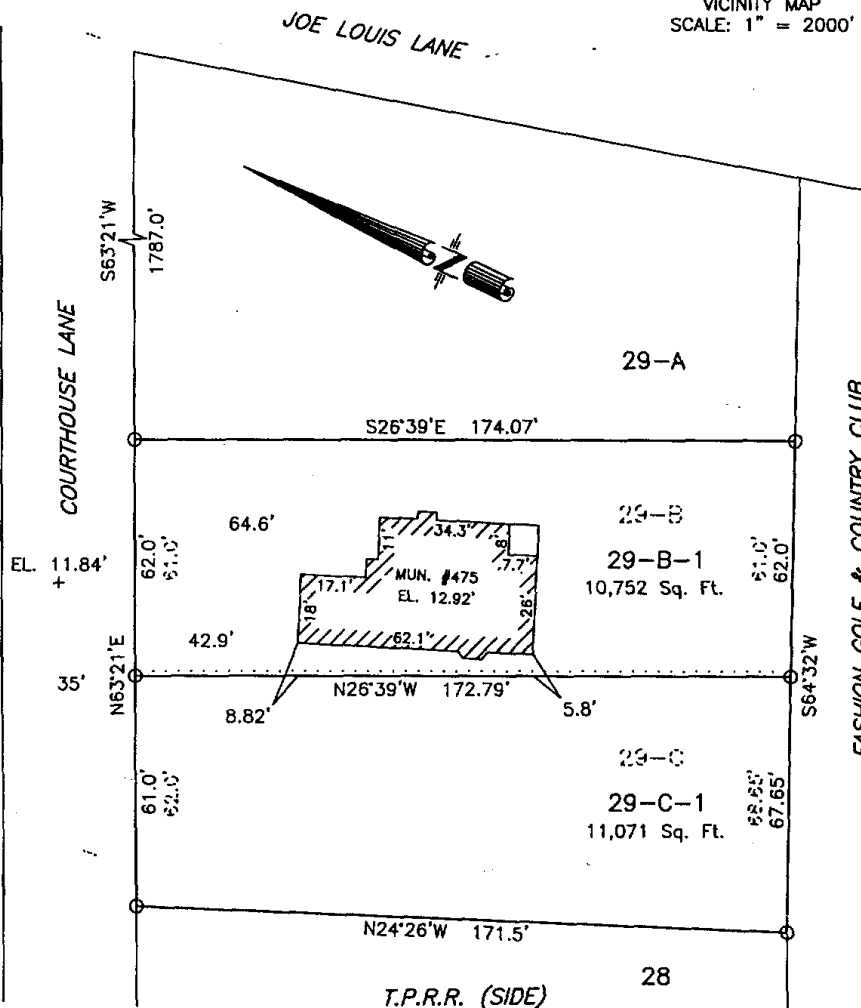
ST. CHARLES PARISH PRESIDENT

11/06/2002  
DATE

11/7/2002  
DATE



VICINITY MAP  
SCALE: 1" = 2000'



A circular professional seal for a land surveyor. The outer ring contains the text "STATE OF LOUISIANA" at the top and "LAND SURVEYOR" at the bottom, separated by two five-pointed stars. In the center of the seal is a small emblem of the state of Louisiana, featuring a pelican feeding its young in a nest. Below the emblem, the text "R. P. BERNARD" is printed in a bold, sans-serif font. Underneath the name, "REG. No. 226" is printed in a similar font. At the bottom of the central area, the word "REGISTERED" is printed in a bold, sans-serif font.

APB  
SURVEYOR

R.P. BERNARD, PLS.  
LA. REG. #226  
P.O. BOX 402, BOUTTE, LA.

Date:	10/17/02
Scale:	1" = 40'
File#:	02K062

THIS SURVEY WAS PERFORMED BY MYSELF OR UNDER MY DIRECT SUPERVISION AND CONTROL. SURVEYED IN ACCORDANCE WITH THE LOUISIANA "MINIMUM STANDARDS FOR PROPERTY BOUNDARY SURVEYS" FOR A CLASS "D" SURVEY.