

# Greater New Orleans Hurricane & Storm Damage Risk Reduction System

## ***Western Tie-In Construction Update***

***St. Charles Parish***

***Council Chambers***

***November 7, 2011***



US Army Corps of Engineers  
**BUILDING STRONG®**





# Western Tie-In



Railroad Closure Structure/  
Earthen Ramp at LA 18  
WBV 77

Railroad Closure Structure  
WBV 75

WBV 71

Floodwall/US 90  
Elevated Crossing  
WBV 73

US 90

East/West Levee

WBV 72

OUTER CATAOUCHE CANAL  
LEVEE

Dewatering  
Cells  
WBV 70

DAVIS  
POND

Closure Gate WBV 74  
LEVEE

HWY 90  
Pump Station  
Relocation  
WBV 76

BAYOU  
VERRET



# Completed Contracts

## Western Tie-In

- **WBV-70 Dewatering Cells**
  - Construction completed: July 2010
- **WBV-71 North South Levee**
  - Construction completed: November 2010



The Western Tie-In project is capable of defending against a 100-year storm surge event with interim measures.



# Contracts Under Construction

## Western Tie-In

- **WBV-72 Dewatering Cells**
  - Percent complete: 93%
  - Expected completion: November 2011
- **WBV-73 Highway Crossing**
  - Percent complete: 28%
  - Expected completion: July 2012
- **WBV-74 Closure Structure**
  - Percent complete: 71%
  - Expected completion: January 2012
- **WBV-75 Railroad Crossing**
  - Percent complete: 53%
  - Expected completion: December 2011
- **WBV-76 Hwy. 90 Pumps Station Relocation**
  - Percent complete: 41%
  - Expected completion: Mar 2012
- **WBV-77 UP Railroad Swing Gates and Ramp Crossing**
  - Percent complete: 0%
  - Expected completion: May 2012



WBV - 72



WBV - 74



WBV - 73



**BUILDING STRONG®**

# ***Anticipated Impacts***

- Increased noise
- Increased traffic
- Restricted water access for Sellars Canal
- Detours
- Sand and dust
- Wetland impacts



# ***WBV-73: Highway Crossing***

- Awarded on July 7, 2010 to James Construction Group
- Floodwall built to elevation 15.5 ft.
- Bridge over floodwall will maintain traffic patterns during evacuation
- Traffic will detour from Hwy. 90 for a significant portion of construction
- Expected to see traffic to be detoured around March 2012



Western Tie-in US Hwy 90 Crossing - January 2011





# *Hwy 90 Detour*

←  
west bound traffic

Bridge

Bridge

→  
east bound traffic



**BUILDING STRONG®**

Not to scale

# ***WBV-77: UP Railroad Swing Gates and Ramp Crossing***

- Award Date: May 22, 2011
- Contract features:
  - 1 swing gate at railroad
  - 1 ramp at Hwy 18
- Summer construction will reduce impacts to school children
- Allows for the two lane bypass road
- Expected to see traffic to be detoured around January 2012

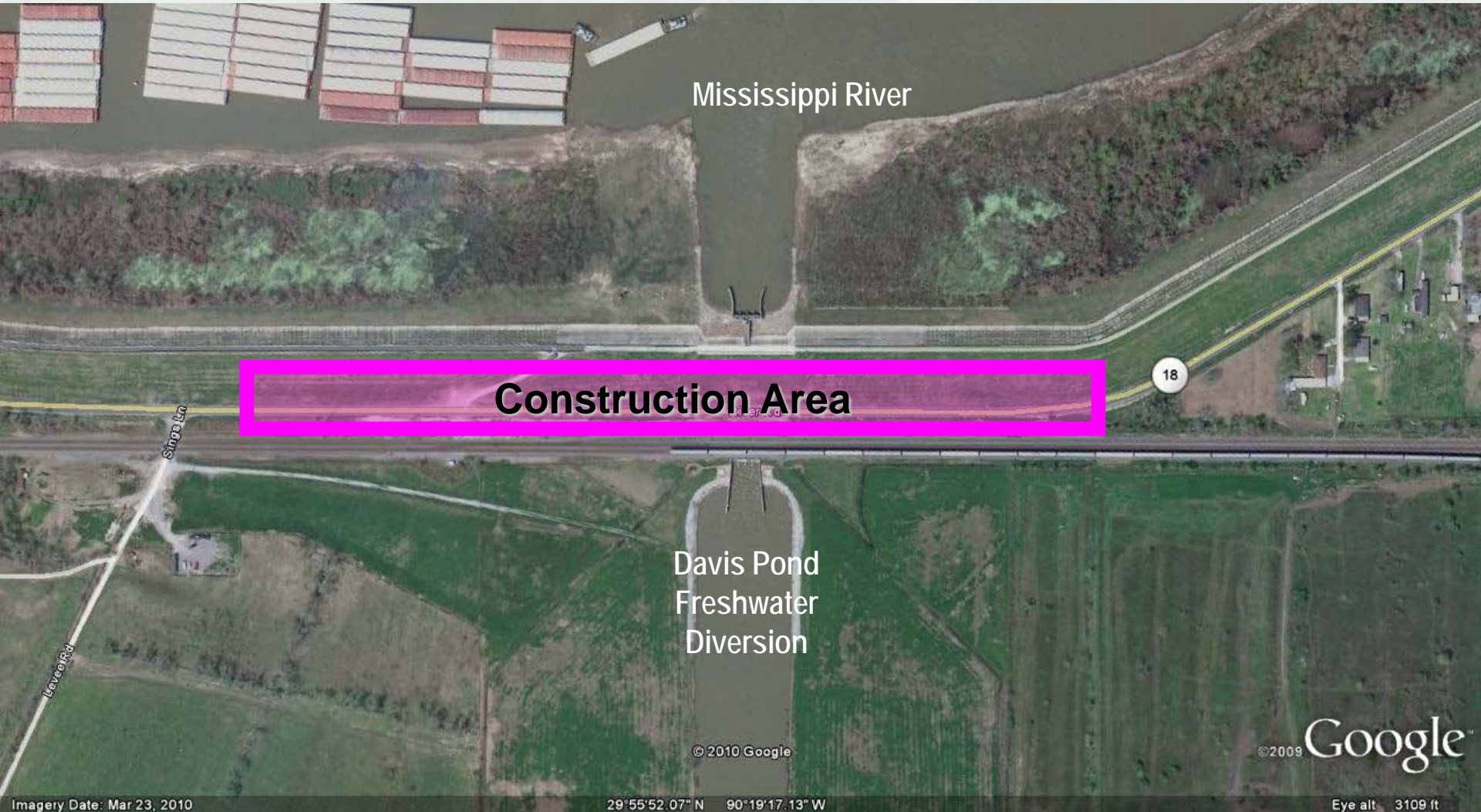


Project site for Union Pacific Railroad floodgate, T-wall monoliths and LA Hwy 18 roadway ramp



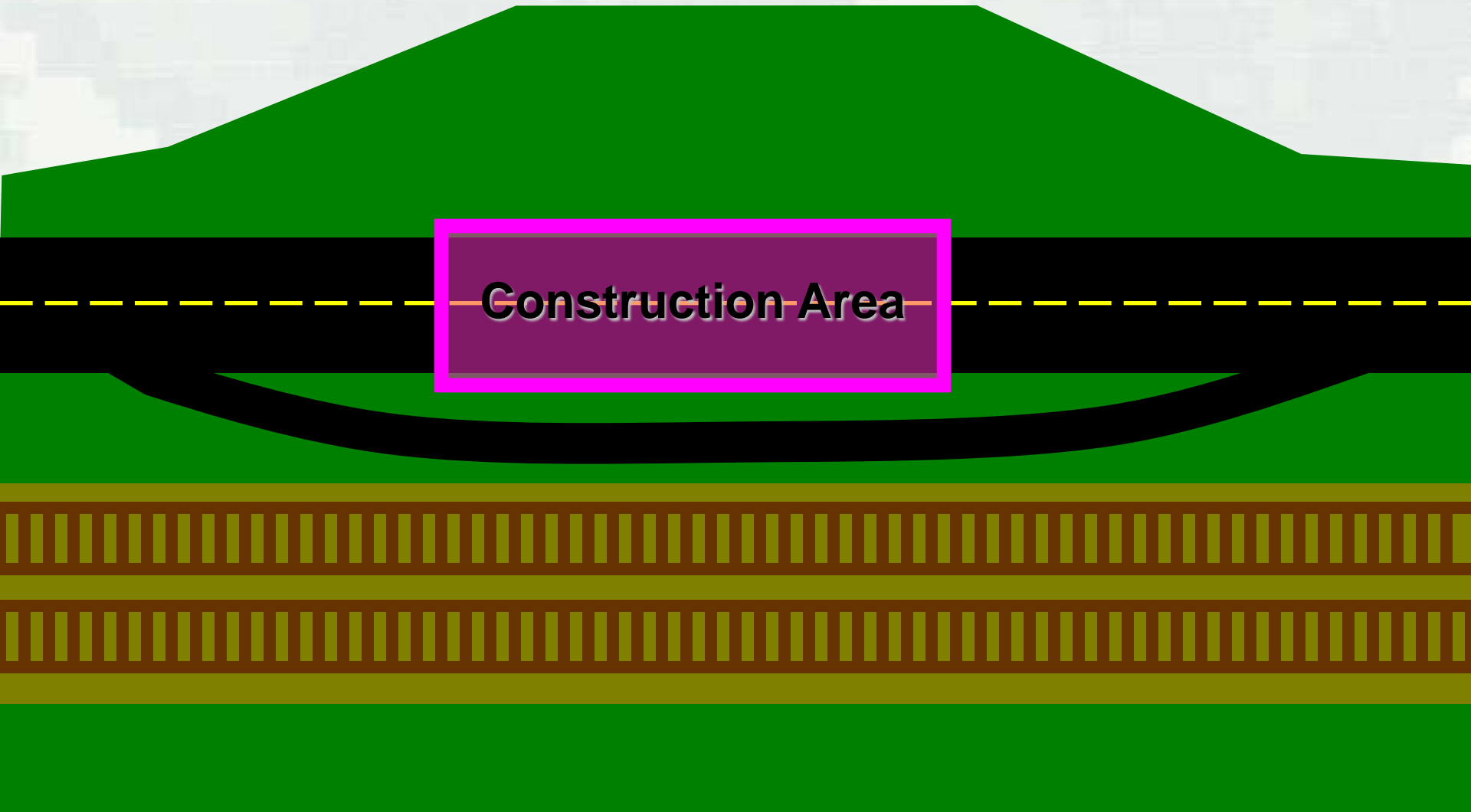


# ***Construction Area at Hwy 18***



# ***LA-18 Bypass Road***

*Single Lane Access South of LA-18*



# Upcoming Public Meetings

## **Wednesday, Dec. 7, 2011**

WBV Mitigation IER public meeting –  
Westwego Westwego Ernest Tassin Senior  
Center  
701 4th St.  
Westwego, LA 70094  
Open house 6 p.m.  
Presentation 6:30 p.m.

## **Thursday, Dec. 8, 2011**

LPV Mitigation IER public meeting –  
New Orleans Church at New Orleans  
11700 Chef Menteur Hwy.  
New Orleans, LA 70129  
Expected Attendance 40  
Open house 6 p.m.  
Presentation 6:30 p.m.

## **Monday, Dec. 12, 2011**

Mississippi River Levees - IER 33  
Supplemental  
Belle Chasse Auditorium  
8398 Highway 23, Belle Chasse, LA 70037  
Expected Attendance 100  
Open House 6:00 p.m.  
Presentation 6:30 p.m.

## **Wednesday, Dec. 14, 2011**

Larose to Golden Meadow Scoping Meeting  
Veterans of Foreign Wars Hall #8538  
2322 VFW Ave  
Larose, LA 70373  
Expected Attendance 30  
Open House 6:00 p.m.  
Presentation 6:30 p.m.





# ***Discussion***



# ***West Bank Hurricane & Storm Damage Risk Reduction System***

