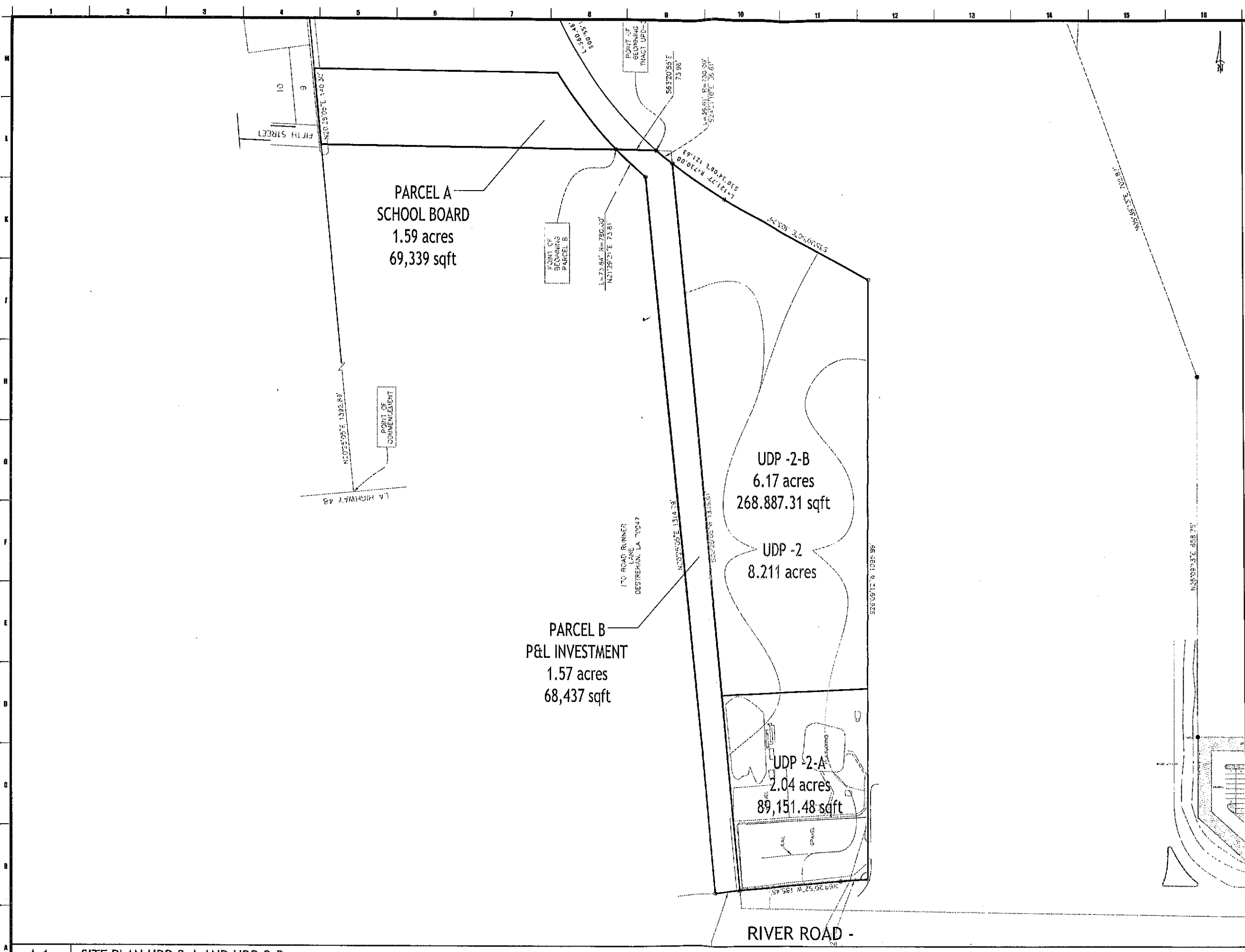


COPYRIGHT AND ALL RIGHTS RESERVED BY MURRAY ARCHITECTS, INC. THIS DRAWING IS THE PROPERTY OF MURRAY ARCHITECTS, INC. AND IS NOT TO BE REPRODUCED, COPIED, OR TRANSMITTED IN ANY FORM OR BY ANY MEANS, ELECTRONIC OR MECHANICAL, INCLUDING PHOTOCOPYING, RECORDING, OR BY ANY INFORMATION STORAGE AND RETRIEVAL SYSTEM, WITHOUT THE WRITTEN PERMISSION OF MURRAY ARCHITECTS, INC. ALL RIGHTS ARE RESERVED TO MURRAY ARCHITECTS, INC.






 1700 River Road
 Metairie, LA 70002
 Tel: (504) 885-7225
 Fax: (504) 721-6142

no.	revisions	date
1		
2		
3		
4		
5		
6		

Destrehan Development
 XXXX
 Overall site Map

 project number 1606 date 12.12.2016 phase DD	drawing number A.0.1
--	--------------------------------

A-1 SITE PLAN UDP-2-A AND UDP-2-B

n.t.s.