

FINAL PLAN
DESTREHAN PLANTATION ESTATES
SURVEY PLAT AND RESUBDIVISION OF TRACT 4-II-A-24
INTO LOTS 1 THROUGH 30
OF PLANTATION BUSINESS CAMPUIS
SITUATED IN SECTION 4, T-13-S, R-8-E
DESTREHAN, ST. CHARLES PARISH, LOUISIANA
A PORTION OF UNDESIGNATED TRACT C OF PLANTATION BUSINESS CAMPUIS & A PORTION OF WHIRLPOOL CORP PROPERTY 1-I

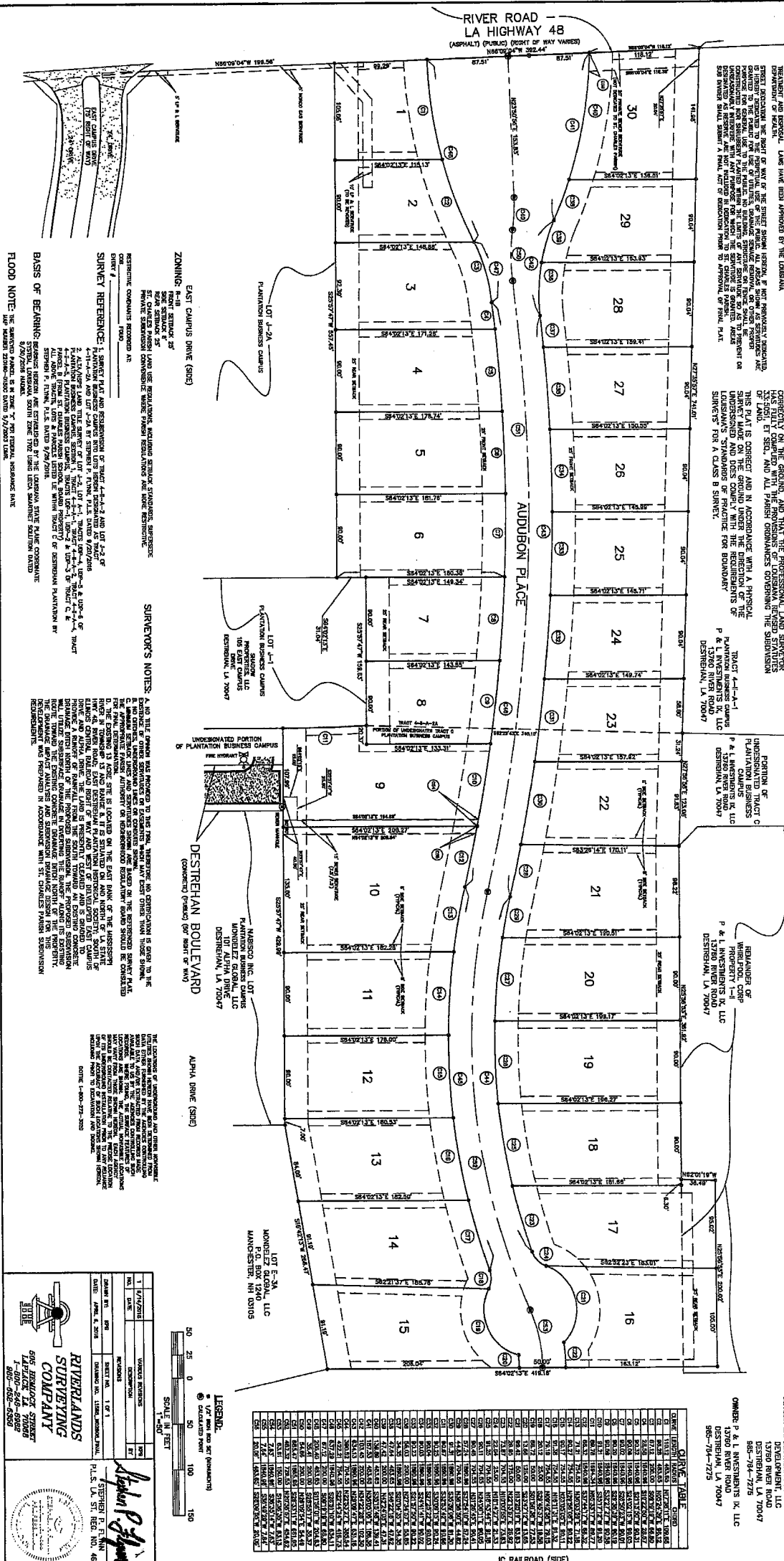
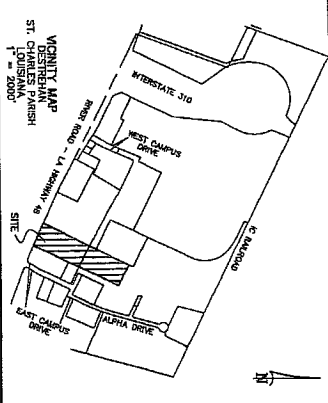
APPROVED: *[Signature]* DATE: 7-17-18
 CHAIRMAN OF THE PARISH COUNCIL
 APPROVED: *[Signature]* DATE: 7-11-18
 PARISH PRESIDENT
 APPROVED: *[Signature]* DATE: 7-9-2018
 PLANNING & ZONING COMMISSION CHAIRMAN

RECORDED IN THE CLERK OF COURT'S OFFICE
 ST. CHARLES PARISH ON THE 17th
 DAY OF JULY IN BOOK 865
 PAGE 397 ENTRY # 433995
 INTERESTIVE 310 (SIBS)
 WEST CAMPUS DRIVE (SIBS)

THE EXTENT SHALL CERTIFY THAT THE FINAL PLAT IS BASED UPON AN
 ACCURATE SURVEY MADE BY THE SURVEYOR AND THAT THE SURVEYOR HAS
 FULLY COMPLIED WITH THE PROVISIONS OF LOUISIANA REVISED STATUTES
 OF 1952, AS AMENDED, AND ALL PARISH ORDINANCES GOVERNING THE SUBDIVISION
 OF LAND.
 THIS PLAT IS CORRECT AND IN ACCORDANCE WITH A PHYSICAL
 SURVEY MADE ON THE GROUND UNDER THE DIRECTION OF THE
 SURVEYOR AND IN ACCORDANCE WITH THE STANDARDS OF PRACTICE FOR BOUNDARY
 SURVEYS FOR A CLASS B SURVEY.

REMANUER OF
 WHIRLPOOL CORP
 PROPERTIES IN LLC
 1370 RIVER ROAD
 DESTREHAN, LA 70047

AREA TABLE	
1	15,428 SQ. FT.
2	17,229 SQ. FT.
3	15,043 SQ. FT.
4	15,043 SQ. FT.
5	15,043 SQ. FT.
6	15,043 SQ. FT.
7	15,043 SQ. FT.
8	15,043 SQ. FT.
9	15,043 SQ. FT.
10	15,043 SQ. FT.
11	15,043 SQ. FT.
12	15,043 SQ. FT.
13	15,043 SQ. FT.
14	15,043 SQ. FT.
15	15,043 SQ. FT.
16	15,043 SQ. FT.
17	15,043 SQ. FT.
18	15,043 SQ. FT.
19	15,043 SQ. FT.
20	15,043 SQ. FT.
21	15,043 SQ. FT.
22	15,043 SQ. FT.
23	15,043 SQ. FT.
24	15,043 SQ. FT.
25	15,043 SQ. FT.
26	15,043 SQ. FT.
27	15,043 SQ. FT.
28	15,043 SQ. FT.
29	15,043 SQ. FT.
30	15,043 SQ. FT.
TOTAL	504,718 SQ. FT.



ZONING: R-1B
 EAST CAMPUS DRIVE (SIBS)
 DESTREHAN BUSINESS CAMPUIS
 DESTREHAN BUSINESS CAMPUIS
 DESTREHAN BUSINESS CAMPUIS
 DESTREHAN BUSINESS CAMPUIS

SURVEYOR'S NOTES:
 1. THIS SURVEY WAS MADE BY THE SURVEYOR AND IN ACCORDANCE WITH THE STANDARDS OF PRACTICE FOR BOUNDARY SURVEYS FOR A CLASS B SURVEY.
 2. THE SURVEYOR HAS FULLY COMPLIED WITH THE PROVISIONS OF LOUISIANA REVISED STATUTES OF 1952, AS AMENDED, AND ALL PARISH ORDINANCES GOVERNING THE SUBDIVISION OF LAND.
 3. THIS PLAT IS CORRECT AND IN ACCORDANCE WITH A PHYSICAL SURVEY MADE ON THE GROUND UNDER THE DIRECTION OF THE SURVEYOR AND IN ACCORDANCE WITH THE STANDARDS OF PRACTICE FOR BOUNDARY SURVEYS FOR A CLASS B SURVEY.

OWNER: P & L INVESTMENTS IX, LLC
 1370 RIVER ROAD
 DESTREHAN, LA 70047
 504-794-7275

RIVERLANDS SURVEYING COMPANY
 9824 RIVERLANDS DRIVE
 SUITE 100
 METairie, LA 70002
 504-885-5500
 504-885-5501
 504-885-5502

[Signature]
 SURVEYOR

