

SECTION 17
T12S-R7E

EVANGELINE ROAD (SIDE)

EVANGELINE CITY SUB., UNIT 4

1

2

3

8A

10

11

12

13

15A

22A-1

VACANT LOTS
(NOW OR FORMERLY)
CRISTINA AND LAURICELLA, INC.

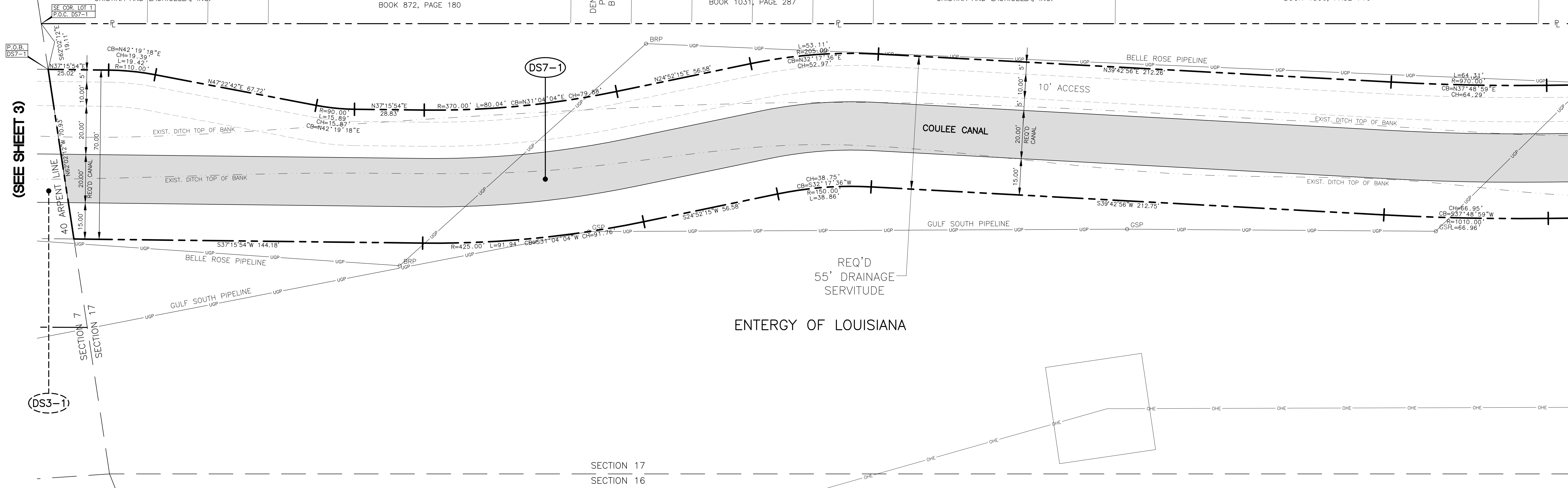
NO. 650
DENNIS L. ZUMBRUN AND
PATRICIA J. ZUMBRUN
BOOK 872, PAGE 180

DENNIS L. ZUMBRUN AND
PATRICIA J. ZUMBRUN
BOOK 553, PAGE 647

NO. 654
PRESTON DUPLESSIS AND
TAMMY STARNES DUPLESSIS
BOOK 1031, PAGE 287

VACANT
(NOW OR FORMERLY)
CRISTINA AND LAURICELLA, INC.

NO. 670
WANDA L. SCHIFF
BOOK 1306, PAGE 716



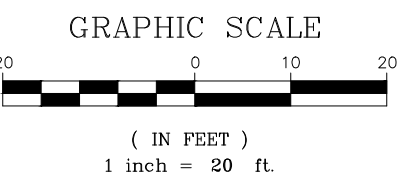
(SEE SHEET 3)

MATCHLINE (SHEET 8)

(DS3-1)

(DS7-1)

SECTION 17
SECTION 16



DRAINAGE SERVITUDE
REQUIRED DRAINAGE SERVITUDES FOR
A PORTION OF COULEE CANAL
SECTIONS 6, 7, 17 & 42, T12S-R7E
TOWN OF MONTZ
ST. CHARLES PARISH, LA.



3445 N. CAUSEWAY BLVD., STE. 401, METAIRIE, LA. 70002 (504)838-6009

8/25/2015	REVISED DS4-1, DS5-1, DS11-2 and DS12-1	E.W.P.	SCALE: 1" = 20'	DRAWN BY: EWP
DATE	REVISION RECORD	DRAWN BY	DATE: 4/21/2015	CHECKED BY: CAM
			JOB NO. 413-2060106.004	SHEET NO. 7 OF 15

G:\DWG\51413\0051206016.004 Coulee Canal Improvements\DWG - Revised 8-25-2015\Coulee Canal Reqd Drainage Servitudes with Geometry and Topo Survey - Revised 8-25-15.dwg Aug 26, 2015 - 8:32am

SECTION 17
T12S-R7E

EVANGELINE ROAD (SIDE)

EVANGELINE CITY SUB., UNIT 4

27A
NO. 674
CHRISTOPHER M. DUPLESSIS
BOOK 1351, PG. 8

30A
VACANT
(NOW OR FORMERLY)
CRISTINA AND LAURICELLA, INC.

33A
VACANT
(NOW OR FORMERLY)
CRISTINA AND LAURICELLA, INC.

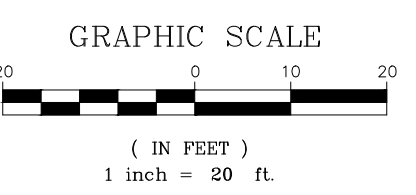
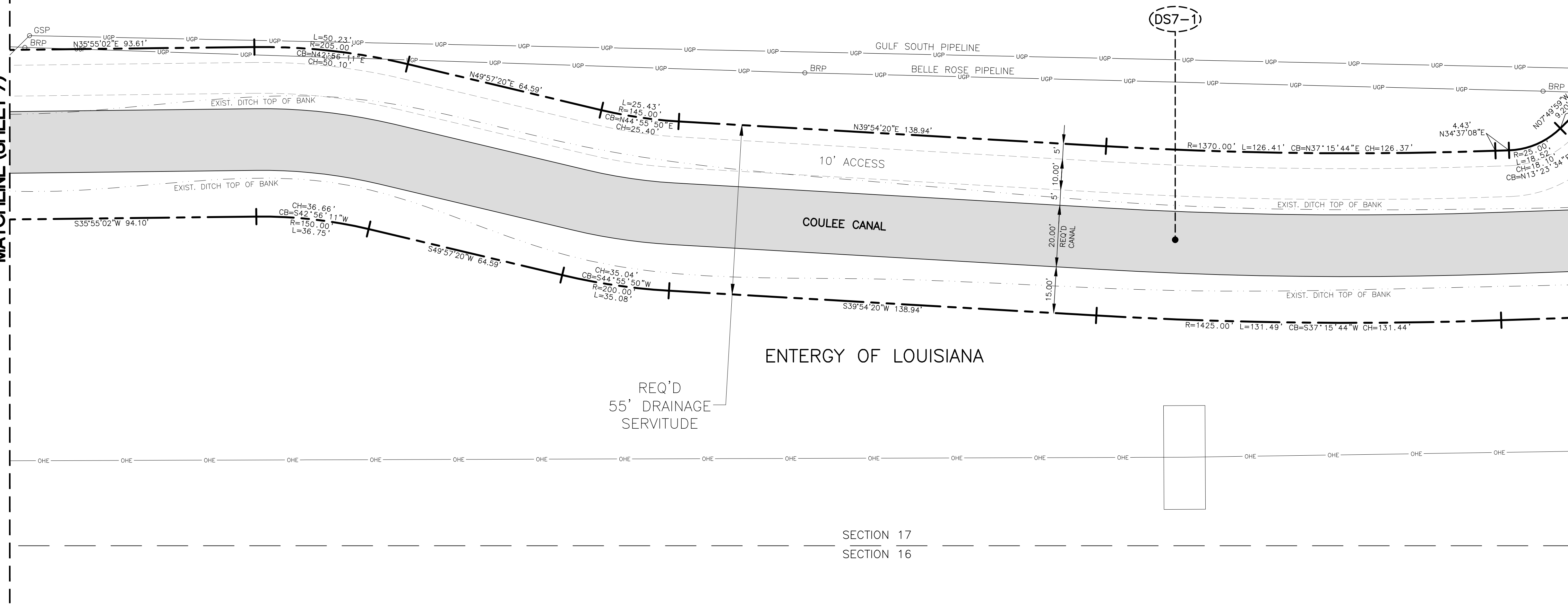
37A
NO. 702
DEREK DEMETRIUS WININGER
BOOK 1312, PG. 189

40A
NO. 720
SIDNEY J. TRICHE
BOOK 1262, PG. 561

44A
NO. 740
DENISE HYMEL BREWER
BOOK 1268, PAGE 555

MATCHLINE (SHEET 7)

MATCHLINE (SHEET 14)



DRAINAGE SERVITUDE
REQUIRED DRAINAGE SERVITUDES FOR
A PORTION OF COULEE CANAL
SECTIONS 6, 7, 17 & 42, T12S-R7E
TOWN OF MONTZ
ST. CHARLES PARISH, LA.

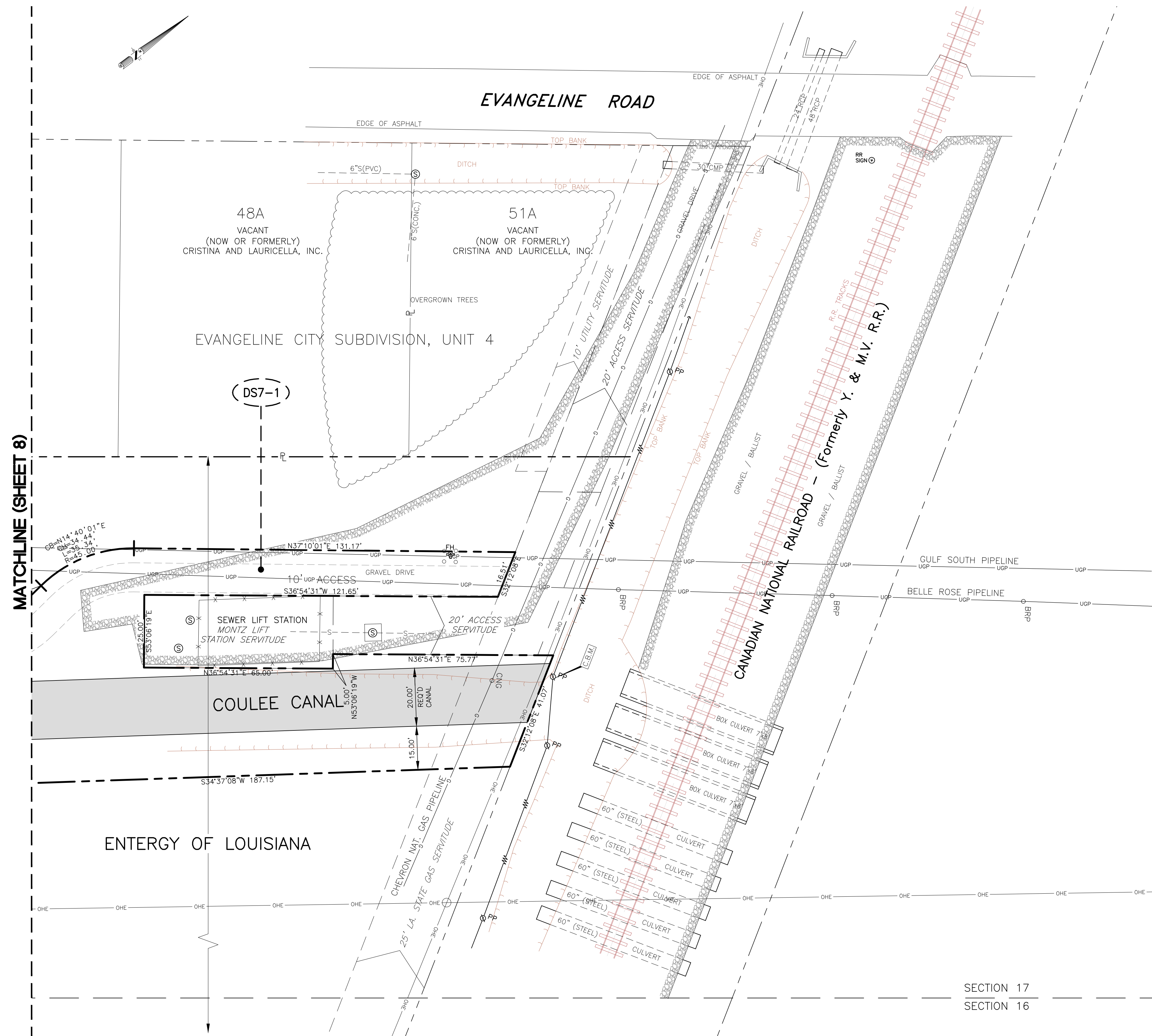


3445 N. CAUSEWAY BLVD., STE. 401, METAIRIE, LA. 70002 (504)838-6009

8/25/2015	REVISED DS4-1, DS5-1, DS11-2 and DS12-1	E.W.P.	SCALE: 1" = 20'	DRAWN BY: EWP
DATE	REVISION RECORD	DRAWN BY	DATE: 4/21/2015	CHECKED BY: CAM
			JOB NO. 413-2060106.004	SHEET NO. 8 OF 15

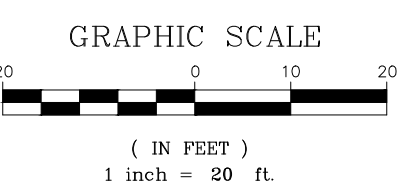
G:\DWG\51413\0051206016.004 Coulee Canal Improvements\DWG - Revised 8-25-2015\Coulee Canal Req'd Drainage Servitudes with Geometry and Topo Survey - Revised 8-25-15.dwg Aug 26, 2015 - 8:33am

SECTION 17
T12S-R7E



MATCHLINE (SHEET 8)

SECTION 17
SECTION 16



DRAINAGE SERVITUDE
REQUIRED DRAINAGE SERVITUDES FOR
A PORTION OF COULEE CANAL
SECTIONS 6, 7, 17 & 42, T12S-R7E
TOWN OF MONTZ
ST. CHARLES PARISH, LA.



3445 N. CAUSEWAY BLVD., STE. 401, METAIRIE, LA. 70002 (504)838-6009

8/25/2015	REVISED DS4-1, DS5-1, DS11-2 and DS12-1	E.W.P.	SCALE: 1" = 20'	DRAWN BY: EWP
DATE	REVISION RECORD	DRAWN BY	DATE: 4/21/2015	CHECKED BY: CAM
			JOB NO. 413-2060106.004	SHEET NO. 14 OF 15

G:\DWGSET\413\005\2060106.004_Coulee Canal Improvements\DWG - Revised 8-25-2015\Coulee Canal Reop Drainage Servitudes with Geometry and Topo Survey - Revised 8-25-15.dwg Aug 26, 2015 - 8:37am