

# St. Charles Parish

---

Parish President's Report

January 9, 2023

President Matthew Jewell



# Killona, Montz Tornado Update

---

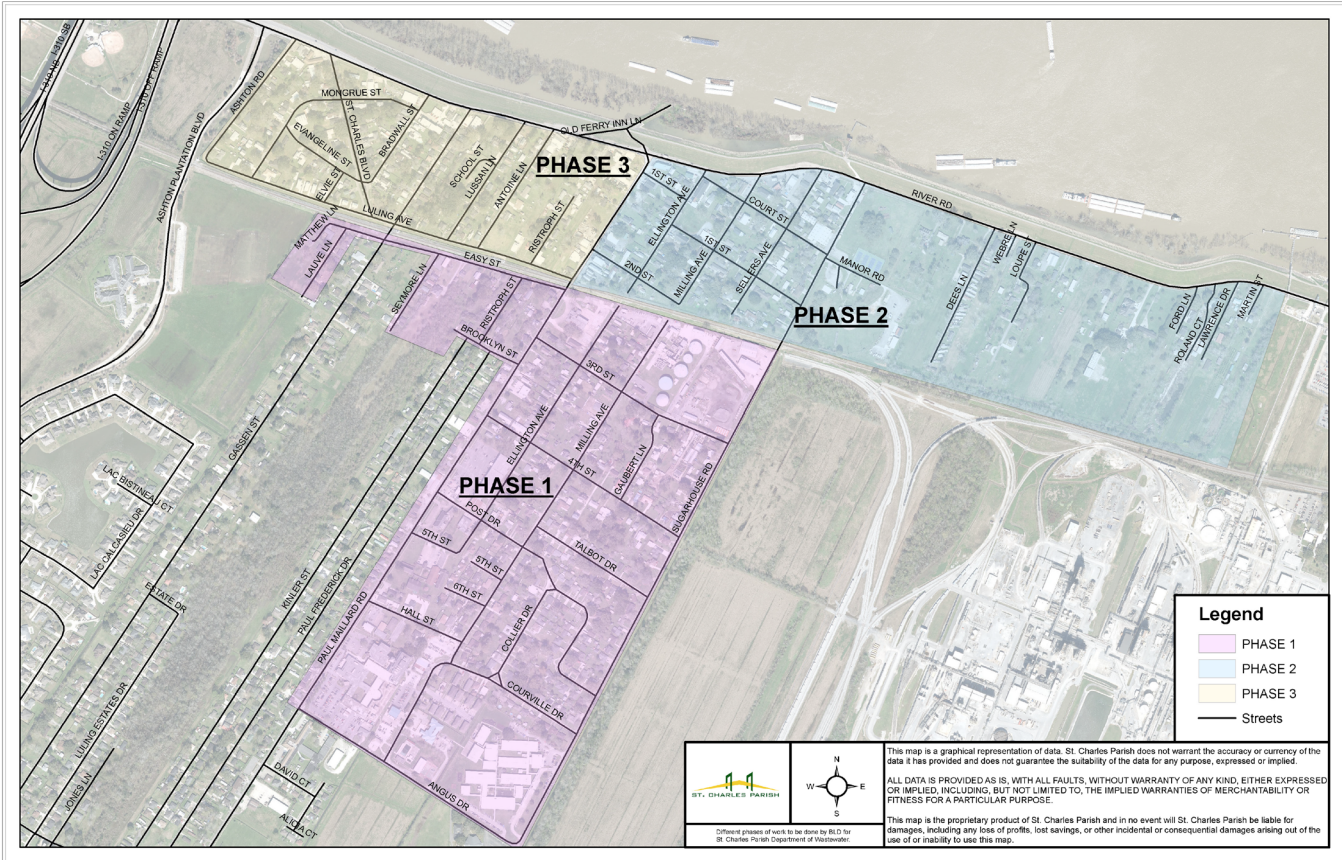


# Killona, Montz Tornado Update

---



# Smoke Tests in Luling



# Sales Tax – November 2022

	2021	2022		
January	3,182,299.23	3,438,056.19	255,756.96	8.04%
February	2,894,877.58	2,936,796.46	41,918.88	1.45%
March	3,779,275.54	3,990,492.32	211,216.78	5.59%
April	2,901,422.16	3,175,474.28	274,052.12	9.45%
May	3,247,281.02	3,374,967.82	127,686.80	3.93%
June	3,625,287.15	3,568,177.70	(57,109.45)	-1.58%
July	2,865,826.99	3,351,436.08	485,609.09	16.94%
August	2,668,577.43	2,974,972.73	306,395.30	11.48%
September	3,178,606.66	3,823,992.55	645,385.89	20.30%
October	3,335,954.22	3,738,122.44	402,168.22	12.06%
November	3,083,373.36	4,316,595.26	1,233,221.90	40.00%
December	4,396,592.15			0.00%
	39,159,373.49	38,689,083.83		

# MLK Book Drive

---



## MLK BOOK DRIVE

---



Throughout January, people can drop off new or gently used children's books to the RSVP office located inside the

**EDWARD A. DUFRESNE COMMUNITY CENTER**  
**274 JUDGE EDWARD DUFRESNE PARKWAY, LULING**

The donated books will be distributed to local schools.