

2018-0348

**INTRODUCED BY: LARRY COCHRAN, PARISH PRESIDENT
(DEPARTMENT OF PLANNING & ZONING)**

RESOLUTION NO. 6387

A resolution providing mandatory supporting authorization to endorse the Resubdivision of a Portion of Lot A of Fashion Plantation as requested by Jerome Lombardo and Brian Lombardo, with a waiver from the requirement for frontage on a developed street.

WHEREAS, the St. Charles Parish Subdivision Ordinance of 1981 requires that the Parish Council endorse waivers from the subdivision regulations; and,

WHEREAS, the Jerome Lombardo and Brian Lombardo, request resubdivision of a Portion of Lot A, Fashion Plantation Subdivision in which proposed Lots L-2 and L-3 will not have frontage on a developed street as the subdivision regulations require; and,

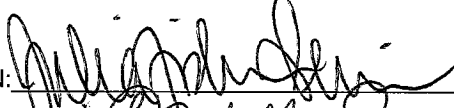
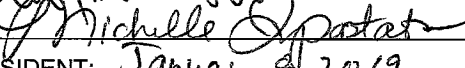


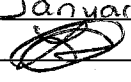
WHEREAS, the Planning and Zoning Commission approved the resubdivision plat by Louis J. Gassen dated November 8, 2018 with Lots L-2 and L-3 served by a 25-foot wide access & utility servitude but with no frontage on a developed street.

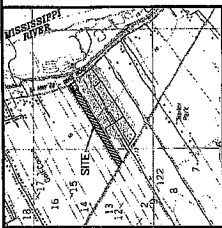
NOW, THEREFORE, BE IT RESOLVED THAT THE ST. CHARLES PARISH COUNCIL, does hereby provide this supporting resolution to endorse the approval of the Resubdivision of a Portion of Lot A of a Subdivision of Lots 16, 17, & 18 of Fashion Plantation as shown on a plat by Louis J. Gassen, PLS dated November 8, 2018 as requested by Jerome Lombardo and Brian Lombardo, with a waiver from the requirement for frontage on a developed street.

The foregoing resolution having been submitted to a vote, the vote thereon was as follows:

YEAS: BENEDETTO, HOGAN, WILSON, CLULEE, GIBBS, WOODRUFF,
 BELLOCK, FLETCHER, FISHER-PERRIER
NAYS: NONE
ABSENT: NONE

And the resolution was declared adopted this 7th day of January, 2019, to become effective five (5) days after publication in the Official Journal.

CHAIRMAN: 
SECRETARY: 
DLVD/PARISH PRESIDENT: January 8, 2019
APPROVED:  DISAPPROVED: _____
PARISH PRESIDENT: 
RETD/SECRETARY: January 9, 2019
AT: 1:20 pm RECD BY: 



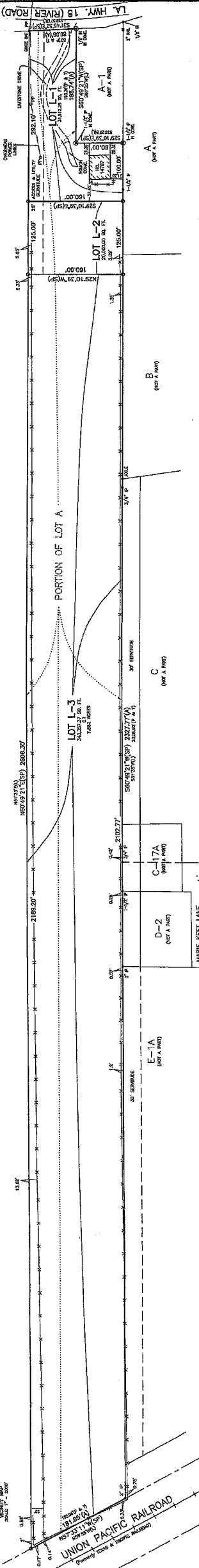
APPROVED: *[Signature]* 12/1/15
 ST. CHARLES, LOUISIANA
 LUCIEN C. GASSIGN
 SURVEYOR

[Signature] 11/24/15
 ST. CHARLES, LOUISIANA
 HENRIE L. LAMAR
 SURVEYOR

[Signature] 11/11/15
 ST. CHARLES, LOUISIANA
 GUY P. BROWN
 SURVEYOR

Recorded in the Clerk of Court's office
 St. Charles Parish on the _____ day of _____
 File _____
 Signature _____

LOT 19
(NOT A PART)



PORTION OF LOT A

RESUBMISSION OF A PORTION OF LOT A
OF A SUBDIVISION OF LOTS 16, 17 & 18 OF FASHION PLANTATION
(PER PLAN BY H. E. LANDRY, C.E., DATED JAN. 24, 1928)
INTO LOTS L-1, L-2 & L-3
IN SECTION 2, T13S - R20E
ST. CHARLES PARISH, LOUISIANA
SCALE: 1" = 60'

LUCIEN C. GASSIGN
SURVEYING SERVICES

LOUISIANA STATE BOARD OF SURVEYORS
 LOUISIANA PROFESSIONAL SURVEYORS
 LICENSE NO. 11508
 LOUISIANA SURVEYING BOARD

RESUBMITTED TO: HENRIE L. LAMAR, 111
 14197 RIVER ROAD
 HANNAVILLE, LOUISIANA 70057

RECEIVED BY: H. E. LANDRY, C.E., DATED JAN. 24, 1928
 ST. CHARLES PARISH, LOUISIANA

RECORDED IN THE CLERK OF COURT'S OFFICE
 ST. CHARLES PARISH, LOUISIANA
 ON _____ DAY OF _____
 19____

LUCIEN C. GASSIGN
 SURVEYOR

HENRIE L. LAMAR
 SURVEYOR

GUY P. BROWN
 SURVEYOR

UNION PACIFIC RAILROAD
 PROPERTY 2206 & 2606 (RAILROAD)

MISSISSIPPI RIVER

LA. HWY. 18 (RIVER ROAD)