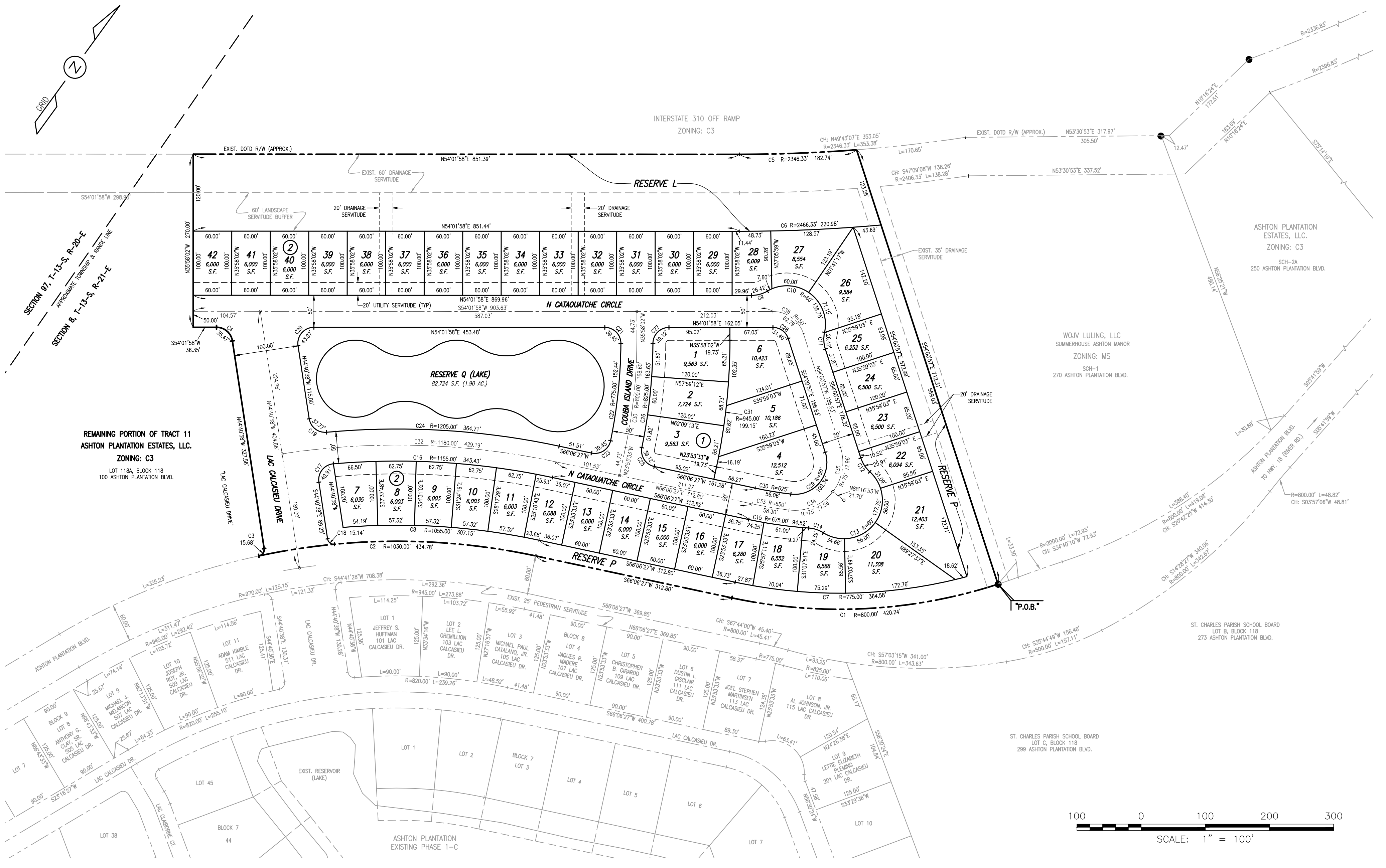


16.45 ACRES
SUBDIVISION AREA
R-1A
ZONING
42
NUMBER OF LOTS
60' x 100' (6,000 SQFT)
MIN. LOT SIZE
100.00'
BLVD. R/W WIDTH
50.00'
STREET R/W WIDTH
405.37'
BLVD. LENGTH
2,361.92
STREET LENGTH
SUB-SURFACE (SEE NOTE)
DRAINAGE SYSTEM

CURVE	RADIUS	ARC LENGTH	CHORD LENGTH	CHORD BEARING
C1	800.00'	420.24'	415.43'	S51°03'31"W
C2	1030.00'	434.78'	431.56'	S54°00'54"W
C3	10.00'	15.68'	14.13'	N00°11'10"E
C4	25.00'	35.47'	32.57'	N85°19'20"W
C5	2346.33'	182.74'	182.69'	N51°48'08"E
C6	2466.33'	220.98'	220.91'	N51°27'55"E
C7	775.00'	364.58'	361.22'	S52°37'51"W
C8	1055.00'	307.15'	306.07'	S57°46'24"W
C9	50.00'	26.42'	26.11'	N38°53'47"E
C10	60.00'	138.75'	109.84'	S89°59'29"E
C11	50.00'	26.42'	26.11'	S38°52'46"E
C12	50.00'	25.91'	25.62'	S68°51'41"E
C13	60.00'	177.75'	119.52'	S01°09'49"W
C14	50.00'	24.39'	24.15'	S72°03'30"W
C15	675.00'	94.52'	94.44'	S62°05'38"W
C16	1155.00'	343.43'	342.17'	S57°35'22"W
C17	25.00'	40.91'	36.49'	S02°11'49"W
C18	10.00'	15.14'	13.74'	S88°03'17"E
C19	25.00'	37.77'	34.28'	N87°57'20"W
C20	25.00'	43.07'	37.94'	N04°40'40"E
C21	25.00'	39.45'	35.48'	S80°45'58"E
C22	775.00'	152.44'	152.20'	S29°55'47"E
C23	25.00'	39.45'	35.48'	S20°54'23"W
C24	1205.00'	364.71'	363.32'	S57°26'13"W
C25	25.00'	39.12'	35.25'	N69°04'12"W
C26	825.00'	163.63'	163.37'	N29°55'47"W
C27	25.00'	39.12'	35.25'	N08°12'37"E
C28	25.00'	31.40'	29.37'	S89°59'29"E
C29	50.00'	100.34'	84.33'	S03°28'34"W
C30	625.00'	56.06'	56.04'	S63°32'15"W
C31	945.00'	199.15'	198.78'	N29°55'47"W
C32	1180.00'	429.19'	426.83'	N55°41'16"E
C33	650.00'	58.30'	58.29'	N63°32'15"E
C34	75.00'	77.56'	74.15'	N31°20'36"E
C35	75.00'	72.69'	70.11'	N26°08'55"W
C36	50.00'	62.79'	58.74'	N89°59'29"W
C37	800.00'	168.60'	168.28'	N29°55'47"W



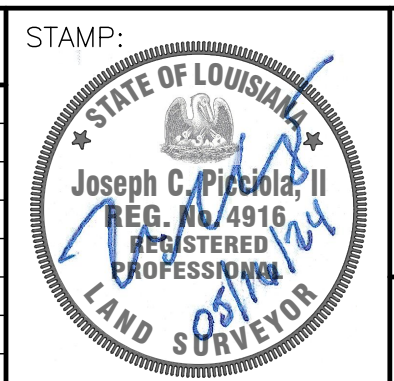
**DEDICATION**  
A FINAL "ACT OF DEDICATION" SHALL BE SUBMITTED BY SUBDIVIDER PRIOR TO APPROVAL OF THE FINAL PLAT.

**OWNERS**  
ASHTON PLANTATION ESTATES, LLC  
P.O. BOX 157  
HARVEY, LA 70059

ASHTON PLANTATION HOME OWNERS ASSOCIATION, INC.  
P.O. BOX 157  
HARVEY, LA 70059

**(PRELIMINARY PLAT)**  
PATIO HOMES SUBDIVISION  
ASHTON PLANTATION  
IN SECTION 8, T-13-S, R-21-E  
LULING, ST. CHARLES PARISH, LOUISIANA

REVISIONS:	
DATE:	REMARKS:
09-11-2023	REV.B: MISCELLANEOUS REVISIONS AS PER ST. CHARLES PARISH DEPARTMENT OF PLANNING AND ZONING COMMENTS.
10-30-2023	REV.C: REVISIONS TO SUBDIVISION LAYOUT.
05-16-2024	REV.D: REVISED ZONING AS PER ST. CHARLES PARISH DEPARTMENT OF PLANNING AND ZONING COMMENTS.



**PICCIOLA & ASSOCIATES, INC.**  
CIVIL ENGINEERS  
LAND SURVEYORS

NAVAL ARCHITECTS  
MARINE ENGINEERS

P.O. BOX 687  
CUT OFF, LOUISIANA 70345  
(985) 532-5786

DESIGNED BY: J.C.P.  
DRAWN BY: L.J.G.  
CHECKED BY: J.C.P.

DATE:	07/25/2023
SCALE:	AS SHOWN

**ASHTON PLANTATION ESTATES, LLC**

PATIO HOMES SUBDIVISION.  
PRELIMINARY PLAT

LULING, LOUISIANA ST. CHARLES PARISH, LOUISIANA

SHEET NO.	1 OF 4
REV.D	

- GENERAL NOTES:**
- NO TITLE RESEARCH WAS REQUESTED OR DONE FOR THE INVESTIGATION OF ANY RIGHT-OF-WAYS OR SERVICITUDES WHICH MAY AFFECT THE PROPERTY BEING SURVEYED. THEREFORE, EXISTING RIGHT-OF-WAYS OR SERVICITUDES MAY NOT SHOWN (IF ANY).
  - THE SURVEY OF THIS PROPERTY MAY INCLUDE VISIBLE TOPOGRAPHIC FEATURES, SUB-SURFACE UTILITIES, PIPELINES AND STRUCTURES WERE NOT LOCATED AND ARE NOT SHOWN UNLESS REQUESTED BY THE CLIENT.
  - BEARINGS AND COORDINATES ARE BASED ON LOUISIANA STATE PLANE, 1702 LOUISIANA SOUTH ZONE, U.S. SURVEY FEET, NAD 83 (2011) EPOCH 2010.00, VRS PROVIDER IS C4G.
  - IF APPLICABLE, SHOWN COORDINATES INDICATE PROPERTY LINE CORNERS. THESE COORDINATES DO NOT INDICATE THE LOCATION OF THE ACTUAL SURVEY MARKER ITSELF. SURVEY MARKERS MAY BE SLIGHTLY OFF OF ACTUAL PROPERTY LINE CORNERS.
  - AT THE TIME OF OUR SURVEY, UNLESS OTHERWISE INDICATED, THERE ARE NO BUILDINGS OR STRUCTURES SITUATED WITHIN THE SURVEYED PROPERTY LINES.

**FLOOD ZONE:**  
THE PROPOSED PATIO HOMES SUBDIVISION IS LOCATED IN FLOOD ZONE "X". THIS AREA IS PROTECTED FROM THE 100 YEAR FLOOD BY LEVEE, DIKE OR OTHER STRUCTURE SUBJECT TO FAILURE OR OVERTOPPING DURING LARGER FLOODING AND HAS NO DESIGNATED BASE FLOOD ELEVATION. COMMUNITY PANEL NO. 220160-0125C, EFFECTIVE DATE OF JUNE 16, 1992.

THE PROPERTY IS LOCATED OUTSIDE THE "LIMITS OF ABIES".

THE PROPOSED SUBDIVISION IS ALSO PARTIALLY LOCATED IN THE ST. CHARLES PARISH PRELIMINARY FIRM, FLOOD ZONE "X" WITH NO DESIGNATED BASE FLOOD ELEVATION AND PARTIALLY LOCATED IN FLOOD ZONE "AE" WITH A BASE FLOOD ELEVATION OF +4.0', COMMUNITY PANEL NO. 220160-0145 D, PRELIMINARY MAP DATED OCTOBER 30, 2008.

- REFERENCE MAPS:**
- SET OF DRAWINGS PREPARED BY KREBS, LASALLE, LEMUEUX CONSULTANTS, INC. DATED JULY 12, 1999 WITH A LATEST REVISION DATE OF APRIL 10, 2000 AND TITLED "ASHTON PLANTATION, PHASE 1" BEING PARTIALLY IN SECTION 87 AND 97, T-13-S, R-20-E, AND SECTION 8, T-13-S, R-21-E, ST. CHARLES PARISH, LOUISIANA.
  - SET OF DRAWINGS PREPARED BY DANNY A. HEBERT, P.E. DATED MARCH 15, 2000 AND TITLED "ASHTON PLANTATION SPINE ROAD", SECTION 8, T-13-S, R-21-E, ST. CHARLES PARISH, LOUISIANA.
  - SHEET 1 OF 2 OF A SET OF DRAWINGS PREPARED BY KREBS, LASALLE, LEMUEUX CONSULTANTS, INC. DATED FEBRUARY 21, 2006 AND TITLED "ASHTON PLANTATION, PHASE 1-C", SECTION 8, T-13-S, R-21-E, ST. CHARLES PARISH, LOUISIANA.
  - PLAT PREPARED BY KREBS, LASALLE, LEMUEUX CONSULTANTS, INC. DATED JANUARY 24, 2010 AND TITLED "ACT OF CORRECTION FOR THE RESUBDIVISION OF A PORTION OF TRACT 11, ASHTON PLANTATION", SECTION 8, T-13-S, R-21-E, ST. CHARLES PARISH, LOUISIANA.
  - PLAT PREPARED BY PICCIOLA & ASSOCIATES, INC. DATED MAY 12, 2016 AND TITLED "ASHTON PLANTATION ESTATES, LLC", SECTION 8, T-13-S, R-21-E, ST. CHARLES PARISH, LOUISIANA, J.N. 1201-1501.1.
  - PLAT PREPARED BY LUCIEN C. GASSEN SURVEYING SERVICES DATED JUNE 4, 2018 AND TITLED "ASHTON PLANTATION PHASE 2-A" (FINAL PLAT), BEING IN SECTIONS 97 & 98, T-13-S, R-20-E, ST. CHARLES PARISH, LOUISIANA.
  - SHEET 1 OF 4 OF A SET OF DRAWINGS PREPARED BY LUCIEN C. GASSEN SURVEYING SERVICES DATED JUNE 4, 2018 AND TITLED "ASHTON PLANTATION DRAINAGE SERVICITUDES", BEING IN SECTIONS 94, 95, 96, 97, 98 AND 99, T-13-S, R-20-E, AND SECTION 8, T-13-S, R-21-E, ST. CHARLES PARISH, LOUISIANA.
  - PLAT PREPARED BY PICCIOLA & ASSOCIATES, INC. DATED SEPTEMBER 28, 2022 WITH A LATEST REVISION DATE OF OCTOBER 10, 2022 AND TITLED "ASHTON PLANTATION ESTATES, LLC", RESUBDIVISION OF PARCEL TRACT 9 OF ASHTON PLANTATION INTO TRACT 9-1, TRACT 9-1A, TRACT 9-2, AND TRACT 9-2, BEING IN SECTION 8, T-13-S, R-21-E, J.N. 0808-2202.

**DRAINAGE NOTE:**  
THE STORM DRAINAGE RUN-OFF WILL BE HANDLED VIA SUBSURFACE DRAINAGE PIPES ALONG PROPOSED STREETS AND DRAINED INTO THE PROPOSED RESERVOIR (LAKE), THENCE INTO EXISTING DRAINAGE DITCHES WHICH ARE ULTIMATELY PUMPED INTO THE 80 ARPERT CANAL VIA THE 80 ARPERT PUMPING STATION.

**SEWERAGE DISPOSAL:**  
SEWERAGE COLLECTION FROM THE PROPOSED PATIO HOMES SUBDIVISION WILL BE HANDLED VIA A LIFT STATION LOCATED WITHIN THE PROPOSED DEVELOPMENT. THE FORCE MAIN FROM SAID LIFT STATION SHALL TIE INTO THE EXISTING 6" FORCE MAIN PARALLELING ASHTON PLANTATION BOULEVARD AND ULTIMATELY PUMPED INTO A SEWERAGE TREATMENT PLANT WHICH IS OWNED AND OPERATED BY ST. CHARLES PARISH, DEPARTMENT OF PUBLIC WORKS AND WASTEWATER.

**SETBACK TABLE:**  
FRONT SETBACK = 20'  
REAR SETBACK = 20'  
SIDE SETBACK = 5'

**SETBACK NOTE:**  
ST. CHARLES PARISH LAND USE REGULATIONS, INCLUDING SETBACK STANDARDS, SUPERSEDE PRIVATE SUBDIVISION COVENANTS WHERE PARISH REGULATIONS ARE MORE RESTRICTIVE.

**SURVEY DATA**  
HORIZONTAL CONTROL: LOUISIANA STATE PLANE, 1702 LOUISIANA SOUTH ZONE, (NAD 83 (2011) EPOCH 2010.00), U.S. SURVEY FEET VRS PROVIDER IS C4G.

CORS STATION: LINES  
NAD 83(2011) POSITION  
29 54 01.29540(N) 090 20 57.83369(W)  
NAD 83(2011) ELLIP HT -15.711(METERS)  
NAD 83(2011) EPOCH 2010.00

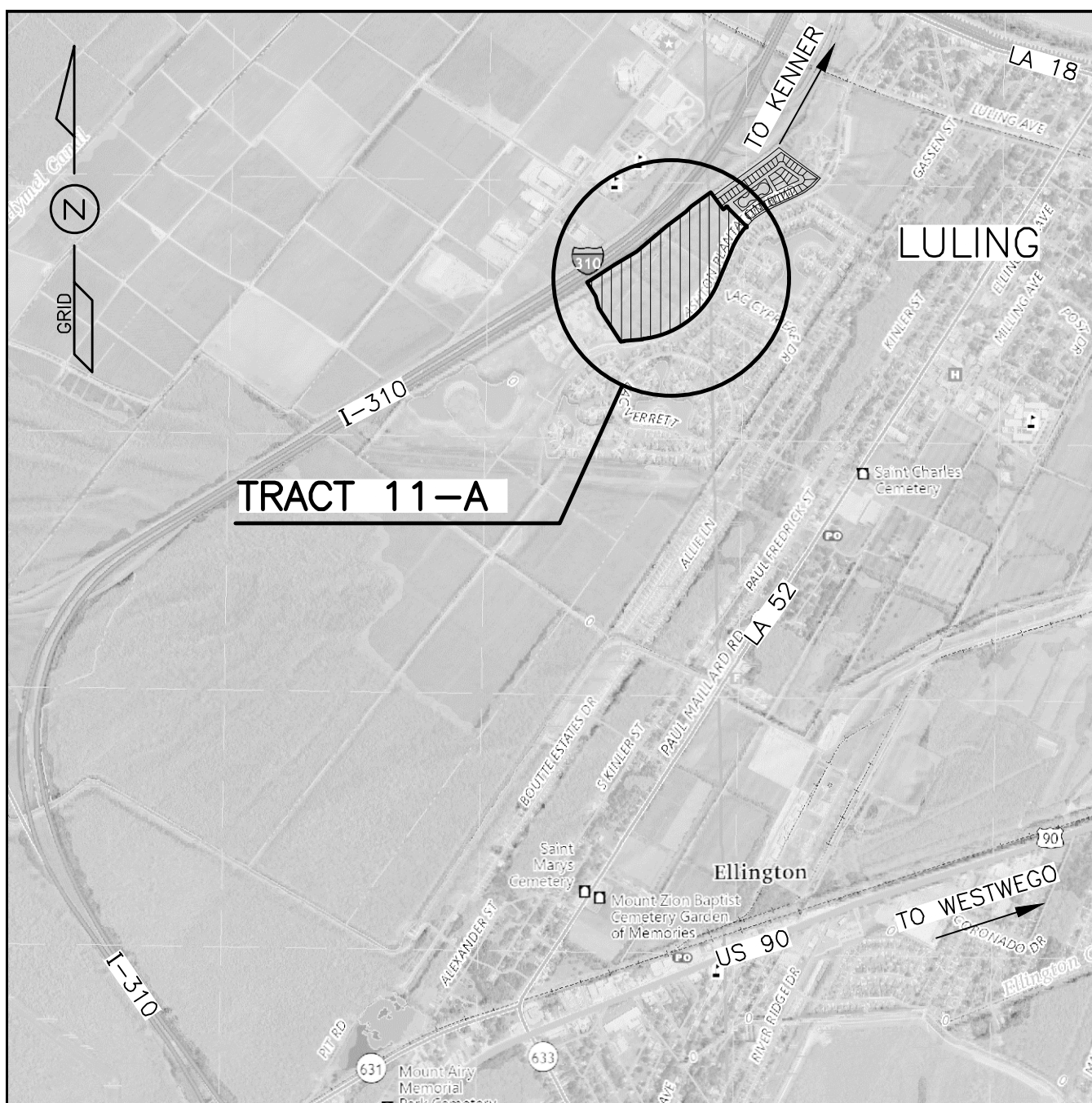
**LEGEND:**

- EX. IRON MARKERS
- Ⓢ DENOTES SQUARE NUMBER
- 22 DENOTES LOT NUMBER

**VERTICAL CONTROL:**  
NAVD 88 (SECOND 18, REV. 11/26/19)

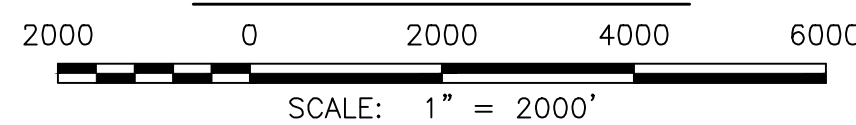
ISSUED FOR REVIEW





TRACT 11-A

LOCAL VICINITY MAP



**GENERAL NOTES:**

1. NO TITLE RESEARCH WAS REQUESTED OR DONE FOR THE INVESTIGATION OF ANY RIGHT-OF-WAYS OR SERVITUDES WHICH MAY AFFECT THE PROPERTY BEING SURVEYED. THEREFORE, EXISTING RIGHT-OF-WAYS OR SERVITUDES MAY NOT SHOWN (IF ANY).

**REFERENCE MAPS:**

1. SET OF DRAWINGS PREPARED BY KREBS, LASALLE, LEMIEUX CONSULTANTS, INC. DATED JULY 12, 1999 WITH A LATEST REVISION DATE OF APRIL 10, 2000 AND TITLED "ASHTON PLANTATION, PHASE 1" BEING PARTIALLY IN SECTION 87 AND 97, T-13-S, R-20-E, AND SECTION 8, T-13-S, R-21-E, ST. CHARLES PARISH, LOUISIANA.
2. SET OF DRAWINGS PREPARED BY DANNY J. HEBERT, P.E. DATED MARCH 15, 2000 AND TITLED "ASHTON PLANTATION SPINE ROAD", SECTION 8, T-13-S, R-21-E, ST. CHARLES PARISH, LOUISIANA.
3. SHEET 1 OF 2 OF A SET OF DRAWINGS PREPARED BY KREBS, LASALLE, LEMIEUX CONSULTANTS, INC. DATED FEBRUARY 21, 2006 AND TITLED "ASHTON PLANTATION, PHASE 1-C", SECTION 8, T-13-S, R-21-E, ST. CHARLES PARISH, LOUISIANA.
4. PLAT PREPARED BY KREBS, LASALLE, LEMIEUX CONSULTANTS, INC. DATED JANUARY 24, 2010 AND TITLED "ACT OF CORRECTION FOR THE RESUBDIVISION OF A PORTION OF TRACT 11, ASHTON PLANTATION", SECTION 8, T-13-S, R-21-E, ST. CHARLES PARISH, LOUISIANA.
5. PLAT PREPARED BY PICCIOLA & ASSOCIATES, INC. DATED MAY 12, 2016 AND TITLED "ASHTON PLANTATION ESTATES, LLC", SECTION 8, T-13-S, R-21-E, ST. CHARLES PARISH, LOUISIANA. J.N. 1201-1501.1.
6. SET OF DRAWINGS PREPARED BY DANNY J. HEBERT, P.E. DATED MARCH 24, 2017 AND TITLED "ASHTON PLANTATION PHASE 2A", ST. CHARLES PARISH, LOUISIANA.
7. PLAT PREPARED BY LUCIEN C. GASSEN SURVEYING SERVICES DATED JUNE 4, 2018 AND TITLED "ASHTON PLANTATION PHASE 2-A" (FINAL PLAT), BEING IN SECTIONS 84, 85, 86, 87, 97, 98 AND 99, T-13-S, R-20-E, AND SECTION 8, T-13-S, R-21-E, ST. CHARLES PARISH, LOUISIANA.
8. SET OF DRAWINGS PREPARED BY LUCIEN C. GASSEN SURVEYING SERVICES DATED JUNE 4, 2018 AND TITLED "ASHTON PLANTATION DRAINAGE SERVITUDES", BEING IN SECTIONS 84, 85, 86, 87, 97, 98 AND 99, T-13-S, R-20-E, AND SECTION 8, T-13-S, R-21-E, ST. CHARLES PARISH, LOUISIANA.
9. PLAT PREPARED BY PICCIOLA & ASSOCIATES, INC. DATED SEPTEMBER 28, 2022 WITH A LATEST REVISION DATE OF OCTOBER 10, 2022 AND TITLED "ASHTON PLANTATION ESTATES, LLC", RESUBDIVISION OF PARCEL TRACT 9 OF ASHTON PLANTATION INTO TRACT 9-1, TRACT 9-1A, TRACT 9-2, AND TRACT 9-2, BEING IN SECTION 8, T-13-E, R-21-E, J.N. 0808-2202.

**LEGEND:**

● EX. IRON MARKERS

**OWNERS**

ASHTON PLANTATION ESTATES, LLC  
P.O. BOX 157  
HARVEY, LA 70059

ASHTON PLANTATION HOME OWNERS ASSOCIATION, INC.  
P.O. BOX 157  
HARVEY, LA 70059

**SURVEY DATA**

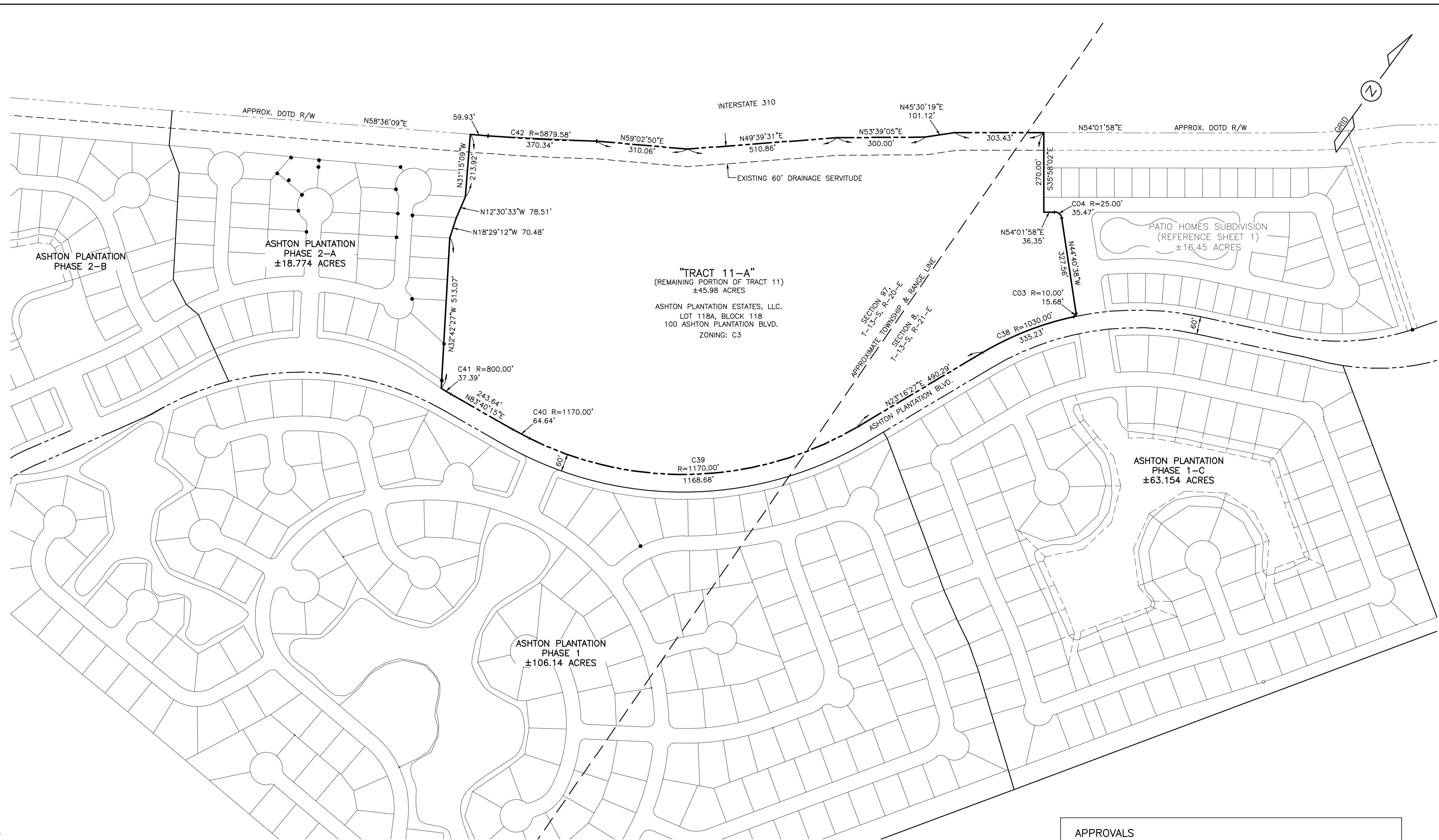
HORIZONTAL CONTROL: LOUISIANA STATE PLANE,  
1702 LOUISIANA SOUTH ZONE, (NAD 83 (2011)  
EPOCH 2010.00), U.S. SURVEY FEET VRS  
PROVIDER IS CAG.

CORS STATION: LWES  
NAD 83(2011) POSITION  
29 54 01.29540(N) 090 20 57.83369(W)  
NAD 83(2011) ELLIP HT -15.711(METERS)  
NAD 83(2011) EPOCH 2010.00

**VERTICAL CONTROL:**

NAVD 88 (GEOID 18, REV. 11/26/19)

TRACT 11-A CURVE TABLE				
CURVE	RADIUS	ARC LENGTH	CHORD LENGTH	CHORD BEARING
C3	10.00'	15.68'	14.13'	N00°11'10"E
C3	25.00'	35.47'	32.57'	N85°19'20"W
C3B	1030.00'	335.23'	333.76'	S32°35'54"W
C39	1170.00'	1168.68'	1120.70'	S51°53'23"W
C40	1170.00'	64.64'	64.63'	S82°05'17"W
C41	800.00'	37.39'	37.39'	S85°00'36"W
C42	5879.58'	370.34'	370.28'	N56°47'53"E



APPROVALS	
CHAIR, PLANNING AND ZONING COMMISSION	DATE _____
CHAIR, ST. CHARLES PARISH COUNCIL	DATE _____
PARISH PRESIDENT	DATE _____

**(PRELIMINARY PLAT)**  
PATIO HOMES SUBDIVISION  
ASHTON PLANTATION  
IN SECTION 8, T-13-S, R-21-E  
LULING, ST. CHARLES PARISH, LOUISIANA

<b>REVISIONS:</b> DATE: 09-11-2023 REMARKS: REV.B: MISCELLANEOUS REVISIONS AS PER ST. CHARLES PARISH DEPARTMENT OF PLANNING AND ZONING COMMENTS. 10-30-2023 REV.C: REVISIONS TO SUBDIVISION LAYOUT. 05-16-2024 REV.D: REVISED ZONING AS PER ST. CHARLES PARISH DEPARTMENT OF PLANNING AND ZONING COMMENTS.		<b>STAMP:</b> 		<b>PICCIOLA &amp; ASSOCIATES, INC.</b> CIVIL ENGINEERS NAVAL ARCHITECTS LAND SURVEYORS MARINE ENGINEERS P.O. BOX 687 CUT OFF, LOUISIANA 70345 (985) 632-9786		DATE: 07/25/2023  SCALE: AS SHOWN		<b>ASHTON PLANTATION ESTATES, LLC</b> PATIO HOMES SUBDIVISION. PLAT SHOWING REMAINING PORTION OF TRACT 11 TO BE DESIGNATED AS "TRACT 11-A" LULING, LOUISIANA ST. CHARLES PARISH, LOUISIANA		SHEET NO. 2 OF 4  REV.D	
--	--	-------------------	--	---	--	---	--	---	--	-------------------------------	--

ISSUED FOR REVIEW



**SURVEY**

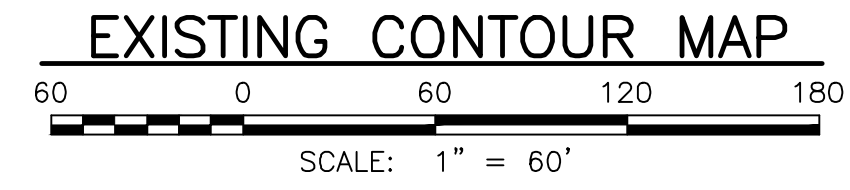
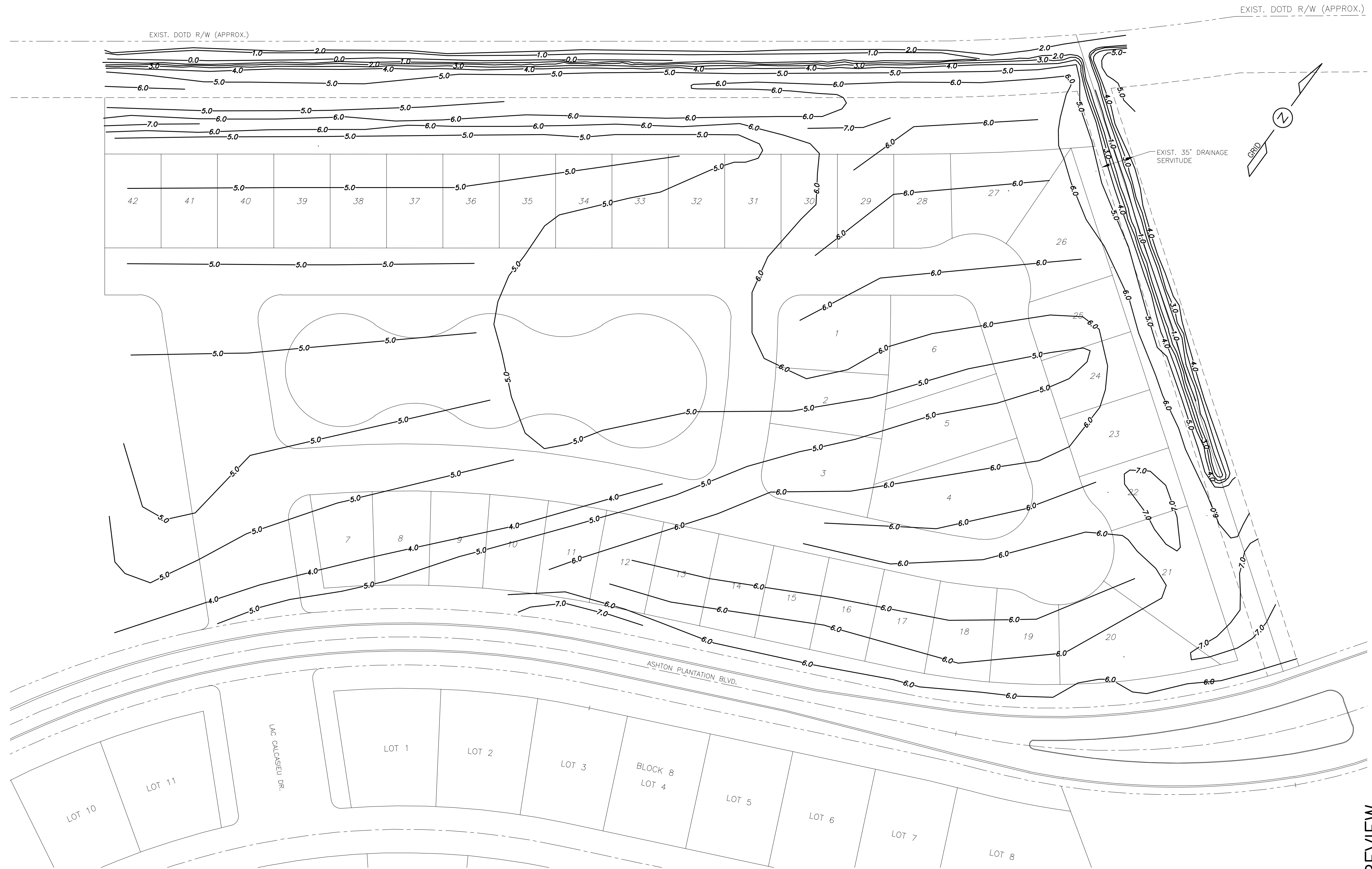
HORIZONTAL CONTROL:  
 LOUISIANA STATE PLANE  
 1702 LOUISIANA SOUTH ZONE,  
 (NAD 83 (2011) EPOCH 2010.00).  
 U.S. SURVEY FEET  
 VRS PROVIDER IS C4G.

**VERTICAL CONTROL:**

NAVD 88 (GEOID 18, REV. 11/26/19)

**SURVEY NOTES:**

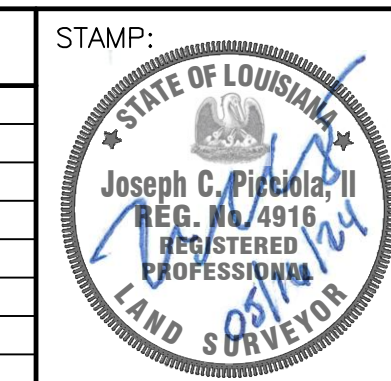
1. PROJECT SITE CONTOURS DERIVED FROM TOPOGRAPHIC SURVEYS CONDUCTED BY PICCIOLA & ASSOCIATES, INC. ON AND DRONE AERIAL SURVEY CONDUCTED BY PICCIOLA & ASSOCIATES, INC. ON JUNE 21, 2023.
2. PROJECT SITE IMAGE DERIVED FROM DRONE AERIAL PHOTOGRAPHY CONDUCTED BY PICCIOLA & ASSOCIATES, INC. ON NOVEMBER 11, 2022 AND JUNE 21, 2023.
3. CURRENT EXISTING SITE CONDITIONS MAY VARY FROM TIME OF INITIAL SURVEYS.



**(PRELIMINARY PLAT)**  
 PATIO HOMES SUBDIVISION  
 ASHTON PLANTATION  
 IN SECTION 8, T-13-S, R-21-E  
 LULING, ST. CHARLES PARISH, LOUISIANA

ISSUED FOR REVIEW

REVISIONS:	
DATE:	REMARKS:
09-11-2023	REV.B: MISCELLANEOUS REVISIONS AS PER ST. CHARLES PARISH DEPARTMENT OF PLANNING AND ZONING COMMENTS.
10-30-2023	REV.C: REVISIONS TO SUBDIVISION LAYOUT.
05-16-2024	REV.D: REVISED ZONING AS PER ST. CHARLES PARISH DEPARTMENT OF PLANNING AND ZONING COMMENTS.



**PICCIOLA & ASSOCIATES, INC.**  
 CIVIL ENGINEERS      NAVAL ARCHITECTS  
 LAND SURVEYORS      MARINE ENGINEERS

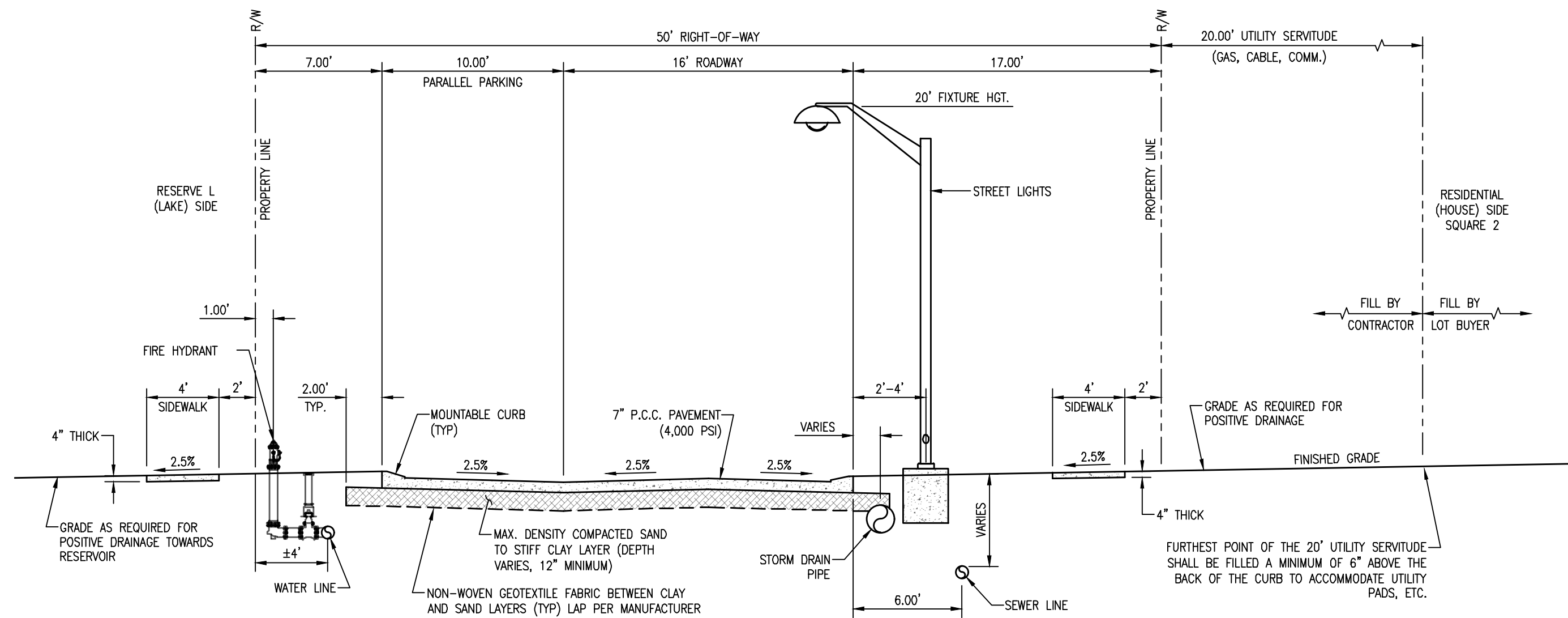
P.O. BOX 687  
 CUT OFF, LOUISIANA 70345  
 (985) 632-9766

DESIGNED BY: J.C.P.      DRAWN BY: L.J.G.      CHECKED BY: J.C.P.

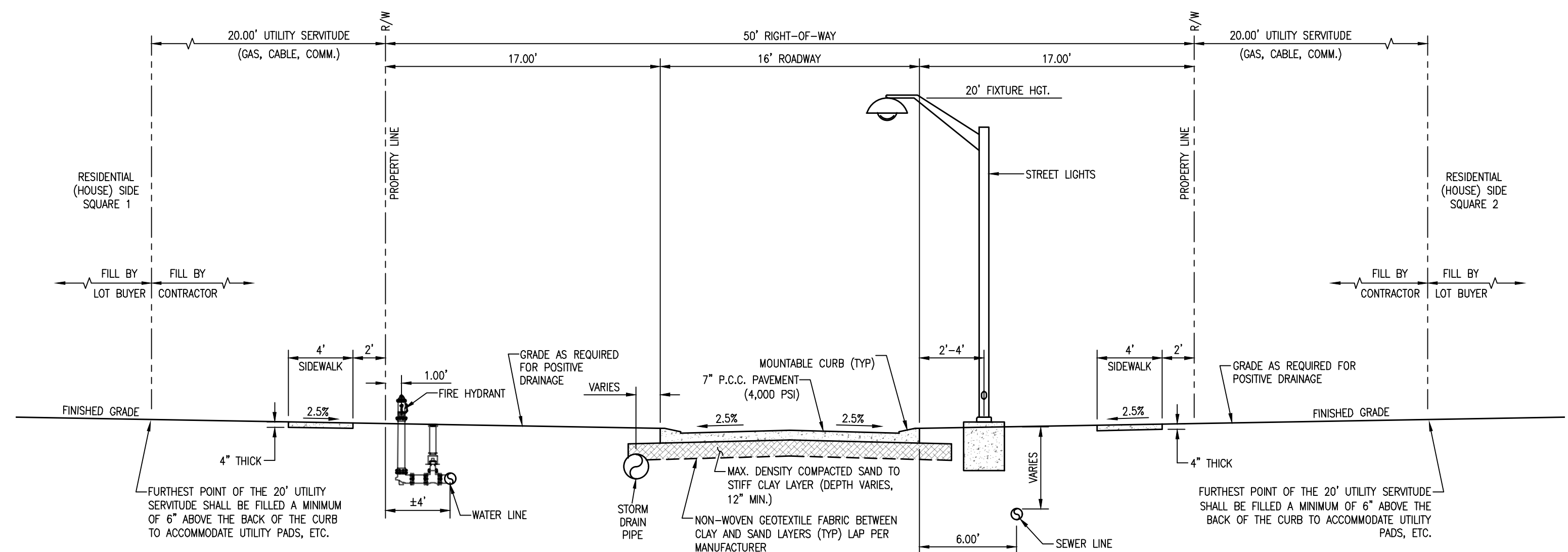
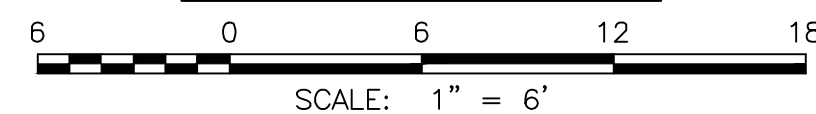
DATE:	07/25/2023
SCALE:	AS SHOWN

<b>ASHTON PLANTATION ESTATES, LLC</b>	
PATIO HOMES SUBDIVISION	
EXISTING CONTOUR MAP	
LULING, LOUISIANA	ST. CHARLES PARISH, LOUISIANA

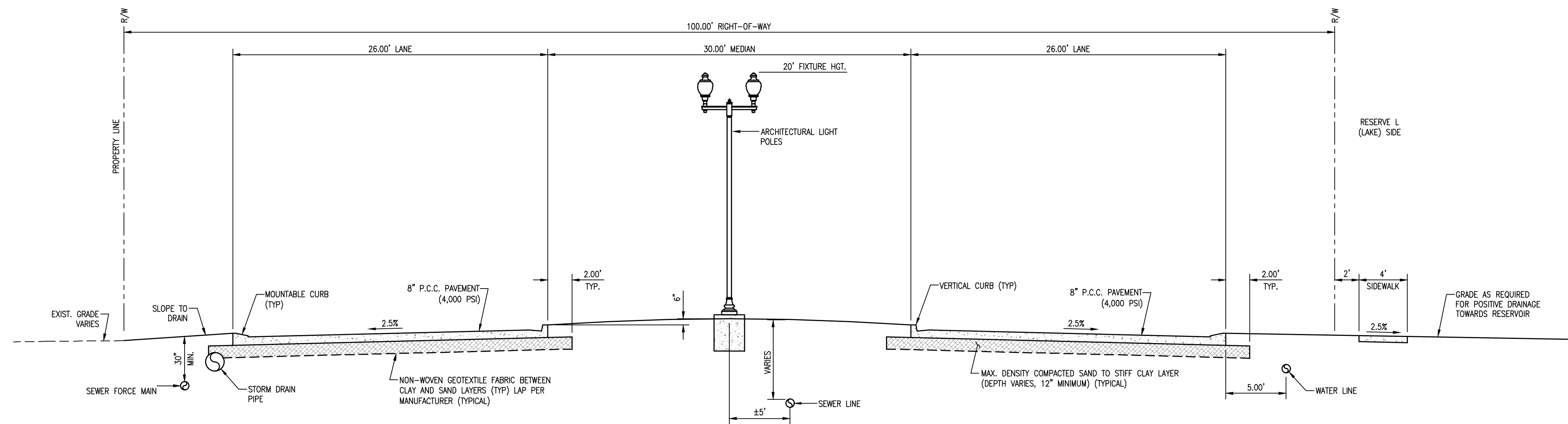
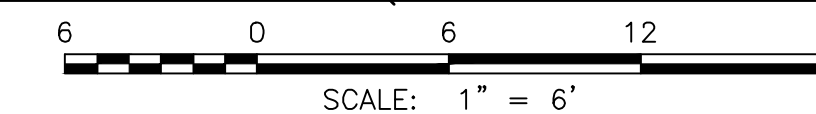
SHEET NO.	3 OF 4
REV.D	



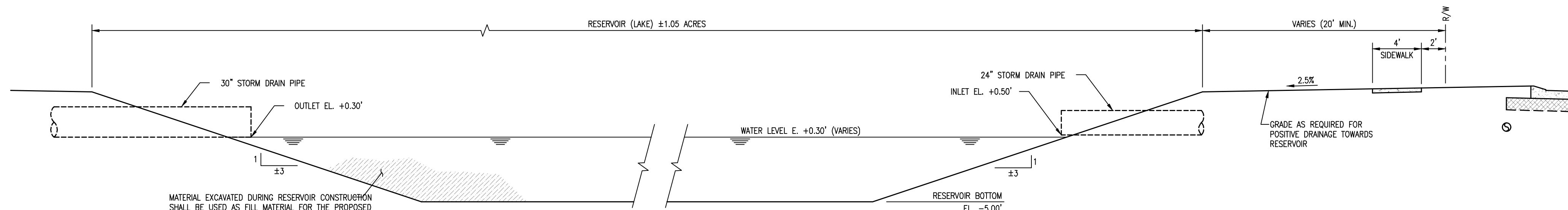
TYPICAL 50' R.O.W.



TYPICAL 50' R.O.W. (RESIDENTIAL BOTH SIDES)



TYPICAL 100' R.O.W. (BOULEVARD)

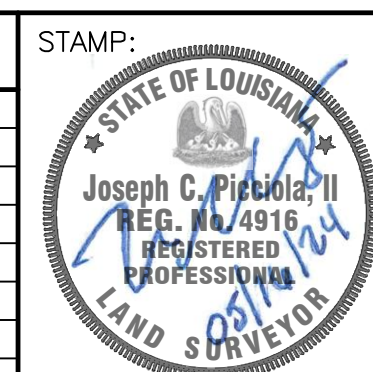


TYPICAL RESERVOIR SECTION



**(PRELIMINARY PLAT)**  
 PATIO HOMES SUBDIVISION  
 ASHTON PLANTATION  
 IN SECTION 8, T-13-S, R-21-E  
 LULING, ST. CHARLES PARISH, LOUISIANA

REVISIONS:	
DATE:	REMARKS:
08-03-2023	REV.A: MISCELLANEOUS REVISIONS AS PER OWNER'S COMMENTS.
09-11-2023	REV.B: MISCELLANEOUS REVISIONS AS PER ST. CHARLES PARISH DEPARTMENT OF PLANNING AND ZONING COMMENTS.
10-30-2023	REV.C: REVISIONS TO SUBDIVISION LAYOUT.
05-16-2024	REV.D: REVISED ZONING AS PER ST. CHARLES PARISH DEPARTMENT OF PLANNING AND ZONING COMMENTS.



**PICCIOLA & ASSOCIATES, INC.**  
 CIVIL ENGINEERS NAVAL ARCHITECTS  
 LAND SURVEYORS MARINE ENGINEERS

P.O. BOX 687  
 CUT OFF, LOUISIANA 70345  
 (985) 632-5785

DESIGNED BY: J.C.P.  
 DRAWN BY: L.J.G.  
 CHECKED BY: J.C.P.

DATE:	07/25/2023
SCALE:	AS SHOWN

ASHTON PLANTATION ESTATES, LLC	
PATIO HOMES SUBDIVISION.	
TYPICAL R.O.W. SECTIONS	
LULING, LOUISIANA	ST. CHARLES PARISH, LOUISIANA

SHEET NO.	4 OF 4
REV.D	