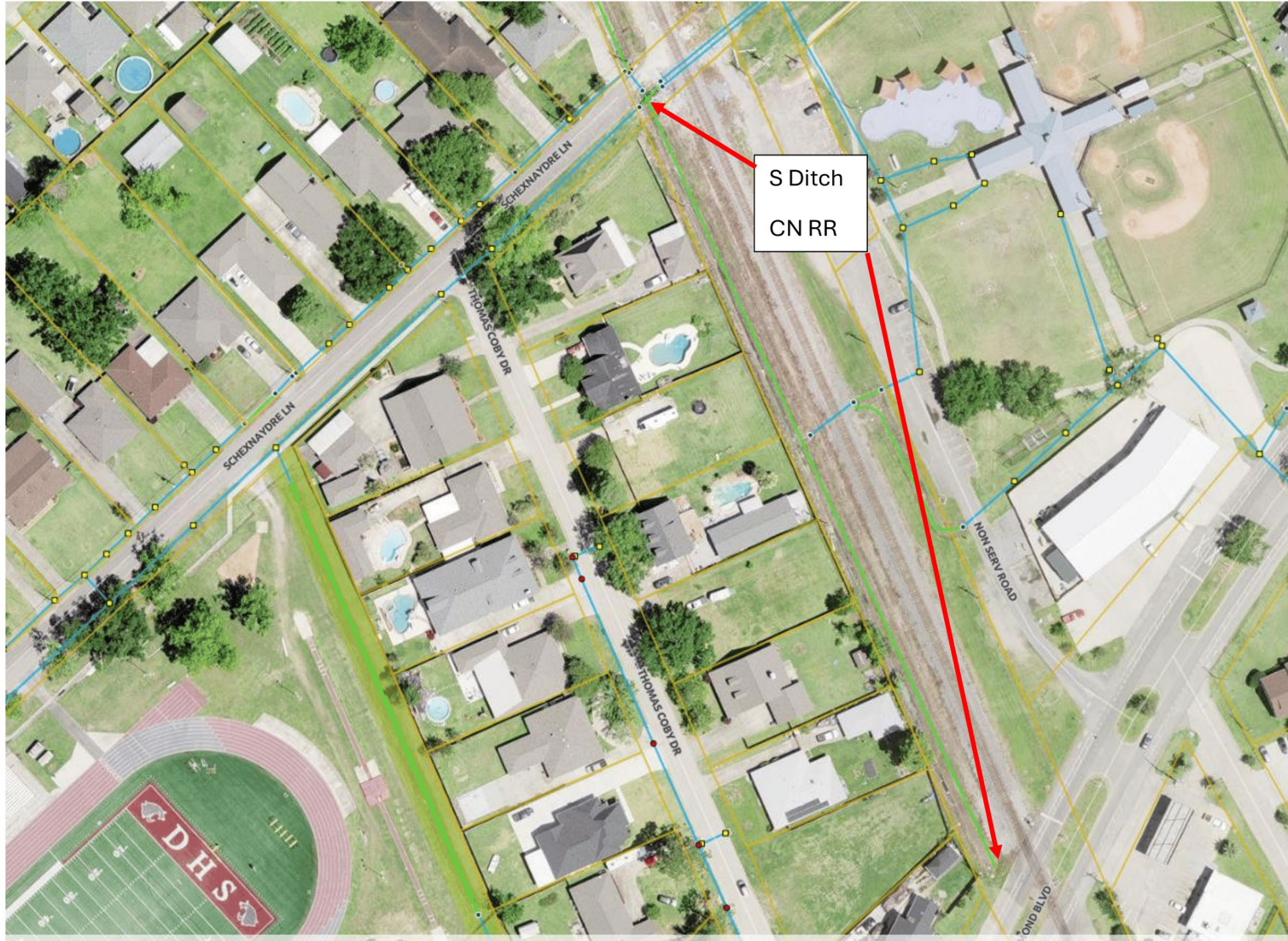


Ditch Conditions along CN RR Along Thomas Coby - Complaints received regarding maintenance

This ditch borders the south side of CN RR between Schexnaydre Lane and Ormond Blvd

- Recent Work Order - overgrown
- Recently cleared
- How accomplished? Is clearing in ditches along RR by parish equipment possible like DHS ditch?





Clearing
requested
WO 6-12-24
(Before)



Cleared 9-25-24

(After)

This is the
condition
of same ditch

1-20-19



A local resident asked why RR ditch can't look like the recently cleared DHS ditch (good job PW, by the way).

Is resident expectation realistic along the tracks?
How difficult would that be?

