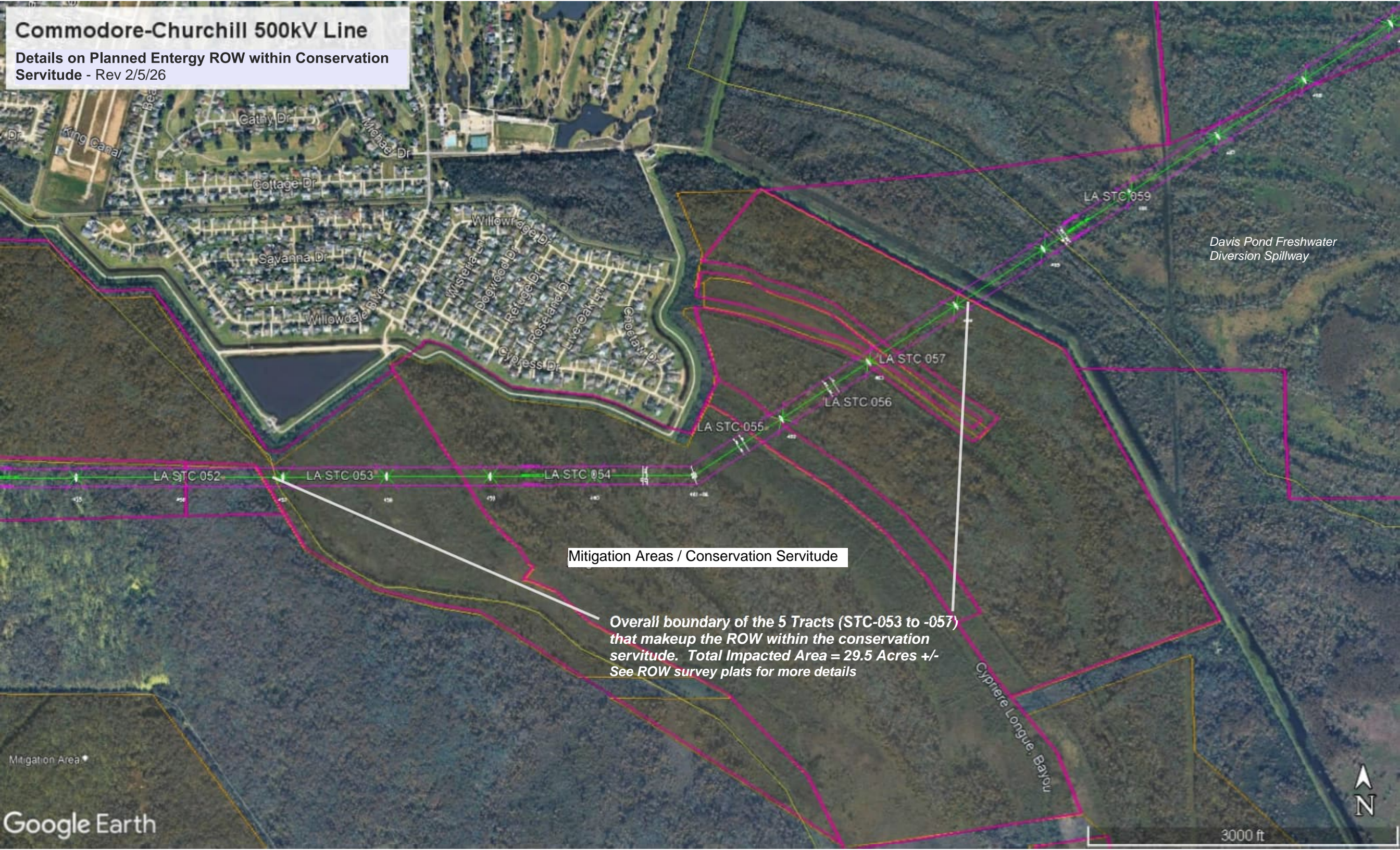


Commodore-Churchill 500kV Line

Details on Planned Energy ROW within Conservation Servitude - Rev 2/5/26



Mitigation Areas / Conservation Servitude

Overall boundary of the 5 Tracts (STC-053 to -057) that makeup the ROW within the conservation servitude. Total Impacted Area = 29.5 Acres +/- See ROW survey plats for more details

Davis Pond Freshwater Diversion Spillway

Cypriere Longue Bayou

