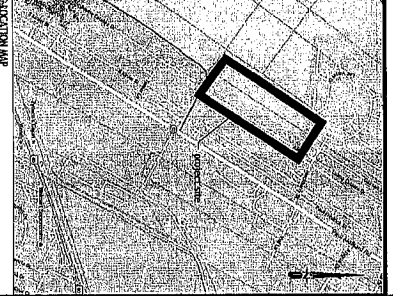
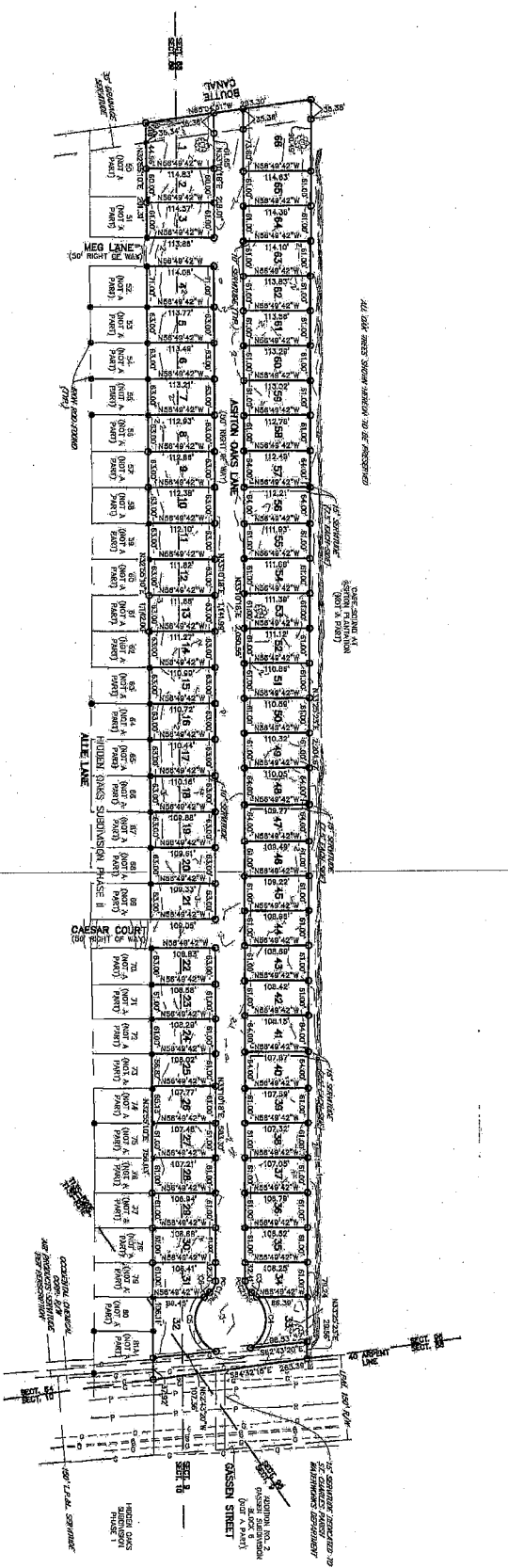
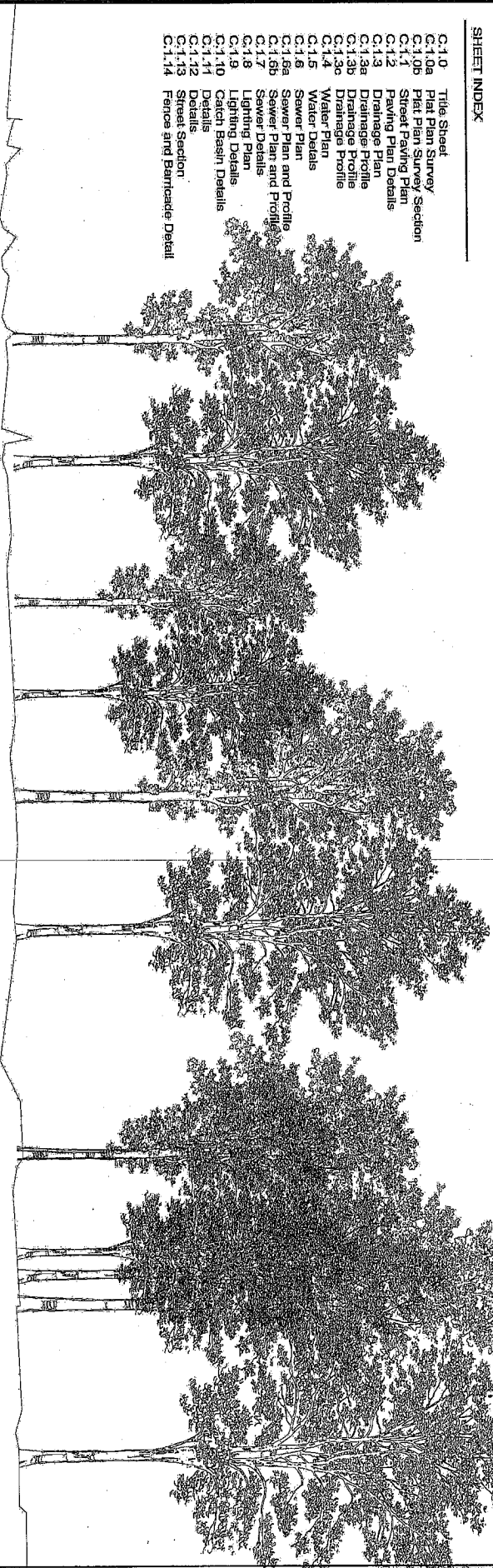


ASHTON OAKS SUBDIVISION

SHEET INDEX

- C.1.0 Title Sheet
- C.1.0a Plat Plan Survey
- C.1.0b Plat Plan Survey Section
- C.1.1 Street Paving Plan
- C.1.2 Fencing Plan Details
- C.1.3 Drainage Plan
- C.1.3a Drainage Profile
- C.1.3b Drainage Profile
- C.1.4 Water Plan
- C.1.5 Water Details
- C.1.6 Sewer Plan
- C.1.6a Sewer Plan and Profile
- C.1.6b Sewer Plan and Profile
- C.1.7 Sewer Details
- C.1.8 Lighting Plan
- C.1.9 Catch Basin Details
- C.1.10 Details
- C.1.11 Details
- C.1.12 Details
- C.1.13 Street Section
- C.1.14 Fence and Barricade Detail



MURRAY ARCHITECTS

2821 Ridgeway Road, Metairie, LA 70002
 Ph: (504)885-1480 Fax: (504)885-1497

STRUCTURAL ENGINEERS

WILKINSON ENGINEERS

2821 Ridgeway Road, Metairie, LA 70002
 Ph: (504)885-1480 Fax: (504)885-1497

| No. | Description | Date |
|-----|-------------|------|
| 1 | | |
| 2 | | |
| 3 | | |
| 4 | | |
| 5 | | |

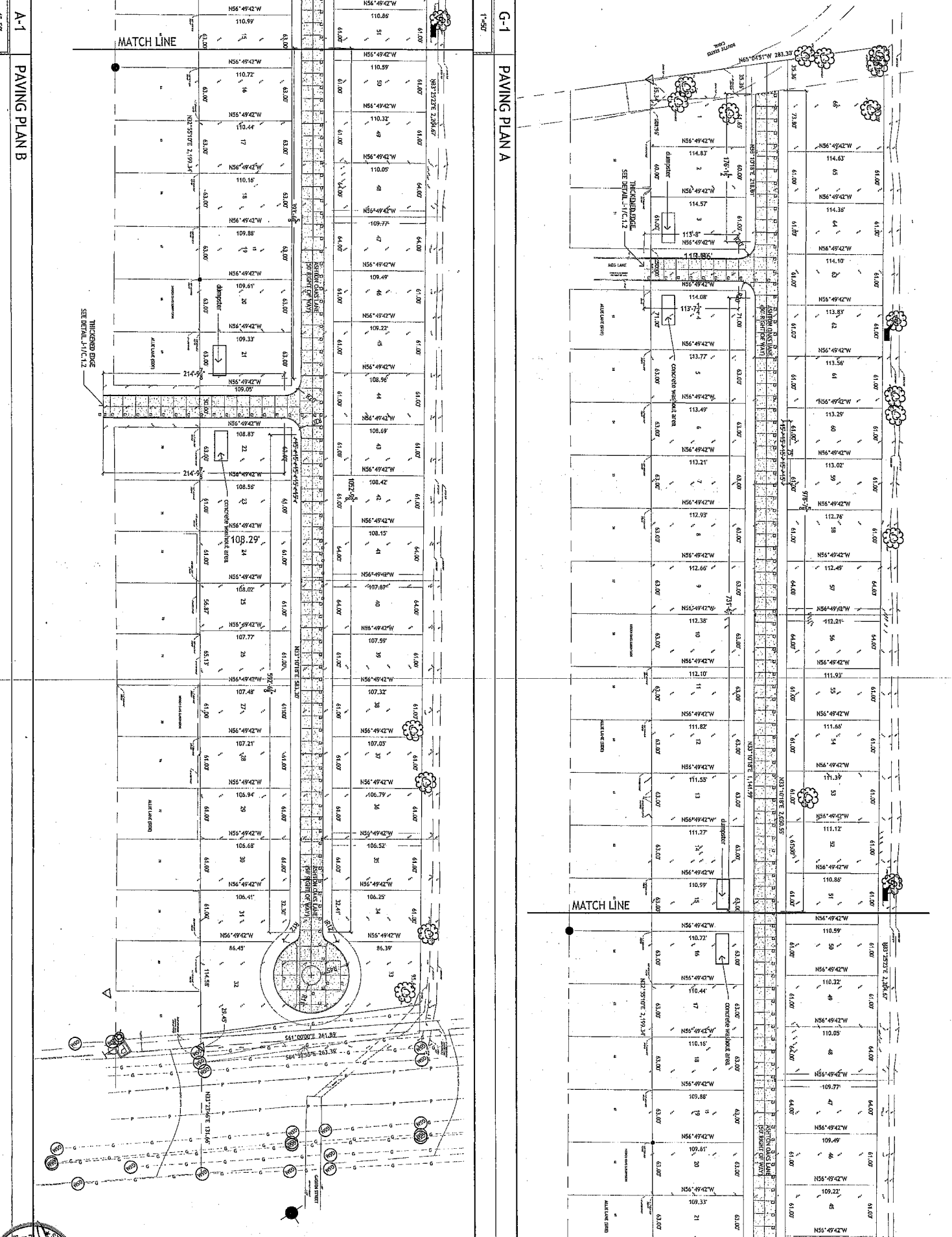
ASHTON OAKS SUBDIVISION
PHASE 3

STATE OF LOUISIANA
 PROFESSIONAL ENGINEER
 IN 7/19/00

C.1.0

THIS DRAWING AND THE INFORMATION CONTAINED HEREIN ARE THE PROPERTY OF THE ARCHITECT. NO PART SHALL BE REPRODUCED OR TRANSMITTED IN ANY FORM OR BY ANY MEANS, ELECTRONIC OR MECHANICAL, INCLUDING PHOTOCOPYING, RECORDING, OR BY ANY INFORMATION STORAGE AND RETRIEVAL SYSTEM, WITHOUT THE WRITTEN PERMISSION OF THE ARCHITECT. THE ARCHITECT'S LIABILITY IS LIMITED TO THE PROFESSIONAL AND TECHNICAL SERVICES PROVIDED BY THE ARCHITECT. THE ARCHITECT DOES NOT WARRANT THE ACCURACY OF THE INFORMATION CONTAINED HEREIN. THE ARCHITECT'S LIABILITY IS LIMITED TO THE PROFESSIONAL AND TECHNICAL SERVICES PROVIDED BY THE ARCHITECT.

Copyright © 2016
 THESE DOCUMENTS ARE PROTECTED BY UNITED STATES GOVERNMENT LAW. THEY HAVE BEEN PREPARED SPECIFICALLY FOR THE PROJECT IDENTIFIED AND ARE NOT INTENDED TO BE REPRODUCED OR TRANSMITTED IN ANY FORM OR BY ANY MEANS WITHOUT PERMISSION FROM THE ARCHITECT. ANY REPRODUCTION OR TRANSMISSION OF THESE DOCUMENTS WITHOUT THE WRITTEN PERMISSION OF THE ARCHITECT IS PROHIBITED.



- NOTES:
1. FOR CONTROL JOINT DETAILS SEE DETAIL J5/C.1.2
 2. FOR EXPANSION JOINT DETAILS SEE DETAIL J9/C.1.2
 3. FOR THICKENED EDGE DETAIL SEE DETAIL J1/C.1.2
 4. FOR THICKENED EDGE DETAIL SEE DETAIL J1/C.1.2
 5. FOR THICKENED EDGE DETAIL AT CURB SEE DETAIL J3/C.1.2

Dumpster and Washroom area may need to be adjusted with sequence of work
 Contractor shall not be allowed to move, but American
 debris must be disposed in an Louisiana EDC approved landfill.
 Materials which contain asbestos must comply with air pollution
 regulations.
 No petroleum based and concrete curing compound shall be
 used on this project.

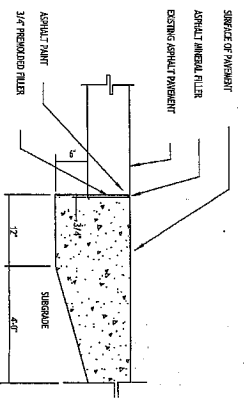


MURRAY
 ARCHITECTS
 1370 River Road
 Metairie, LA 70002
 Tel: (504) 885-8888
 Fax: (504) 885-8889

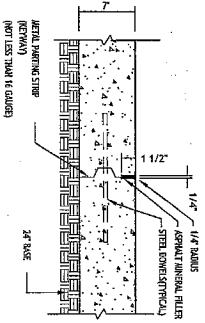
ASHTON OAKS SUBDIVISION
 PHASE 3



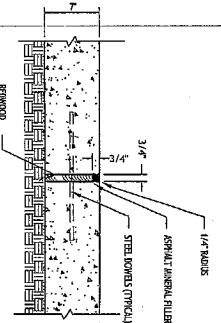
C.1.1



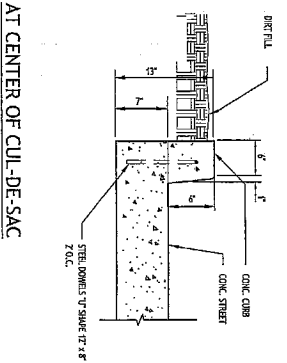
J-1 THICKENED EDGE DETAIL
1-1/2" x 1'-0"



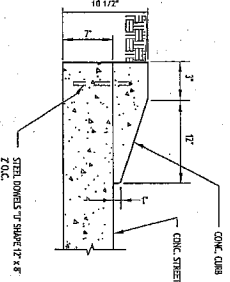
J-5 TRANSVERSE CONTRACTION JOINT
1-1/2" x 1'-0"



J-9 TRANSVERSE EXPANSION JOINT
1-1/2" x 1'-0"



J-13 CURB PROFILE
AT CUL-DE-SAC
1-1/2" x 1'-0"



E-13 ROLL OVER CURB PROFILE
1-1/2" x 1'-0"

NOTES:

GENERAL

1. THE TESTING LABORATORY SHALL BE SELECTED BY THE CONTRACTOR.
2. ALL WORK MUST CONFORM TO THE REQUIREMENTS OF THE SPECIFICATIONS FOR ST. CHARLES PARISH, AND THE STATE OF LOUISIANA, AND THE REQUIREMENTS OF THE CONTRACT DOCUMENTS AND ADDENDUMS.
3. CONSTRUCTION SHALL BE IN ACCORDANCE WITH THE CONTRACT DOCUMENTS AND ADDENDUMS.

PAVEMENT

1. UNLESS OTHERWISE SPECIFIED, ALL PAVEMENT SHALL BE 7" THICK.
2. CONCRETE SHALL BE PLACED AT A MINIMUM COMPRESSIVE STRENGTH OF 4000 PSI IN 28 DAYS AND SHALL BE CURED WITH A WATER REDUCING ADMIXTURE AND SHALL HAVE A MINIMUM SLUMP OF 4".
3. THE CONTRACTOR SHALL SUBMIT THE PROPOSED CONCRETE MIX DESIGN TO THE ENGINEER FOR APPROVAL. NO CONCRETE SHALL BE PLACED UNTIL THE MIX DESIGN HAS BEEN APPROVED IN WRITING.
4. IF CONCRETE TEMPERATURE MEASURED AT THE POINT OF DISCHARGE EXCEEDS 90° F AT THE TIME OF PLACEMENT, A WATER REDUCING ADMIXTURE, AS SET FORTH IN THE SPECIFICATIONS, SHALL BE ADDED TO THE MIX.
5. CONCRETE, WHEN ITS TEMPERATURE AT THE TIME OF PLACEMENT IS 90° F OR HIGHER, OR CONCRETE NOT DEPOSITED WITHIN 1 1/2 HOURS, AFTER THE INITIAL PLACEMENT OF THE FORMWORK, SHALL BE PROTECTED AND NOT BE EXPOSED.
6. PAVEMENT SHALL NOT BE OPEN TO TRAFFIC UNTIL 21 DAYS AFTER PLACEMENT WITHOUT APPROVAL OF THE ENGINEER.
7. ALL PAVEMENT SHALL HAVE ONE LONGITUDINAL JOINT, LOCATED 13.5' FROM EACH END OF THE SECTION.
8. PAVEMENT SHALL BE PLACED IN A MINIMUM OF 4" LIFTS OR BETTER (COMMON PRACTICE) 75% STANDARD PRODUCTION PRACTICE.
9. SUB BASE MATERIAL SHALL CONSIST OF A MINIMUM OF 3" OF AGGREGATE 3/8" OR BETTER (COMMON PRACTICE) 75% STANDARD PRODUCTION PRACTICE.
10. TRANSVERSE EXPANSION JOINTS SHALL BE SPACED AT 75' ON CENTER.
11. TRANSVERSE CONTRACTION JOINTS SHALL BE SPACED TO EQUAL SPACES FROM 75' FEET.

A-1 NOTES

1-1/2" x 1'-0"

Copyright © 2008 by the State of Louisiana. All rights reserved. This document is protected by United States Copyright Law. It has been prepared specifically for the project identified and is not to be used for any other project or at any other location without the express written approval of the State of Louisiana. The reproduction of these documents without the approval of the State of Louisiana is prohibited. All rights reserved.

**ASHTON OAKS SUBDIVISION
PHASE 3**

C.1.2

1750 River Road
Bossier Parish, LA 70602
Tel: (504) 794-9150
Fax: (504) 723-0142

**MURRAY
Architects**

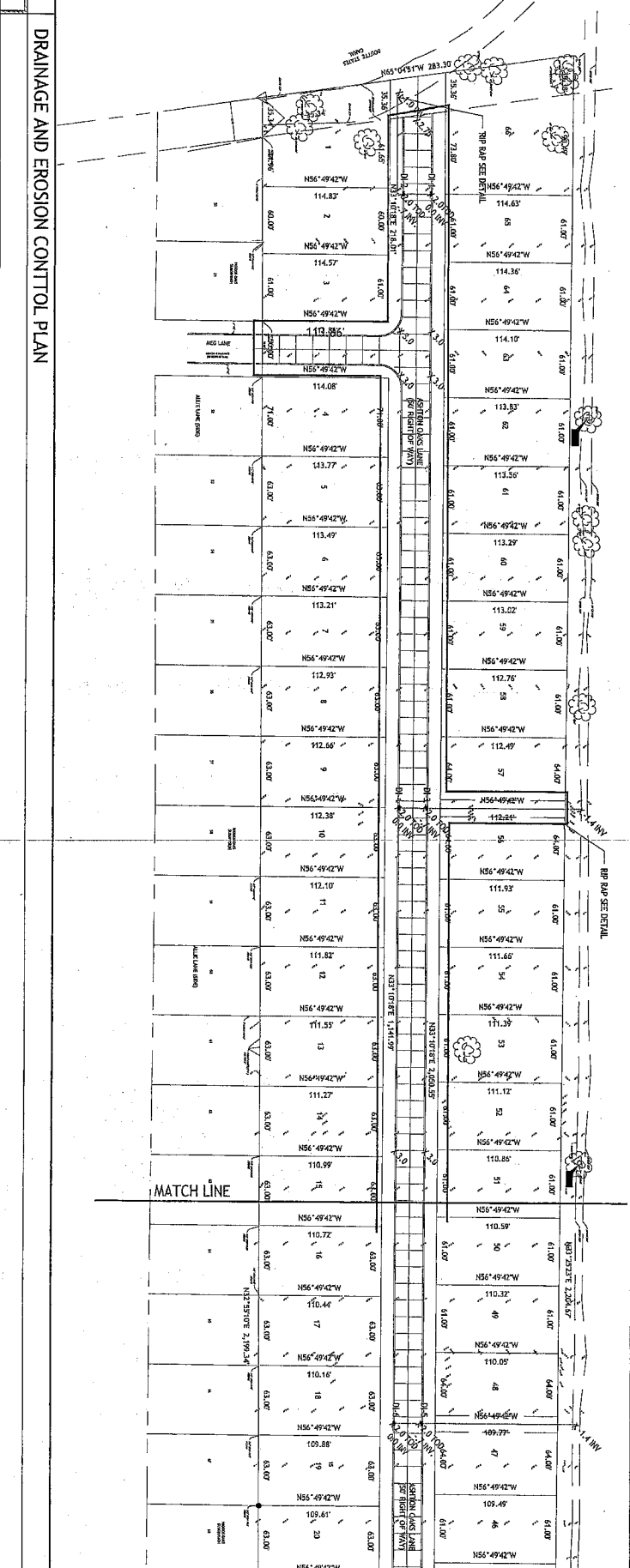
3601 Ridgeland Drive, Metairie, LA 70002
Ph: (504) 885-1490 Fax: (504) 885-1481

**STATE OF LOUISIANA
ENGINEERING**

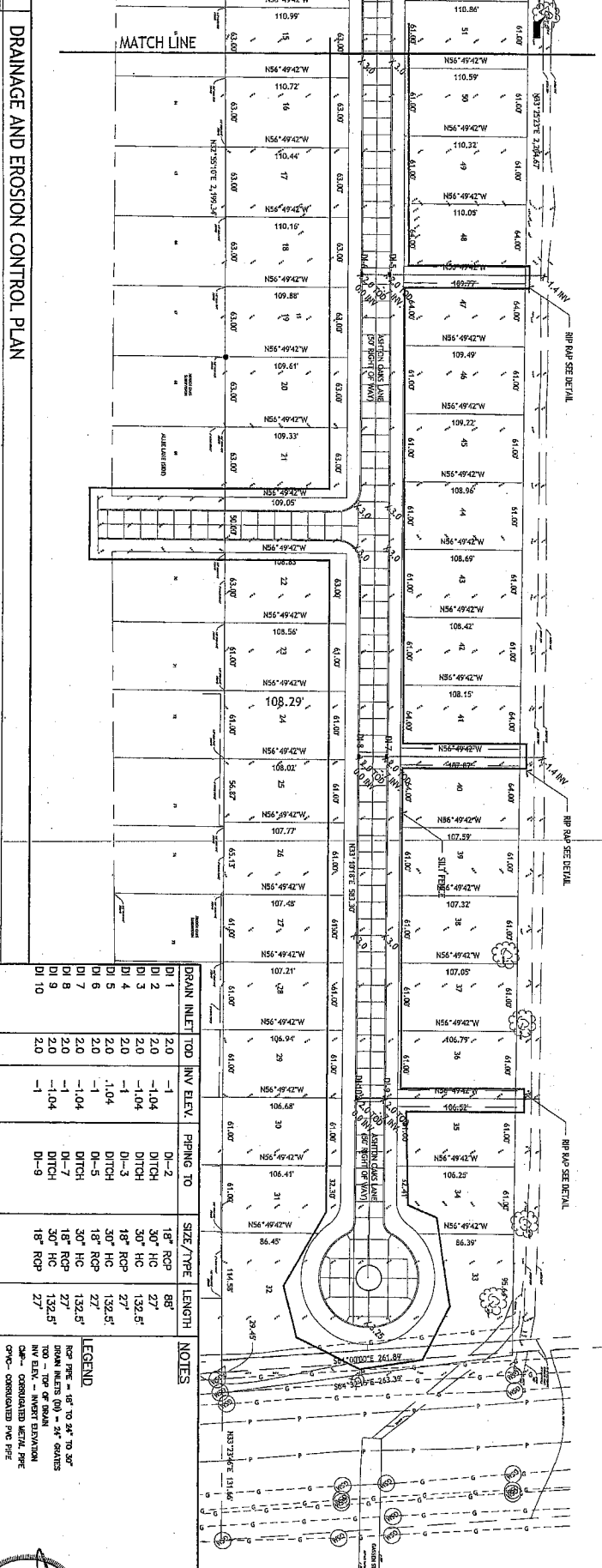
Professional Engineer
No. 10000
Exp. 12/31/16

CONTRACTOR: THESE REGULATIONS ARE PROTECTED BY UNITED STATES COPYRIGHT LAW. THEY HAVE BEEN PREPARED SPECIFICALLY FOR THESE REGULATIONS AND ARE NOT TO BE REPRODUCED OR TRANSMITTED IN ANY FORM OR BY ANY MEANS, ELECTRONIC OR MECHANICAL, INCLUDING PHOTOCOPYING, RECORDING, OR BY ANY INFORMATION STORAGE AND RETRIEVAL SYSTEM, WITHOUT THE EXPRESS WRITTEN PERMISSION AND PARTICIPATION OF HARRAY ARCHITECTS. REPRODUCTION OF THESE DOCUMENTS MUST BE AUTHORIZED BY THE ARCHITECT. ALL RIGHTS ARE RESERVED TO HARRAY ARCHITECTS.

G-1
DRAINAGE AND EROSION CONTROL PLAN



A-1
DRAINAGE AND EROSION CONTROL PLAN



| DRAIN INLET | TOP | INV. ELEV. | PIPING TO | SIZE/TYPE | LENGTH |
|-------------|-----|------------|-----------|-----------|--------|
| DI 1 | 2.0 | -1 | DI-2 | 18" ROP | 88' |
| DI 2 | 2.0 | -1.04 | DITCH | 30" HC | 27' |
| DI 3 | 2.0 | -1.04 | DITCH | 30" HC | 132.5' |
| DI 4 | 2.0 | -1 | DI-3 | 18" ROP | 27' |
| DI 5 | 2.0 | 1.04 | DITCH | 30" HC | 132.5' |
| DI 6 | 2.0 | -1 | DI-5 | 18" ROP | 27' |
| DI 7 | 2.0 | -1.04 | DITCH | 30" HC | 132.5' |
| DI 8 | 2.0 | -1 | DI-7 | 18" ROP | 27' |
| DI 9 | 2.0 | -1.04 | DITCH | 30" HC | 132.5' |
| DI 10 | 2.0 | -1 | DI-9 | 18" ROP | 27' |

NOTES

1. ROP PIPE - 18" TO 30" TO 30'

2. ROP INLETS (DI) - 24" SQUARE

3. INV. ELEV. - INVERT ELEVATION

4. CHB - CORRUGATED METAL PIPE

5. CWP - CORRUGATED PVC PIPE

6. HC - HAWK COR PIPE

LEGEND

ROP PIPE - 18" TO 30" TO 30'

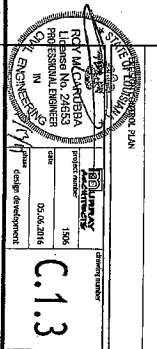
ROP INLETS (DI) - 24" SQUARE

INV. ELEV. - INVERT ELEVATION

CHB - CORRUGATED METAL PIPE

CWP - CORRUGATED PVC PIPE

HC - HAWK COR PIPE



ASHTON OAKS SUBDIVISION
PHASE 3

HARRAY ARCHITECTS

3022 Ridgeway Drive, Metairie, LA 70002
Ph: (504) 885-1991 Fax: (504) 885-1991

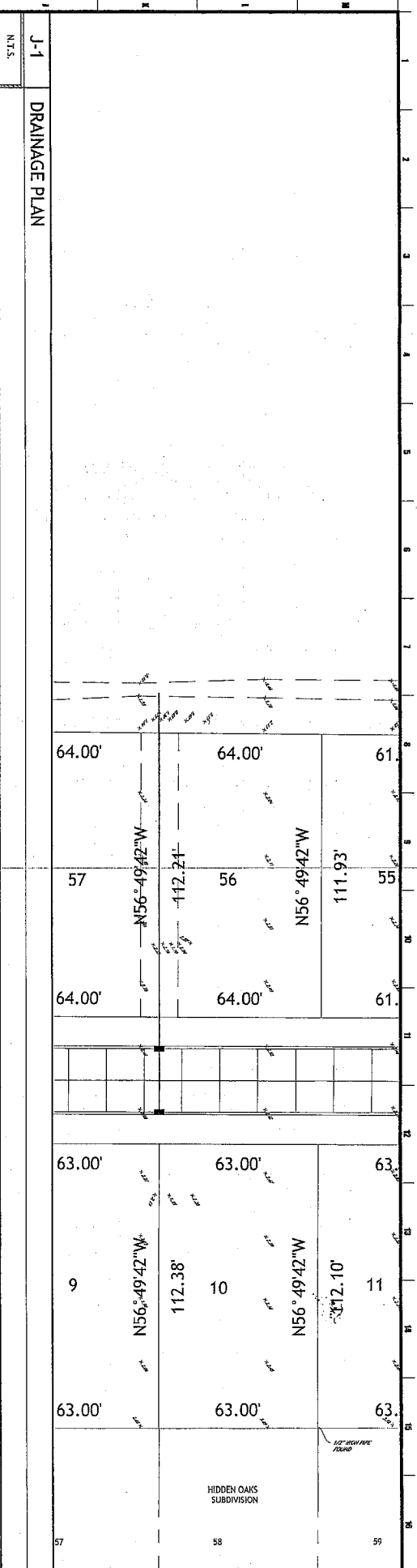
RAY M. CARROLL
Professional Engineer
License No. 24653
State of Louisiana

STRUCTURAL CONSULTANTS

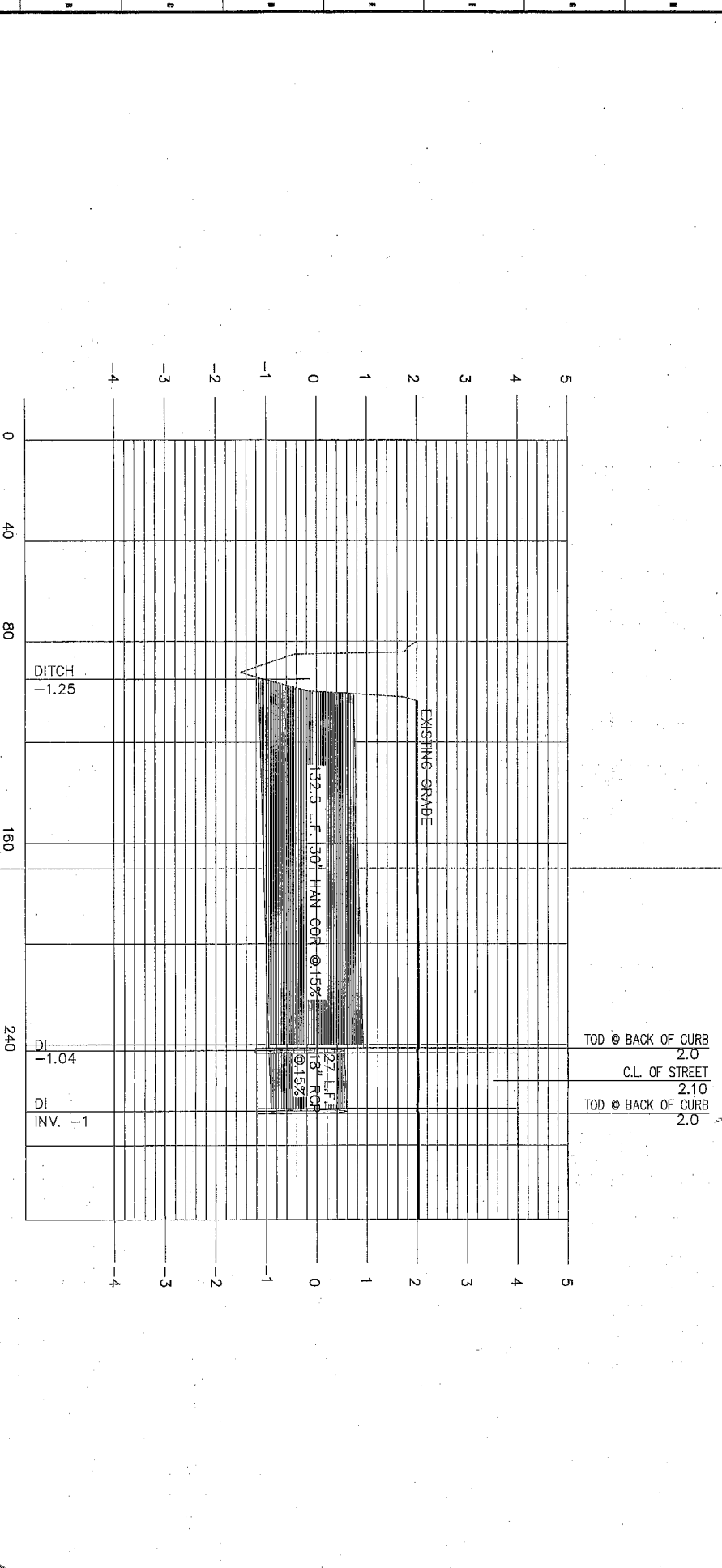
3022 Ridgeway Drive, Metairie, LA 70002
Ph: (504) 885-1991 Fax: (504) 885-1991

C.1.3

COPYRIGHT
 THESE DOCUMENTS ARE PROTECTED BY UNITED STATES COPYRIGHT LAW. THEY HAVE BEEN PREPARED SPECIFICALLY FOR
 THE CLIENT AND ARE NOT TO BE REPRODUCED OR TRANSMITTED IN ANY FORM OR BY ANY MEANS, ELECTRONIC OR MECHANICAL,
 INCLUDING PHOTOCOPYING, RECORDING, OR BY ANY INFORMATION STORAGE AND RETRIEVAL SYSTEM, WITHOUT THE EXPRESS WRITTEN APPROVAL AND PERMISSION OF JERRY ARCHITECTS. REPRODUCTION OF THESE
 DOCUMENTS WITHOUT THE WRITTEN PERMISSION OF JERRY ARCHITECTS IS PROHIBITED. ALL RIGHTS ARE RESERVED TO JERRY ARCHITECTS.



J-1
 N.T.S.
 DRAINAGE PLAN



A-1
 N.T.S.
 PROFILE

PLANNING AND ENGINEERING
 1375 S. W. 10TH AVE.
 MIAMI, FL 33135
 (305) 251-1111
 www.jerryarchitects.com

JERRY ARCHITECTS
 PROFESSIONAL ENGINEERS
 LICENSE NO. 26553
 06.06.2011

ASHTON OAKS SUBDIVISION
 PHASE 3

C.1.3a

| NO. | REVISION | DATE |
|-----|----------|------|
| 1 | | |
| 2 | | |
| 3 | | |
| 4 | | |
| 5 | | |
| 6 | | |

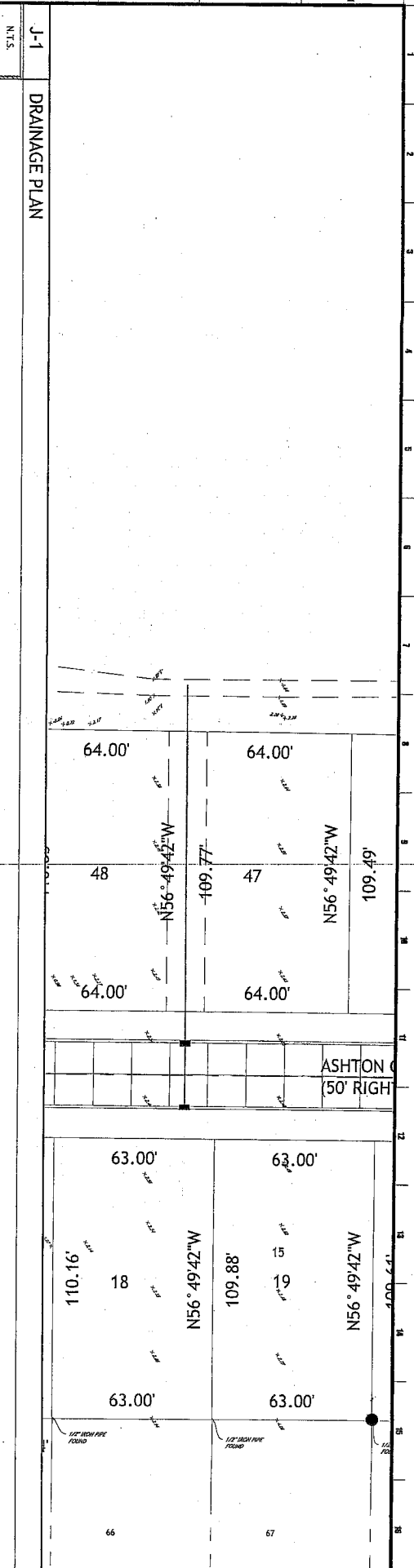
JERRY ARCHITECTS
 ARCHITECTS

1375 S.W. 10th Ave.
 Suite 100
 Miami, FL 33135
 (305) 744-7225
 Fax (305) 725-0182

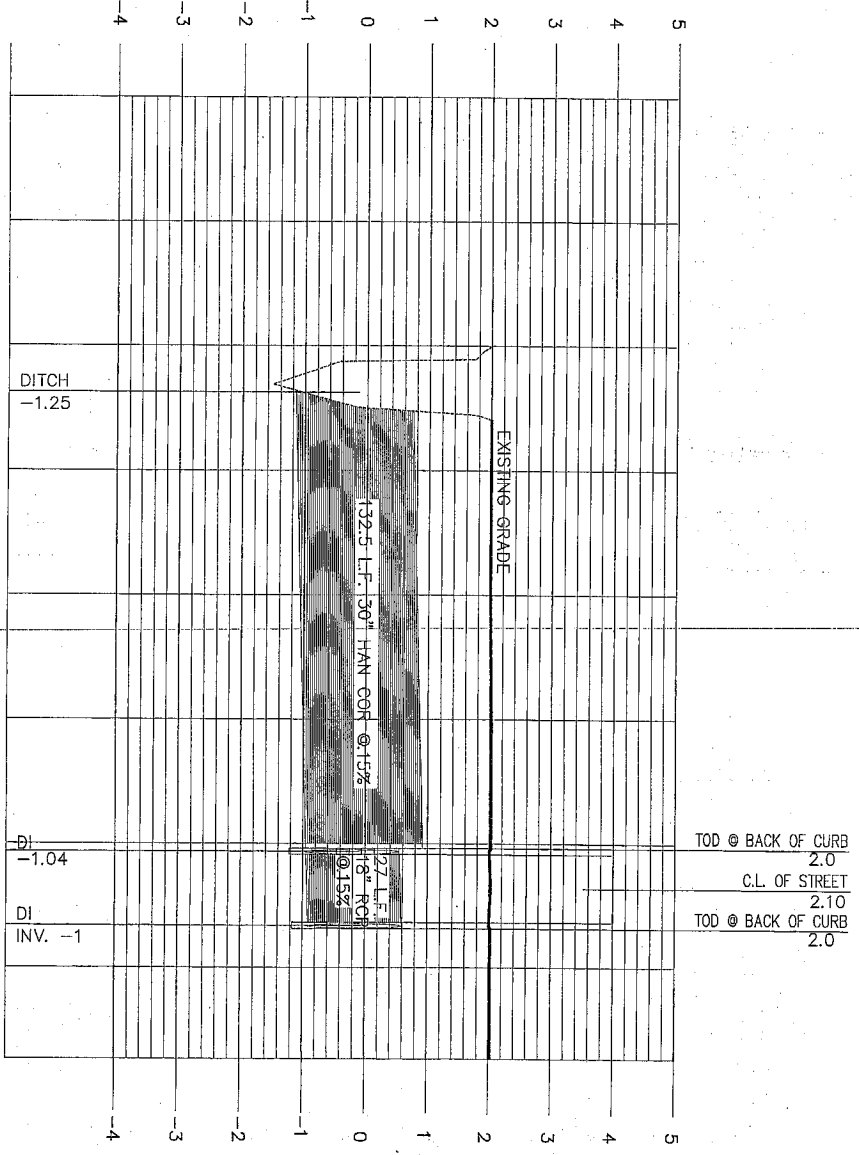
CENTRO-VIA
 STREET &
 INTERCHANGE

3621 Ridgewood Drive, Metairie, LA 70002
 Ph: (504) 885-1480 Fax: (504) 885-1481

THESE DOCUMENTS ARE PROTECTED BY UNITED STATES COPYRIGHT LAW. THEY HAVE BEEN PREPARED SPECIALLY FOR THE PROJECT DESCRIBED AND ARE NOT TO BE REPRODUCED OR TRANSMITTED IN ANY FORM OR BY ANY MEANS WITHOUT THE WRITTEN PERMISSION AND PARTICIPATION OF THE ENGINEER. ANY REPRODUCTION OR TRANSMISSION OF THESE DOCUMENTS WITHOUT THE AUTHORITY OF THE ENGINEER IS PROHIBITED. ALL RIGHTS ARE RESERVED TO THE ENGINEER.



J-1 DRAINAGE PLAN
N.T.S.



A-1 PROFILE
N.T.S.



ASHTON OAKS SUBDIVISION
PHASE 3

DATE: 06/06/2016
DESIGN: design development

C.1.3b

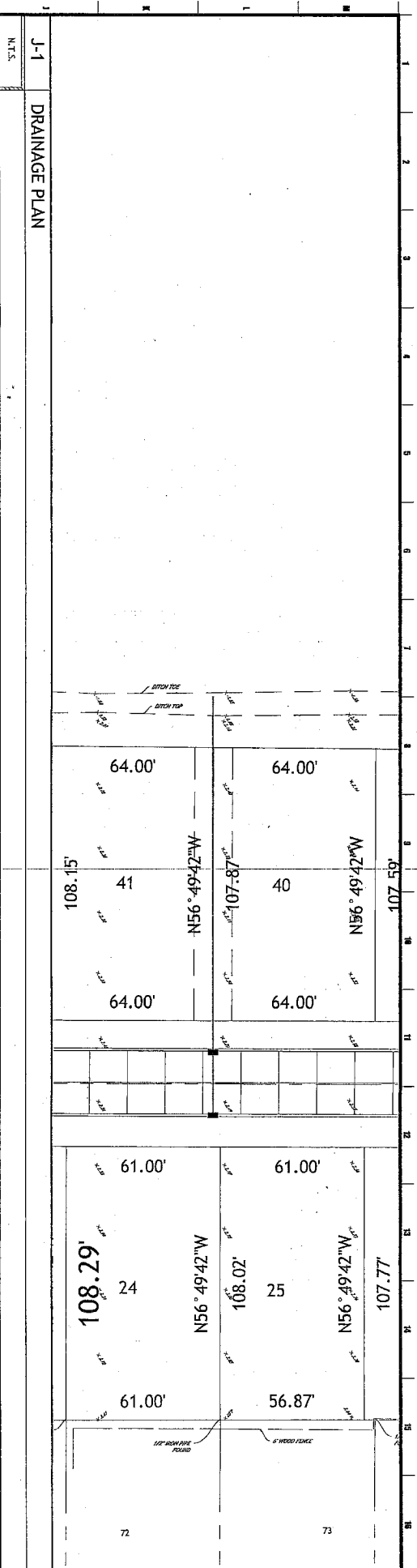
MURRAY
ARCHITECTS

2816 - 222 52nd Street
Metairie, LA 70002
504-885-1111

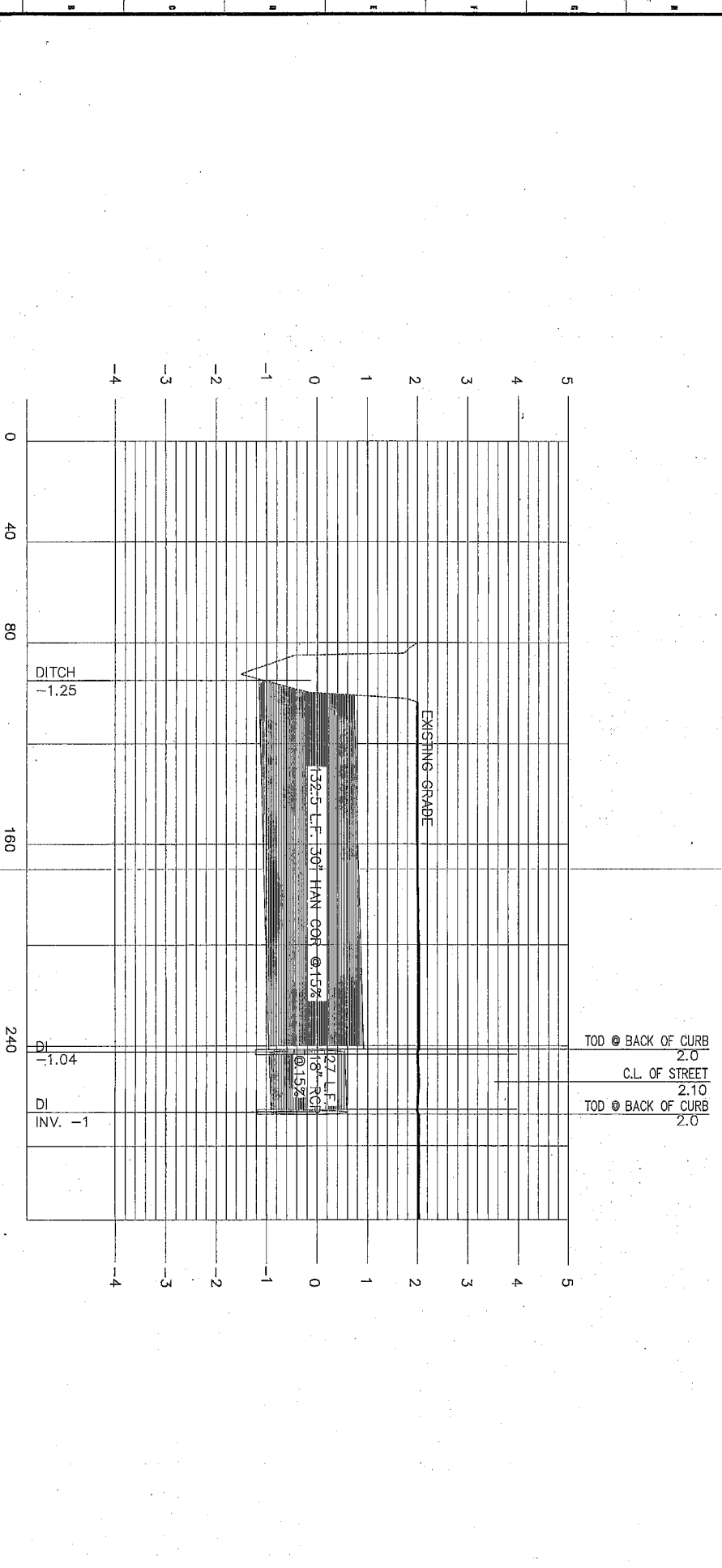
3271 Ridgeland Drive, Metairie, LA 70002
PH. (504) 885-1180 FAX (504) 885-1181

STRUCTURAL
ARCHITECTURE
INTERIORS

Copyright © 2011 by the State of Louisiana. All rights reserved. This document is the property of the State of Louisiana and is not to be reproduced, stored in a retrieval system, or transmitted in any form or by any means, electronic, mechanical, photocopying, recording, or by any information storage and retrieval system, without the prior written permission of the State of Louisiana. All rights are reserved to the State of Louisiana.



J-1 DRAINAGE PLAN



A-1 PROFILE

N.T.S.

STATE OF LOUISIANA
 PROFESSIONAL ENGINEER
 RYAN W. GARDNER
 License No. 24633
 06.06.2011
 1/17

RAIN AND TYPICAL SHEET

| | | |
|-----|----------|------|
| NO. | REVISION | DATE |
| 1 | | |
| 2 | | |
| 3 | | |
| 4 | | |
| 5 | | |
| 6 | | |

ASHTON OAKS SUBDIVISION
 PHASE 3

MURRAY
 Architects

13765 River Road
 Baton Rouge, LA 70802
 (850) 744-7275
 Fax: (850) 725-0482

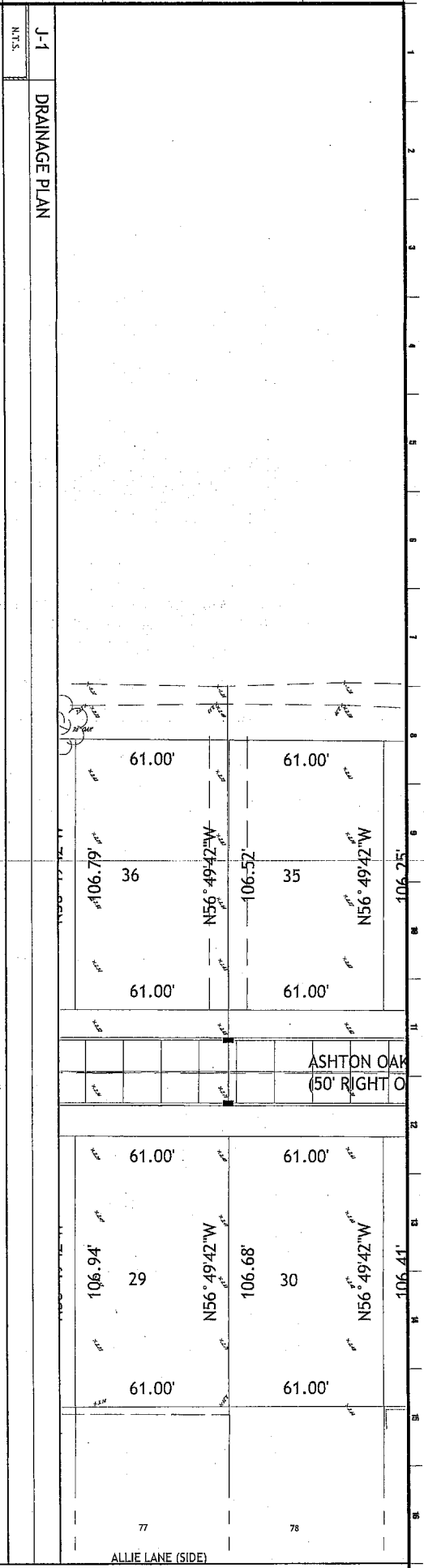
GENERAL CONTRACTOR
MURRAY
 CONSTRUCTION

3621 Riverdale Drive, Metairie, LA 70002
 Ph: (504)998-1490 Fax: (504)998-1491

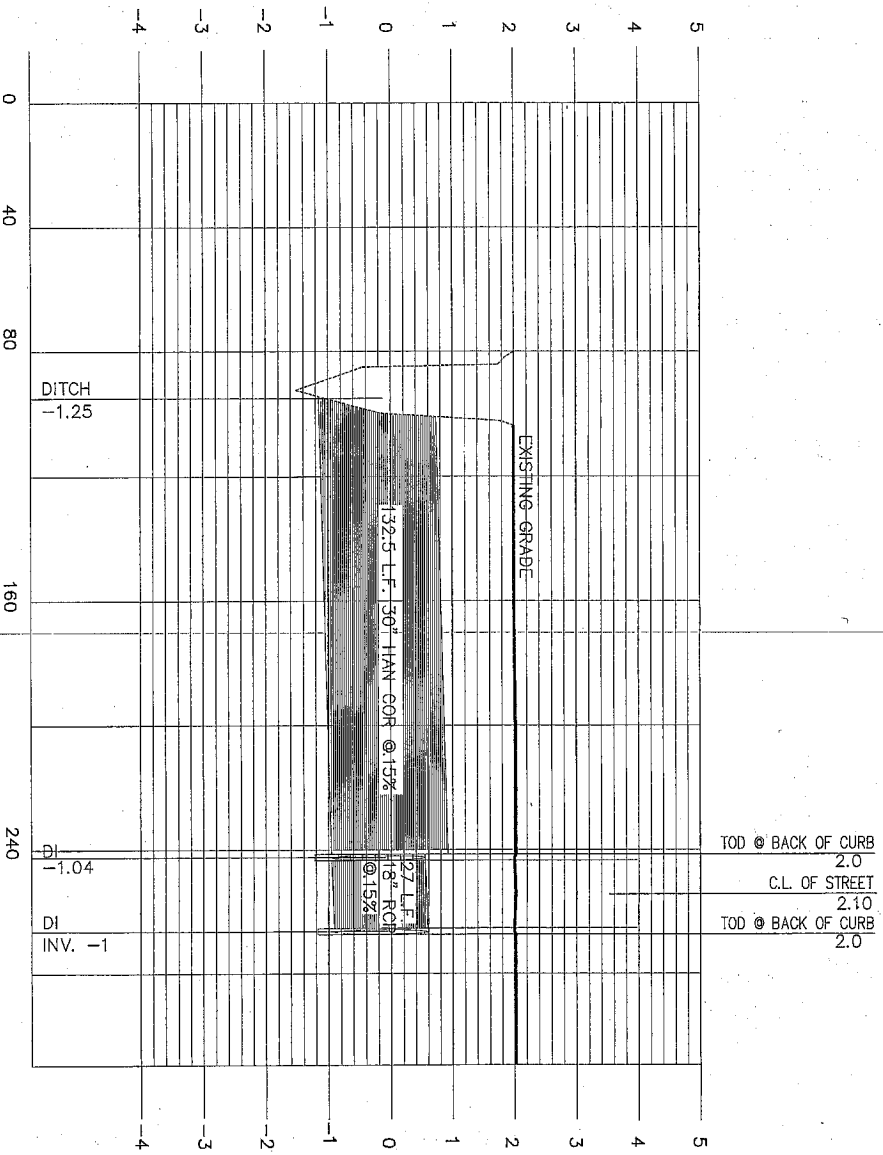
1/17

C.1.3c

COPYRIGHT
 THESE DRAWINGS ARE PROTECTED BY UNITED STATES COPYRIGHT LAW. THEY HAVE BEEN PREPARED BY OR FOR THE
 PROJECT DESIGNER AND ARE NOT TO BE REPRODUCED OR TRANSMITTED IN ANY FORM OR BY ANY MEANS, ELECTRONIC OR MECHANICAL,
 INCLUDING PHOTOCOPYING, RECORDING, OR BY ANY INFORMATION STORAGE AND RETRIEVAL SYSTEM, WITHOUT THE WRITTEN
 PERMISSION OF THE ARCHITECT. ALL RIGHTS ARE RESERVED TO KURRAY ARCHITECTS.



J-1
 DRAINAGE PLAN
 N.T.S.



A-1
 PROFILE
 N.T.S.

PLANNING AND REVIEW SHEET

ASHTON OAK SUBDIVISION
 PHASE 3

DATE: 05.06.2016
 DRAWN BY: [Name]
 CHECKED BY: [Name]

C.1.3d

KURRAY ARCHITECTS

3001 Riverside Drive, Metairie, LA 70002
 Ph: (504)988-1490 Fax: (504)988-1481

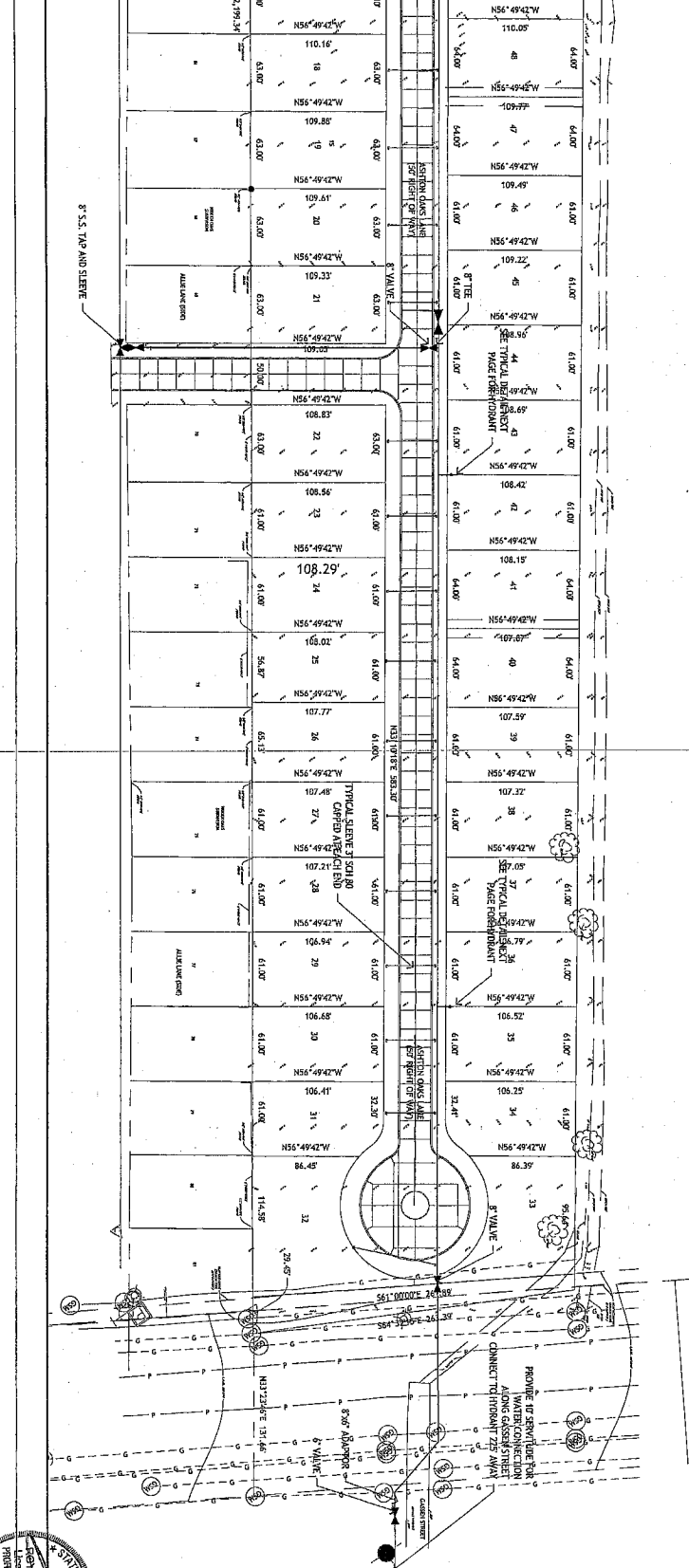
3178

STATE OF LOUISIANA
 PROFESSIONAL ENGINEER
 No. 12345

3001 Riverside Drive, Metairie, LA 70002
 Ph: (504)988-1490 Fax: (504)988-1481

THIS DOCUMENT IS THE PROPERTY OF UNITED STATES COPYRIGHT LAW. IT HAS BEEN PREPARED SPECIFICALLY FOR THE PROJECT AND IS NOT TO BE REPRODUCED OR TRANSMITTED IN ANY FORM OR BY ANY MEANS, ELECTRONIC OR MECHANICAL, WITHOUT THE EXPRESS WRITTEN PERMISSION OF THE AUTHOR. ALL RIGHTS ARE RESERVED BY THE AUTHOR.

A-1 WATER PLAN B



MURRAY ARCHITECTS

3571 RIVERSIDE DRIVE, SUITE 100
 RICHMOND, VA 23220
 Tel: (804) 772-7272 Fax: (804) 772-7273

STEVENS ENGINEERING

3571 RIVERSIDE DRIVE, SUITE 100
 RICHMOND, VA 23220
 Tel: (804) 772-7272 Fax: (804) 772-7273

NO. 100000195

DATE: 08/22/2018

PROJECT: ASTON OAKS SUBDIVISION PHASE 3

SCALE: AS SHOWN

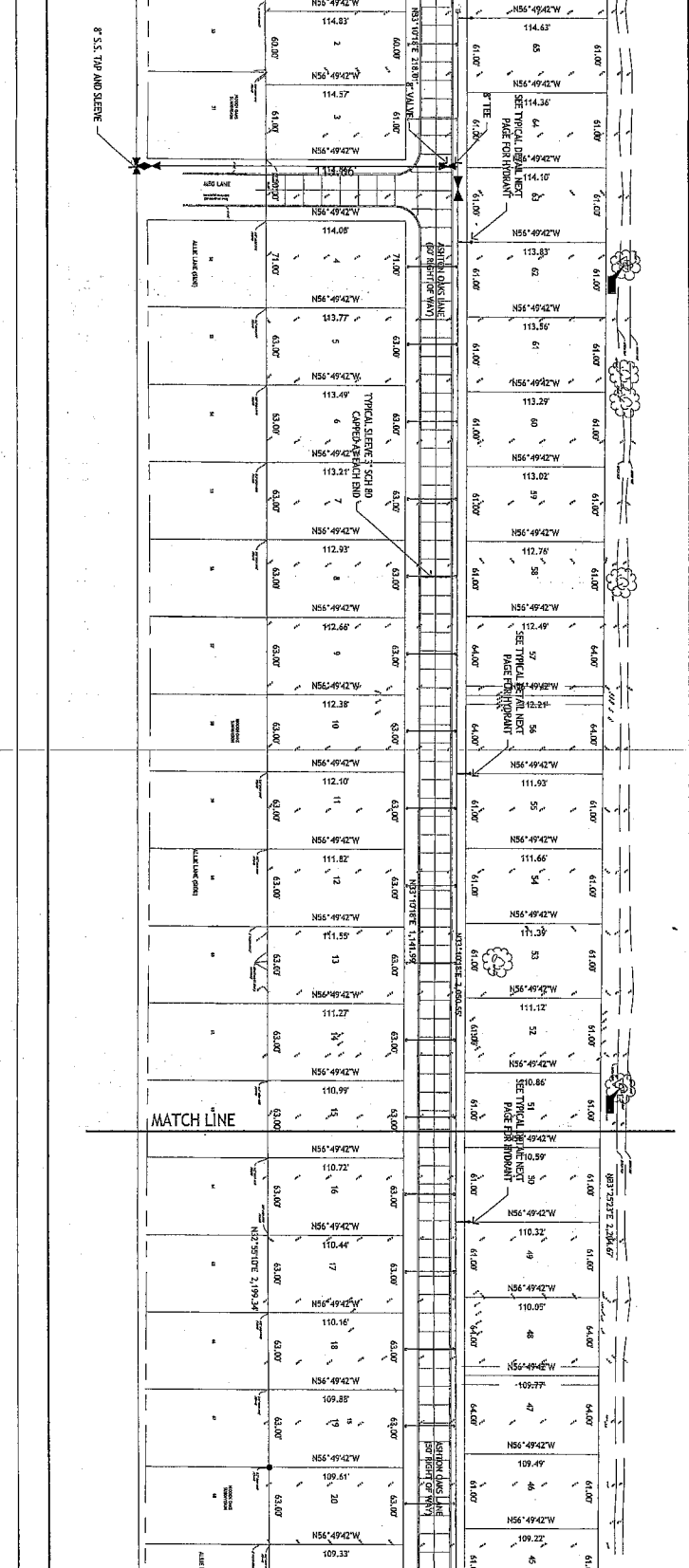
DESIGNED BY: [Signature]

CHECKED BY: [Signature]

DATE: 08/22/2018

PROJECT: ASTON OAKS SUBDIVISION PHASE 3

G-1 WATER PLAN A



MURRAY ARCHITECTS

3571 RIVERSIDE DRIVE, SUITE 100
 RICHMOND, VA 23220
 Tel: (804) 772-7272 Fax: (804) 772-7273

STEVENS ENGINEERING

3571 RIVERSIDE DRIVE, SUITE 100
 RICHMOND, VA 23220
 Tel: (804) 772-7272 Fax: (804) 772-7273

NO. 100000195

DATE: 08/22/2018

PROJECT: ASTON OAKS SUBDIVISION PHASE 3

SCALE: AS SHOWN

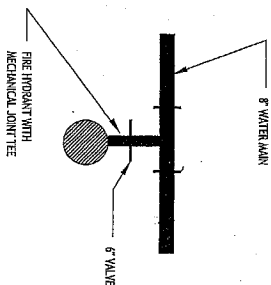
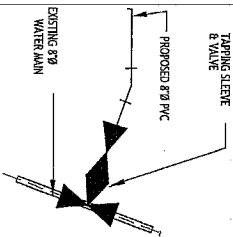
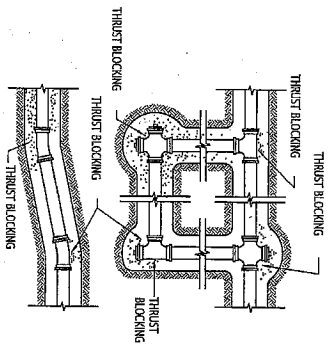
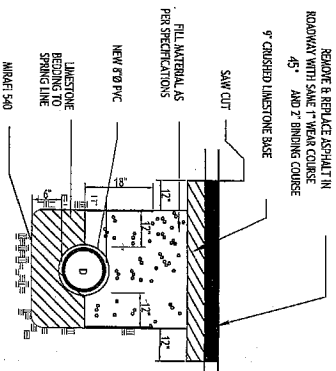
DESIGNED BY: [Signature]

CHECKED BY: [Signature]

DATE: 08/22/2018

PROJECT: ASTON OAKS SUBDIVISION PHASE 3

C.1.4



WATER NOTES

1. THE CONTRACTOR SHALL NOT EXPOSE, CUT, TAP INTO OR CONNECT TO EXISTING DEPARTMENT OF WATERWORKS LINES WITHOUT FIRST ADVISING AND SECURING PERMISSION OF THE DEPARTMENT OF WATERWORKS.
2. USE NECESSARY OIL FITTINGS TO AVOID CONTACTS WITH OTHER UTILITIES.
3. BACKFILL ALL STREET CROSSINGS WITH BEVER SAND.
4. 8" DIA. WATERLINE SHALL BE PVC PIPE, BLUE IN COLOR, IN ACCORDANCE WITH AWWA C900, CLASS 150, (DN 10).
5. FIRST CHLORINATION WILL BE PROVIDED BY WATER WORKS. ANY ADDITIONAL CHLORINATION WILL BE AT THE CONTRACTOR'S EXPENSE.
6. WATERLINES SHALL BE INSTALLED WITH 36" TO 48" OF COVER OVER THE BARREL OF THE PIPE EXCEPT AT THE FOLLOWING LOCATIONS:
 7. FRESH CROSSINGS SHALL CONFORM TO AWWA SPECIFICATION C-900. APPROVAL SHALL BE OBTAINED FROM SUPERINTENDENT 240 OR APPROVED EQUAL. FIRE HYDRANTS SHALL BE FIELDED 4-423.
 8. PRE-RESTRAINING GLANDS SHALL BE USED AT HYDRANTS, TAPPING SLEEVES AND VALVES, AND ANY DIRECTIONAL CHANGE AND SHALL BE ROMAC GIP RING PIPE RESTRAINTS.
 9. DUCTILE IRON SHALL BE MANUFACTURED AND FACTORY TESTED IN ACCORDANCE WITH AWWA C151 AND AWWA C151. CLASS 50, CENTRAL LINED ACCORDING TO AWWA C104.
 10. ALL VALVES SHALL BE BRONZE ADJUSTED GATE VALVES, MUELLER SERIES A2360-20.
 11. ALL VALVES SHALL BE NON-ROBBER, BRONZE ADJUSTED GATE VALVES, MUELLER SERIES A2360-20 RESULTING EXACTLY WITH NON-RISING STEMS. VALVES BELOW GROUND SHALL BE PROVIDED WITH 2" OPERATING NUT.
 12. ALL VALVE BODIES SHALL BE CONSTRUCTED OF CAST IRON FOR ROADWAY SERVICE. VALVE BODIES SHALL BE FIELDED 4-423 OR APPROVED EQUAL. THE COVER SHALL BE OF THE PRECISE SOCKET TYPE WITH THE VALVE BOX USERS SHALL BE CONSTRUCTED OF CAST IRON FOR ROADWAY SERVICE. THE RISER SHALL FIT INTO THE TOP SECTION OF THE VALVE BOX. THE RISER SHALL BE TRIMMABLE, 5/8" SERIES OR APPROVED EQUAL.
 14. A CONCRETE PRE-CAST 5-48 MEASURING 2' X 2' X 4" WITH COMPRESSIVE STRENGTH OF 2400 PSI SHALL BE PROVIDED AROUND ALL VALVE BODIES NOT ON ROADWAY. THE OPENING IN THE SLAB SHALL BE 3/4" GREATER IN DIAMETER THAN THE OUTER DIAMETER OF THE VALVE BOX.
 15. THE CONTRACTOR WILL INDICATE THE LOCATION OF EACH VALVE BY MEANS OF A "V" CUT IN A PRE-CAST 5-48 PLACED ADJACENT TO THE ROADWAY EDGE AND LOCATED AT THE VALVE SITE. DIMENSIONS AND TO THE PAGES WATERWORKS DEPARTMENT PRINT TO ACCEPTANCE OF THE WATERLINE.
 16. THE CONTRACTOR SHALL VERIFY THE LOCATION OF OTHER UTILITIES AND TAKE NECESSARY PRECAUTIONS TO PROTECT SAME.
 19. ALL WORK MUST CONFORM TO THE SPECIFICATIONS OF THE ST. CHARLES DEPARTMENT OF WATERWORKS. THE CONTRACTOR SHALL VERIFY THAT ALL PROPOSED MATERIALS, METHODS AND WORKMANSHIP CONFORM TO THE REQUIREMENTS OF AND ARE ACCEPTABLE TO THE DIRECTOR OF THE DEPARTMENT OF WATER WORKS PRIOR TO INSTALLATION OR USAGE.
 20. TESTING AND DISINFECTING OF WATERLINE: ALL WATER SYSTEM INSTALLATIONS MUST PASS DEPARTMENT OF WATERWORKS APPROVED PRESSURE, LEAKAGE AND BACTERIOLOGICAL TESTS PRIOR TO APPROVAL. SEE ST. CHARLES DEPARTMENT OF WATERWORKS SPECIFICATIONS.
 21. 3" PVC PIPE TO BE CAPED EACH END WITH A 3" DIA. CAP OR APPROVED EQUAL.
 22. A TRACKER WIRE SHALL BE ATTACHED DIRECTLY TO THE PIPE. ALL FITTINGS AND APPURTENANCES, THE TRACKER WIRE WILL BE RUN TO THE TOP OF EACH VALVE BOX TO ALLOW CONNECTION TO THE WIRE. (1/4" DIA. SOLID WIRE)
 23. CONTRACTOR IS RESPONSIBLE FOR OBTAINING THE CORRECT FIRE HYDRANT SERVICE LINE DEPTH DUE TO THE INTERFERENCE OF OTHER UTILITIES. ANY MATERIALS THE CONTRACTOR SHALL BE RESPONSIBLE FOR OBTAINING THE CORRECT FIRE HYDRANT SERVICE LINE DEPTH DUE TO THE INTERFERENCE OF OTHER UTILITIES.
 24. THE REQUIRED COVER FOR WATER AND SANITARY SEWER PIPES SHALL BE A MINIMUM OF 18 INCHES ABOVE FINISHED GRADE. ALL HYDRANTS SHALL BE VALUED WHERE THE SEWER PIPES SHALL BE A MINIMUM OF 4 FEET.
 25. THE REQUIRED HORIZONTAL SEPARATION FOR PARALLEL WATER AND SEWER PIPES SHALL BE A MINIMUM OF 4 FEET.
 26. CONTRACTOR TO PROVIDE 7/8" DIA. DAY WRITTEN NOTICE TO ST. CHARLES PARISH WATERWORKS BEFORE COMMENCEMENT OF CONSTRUCTION.
 27. PIPE TO BE RESTRAINED SHALL BE USED ON ALL PIPES THAT RUN UNDER ROADWAYS.
 28. FIELD ADJUST THE IN TO EXISTING 6" WATERLINE ON GLENN STREET WITH A 6"x8" REDUCER.

LEGEND

- MECHANICAL JOINT & MECHANICAL JOINT TEE WITH MECHANICAL JOINT, RIGIDLY SECURED.
- MECHANICAL JOINT GATE VALVE MUELLER SERIES A2360-20 OR APPROVED EQUAL.
- TAP INTO EXISTING 12" Ø PVC MAIN AND 12" AC MAIN
- MECHANICAL JOINT TEE IN LINE WITH HYDRANT
- TAPPING SLEEVE SHALL BE STAINLESS STEEL.
- SMITH-BLAN 662 OR 663 JCM 432 ROMAC SST
- TAPPING SLEEVE VALVE SHALL BE MUELLER SERIES A2360-16 OR APPROVED EQUAL.

A-1 NOTES

A-7 LEGEND

THIS DOCUMENT IS THE PROPERTY OF THE CITY OF ST. CHARLES, LOUISIANA. IT IS TO BE USED ONLY FOR THE PROJECT AND SITE SPECIFICALLY IDENTIFIED HEREIN. IT IS NOT TO BE REPRODUCED, COPIED, OR TRANSMITTED IN ANY FORM OR BY ANY MEANS, WITHOUT THE EXPRESS WRITTEN APPROVAL AND PARTICIPATION OF THE CITY ENGINEER. VIOLATION OF THESE DOCUMENTS SHALL BE SUBJECT TO THE PENALTIES OF THE CITY OF ST. CHARLES, LOUISIANA.

3271 Redoubt Drive, Metairie, LA 70002
 Ph: (504)588-1480 Fax: (504)588-1481

MURRAY ARCHITECTS
 214-741-1511
 214-741-1512
 214-741-1513

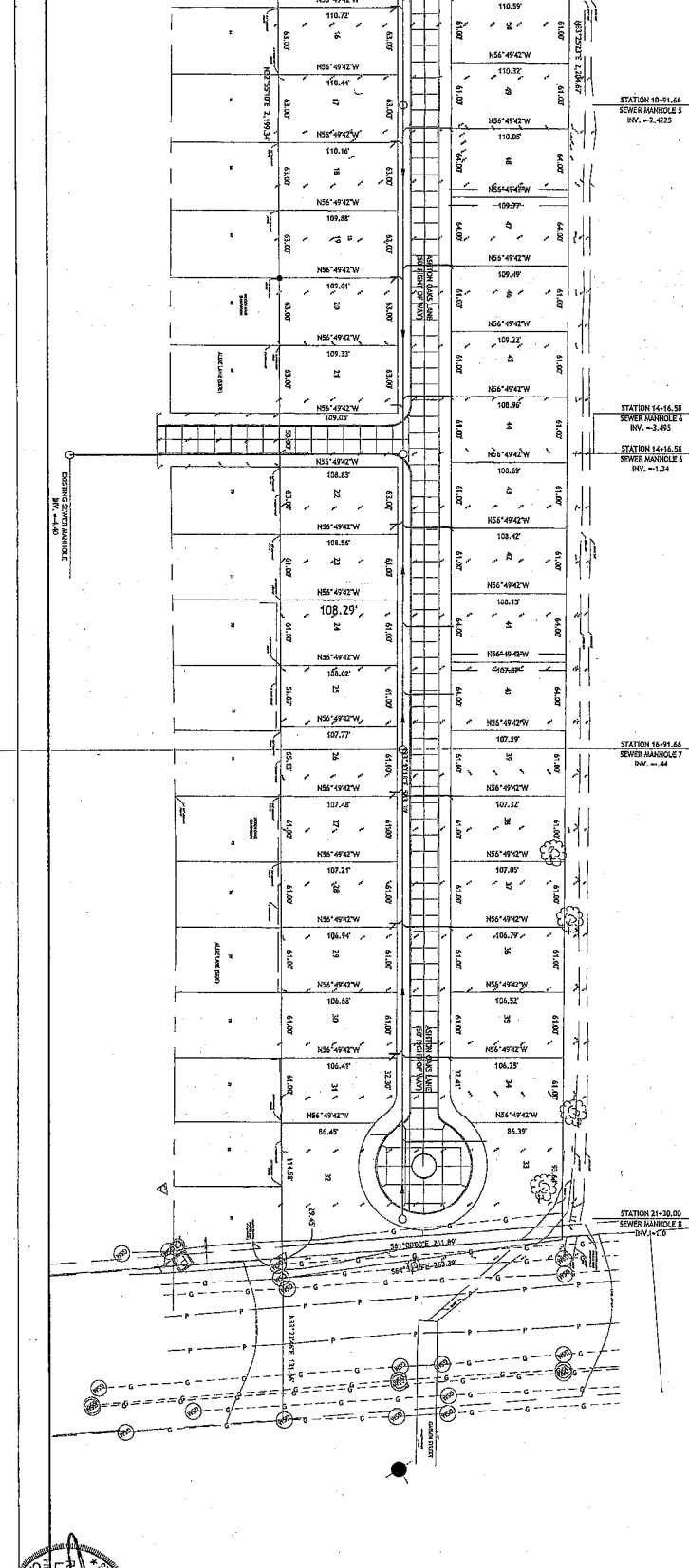
ASHTON OAKS SUBDIVISION
 PHASE 3

1500
 05/04/2016
 design development

C.1.5

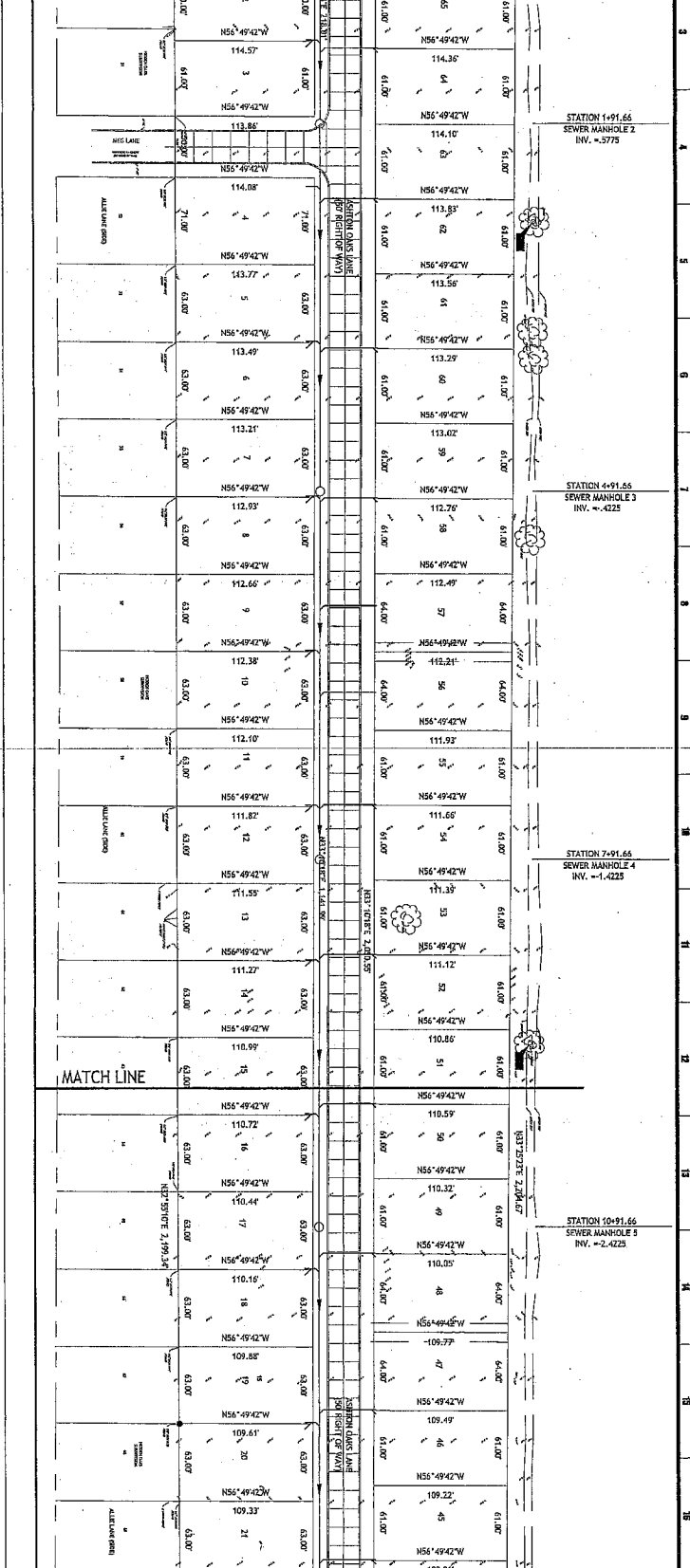
Copyright 2014 by Murray Architects, Inc. All rights reserved. This drawing is prepared specifically for the project and site shown. It is not to be used for any other project or site without the written consent of Murray Architects, Inc. The user of this drawing shall be responsible for all errors and omissions. All dimensions are in feet and inches unless otherwise noted. All dimensions are to the centerline of the sewer pipe unless otherwise noted. All dimensions are to the centerline of the sewer pipe unless otherwise noted.

A-1
SEWER PLAN B

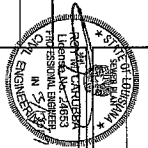


1-50'

G-1
SEWER PLAN A



1-50'



ASHTON OAKS SUBDIVISION
PHASE 3

| NO. | REVISION | DATE |
|-----|----------|------|
| 1 | | |
| 2 | | |
| 3 | | |
| 4 | | |
| 5 | | |

MURRAY
ARCHITECTS

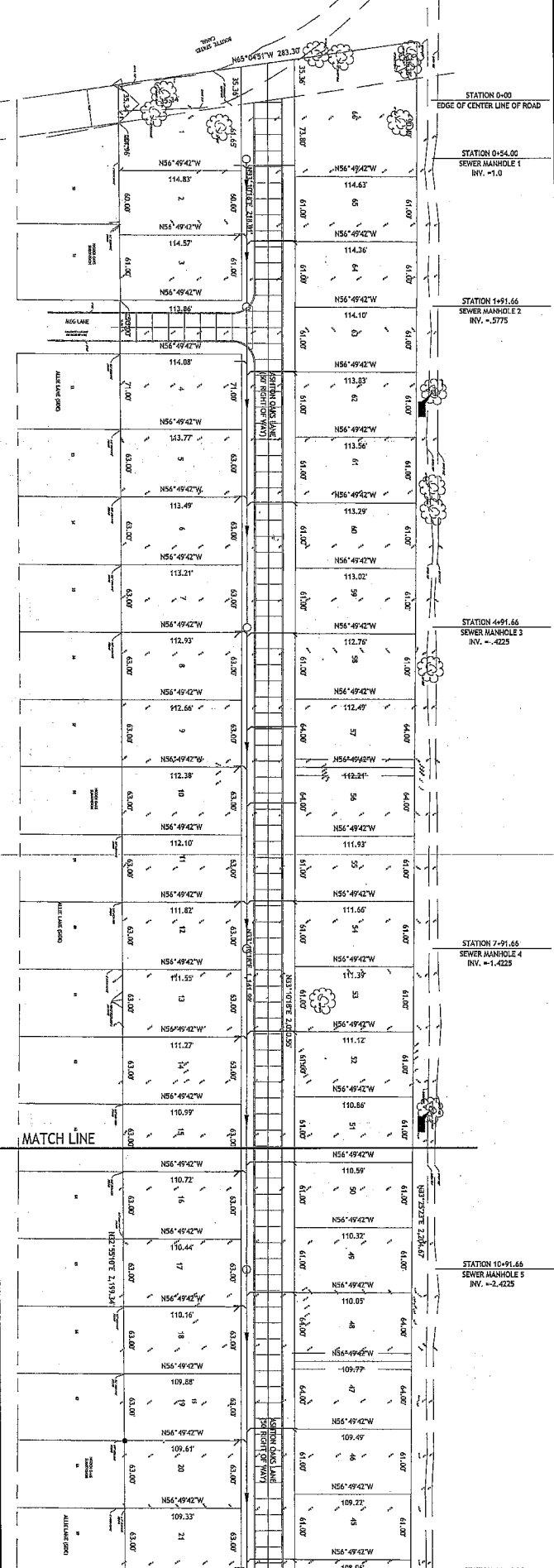


3271 Briarwood Drive, Metairie, LA 70002
Ph: (504) 885-1400 Fax: (504) 885-1491

C.1.6

Copyright © 2018 by Murray Architects, Inc. All rights reserved. This document is the property of Murray Architects, Inc. and is not to be reproduced, stored in a retrieval system, or transmitted in any form or by any means, electronic, mechanical, photocopying, recording, or by any information storage and retrieval system, without the prior written permission of Murray Architects, Inc.

G-1
1'-0" = 1'-0"
SEWER PLAN A



STATION 0+00
EDGE OF CENTER LINE OF ROAD

STATION 0+54.00
SEWER MANHOLE 1
2.4

STATION 1+51.66
SEWER MANHOLE 2
3.0

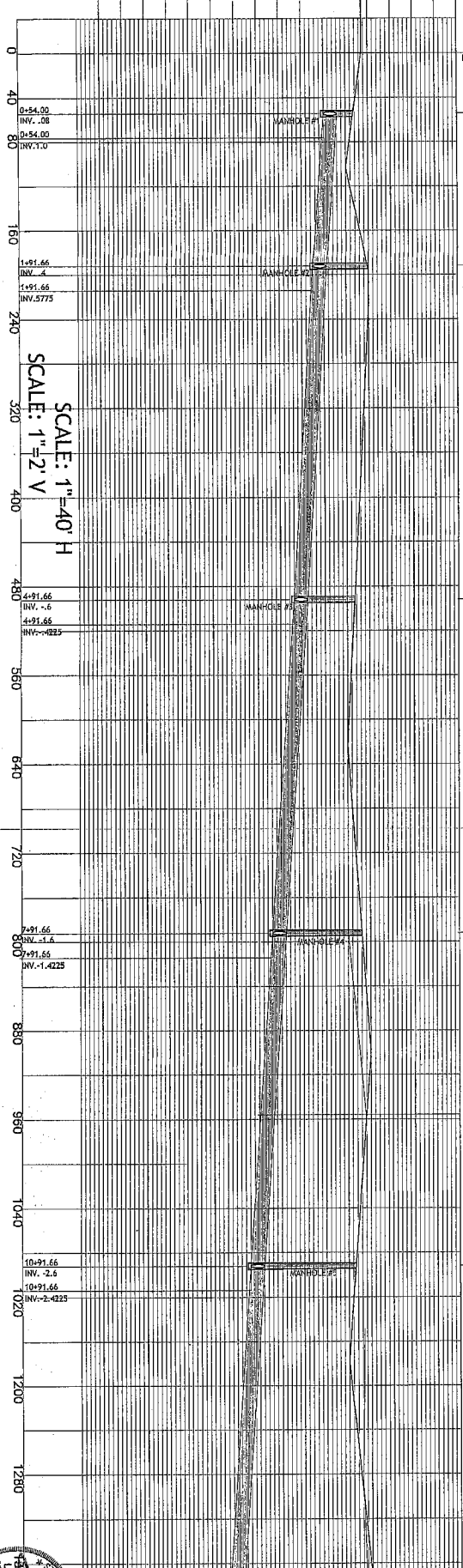
STATION 4+91.66
SEWER MANHOLE 3
2.4

STATION 7+91.66
SEWER MANHOLE 4
2.6

STATION 10+91.66
SEWER MANHOLE 5
2.4

All sewer lines are 8" and have a slope of 0.34%.

A-1
SEWER PROFILE A



SCALE: 1" = 40' H
SCALE: 1" = 2' V



ASHTON OAKS SUBDIVISION
PHASE 3

C.1.6a

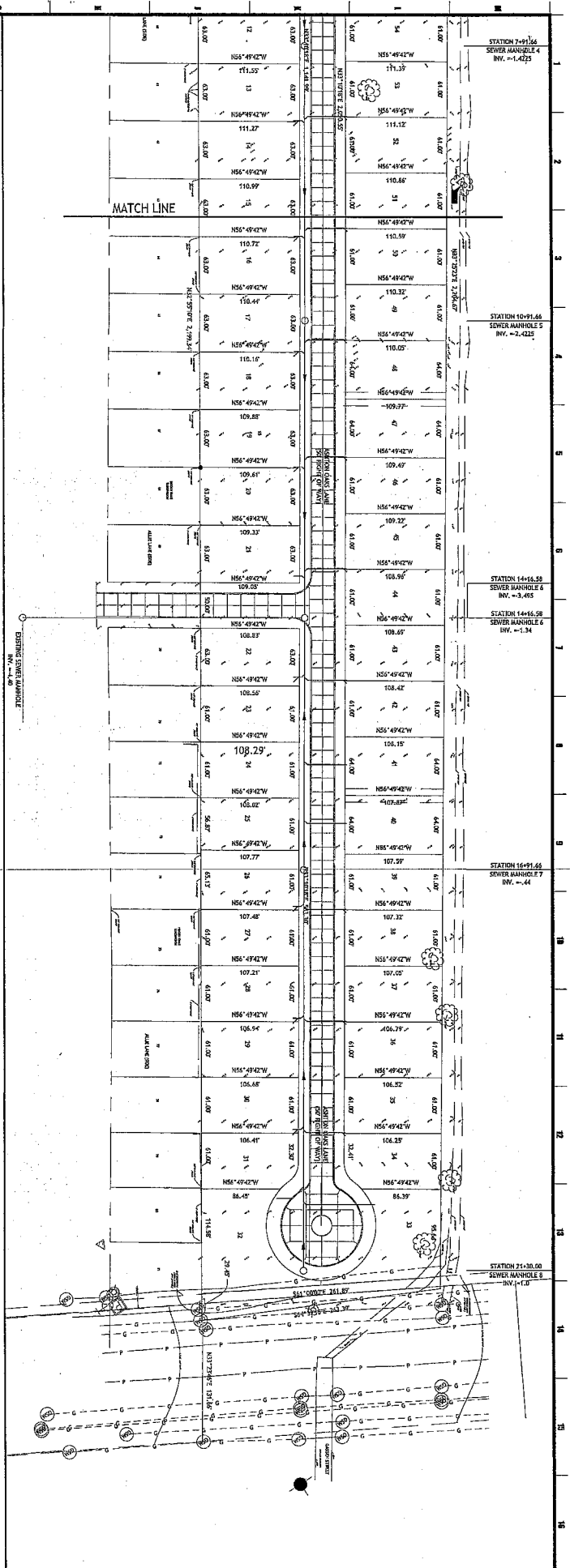
MURRAY
ARCHITECTS

3621 Ridgeway Drive, Metairie, LA 70002
Ph: (504) 885-1490 Fax: (504) 885-1491



13750 Hwy 102, Suite 1000
Metairie, LA 70002
(504) 734-7275
(504) 734-7275
Fax: (504) 734-7275

Copyright © 2008 by ASHTON OAKS SUBDIVISION. ALL RIGHTS RESERVED. THESE DOCUMENTS ARE PREPARED BY LICENSED PROFESSIONALS AND ARE NOT BE LOANED, REPRODUCED, COPIED, OR IN ANY MANNER USED FOR ANY OTHER PROJECT WITHOUT THE WRITTEN CONSENT OF THE ENGINEER OF RECORD. ANY SUCH VIOLATION WILL BE PROSECUTED TO THE FULL EXTENT OF THE LAW. ALL RIGHTS ARE RESERVED TO ASHTON OAKS SUBDIVISION.



G-1 SEWER PLAN B

1"=50'

STATION 10+91.66
SEWER MANHOLE 5
2.4

All sewer lines are 8" and have a slope of 0.25%

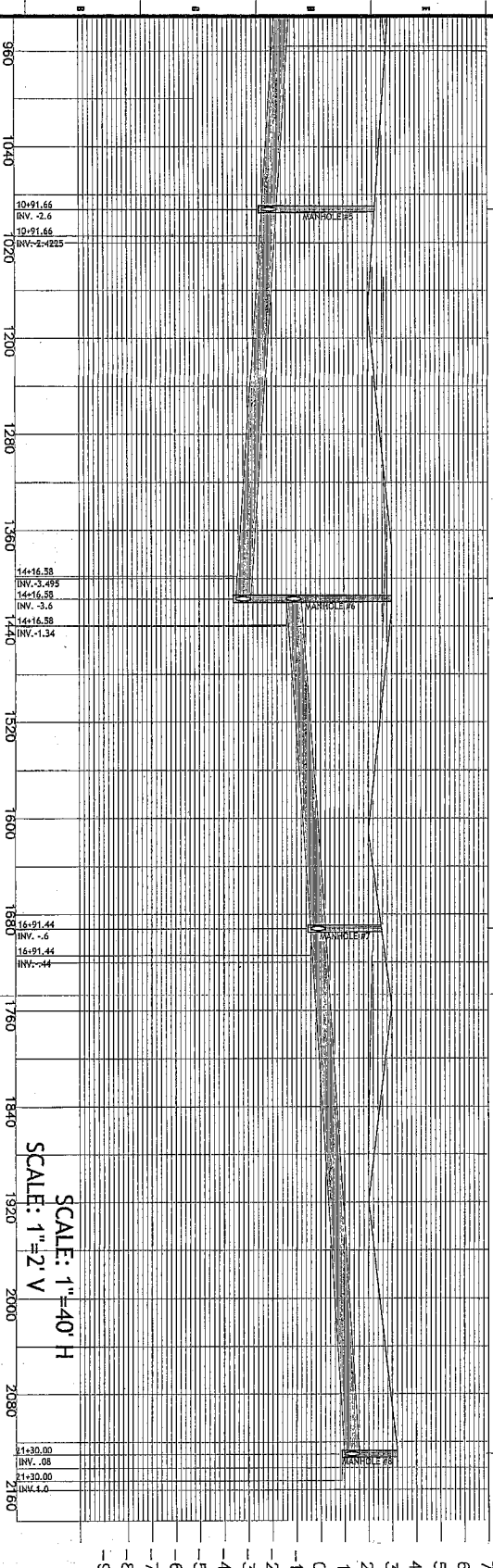
STATION 14+16.58
SEWER MANHOLE 6
3.0'

All sewer lines are 8" and have a slope of 0.25%

STATION 16+91.66
SEWER MANHOLE 7
2.6

All sewer lines are 8" and have a slope of 0.25%

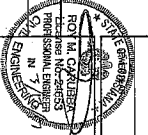
STATION 21+30.00
SEWER MANHOLE 8
3.25



A-1 SEWER PROFILE B

SEE PLAN

SCALE: 1"=40' H
SCALE: 1"=2' V



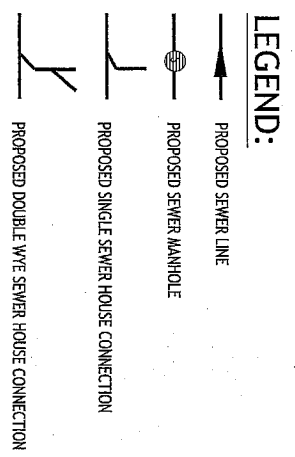
ASHTON OAKS SUBDIVISION
PHASE 3

MURRAY ARCHITECTS
13760 River Road
Covington, LA 70042
(504) 774-7225
(504) 725-0182

CONSTRUCTION CONSULTANTS
3921 Ridgeland Drive, Metairie, LA 70002
Ph: (504) 888-1490 Fax: (504) 888-1481

C.1.6

COPYRIGHT AND PROTECTED BY UNITED STATES COPYRIGHT LAW. THEY HAVE BEEN PROVIDED SPECIFICALLY FOR THE PROJECT IDENTIFIED HEREIN AND ARE NOT TO BE REPRODUCED OR USED IN ANY OTHER PROJECT OR AT ANY OTHER LOCATION WITHOUT THE EXPRESS WRITTEN APPROVAL AND PARTISANSHIP OF MURRAY ARCHITECTS. RESPONSIBILITY OF THESE DOCUMENTS MUST BE AUTHORIZED BY THE ARCHITECT. ALL RIGHTS ARE RESERVED TO MURRAY ARCHITECTS.



J-1 RESTORATION

N.T.S.

SEWER CALCULATIONS

66 BUILDING SITE
 66x400 GALLONS PER DAY=11200 GALLONS
 26400/1440=18.33 GALLONS PER MINUTE

SEWER NOTES

1. SANITARY SEWER PIPE SHALL BE PVC PIPE, GREEN IN COLOR, CONFORMING TO ASTM D-3034, SDR 35 OR APPROVED EQUAL.
2. THE CONTRACTOR SHALL FURNISH THE ENGINEER WITH A PLAN SHOWING THE DISTANCE FROM THE NEAREST MANHOLE TO EACH HOUSE CONNECTION. HE SHALL INDICATE THE DEPTH OF MANHOLES AND DISTANCE BETWEEN THEM. HE SHALL VERIFY THE DEPTH AND LOCATION OF ALL HOUSE CONNECTIONS UPON COMPLETION OF THE PROJECT.
3. THE SEWER PLAN SHOWS THE LOCATION OF MOST, IF NOT ALL HOUSE CONNECTIONS. THE CONTRACTOR MUST SEWE EACH LOT IN THE SUBDIVISION.
4. WHERE REQUIRED BY GROUND CONDITIONS AND OR OSHA REGULATIONS, THE CONTRACTOR SHALL USE TIMBER OR SHEETING OR OTHER MEANS TO CONTROL THE WIDTH OF THE EXCAVATION AND TO PROVIDE SAFE WORKING CONDITIONS FOR HIS WORKMEN. THE COST OF THE SHEETING AND BRACING SHALL BE INCLUDED IN THE CONTRACTOR'S PRICE FOR INSTALLING THE SEWER. NO EXTRA WILL BE PAID FOR THIS ITEM.
5. SEWER BEDDING SHALL CONFORM TO DRAWING DETAILS.
6. THE LETTERS "MC" SHALL BE PLACED IN THE FACE OF A PIPE CAST PAD AND INSTALLED NEXT TO THE EDGE OF THE PAVING AND OVER EACH HOUSE CONNECTION. SEE DETAIL FOR COMPLETE DESCRIPTION OF THE WORK.
7. IT IS REQUIRED THAT A CERTIFICATION OF THE INFILTRATION REQUIREMENTS BE FURNISHED BY A TESTING LABORATORY AS SELECTED BY ST. JOHN PARISH. THE COST OF THIS WORK SHALL BE INCLUDED IN THE COST OF THE PIPE.
8. SEWER MAIN TO BE INSTALLED AS SHOWN ON THE DRAWINGS.
9. ALL HOUSE CONNECTIONS SHALL BE 6" Ø UNLESS NOTED OTHERWISE.
10. ALL MANHOLES SHALL BE CONSTRUCTED OF FRP AS MANUFACTURED BY FLUID CONTAINMENT WITH CONCRETE BASE UTILIZING FLEXIBLE RUBBER ROOTS AT CONNECTION TO BE ACCORDANCE WITH THE REQUIREMENTS OF ST. CHARLES PARISH (NO STEPS TO BE INSTALLED IN MANHOLES).
11. ALL MANHOLE FRAMES AND COVERS SHALL BE AS APPROVED BY ST. CHARLES PARISH DEPARTMENT OF WASTEWATER.
12. THE CONTRACTOR SHALL BE REQUIRED TO FURNISH AN AS-BUILT SEWER PLAN TO THE ENGINEER AND TO THE PARISH DEPARTMENT OF PUBLIC WORKS PRIOR TO ACCEPTANCE OF THE WORK.
13. MISCELLANEOUS SEWER MATERIALS SHALL BE STANDARD SEWER MATERIALS AND SHALL BE APPROVED BY THE PARISH ENGINEER.
14. ACCEPTANCE TEST:
 - A. UNLESS PREVIOUSLY APPROVED BY THE PARISH ENGINEER, ALL GRAVITY AND FORCE MAIN TESTS SHALL BE PRESSURE TESTED IN ACCORDANCE WITH ALL ST. CHARLES PARISH STANDARDS. IN ADDITION, ALL EXISTING SANITARY SEWERS SHALL BE SUBJECT TO INFILTRATION, AIR PRESSURE, AND/OR EXFILTRATION TESTS, OR A COMBINATION THEREOF IN ACCORDANCE WITH THE REQUIREMENTS OF THE PARISH ENGINEER.
 - B. WHEN THE ENGINEER ELECTS THE USE OF THE INFILTRATION TEST, THE INFILTRATION RATE SHALL NOT EXCEED TWO HUNDRED FIFTY (250) GALLONS PER INCH OF DIAMETER PER MILE PER TWENTY-FOUR (24) HOURS.
 - (ORD. NO. 94-12-4, § VIII, 12.5-941)
15. NO BLUE PIPE SHALL BE USED IN SEWER CONSTRUCTION

A-1 SEWER CALCULATIONS

A-7 SEWER NOTES

N.T.S.

N.T.S.



| NO. | REVISION | DATE |
|-----|----------|------|
| 1 | | |
| 2 | | |
| 3 | | |
| 4 | | |
| 5 | | |
| 6 | | |

ASHTON OAKS SUBDIVISION
 PHASE 3



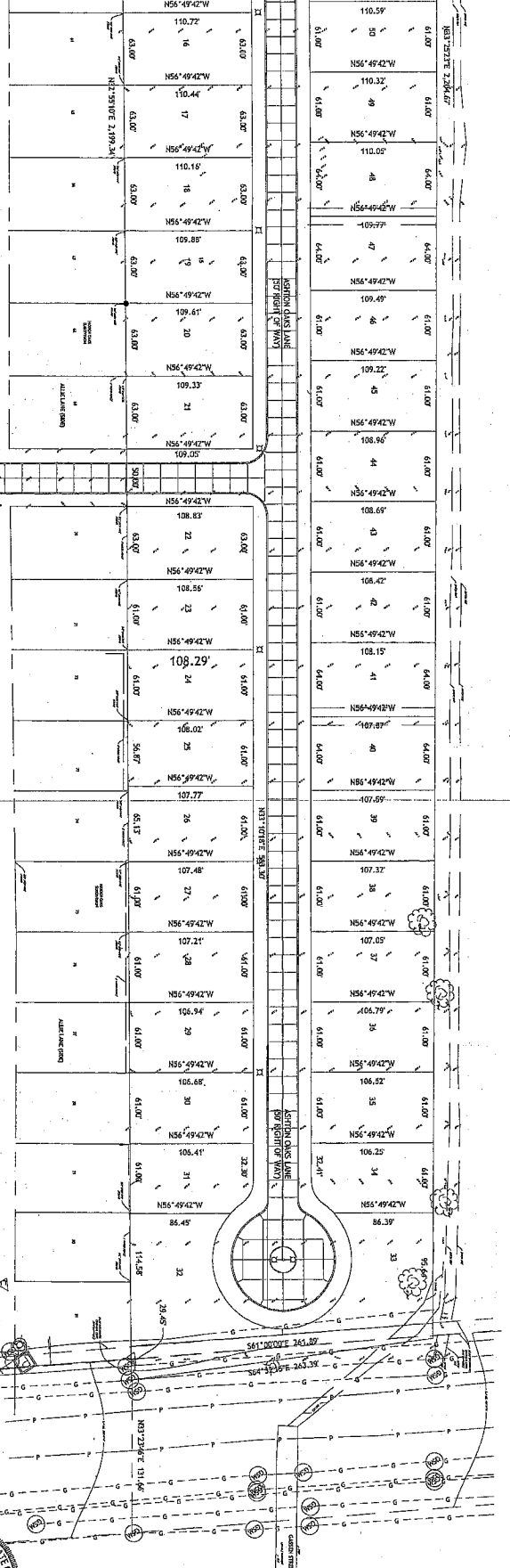
C.1.7

Copyright © 2016 by Murray Architects, Inc. All rights reserved. This document is the property of Murray Architects, Inc. and is not to be reproduced, stored in a retrieval system, or transmitted in any form or by any means, electronic, mechanical, photocopying, recording, or by any information storage and retrieval system, without the express written approval and participation of Murray Architects, Inc. Reproduction of this document without the express written approval of Murray Architects, Inc. is prohibited. All rights are reserved to Murray Architects, Inc.

A-1
1'-0" = 1'-0"

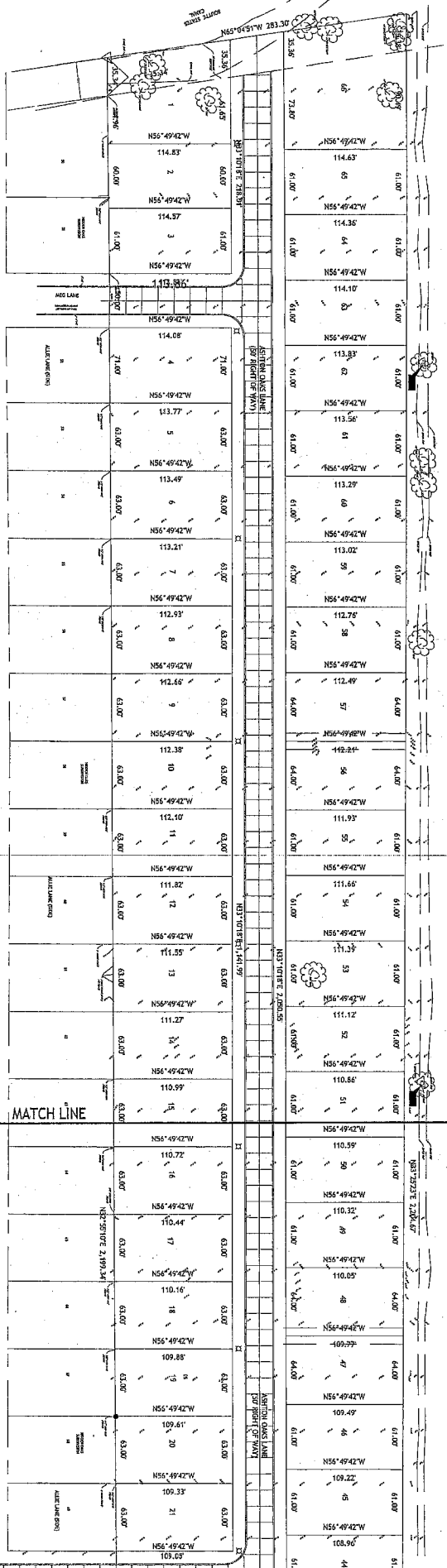
LIGHTING PLAN B

MATCH LINE

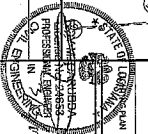


G-1
1'-0" = 1'-0"

LIGHTING PLAN A



MATCH LINE



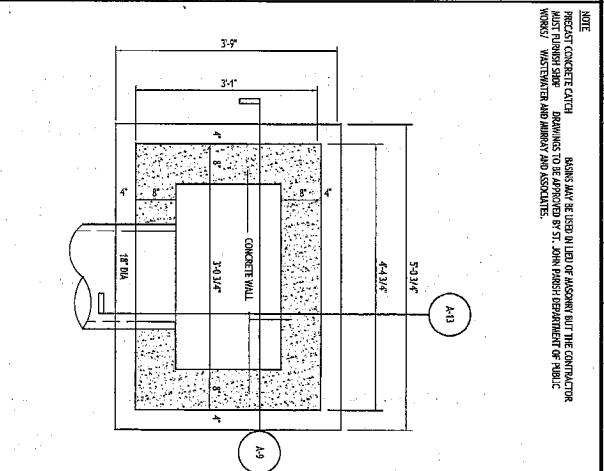
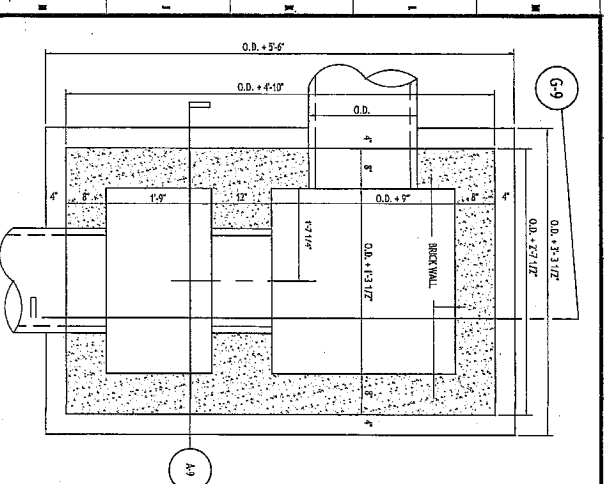
ASHTON OAKS SUBDIVISION
PHASE 3

| NO. | REVISION | DATE |
|-----|----------|------|
| 1 | | |
| 2 | | |
| 3 | | |
| 4 | | |
| 5 | | |

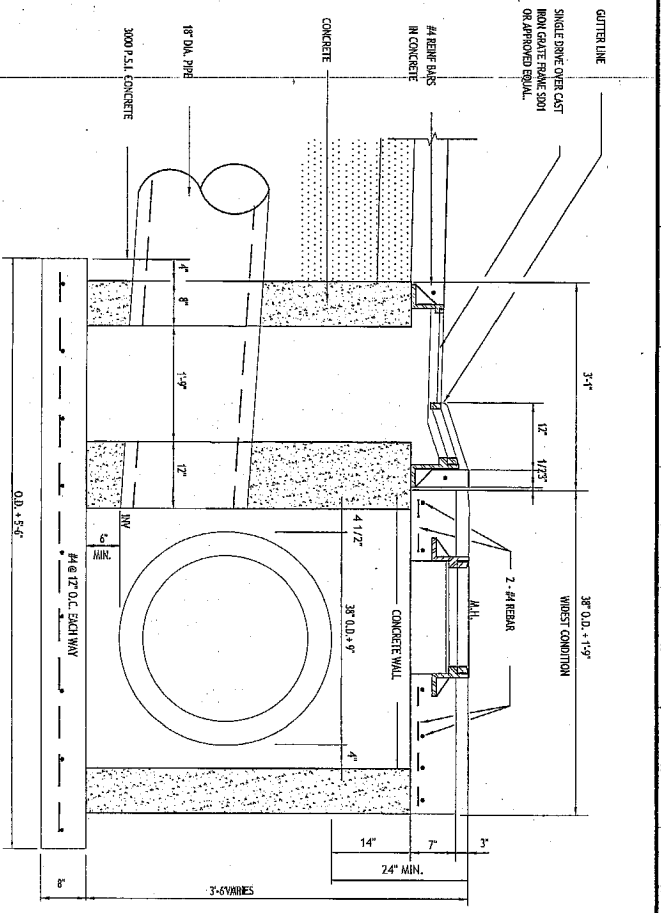
MURRAY
ARCHITECTS

3821 Roubidoux Drive, Metairie, LA 70002
Ph: (504) 885-1490 Fax: (504) 885-1491

C.1.8



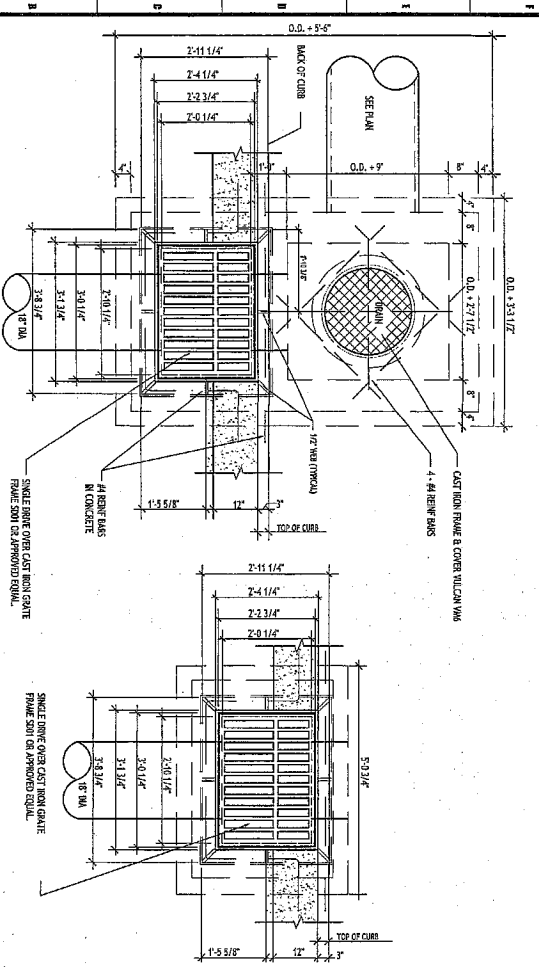
NOTE: PRECAST CONCRETE CATCH BASINS MAY BE USED IN LIEU OF MASSING OUT THE CONTRACTOR MUST FURNISH SOME DRAWINGS TO BE APPROVED BY ST. JOHN PARISH DEPARTMENT OF PUBLIC WORKS/ WASTEWATER AND AIRWAY AND ASSOCIATES.



J-1 CATCH BASIN FOUNDATION LAYOUT
N.T.S.

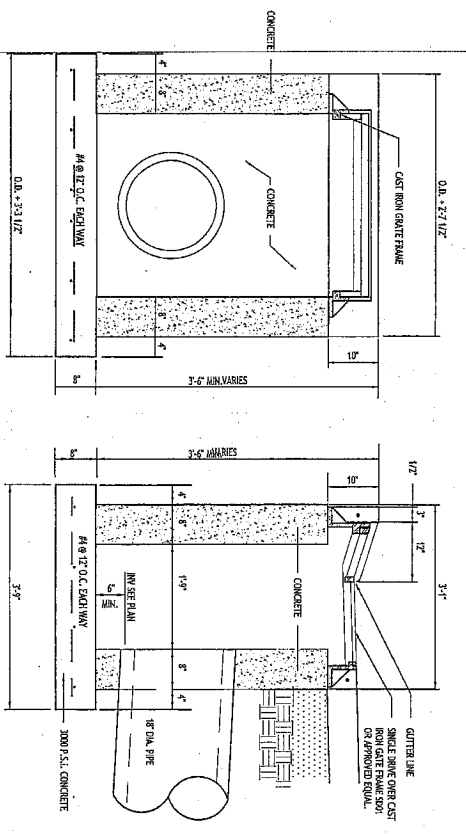
J-1 CATCH BASIN FOUNDATION LAYOUT
N.T.S.

J-1 CATCH BASIN SECTION WITH MANHOLE
N.T.S.



A-1 CATCH BASIN PLAN WITH AND WITHOUT MANHOLE
N.T.S.

A-9 TYPICAL CATCH BASIN SECTION
N.T.S.



STRUCTURAL ENGINEERING
ORRBA
 3621 River Road, Suite 1000
 Baton Rouge, LA 70802
 Ph: (504) 988-1490 Fax: (504) 988-1491

DURRAY ARCHITECTS
 13760 Ave. 100
 Baton Rouge, LA 70804
 (815) 964-7275
 Fax (815) 725-6182

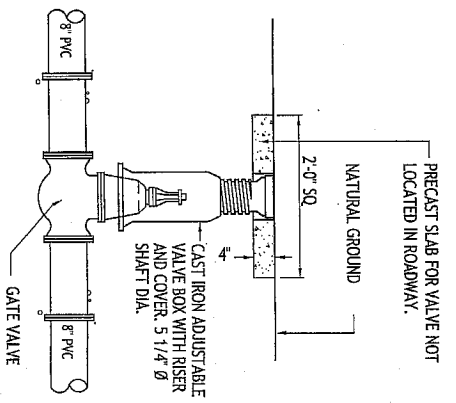
| No. | Revisions | Date |
|-----|-----------|------|
| 1 | | |
| 2 | | |
| 3 | | |
| 4 | | |
| 5 | | |
| 6 | | |

ASHTON OAKS SUBDIVISION
 PHASE 3

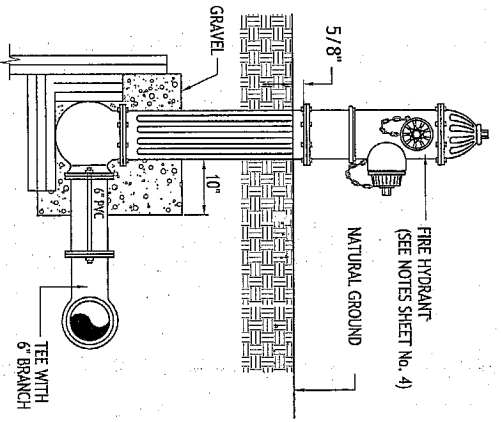
STATE OF LOUISIANA
PROFESSIONAL ENGINEER
ORRBA
 3621 River Road, Suite 1000
 Baton Rouge, LA 70802
 Ph: (504) 988-1490 Fax: (504) 988-1491

REVISIONS
 1000
 DATE: 05.06.2016
 DRAWN BY: [Signature]
 CHECKED BY: [Signature]

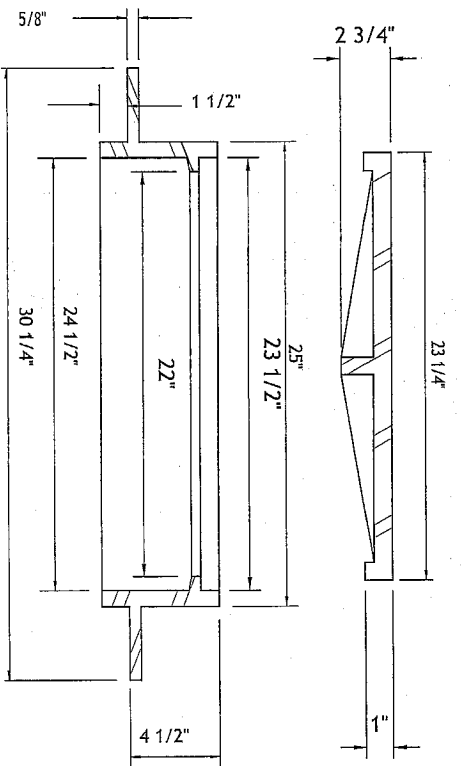
C.1.10



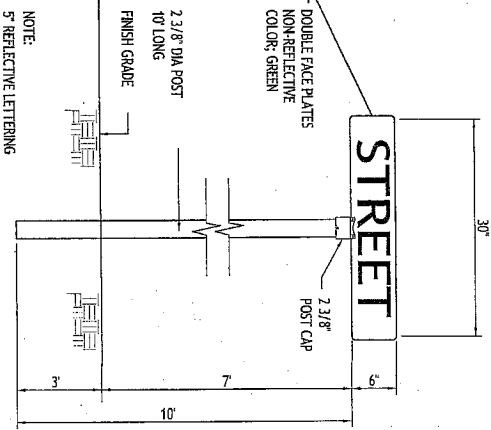
G-1 GATE VALVE
N.T.S.



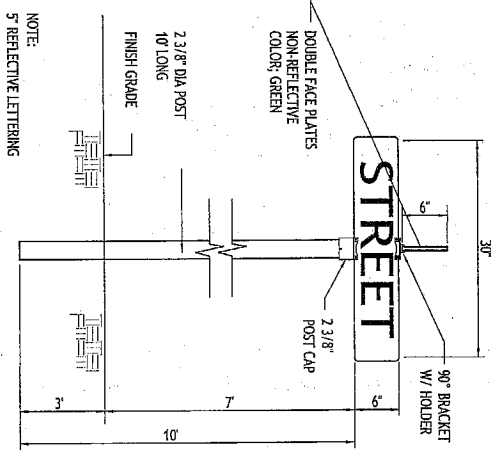
G-5 FIRE HYDRANT DETAIL
N.T.S.



G-9 STANDARD MANHOLE COVER AND FRAME
N.T.S.



A-1 STREET SIGN DETAIL
N.T.S.



A-9 SERVICE CONNECTION -SECTION
N.T.S.

3231 Ridgeway Drive, Metairie, LA 70002
Ph: (504)988-1490 Fax: (504)988-1481

MURRAY ARCHITECTS

ASHTON OAKS SUBDIVISION
PHASE 3

REVISIONS

| No. | REVISION | DATE |
|-----|---------------------|------|
| 1 | REVISION 04.22.2016 | |
| 2 | | |
| 3 | | |
| 4 | | |
| 5 | | |

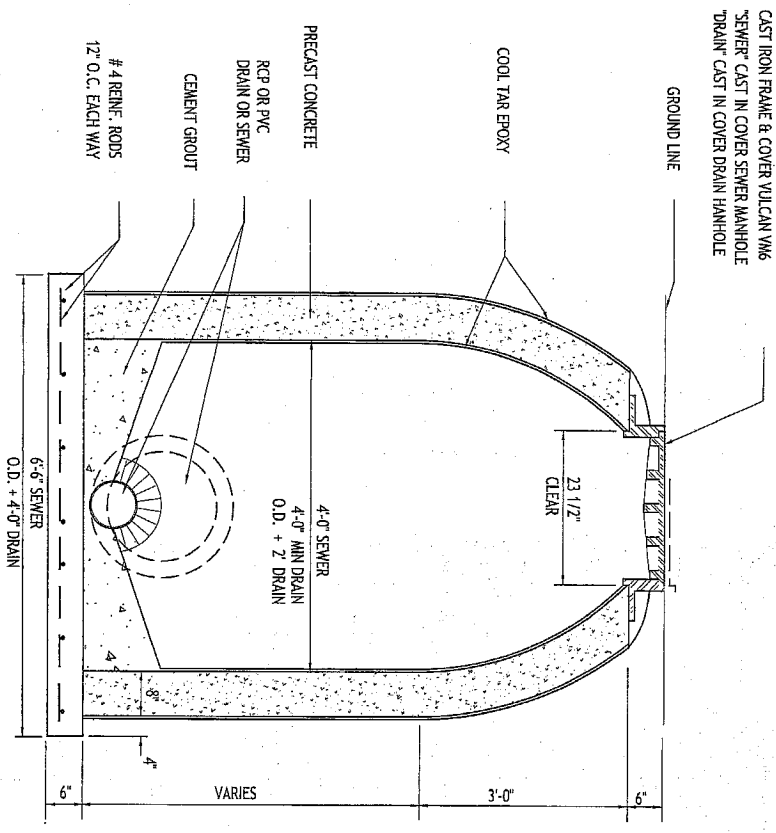


PROJECT NO. 1506
DATE: 05.06.2016
C.1.11

THIS DOCUMENT IS PROVIDED BY THE ARCHITECT AS A SERVICE TO THE CLIENT. IT IS NOT TO BE USED FOR ANY OTHER PROJECT OR FOR ANY OTHER PURPOSE WITHOUT THE WRITTEN PERMISSION OF THE ARCHITECT. ALL RIGHTS ARE RESERVED TO MURRAY ARCHITECTS.

THIS DOCUMENT IS THE PROPERTY OF THE ENGINEER. IT IS TO BE USED ONLY FOR THE PROJECT AND SITE SPECIFICALLY IDENTIFIED HEREON. IT IS NOT TO BE REPRODUCED, COPIED, OR TRANSMITTED IN ANY FORM OR BY ANY MEANS, WITHOUT THE WRITTEN PERMISSION OF THE ENGINEER. ALL RIGHTS ARE RESERVED TO THE ENGINEER.

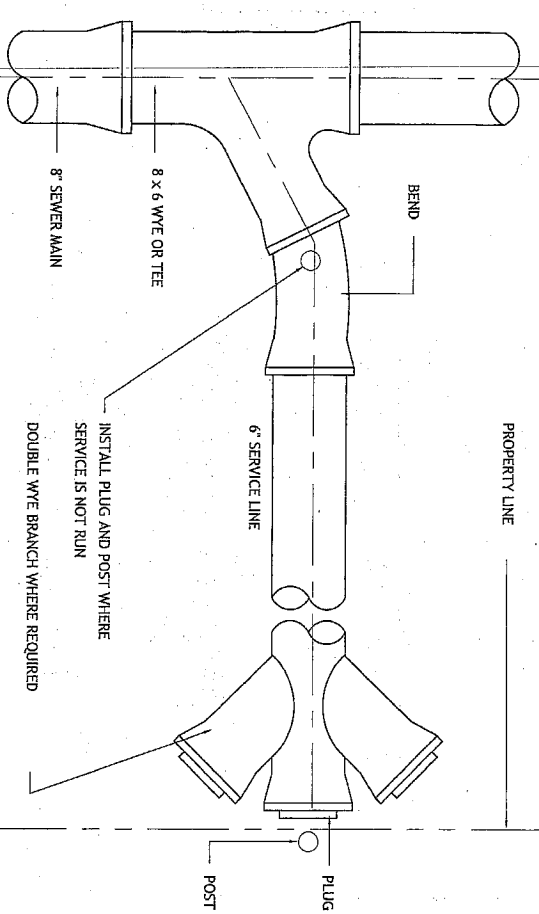
A-1 STANDARD MANHOLE SECTION



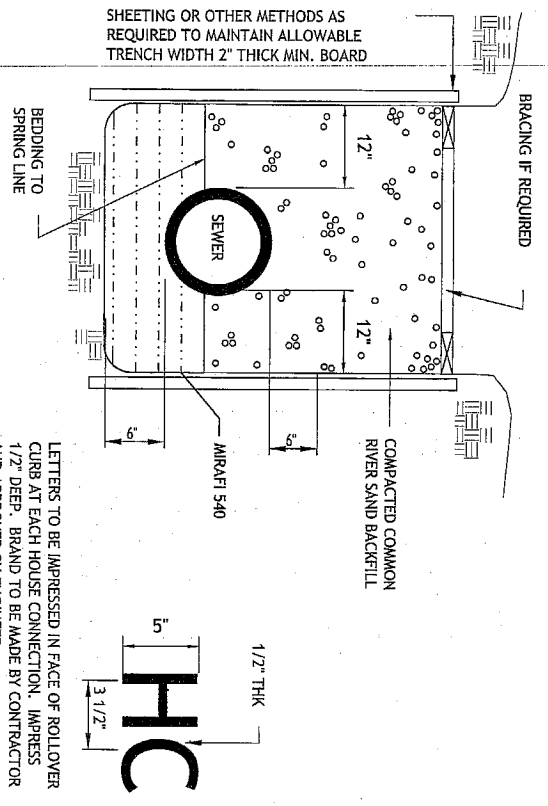
SHEETING OR OTHER METHODS AS REQUIRED TO MAINTAIN ALLOWABLE TRENCH WIDTH 2" THICK MIN. BOARD

NOTE:
5' REFLECTIVE LETTERS

A-9 SERVICE CONNECTION-DIAGRAM



G-9 TRENCH DETAIL AND SEWER CONNECTION LABEL



LETTERS TO BE IMPRESSED IN FACE OF ROLL OVER CURB AT EACH HOUSE CONNECTION. IMPRESS 1/2" DEEP. BRAND TO BE MADE BY CONTRACTOR AND APPROVED BY ENGINEER.



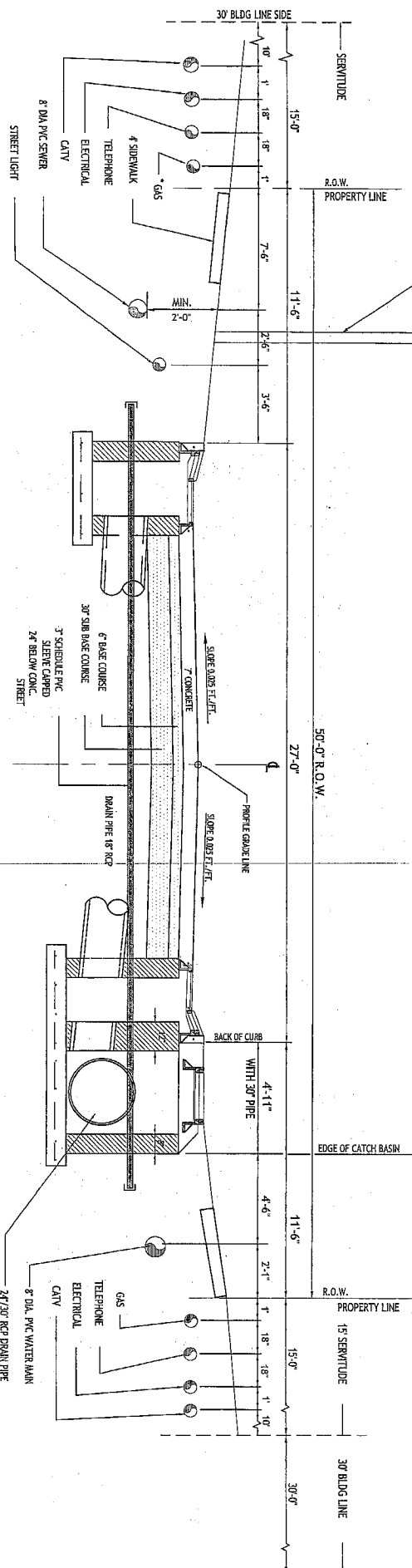
ASHTON OAKS SUBDIVISION
PHASE 3

MURRAY ARCHITECTS
2810 River Road
Gulfport, MS 39507
Tel: (601) 732-7272
Fax: (601) 732-7273

CELESTIAL ARCHITECTURAL
3827 Ridgeway Drive, Metairie, LA 70002
Tel: (504) 885-1189 Fax: (504) 885-1491

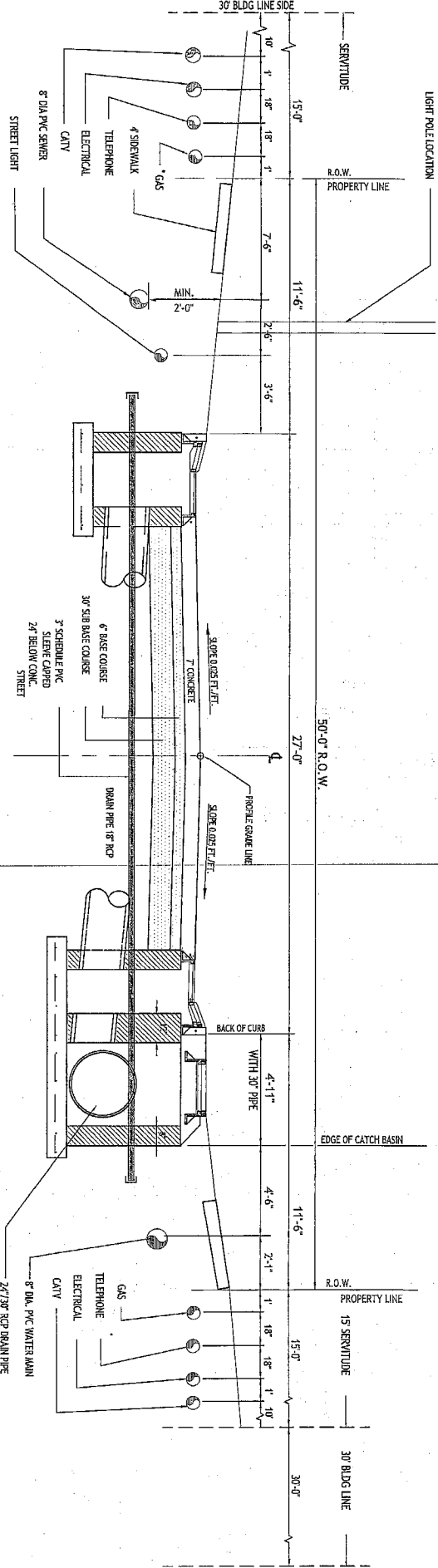
C.1.12

3000 LB CONC. SIDEWALK NOT TO BE INSTALLED BY CONTRACTOR SELECTED TO DO STREET WORK, HOWEVER, BY INDIVIDUAL LOT OWNERS AS PART OF THE DEVELOPMENT. EXPANSION JOINTS WILL BE PROVIDED EVERY 100 FEET AND CONTRACTION JOINTS WILL BE SPACED EVERY 4 FEET. LIGHT POLE LOCATIONS SEE LIGHTING PLAN



J-1 TYPICAL CROSS SECTION AT CONNECTOR STREETS

N.T.S.



J-1 TYPICAL STREET CROSS SECTION

N.T.S.



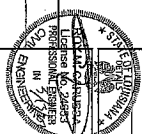
3521 BULLOCK ROAD
FACED BY BRIDGE BLVD
PHOENIX, AZ 85018
PH: (602) 998-1400 FAX: (602) 998-1493



13783 Olive Road
Scottsdale, AZ 85259
(602) 714-7272
Fax: (602) 714-7292

| NO. | DATE | DESCRIPTION |
|-----|------|-------------|
| 1 | | |
| 2 | | |
| 3 | | |
| 4 | | |
| 5 | | |
| 6 | | |

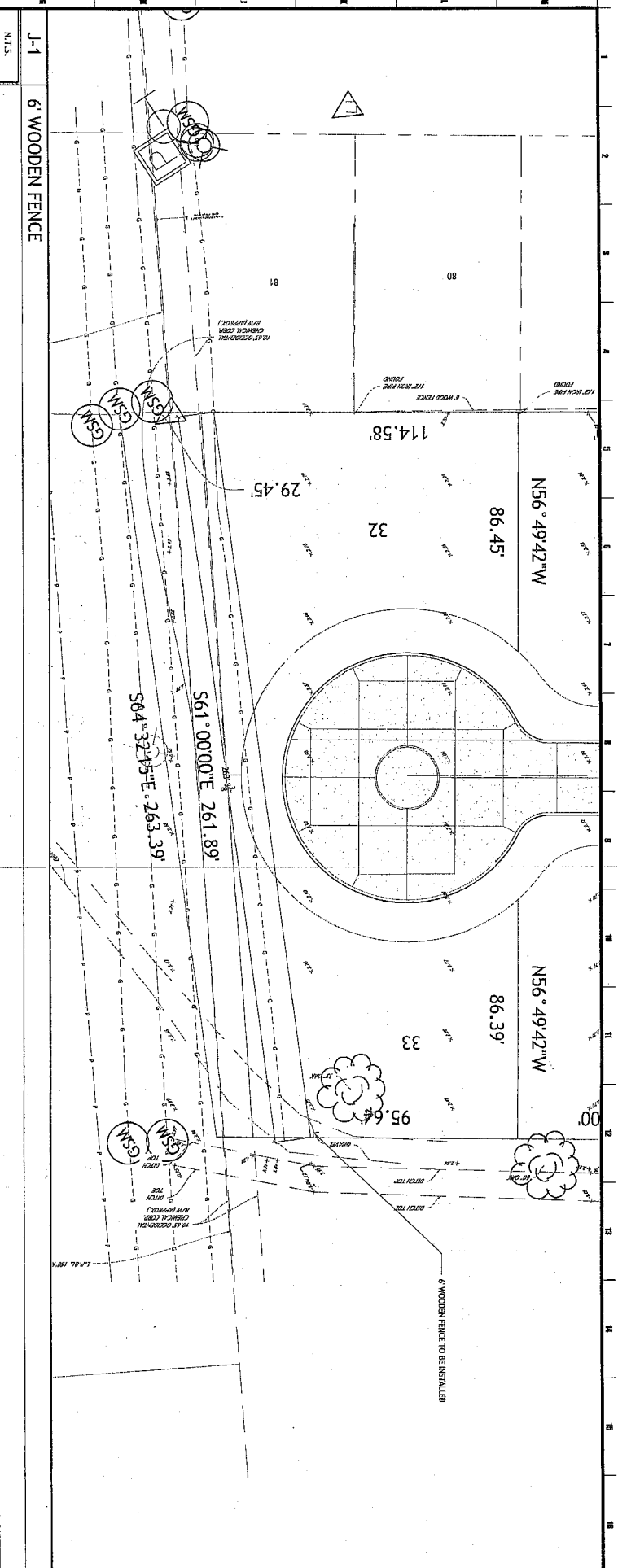
ASHTON OAKS SUBDIVISION
PHASE 3



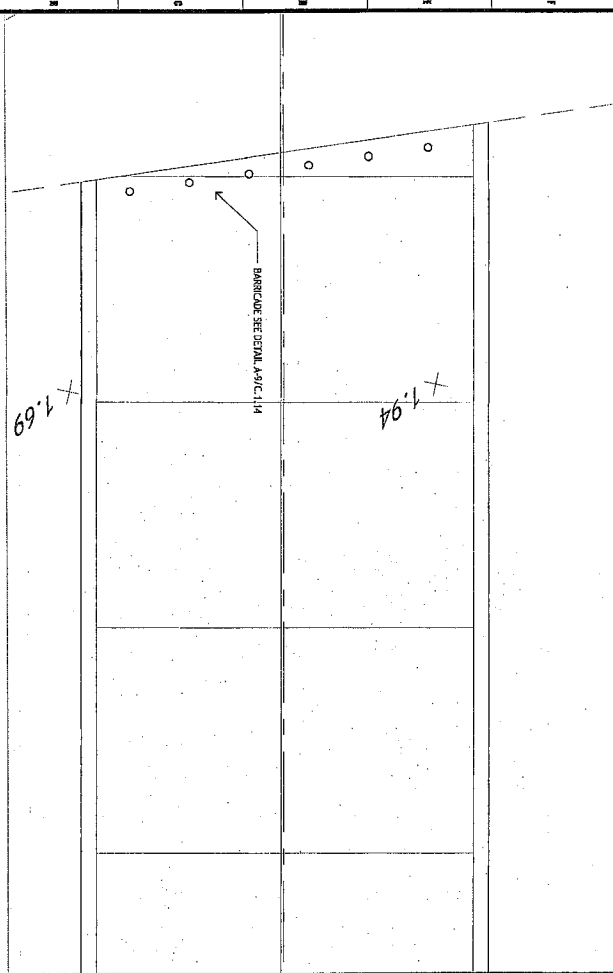
1308
02.06.2011
design development

C.1.13

Copyright © 2014 Murray Architects, Inc. All rights reserved. This document is the property of Murray Architects, Inc. and is not to be reproduced, stored in a retrieval system, or transmitted in any form or by any means, electronic, mechanical, photocopying, recording, or by any information storage and retrieval system, without the prior written approval and permission of Murray Architects, Inc. The reproduction of these documents must be authorized by the architect. All rights are reserved to Murray Architects.

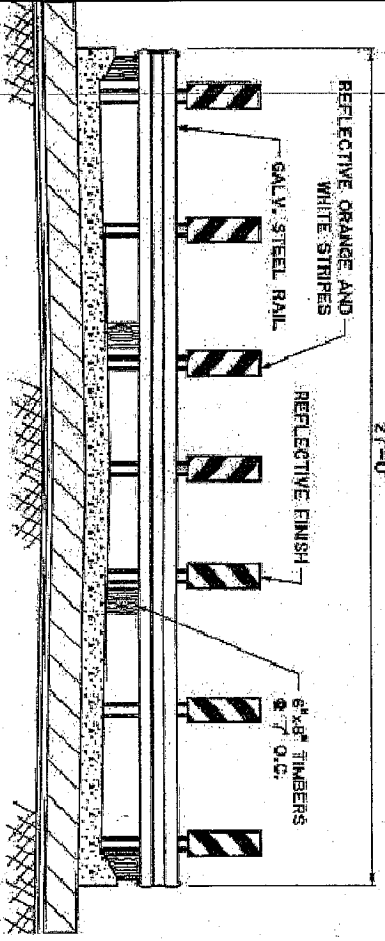


J-1
6' WOODEN FENCE
N.T.S.



A-1
STREET BARRICADE
N.T.S.

A-9
STREET BARRICADE
N.T.S.



3621 Ridgewood Drive, Metairie, LA 70002
Ph: (504)888-1480 Fax: (504)888-1481

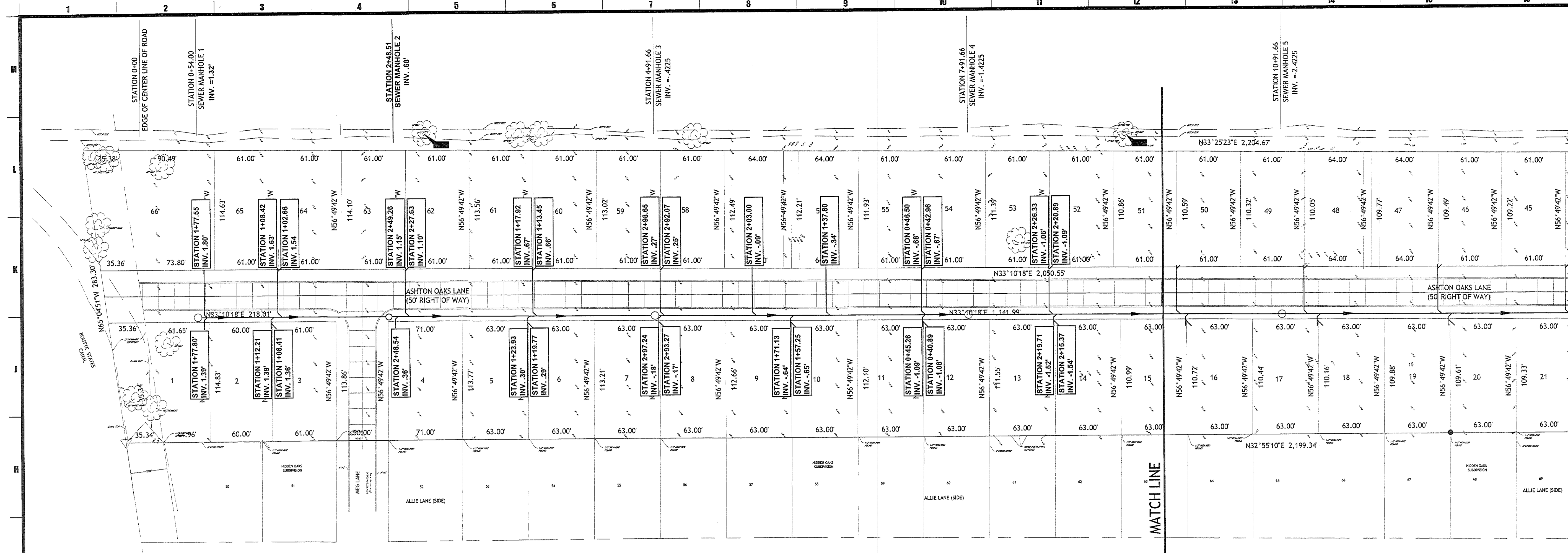


MURRAY
ARCHITECTS

ASHTON OAKS SUBDIVISION
PHASE 3

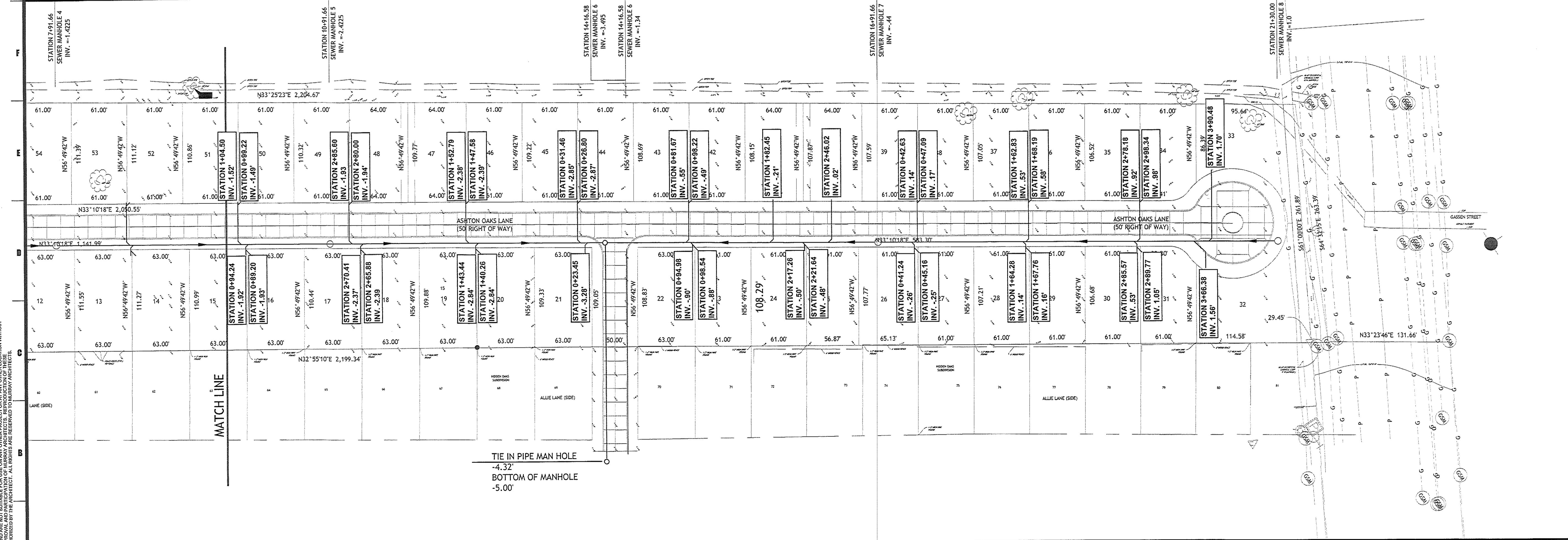
| NO. | REVISIONS | DATE |
|-----|-----------|------|
| 1 | | |
| 2 | | |
| 3 | | |
| 4 | | |
| 5 | | |

C.1.14



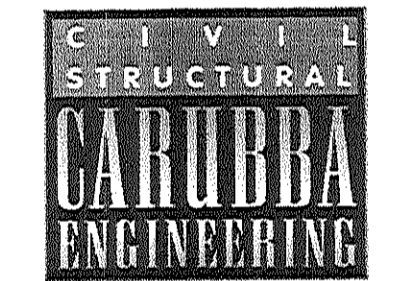
G-1 SEWER PLAN A

1"=50'



A-1 SEWER PLAN B

1"=50'



3621 Ridgeway Drive, Metairie, LA 70002
 Ph: (504)888-1490 Fax: (504)888-1491



1310 River Road
 Metairie, LA 70001
 (985) 884-1275
 fax: (985) 725-0182

**COPY
 N.T.S.**

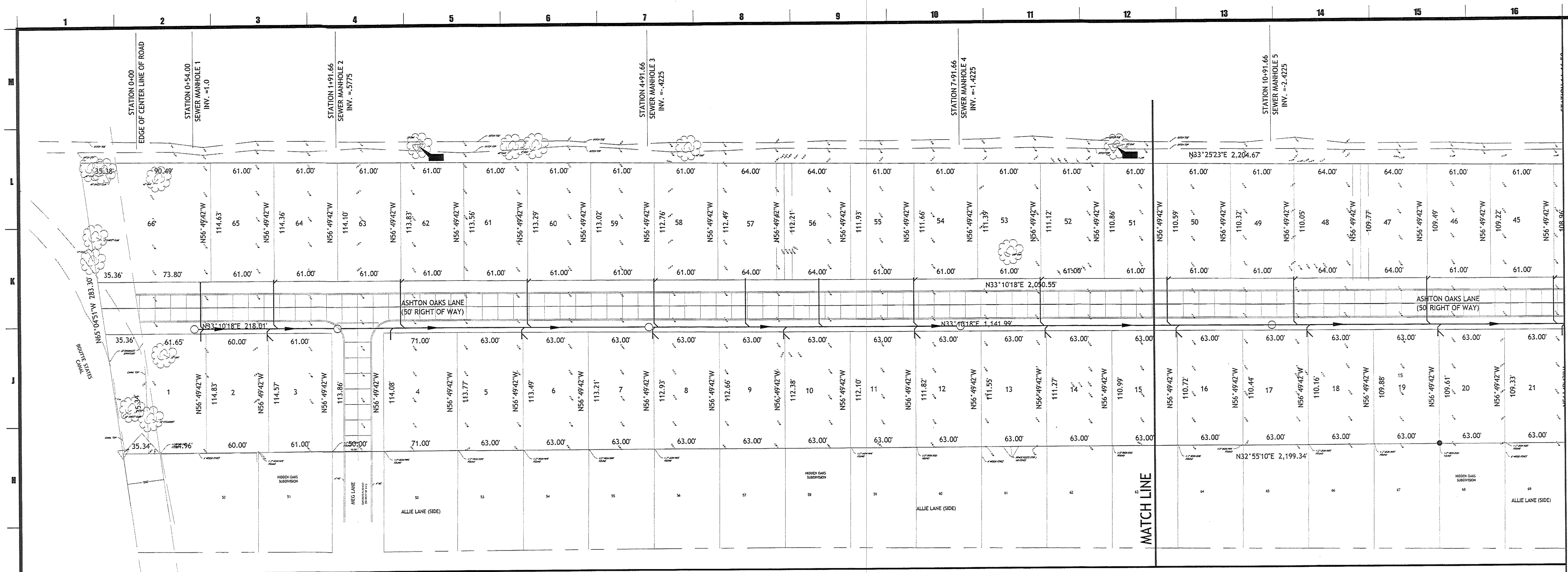
| no. | revisions | date |
|-----|-----------|------|
| 1 | | |
| 2 | | |
| 3 | | |
| 4 | | |
| 5 | | |
| 6 | | |

**ASHTON OAKS SUBDIVISION
 PHASE 3**

SEWER PLAN

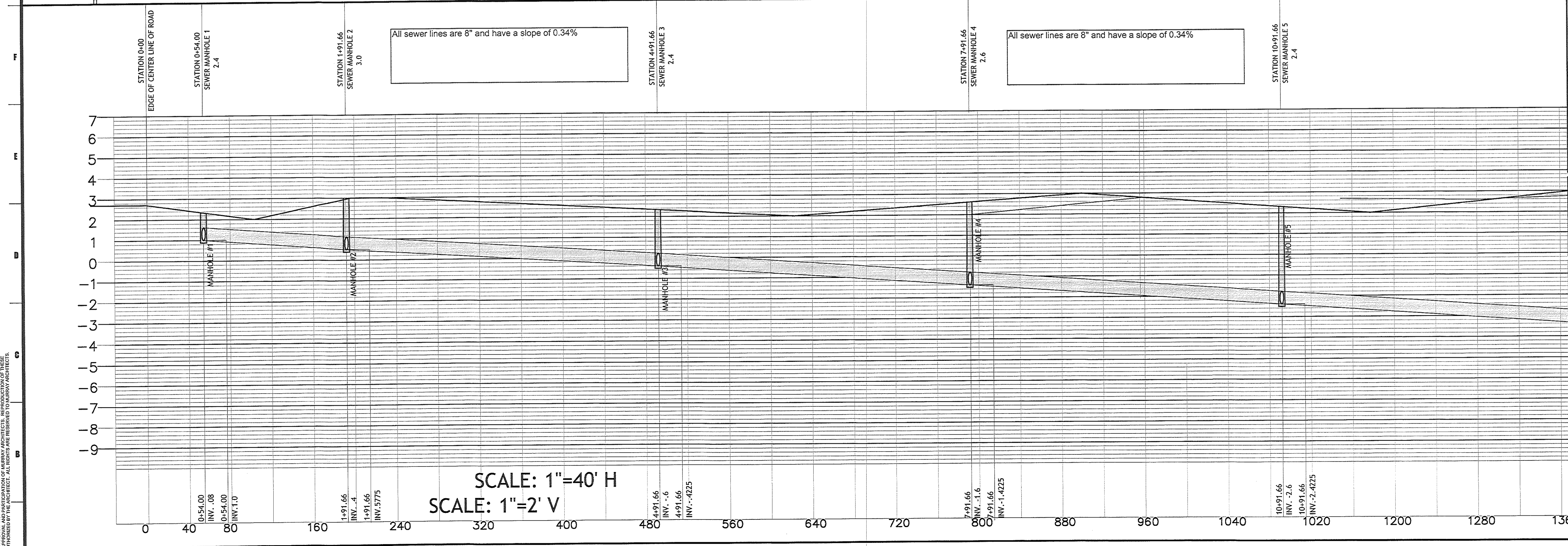
| | |
|-----------------------------|--------------------------------|
| | drawing number C.1.6 |
| project number 1506 | |
| date 05.06.2016 | |
| phase design development | |

THESE DOCUMENTS ARE PRODUCED BY MURRAY ARCHITECTS, INC. IN THE STATE OF LOUISIANA. THE ENGINEER'S PROFESSIONAL SEAL AND LICENSE NUMBER ARE REQUIRED BY LAW. THE ENGINEER'S SIGNATURE AND LICENSE NUMBER MUST BE PLACED ON ALL DRAWINGS. THE ENGINEER'S SIGNATURE AND LICENSE NUMBER MUST BE PLACED ON ALL DRAWINGS. THE ENGINEER'S SIGNATURE AND LICENSE NUMBER MUST BE PLACED ON ALL DRAWINGS.

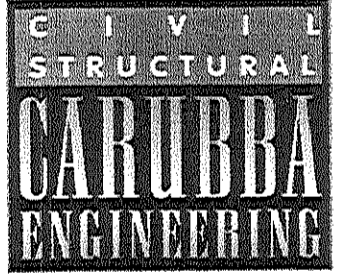


G-1 SEWER PLAN A

1"=50'



SCALE: 1"=40' H
SCALE: 1"=2' V



3621 Ridgeway Drive, Metairie, LA 70002
Ph: (504)888-1490 Fax: (504)888-1491



1300 Over road
Detroit, MI 48207
(857)84-7775
fax (857)75-0182

**COPY
N.T.S.**

| no. | revisions | date |
|-----|-----------|------|
| 1 | | |
| 2 | | |
| 3 | | |
| 4 | | |
| 5 | | |
| 6 | | |

ASHTON OAKS SUBDIVISION
PHASE 3

PLAN AND PROFILE SHEET



drawing number
1506

date
05.06.2016

C.1.6a

THIS PLAN IS THE PROPERTY OF MURRAY ARCHITECTS. IT IS TO BE USED ONLY FOR THE PROJECT AND LOCATION SPECIFICALLY IDENTIFIED HEREON AND IS NOT TO BE REPRODUCED OR USED FOR ANY OTHER PROJECT OR LOCATION WITHOUT THE WRITTEN PERMISSION OF MURRAY ARCHITECTS. ALL RIGHTS ARE RESERVED TO MURRAY ARCHITECTS.

A-1 SEWER PROFILE A