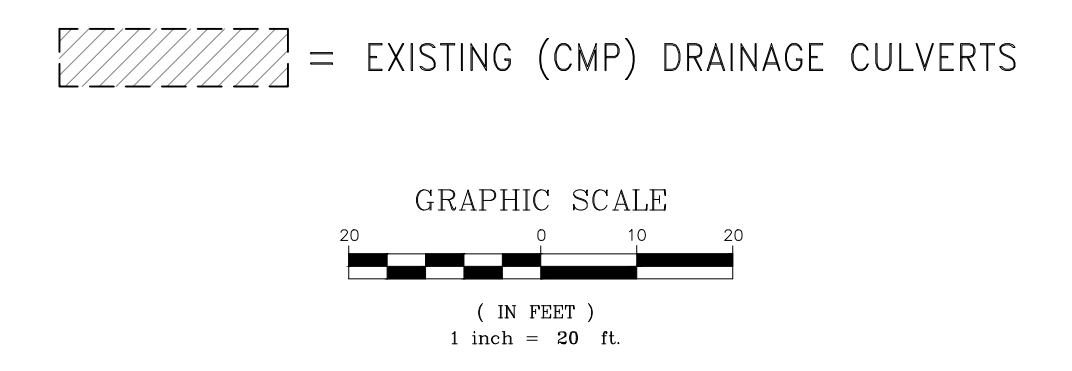
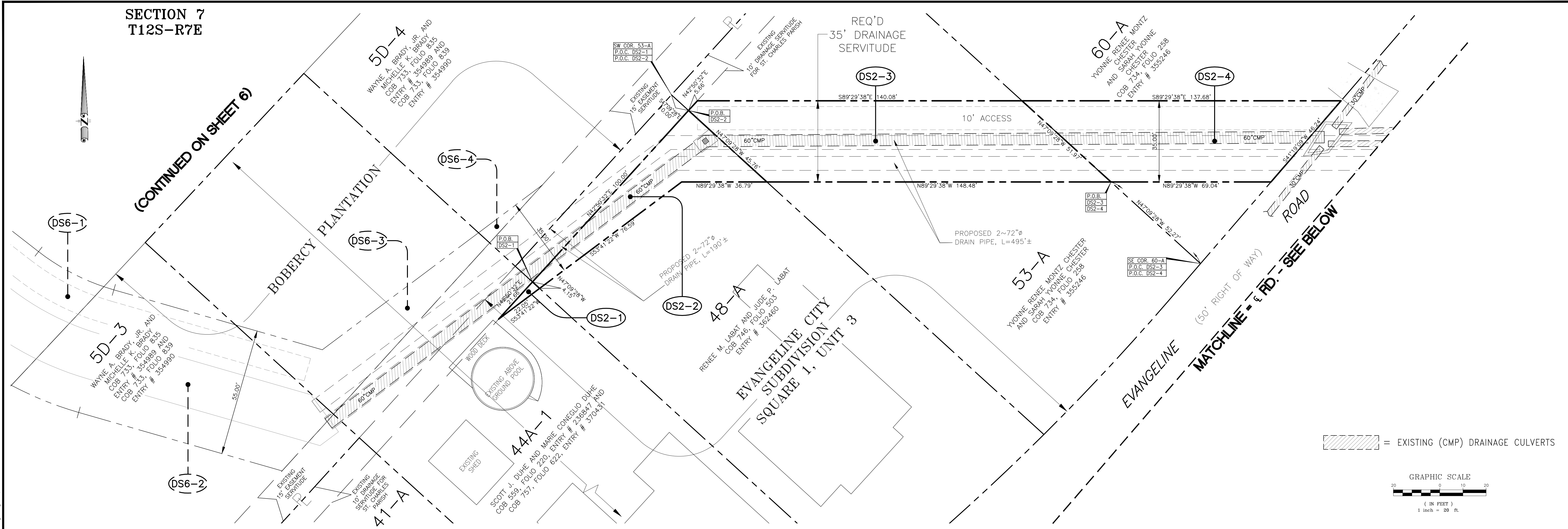
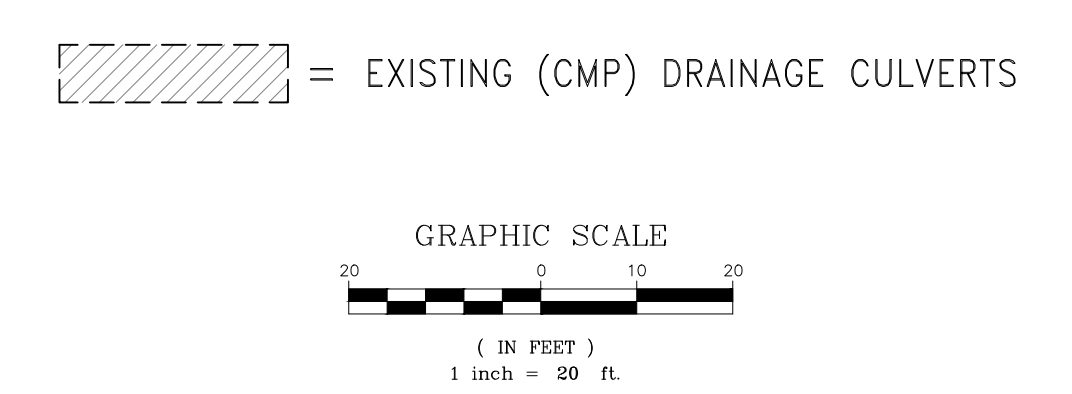
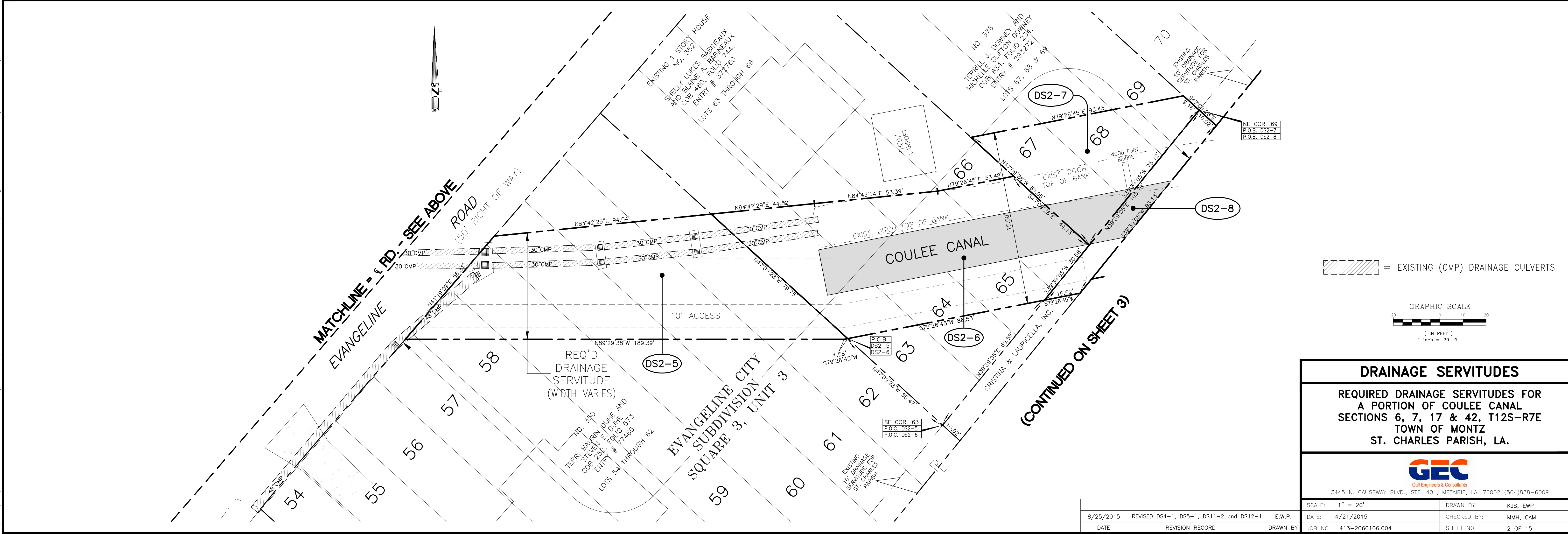


SECTION 7
T12S-R7E

(CONTINUED ON SHEET 6)



MATCHLINE - & RD. - SEE ABOVE
EVANGELINE ROAD (50' RIGHT OF WAY)



DRAINAGE SERVITUDES

REQUIRED DRAINAGE SERVITUDES FOR
A PORTION OF COULEE CANAL
SECTIONS 6, 7, 17 & 42, T12S-R7E
TOWN OF MONTZ
ST. CHARLES PARISH, LA.

GEC
Gulf Engineers & Consultants
3445 N. CAUSEWAY BLVD., STE. 401, METAIRIE, LA. 70002 (504)838-6009

8/25/2015	REVISED DS4-1, DS5-1, DS11-2 and DS12-1	E.W.P.	SCALE: 1" = 20'
DATE	REVISION RECORD	DRAWN BY	CHECKED BY: MMH, CAM
			JOB NO. 413-206106.004
			SHEET NO. 2 OF 15

G:\DWGSET\413\005\206106.004_Coulee_Canal_Improvements\DWG - Revised 8-25-2015\Coulee_Canal_Reqd_Drainage_Servitudes_with_Geometry_and_Topo_Survey - Revised 8-25-15.dwg Aug 26, 2015 - 8:29am