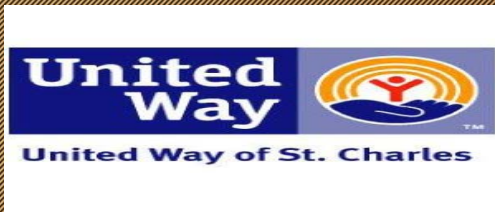




Impacting this community  
with service to others...

THIS IS HOW OUR SERVICES BENEFIT THE COMMUNITY



# FACTS ABOUT OUR SERVICES...

- We have provided services to residents of this community since 1971.
- We currently employ over 140 employees and serve over 125 individuals with intellectual and developmental delays.
- Our services are extended to:
  - Children with disabilities
  - Special needs
  - Adults
  - Elderly
- Our services are partially funded by Medicaid and support from the local United Way.
- We provide fundraisers to support the services and create new service ventures in the community and broaden our population.



# WHAT SERVICES DO WE PROVIDE?

- We offer in home care to residents in this parish to assist with personal care and community support so that they can maintain residency in their own communities.
- We provide supports to help families of children with developmental disabilities in the community.
- We also assist with job support for people with developmental disabilities and intellectual delays
- In partnership with United Way we provide assistance to the families and the elderly in St. Charles Parish with assistance and caregiver services in their own home.
- We assist the Department of Children and Family Services with helping residents in the community applying for SNAP Benefits program.



# IN HOME CARE...



We provide supports to individuals with disabilities and special needs. This includes services for children, adults, and elderly in the community. Staff (Direct Service Workers) are provided to help take care of the person in their own home and community. Therefore they can still be around their family, friends, and community.



# We Provide Support to families in need.....



We provide families with the opportunities to have additional support in the home with their loved ones. Our In home respite and attendance care services are utilized by families with children with special needs and developmental disabilities. They are given support in the home to the individual in personal care, community activities, life skill coaching, and socialization. Many families have seen major growth and development with the services provided by our agency in their homes. Here is one of their stories....Meet Ms. Paulette Tranchant.



# VOCATIONAL SERVICES...

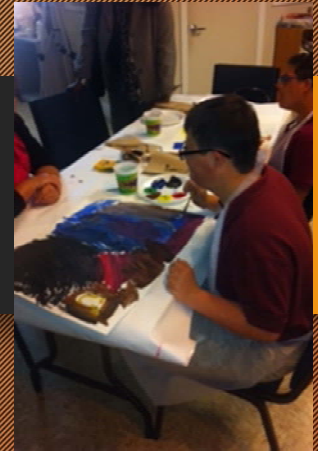


Our programs for employment training include bead world and other activities such as shredding, lawn maintenance, and custodial work. We have ventured out into another business which is our thrift store, Cajun Village. This allows us to have a site to host not only our activities, but to have an additional work opportunity for the people that we serve. This clip is just an example of what type of work our individuals participate in during the day. It allows them to become productive citizens of their community.



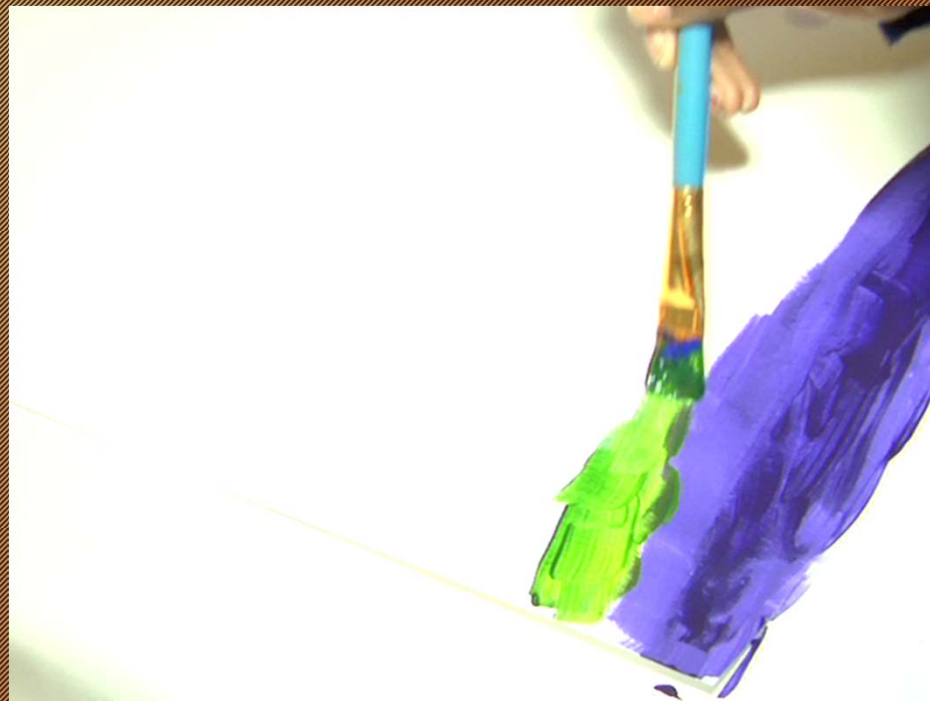
# DAY PROGRAM SERVICES...

Our Day program does not only consist of work training activities, but we highly promote activities that allow our individuals to experience opportunities. These opportunities are ways for them to explore and participate in community activities they may not ever take part in. We attend activities in the community such as: Jazz Fest, Zephyrs game, and a day on the Steamboat Natchez Riverboat . We also offer therapeutic activities at our business locations so people we serve can always have an outlet for their voices to be heard.



# We provide support to people of all ages with disabilities and special needs to find their full potential...

- We create and assist our individuals with opportunities to express their feelings and emotions to ensure that their voice is being heard.
- Here is brief video of our participation in the state wide "Art of Respect" art project.





# WORK TRAINING SERVICES...

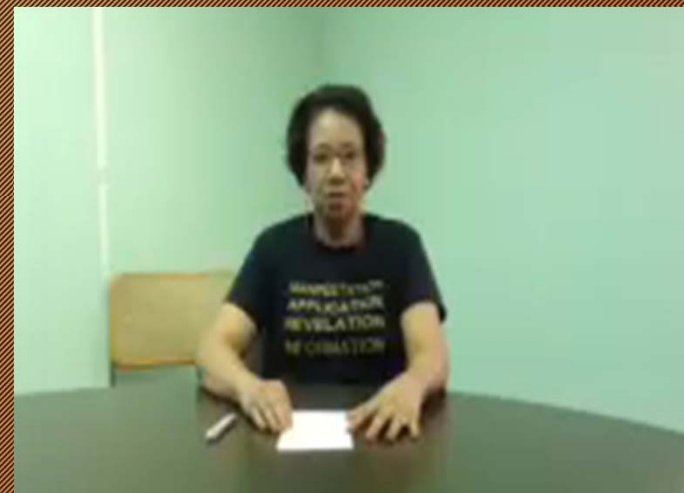


- We have assisted over 75 individuals over the course of 10 years with finding employment in St. Charles Parish.
- These programs allows people with disabilities to be able to be active, contributing citizens in our community.
- This program also helps those who are physically disabled to find employment in careers that are new to them after being unemployed for years. Here's one story...



# OPPORTUNITIES OF GROWTH WITH OUR AGENCY

- Bead World.....



# WHY DO WE NEED HELP?

- In order to effectively address the needs of the community we will need additional support to expand the ever increasing demand for services. Every person that is in need of services based on the Medicaid criteria does not qualify to have the funding for services but are in need of the services that we provide. United Way of St. Charles help a percentage of supports that allows us to provide other services in the community.
- We would like to expand our services to reach all families of different populations of people with disabilities and special needs. This includes expanding respite services for CHILDREN AND ADULTS.
- We would like to continue to support work training programs that can effectively build life skills of those who participate in them. We need support to develop our programs and to have identified locations in the community to address all residents of St. Charles parish.

