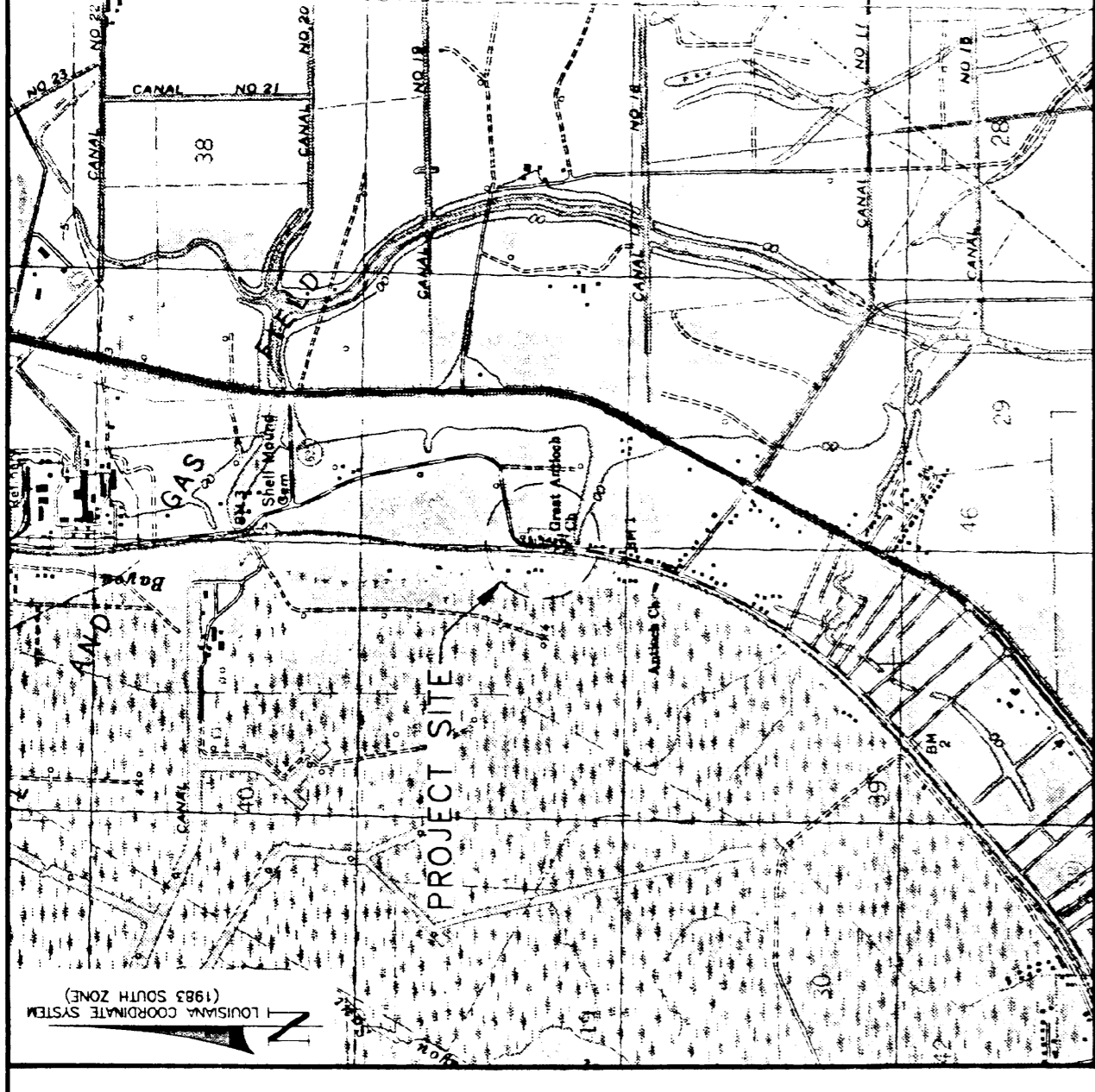


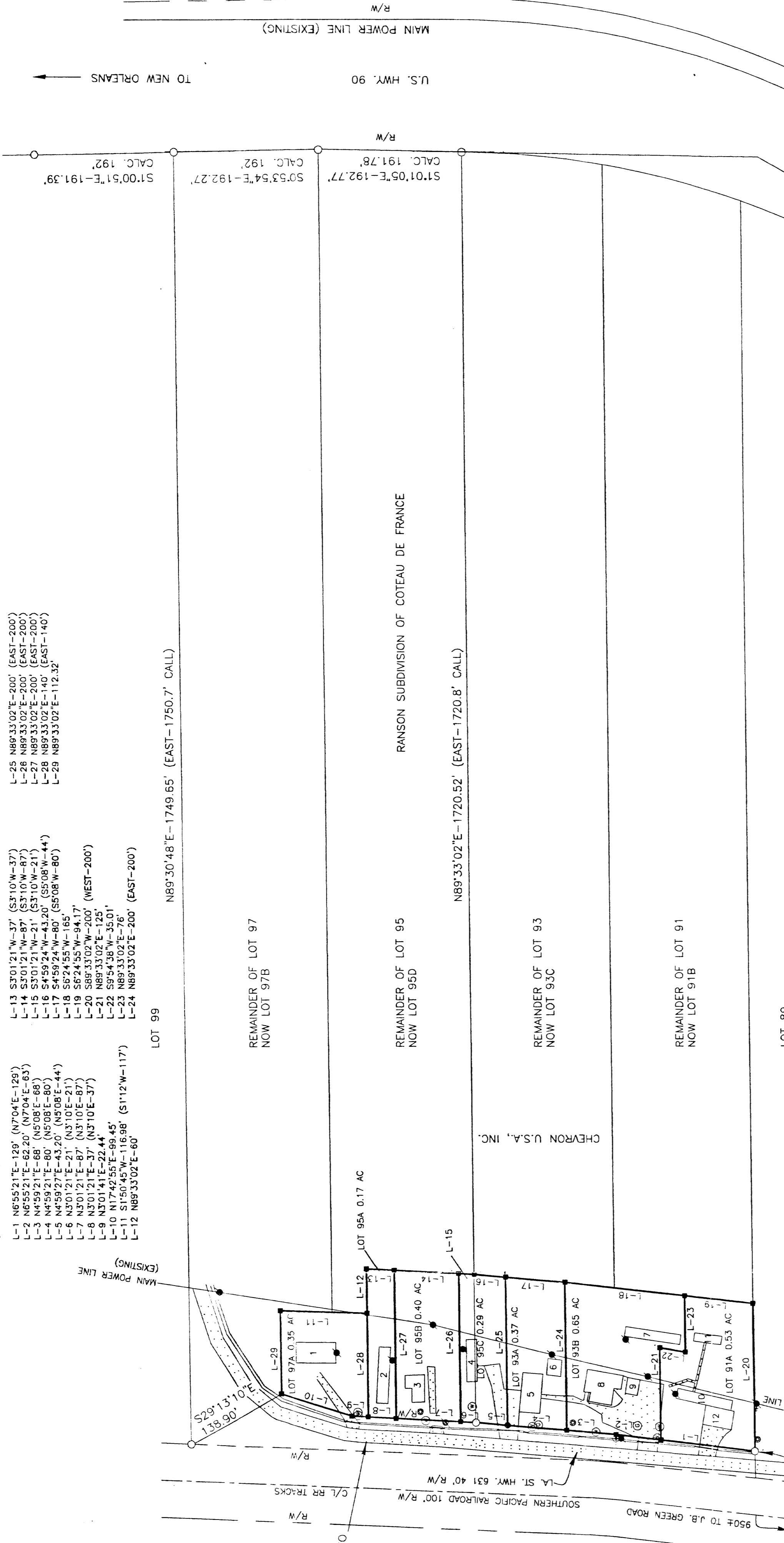
ST. CHARLES PARISH, LOUISIANA
SECTION 39, T14S-R20E



VICINITY MAP
SCALE: 1"=2000'

DESCRIPTION OF LOTS 91A, 93A, 93B, 95A, 95B, 95C AND 97A:

COMMENCING AT PT. A LOCATED AT THE SOUTHWEST CORNER OF LOT 91A BEING COMMON WITH THE EASTERLY RIGHT-OF-WAY LINE OF LA. ST. HWY. 631 SAID POINT BEING THE P.O.B.;
THENCE, NORTHERLY ON AND ALONG THE EASTERLY RIGHT-OF-WAY LINE OF LA. ST. HWY. 631 COMMON WITH THE WESTERLY LINES OF LOTS 91A, 93B, 95A, 95B, 95C, 95D, 95E, 95F, 95G, 95H, 95I, 95J, 95K, 95L, 95M, 95N, 95O, 95P, 95Q, 95R, 95S, 95T, 95U, 95V, 95W, 95X, 95Y, 95Z, 95AA, 95AB, 95AC, 95AD, 95AE, 95AF, 95AG, 95AH, 95AI, 95AJ, 95AK, 95AL, 95AM, 95AN, 95AO, 95AP, 95AQ, 95AR, 95AS, 95AT, 95AU, 95AV, 95AW, 95AX, 95AY, 95AZ, 95BA, 95BB, 95BC, 95BD, 95BE, 95BF, 95BG, 95BH, 95BI, 95BJ, 95BK, 95BL, 95BM, 95BN, 95BO, 95BP, 95BQ, 95BR, 95BS, 95BT, 95BU, 95BV, 95BW, 95BX, 95BY, 95BZ, 95CA, 95CB, 95CC, 95CD, 95CE, 95CF, 95CG, 95CH, 95CI, 95CJ, 95CK, 95CL, 95CM, 95CN, 95CO, 95CP, 95CQ, 95CR, 95CS, 95CT, 95CU, 95CV, 95CW, 95CX, 95CY, 95CZ, 95DA, 95DB, 95DC, 95DD, 95DE, 95DF, 95DG, 95DH, 95DI, 95DJ, 95DK, 95DL, 95DM, 95DN, 95DO, 95DP, 95DQ, 95DR, 95DS, 95DT, 95DU, 95DV, 95DW, 95DX, 95DY, 95DZ, 95EA, 95EB, 95EC, 95ED, 95EE, 95EF, 95EG, 95EH, 95EI, 95EJ, 95EK, 95EL, 95EM, 95EN, 95EO, 95EP, 95EQ, 95ER, 95ES, 95ET, 95EU, 95EV, 95EW, 95EX, 95EY, 95EZ, 95FA, 95FB, 95FC, 95FD, 95FE, 95FF, 95FG, 95FH, 95FI, 95FJ, 95FK, 95FL, 95FM, 95FN, 95FO, 95FP, 95FQ, 95FR, 95FS, 95FT, 95FU, 95FV, 95FW, 95FX, 95FY, 95FZ, 95GA, 95GB, 95GC, 95GD, 95GE, 95GF, 95GG, 95GH, 95GI, 95GJ, 95GK, 95GL, 95GM, 95GN, 95GO, 95GP, 95GQ, 95GR, 95GS, 95GT, 95GU, 95GV, 95GW, 95GX, 95GY, 95GZ, 95HA, 95HB, 95HC, 95HD, 95HE, 95HF, 95HG, 95HH, 95HI, 95HJ, 95HK, 95HL, 95HM, 95HN, 95HO, 95HP, 95HQ, 95HR, 95HS, 95HT, 95HU, 95HV, 95HW, 95HX, 95HY, 95HZ, 95IA, 95IB, 95IC, 95ID, 95IE, 95IF, 95IG, 95IH, 95II, 95IJ, 95IK, 95IL, 95IM, 95IN, 95IO, 95IP, 95IQ, 95IR, 95IS, 95IT, 95IU, 95IV, 95IW, 95IX, 95IY, 95IZ, 95JA, 95JB, 95JC, 95JD, 95JE, 95JF, 95JG, 95JH, 95JI, 95JJ, 95JK, 95JL, 95JM, 95JN, 95JO, 95JP, 95JQ, 95JR, 95JS, 95JT, 95JU, 95JV, 95JW, 95JX, 95JY, 95JZ, 95KA, 95KB, 95KC, 95KD, 95KE, 95KF, 95KG, 95KH, 95KI, 95KJ, 95KK, 95KL, 95KM, 95KN, 95KO, 95KP, 95KQ, 95KR, 95KS, 95KT, 95KU, 95KV, 95KW, 95KX, 95KY, 95KZ, 95LA, 95LB, 95LC, 95LD, 95LE, 95LF, 95LG, 95LH, 95LI, 95LJ, 95LK, 95LL, 95LM, 95LN, 95LO, 95LP, 95LQ, 95LR, 95LS, 95LT, 95LU, 95LV, 95LW, 95LX, 95LY, 95LZ, 95MA, 95MB, 95MC, 95MD, 95ME, 95MF, 95MG, 95MH, 95MI, 95MJ, 95MK, 95ML, 95MN, 95MO, 95MP, 95MQ, 95MR, 95MS, 95MT, 95MU, 95MV, 95MW, 95MX, 95MY, 95MZ, 95NA, 95NB, 95NC, 95ND, 95NE, 95NF, 95NG, 95NH, 95NI, 95NJ, 95NK, 95NL, 95NM, 95NO, 95NP, 95NQ, 95NR, 95NS, 95NT, 95NU, 95NV, 95NW, 95NX, 95NY, 95NZ, 95OA, 95OB, 95OC, 95OD, 95OE, 95OF, 95OG, 95OH, 95OI, 95OJ, 95OK, 95OL, 95OM, 95ON, 95OO, 95OP, 95OQ, 95OR, 95OS, 95OT, 95OU, 95OV, 95OW, 95OX, 95OY, 95OZ, 95PA, 95PB, 95PC, 95PD, 95PE, 95PF, 95PG, 95PH, 95PI, 95PJ, 95PK, 95PL, 95PM, 95PN, 95PO, 95PP, 95PQ, 95PR, 95PS, 95PT, 95PU, 95PV, 95PW, 95PX, 95PY, 95PZ, 95QA, 95QB, 95QC, 95QD, 95QE, 95QF, 95QG, 95QH, 95QI, 95QJ, 95QK, 95QL, 95QM, 95QN, 95QO, 95QP, 95QQ, 95QR, 95QS, 95QT, 95QU, 95QV, 95QW, 95QX, 95QY, 95QZ, 95RA, 95RB, 95RC, 95RD, 95RE, 95RF, 95RG, 95RH, 95RI, 95RJ, 95RK, 95RL, 95RM, 95RN, 95RO, 95RP, 95RQ, 95RR, 95RS, 95RT, 95RU, 95RV, 95RW, 95RX, 95RY, 95RZ, 95SA, 95SB, 95SC, 95SD, 95SE, 95SF, 95SG, 95SH, 95SI, 95SJ, 95SK, 95SL, 95SM, 95SN, 95SO, 95SP, 95SQ, 95SR, 95SS, 95ST, 95SU, 95SV, 95SW, 95SX, 95SY, 95SZ, 95TA, 95TB, 95TC, 95TD, 95TE, 95TF, 95TG, 95TH, 95TI, 95TJ, 95TK, 95TL, 95TM, 95TN, 95TO, 95TP, 95TQ, 95TR, 95TS, 95TU, 95TV, 95TW, 95TX, 95TY, 95TZ, 95UA, 95UB, 95UC, 95UD, 95UE, 95UF, 95UG, 95UH, 95UI, 95UJ, 95UK, 95UL, 95UM, 95UN, 95UO, 95UP, 95UQ, 95UR, 95US, 95UT, 95UU, 95UV, 95UW, 95UX, 95UY, 95UZ, 95VA, 95VB, 95VC, 95VD, 95VE, 95VF, 95VG, 95VH, 95VI, 95VJ, 95VK, 95VL, 95VM, 95VN, 95VO, 95VP, 95VQ, 95VR, 95VS, 95VT, 95VU, 95VV, 95VW, 95VX, 95VY, 95VZ, 95WA, 95WB, 95WC, 95WD, 95WE, 95WF, 95WG, 95WH, 95WI, 95WJ, 95WK, 95WL, 95WM, 95WN, 95WO, 95WP, 95WQ, 95WR, 95WS, 95WT, 95WU, 95WV, 95WW, 95WX, 95WY, 95WZ, 95XA, 95XB, 95XC, 95XD, 95XE, 95XF, 95XG, 95XH, 95XI, 95XJ, 95XK, 95XL, 95XM, 95XN, 95XO, 95XP, 95XQ, 95XR, 95XS, 95XT, 95XU, 95XV, 95XW, 95XX, 95XY, 95XZ, 95YA, 95YB, 95YC, 95YD, 95YE, 95YF, 95YG, 95YH, 95YI, 95YJ, 95YK, 95YL, 95YM, 95YN, 95YO, 95YP, 95YQ, 95YR, 95YS, 95YT, 95YU, 95YV, 95YW, 95YX, 95YY, 95YZ, 95ZA, 95ZB, 95ZC, 95ZD, 95ZE, 95ZF, 95ZG, 95ZH, 95ZI, 95ZJ, 95ZK, 95ZL, 95ZM, 95ZN, 95ZO, 95ZP, 95ZQ, 95ZR, 95ZS, 95ZT, 95ZU, 95ZV, 95ZW, 95ZX, 95ZY, 95ZZ.



- LEGEND:
- ⊙ WATER METER
 - ⊙ POWER POLE
 - ⊙ EXISTING IRON PIPE
 - ⊙ GAS METER
 - ⊙ SEWER MAIN
 - ⊙ FIRE HYDRANT
 - ⊙ FENCE
 - ⊙ CULVERT
 - ⊙ DRIVEWAY/ROAD
 - ⊙ SET 3/4" IRON ROD
 - ⊙ SET NAIL IN CONCRETE DRIVEWAY
 - ⊙ LA. ST. HWY. 631 TO BE DEDICATED TO THE STATE OF LOUISIANA

- 1) 28' X 53' MOBILE HOME
- 2) 15' X 76' MOBILE HOME
- 3) 26' X 37' FRAME HOUSE
- 4) 27' X 54' FRAME HOUSE
- 5) 27' X 54' FRAME HOUSE
- 6) 20' X 22' SHED
- 7) 14' X 76' MOBILE HOME
- 8) 14' X 76' MOBILE HOME
- 9) 14' X 50' FRAME HOUSE
- 10) 14' X 77' MOBILE HOME
- 11) 11' X 38' SHED
- 12) 26' X 40' CARPORT

REFERENCE MAPS:

- 1) MAP FOR "THE TEXAS COMPANY SURVEY MAP RANSON SUBDIVISION OF COTEAU DE FRANCE PORTION OF TWP 14S R20E ST. CHARLES PARISH LOUISIANA" DATED JULY 1940.
- 2) "PLAT SHOWING A 0.17 ACRE TRACT OF LAND BELONGING TO TEXACO EXPLORATION AND PRODUCTION INC. LOCATED IN LOTS 91 AND 93 OF THE RANSON SUBDIVISION OF COTEAU DE FRANCE IN SECTION 39, T14S-R20E ST. CHARLES, LOUISIANA" DATED 2-13-97 BY THE SURVEY/SITE PREP TEAM.
- 3) "PLAT SHOWING A 0.40 ACRE TRACT OF LAND BELONGING TO TEXACO EXPLORATION AND PRODUCTION INC. LOCATED IN LOT 95 OF THE RANSON SUBDIVISION OF COTEAU DE FRANCE IN SECTION 39, T14S-R20E ST. CHARLES, LOUISIANA" DATED 2-26-97 BY THE SURVEY/SITE PREP TEAM.
- 4) "PLAT SHOWING A 0.30 ACRE TRACT OF LAND BELONGING TO TEXACO EXPLORATION AND PRODUCTION INC. LOCATED IN LOTS 91 AND 93 OF THE RANSON SUBDIVISION OF COTEAU DE FRANCE IN SECTION 39, T14S-R20E ST. CHARLES, LOUISIANA" DATED 2-26-97 BY THE SURVEY/SITE PREP TEAM.
- 5) "PLAT SHOWING A 0.37 ACRE TRACT OF LAND BELONGING TO TEXACO EXPLORATION AND PRODUCTION INC. LOCATED IN LOT 93 OF THE RANSON SUBDIVISION OF COTEAU DE FRANCE IN SECTION 39, T14S-R20E ST. CHARLES, LOUISIANA" DATED 2-26-97 BY THE SURVEY/SITE PREP TEAM.
- 6) "PLAT SHOWING A 0.60 ACRE TRACT OF LAND BELONGING TO TEXACO EXPLORATION AND PRODUCTION INC. LOCATED IN LOTS 91 AND 93 OF THE RANSON SUBDIVISION OF COTEAU DE FRANCE IN SECTION 39, T14S-R20E ST. CHARLES, LOUISIANA" DATED 2-26-97 BY THE SURVEY/SITE PREP TEAM.
- 7) "PLAT SHOWING A 0.59 ACRE TRACT OF LAND BELONGING TO TEXACO EXPLORATION AND PRODUCTION INC. LOCATED IN LOT 91 OF THE RANSON SUBDIVISION OF COTEAU DE FRANCE IN SECTION 39, T14S-R20E ST. CHARLES, LOUISIANA" DATED 2-26-97 BY THE SURVEY/SITE PREP TEAM.
- 8) "SURVEY OF A 0.378 ACRE TRACT LOCATED IN LOTS 95 & 97 OF THE COTEAU DE FRANCE, OR RANSON TRACT IN SECTION 39, TOWNSHIP 14 SOUTH, RANGE 20 EAST, NEAR DES ALLEMANDES, ST. CHARLES PARISH, LA." DATED 3-2-99 BY R.P. BERNARD.

THIS IS TO CERTIFY THAT THIS SURVEY WAS DONE BY ME OR UNDER MY DIRECT SUPERVISION AND CONTROL. THE SURVEY WAS DONE ON THE GROUND AND WAS DONE IN ACCORDANCE WITH THE RULES AND REGULATIONS OF THE BOARD OF SURVEYING AND MAPPING ENGINEERS FOR THE STATE OF LOUISIANA. BOARD OF REGISTRATION FOR PROFESSIONAL ENGINEERS AND LAND SURVEYORS AND THAT THE ACCURACY SPECIFICATIONS AND POSITIVE TOLERANCES ARE IN ACCORDANCE WITH THE RULES AND REGULATIONS OF THE BOARD OF SURVEYING AND MAPPING ENGINEERS. THIS SURVEY DOES NOT INCLUDE RESEARCH AND INVESTIGATION OF SERVITUDES.

THE BEARINGS INDICATED HEREON WERE DERIVED FROM A GPS STATIC SURVEY
ANGLES, BEARINGS AND DISTANCES SHOWN IN PARENTHESIS REPRESENT DATA OBTAINED FROM A GPS STATIC SURVEY REFERENCE MAP LISTED IN ITEM 1.

THE FIELD SURVEY WAS CONDUCTED IN JULY THRU DECEMBER 2005 AND JANUARY THRU FEBRUARY 2006.

ALL PROPERTY CORNERS WERE SET WITH 3/4" IRON RODS EXCEPT AS NOTED.



APPROVED: DAVID E. WOOD, P.E., LOUISIANA REGISTRATION NO. 4561
SURVEYOR
THIS DOCUMENT IS THE PROPERTY OF THE SURVEYING AND MAPPING ENGINEERS BOARD OF REGISTRATION. IT CONTAINS THE ORIGINAL SIGNATURE AND CERTIFICATION STAMP OF THE SURVEYOR. IT IS TO BE KEPT IN THE ORIGINAL FILE OF THE SURVEY. IT IS NOT TO BE REPRODUCED OR COPIED IN ANY MANNER WITHOUT THE WRITTEN AUTHORIZATION OF THE SURVEYING PROFESSIONAL WILL VOID THIS CERTIFICATION.

CHAIRMAN, PLANNING & ZONING COMMISSION DATE
CHAIRMAN, ST. CHARLES PARISH COUNCIL DATE
PARISH PRESIDENT DATE

J. B. GREEN NORTH SUBDIVISION
RESUBDIVISION OF LOTS 91, 93, 95 AND 97 INTO LOTS 91A, 91B, 93A, 93B, 93C, 95A, 95B, 95C, 95D, 97A & 97B OF THE RANSON SUBDIVISION OF COTEAU DE FRANCE, SECTION 39, T14S-R20E, DES ALLEMANDES, ST. CHARLES PARISH, LOUISIANA.

MOORE & HOBERT, Inc.
SURVEYING • ENGINEERING • LAND MANAGEMENT SERVICES • FIELD SERVICES • CAD
P.O. BOX 109, 700 SOUTH WALKER, HOUMA, LOUISIANA 70301 (800) 979-7470
FURNISHED: HOUMA, LA. (504) 835-1111; MONROE, LA. (504) 235-1111

DRAWN BY: DMB
CHECKED BY: DEC
SCALE: 1"=100'
DATE: 2-13-06
JOB NO: 8351
DATA BASE: 8351top000300

