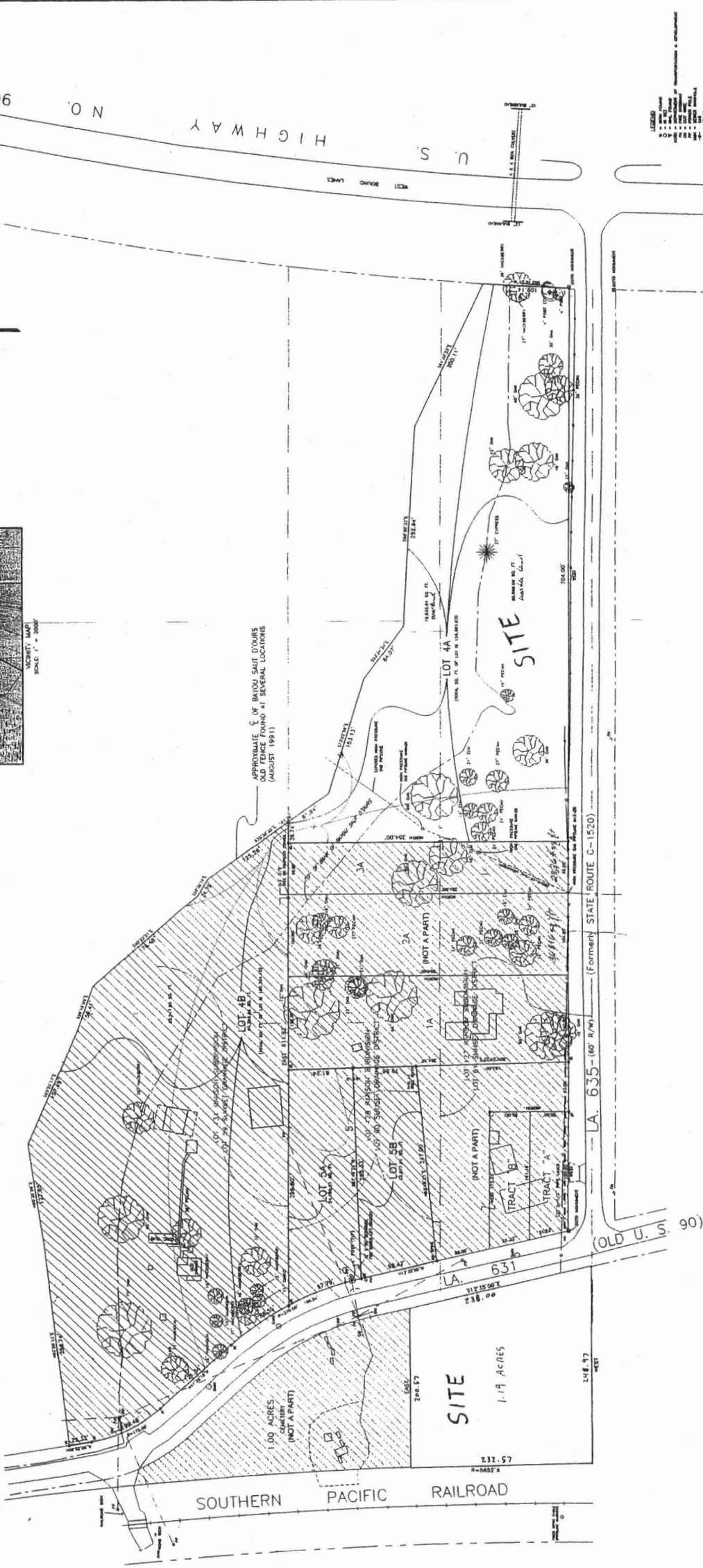


LOCATION MAP  
SCALE 1" = 2000'

Recorded in the Clerk of Court's office  
 By: \_\_\_\_\_, Clerk of Court  
 Filed: \_\_\_\_\_, in Book \_\_\_\_\_ of Page \_\_\_\_\_  
 Date: \_\_\_\_\_  
 Signature: \_\_\_\_\_

Approved/Disapproved  
 Planning Commission Chairman \_\_\_\_\_  
 Date: \_\_\_\_\_  
 Mayor/President \_\_\_\_\_  
 Date: \_\_\_\_\_



RESUBDIVISION OF LOTS 4 & 5  
 OF A RESUBDIVISION OF A PORTION OF LOTS 127, 129 & 131 OF  
 COTEAU DE FRANCE OR RANSON SUBDIVISION  
 IN SECTION 19, T-15 S  
 IN SECTION 19, T-15 S  
 ST. CHARLES PARISH, LOUISIANA  
 JANUARY 21, 2008

NOTES:  
 1. IN THE EVENT THAT FUTURE REVISIONS ARE INCORPORATED,  
 2. TO BE FOR LOTS AND NEAR INDUSTRIAL DEVELOPMENT  
 AND LAND USE DISTRICTS IN THE AREA.

1. I certify that this plan represents an actual  
 survey of the land shown on the plan and that  
 the same is in accordance with the provisions  
 of the laws of Louisiana relating to the recording  
 of land conveyances and that the same is  
 correct and true to the best of my knowledge  
 and belief.  
 LUCIEN C. GUSSEN, PLS  
 1038 Coates Street  
 Lake Charles, Louisiana 70007

APPROXIMATE C OF BAYOU SAUT D'OURS  
 LOCATIONS AT SEVERAL LOCATIONS  
 (AUGUST 1981)

SCALE 1" = 60'