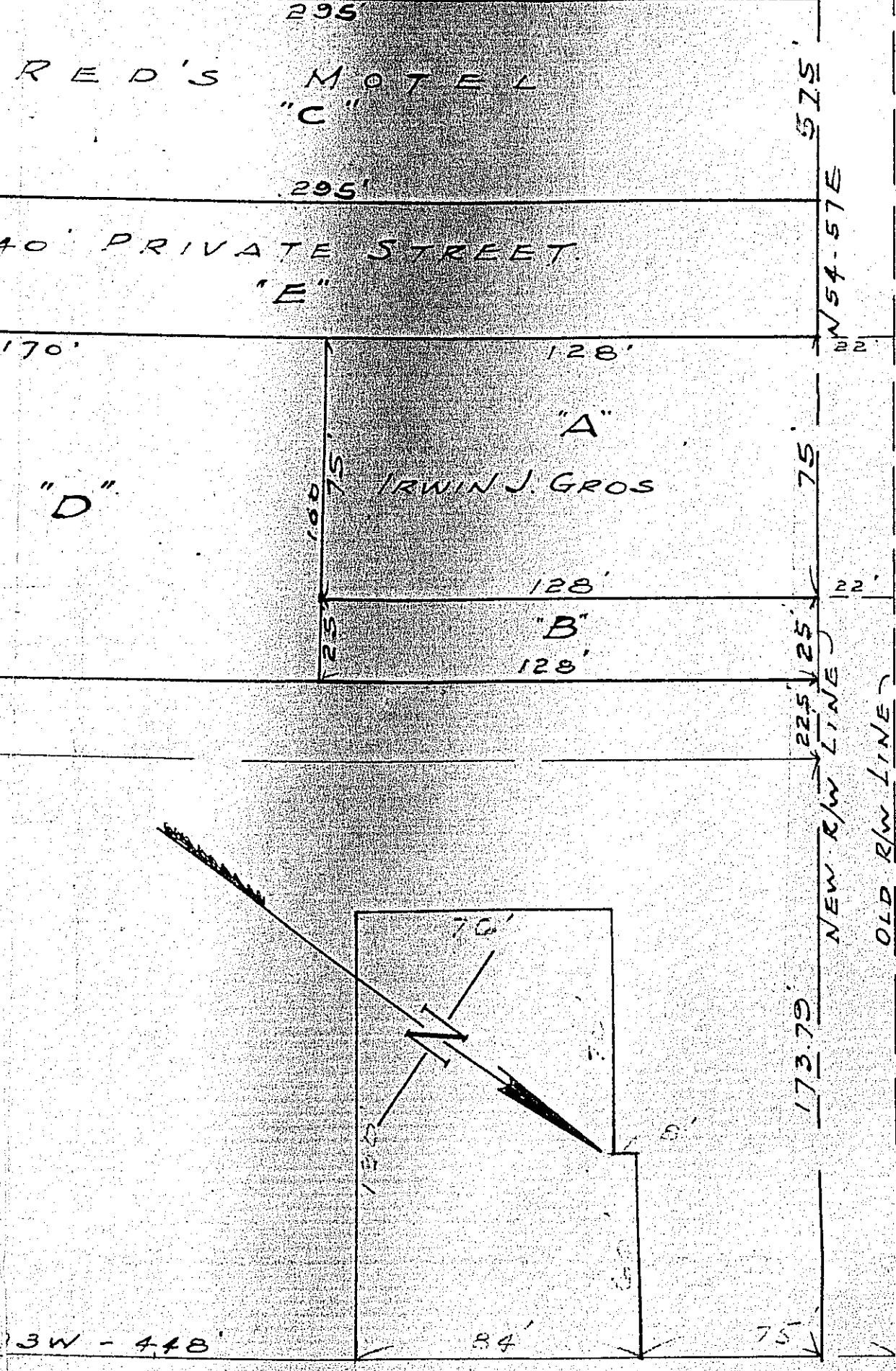
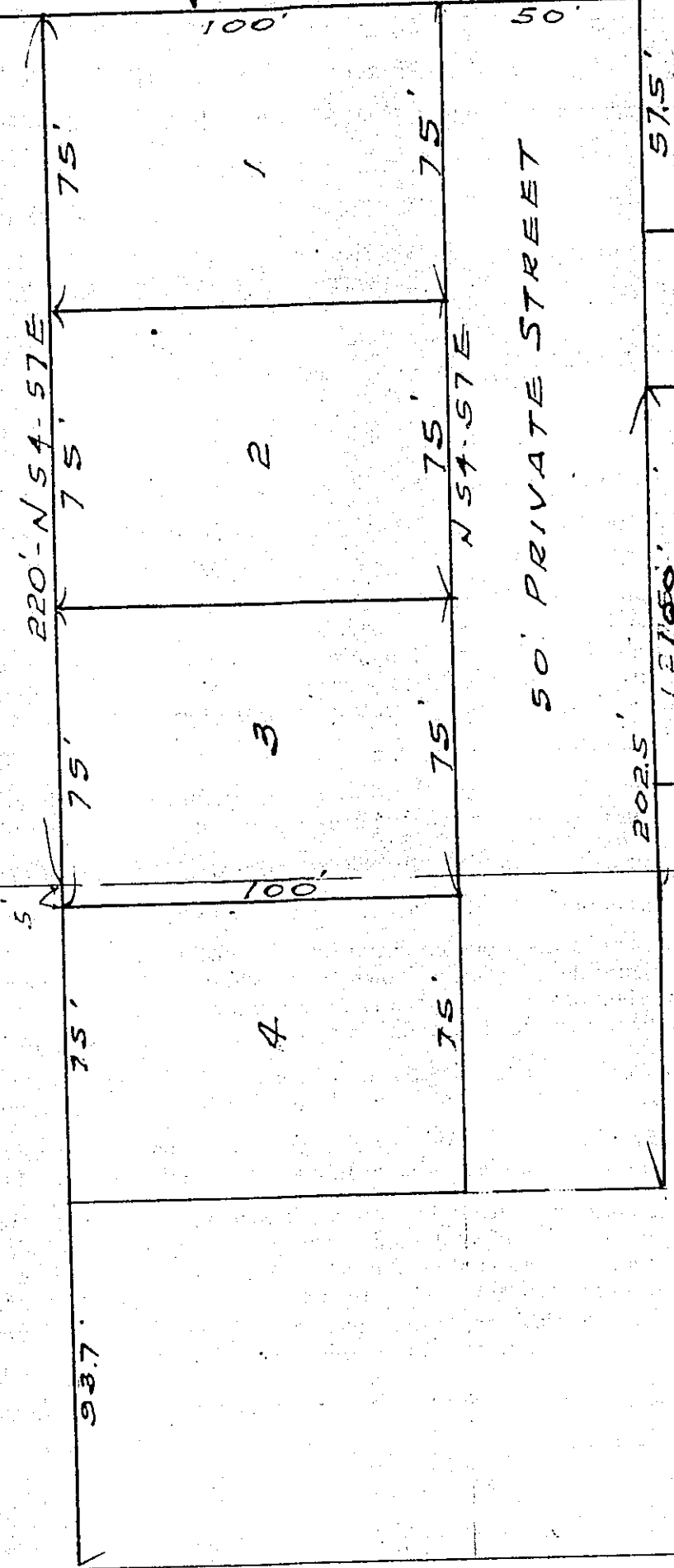


FARM LOT NO. 10

NO. 100-10-01
To be held by without of sale
first purchase of holding
the 1st day of October, 1965.
Edmund Gros
Notary Public

N 35-03 W

FARM LOT NO. 8 & 9
H I N G L E
FARM LOT NO. 9



N 31-3 W - 448'

W I S N R S T

SURVEY OF PORTIONS OF FARM LOTS 8 & 9 OF THE TOWNSITE OF PARADIS, ST. CHARLES RISH, LA.

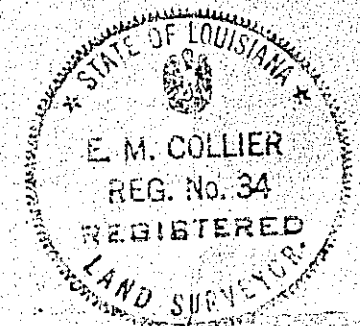
& IN SECTION 39-T14R20E.
MADE AT THE REQUEST OF EDMUND GROS.

SCALE: - 1" = 40'

BY: *E. M. Collier*

DEC. 10, 1962.

REVISED MARCH 23, 1963.



122' R/W L.A. U.S. HY. NO. 90 (ORTMAN ST.)