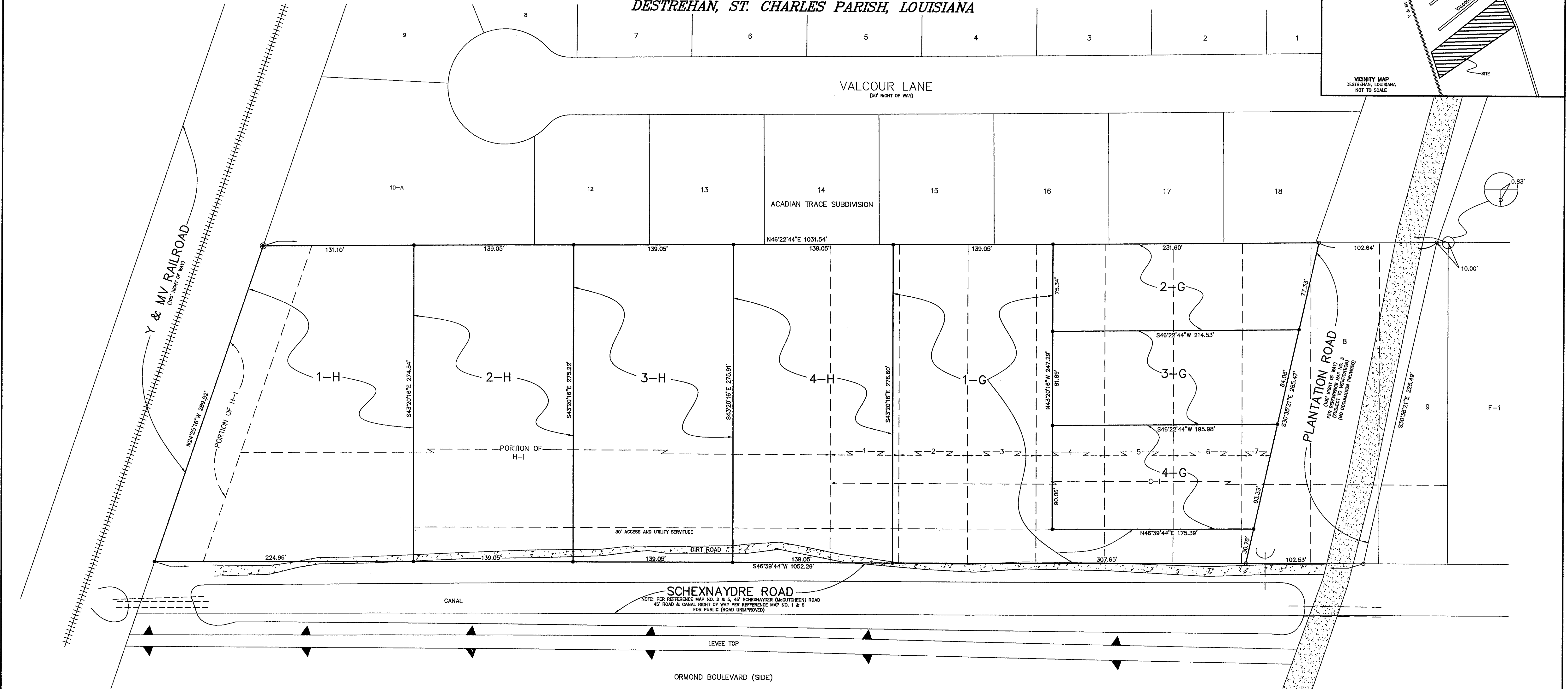
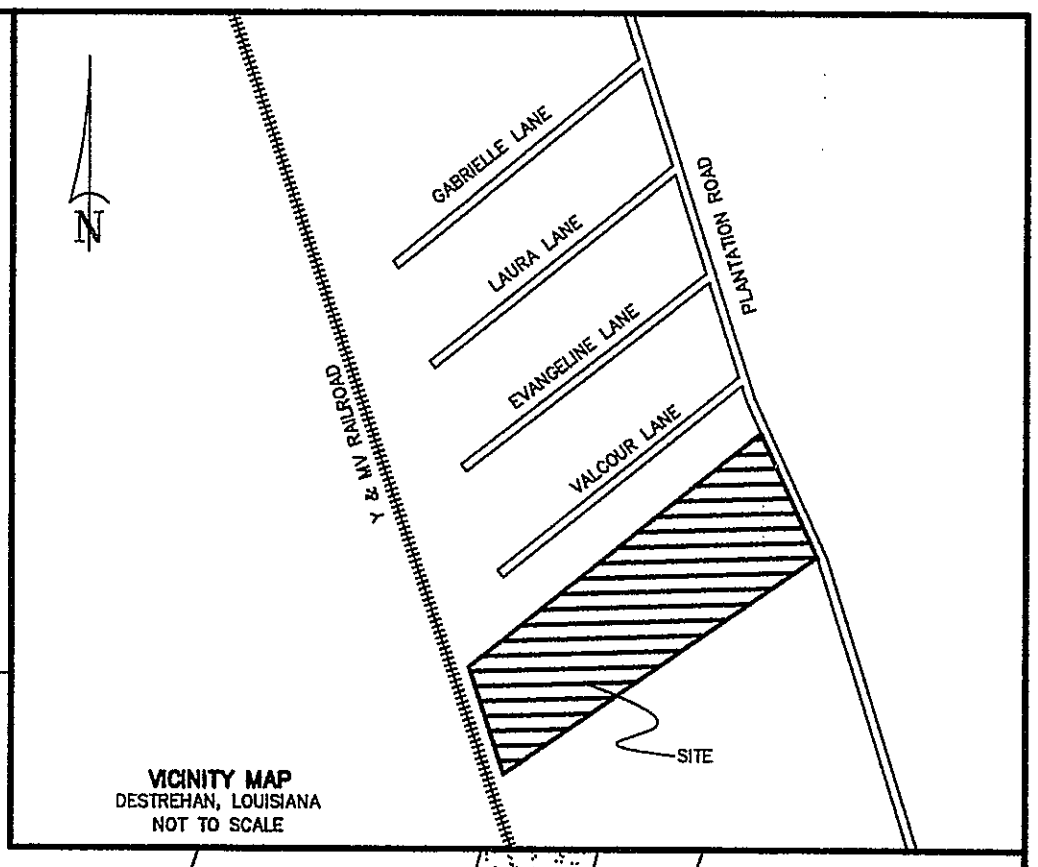


**SURVEY PLAT AND RESUBDIVISION OF
TWO PORTIONS OF PARCEL H-I, LOTS 1, 2, 3, 4, 5, 6, A PORTION OF LOT 7, A PORTION OF LOT 8
OF PARCEL G-I OF A SUBDIVISION OF A PORTION OF TRACT NO. 1 OF ORMOND PLANTATION SUBDIVISION
INTO LOTS HEREIN DESIGNATED AS LOTS 1-H, 2-H, 3-H, 4-H, 1-G, 2-G, 3-G & 4-G
OF A SUBDIVISION OF A PORTION OF TRACT NO. 1 OF ORMOND PLANTATION SUBDIVISION
SITUATED IN SECTION 11, T-12-S, R-8-E,
DESTREHAN, ST. CHARLES PARISH, LOUISIANA**



DEVELOPER: JACK CALI
38475 RUE LAMONTE COURT
PRAIRIEVILLE, LOUISIANA 70769
504-608-4243

APPROVED:

PARISH PRESIDENT _____ DATE _____

DIRECTOR, DEPT. OF PLANNING AND ZONING _____ DATE _____

CERTIFICATION: THIS IS TO CERTIFY THAT THIS PLAT IS MADE IN ACCORDANCE WITH LA. REVISED STATUTES 33:5051 ET. SEQ. AND CONFORMS TO ALL PARISH ORDINANCES GOVERNING THE SUBDIVISION OF LAND.

RECORDED IN THE CLERK OF COURT'S OFFICE
ST. CHARLES PARISH ON THE _____
DAY OF _____ IN BOOK _____
FOLIO _____ ENTRY # _____

ALL NECESSARY SEWER, WATER AND/OR OTHER UTILITY EXTENSIONS, RELOCATION'S OR MODIFICATIONS SHALL BE MADE BY AND SOLELY AT THE LOT OWNER'S EXPENSE

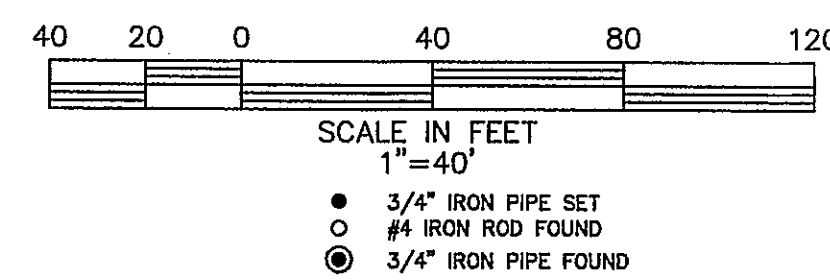
LOT	AREA
1-H	48,803 SQ. FT.
2-H	38,222 SQ. FT.
3-H	38,318 SQ. FT.
4-H	38,413 SQ. FT.
1-G	43,669 SQ. FT.
2-G	16,807 SQ. FT.
3-G	16,807 SQ. FT.
4-G	16,807 SQ. FT.

SURVEY REFERENCE: 1. SKETCH SHOWING THE SUBDIVISION OF REAR PORTION OF TRACT NO. 1 OF ORMOND PLANTATION SUBDIVISION BY H.E. LANSRY, P.L.S. DATED AUGUST 26, 1922.
2. PLAN SHOWING LOT G-1 & SUBDIVISION OF LOTS A & C OF A PORTION OF LOT 1 OF ORMOND PLANTATION SUBDIVISION BY E.M. COLLIER, P.L.S. DATED NOVEMBER 27, 1984.
3. SURVEY OF RESUBDIVISED LOT 2A, ORMOND PLANTATION BY J. MICHAEL DIXON, P.E. DATED 9/26/1990.
4. MAP SHOWING THE CREATION OF TRACT 10-A FORMERLY LOTS 10 & 11 OF THE RESUBDIVISED LOT 2A, ORMOND PLANTATION BY LOUIS LYLES BUDEN, P.L.S. DATED NOVEMBER 10, 1999.
5. SURVEY OF A PORTION OF LOT H OF A PARTITION OF LOT ONE ORMOND PLANTATION BY E.M. COLLIER DATED JULY 17, 1970.
6. SURVEY OF A PORTION OF LOT H-1 OF A SUBDIVISION OF A PORTION OF TRACT NO. 1 ORMOND PLANTATION SUBDIVISION BY LUCIEN C. GASSEN, P.L.S. DATED FEBRUARY 24, 1984.

BASIS OF BEARING: BEARINGS HEREON ARE REFERENCED TO GRID NORTH AS ESTABLISHED BY THE LOUISIANA STATE PLANE COORDINATE SYSTEM, LOUISIANA SOUTH ZONE USING UTM SMARTNET SOLUTION 3/4/2015 NAVD83/NAD 83 GEOID12A.

FLOOD NOTE: THE SURVEYED PARCEL IS IN ZONE "A99" PER FEDERAL INSURANCE RATE MAP NUMBER 220160-0125C DATED 6/18/1992, REVISED 5/2/2003 LOHR

SURVEYOR'S NOTES: A. THIS PLAT IS CORRECT AND IN ACCORDANCE WITH A PHYSICAL SURVEY MADE ON THE GROUND UNDER THE DIRECTION OF THE UNDERSIGNED AND COMPLIES WITH THE REQUIREMENTS OF LOUISIANA'S "STANDARDS OF PRACTICE FOR BOUNDARY SURVEYS" FOR A CLASS B SURVEY.
B. NO TITLE OPINION WAS PROVIDED TO THIS FIRM. THEREFORE NO CERTIFICATION IS GIVEN TO THE EXISTENCE OF OTHER SERVITUDES OR EASEMENTS WHICH MAY EXIST OTHER THAN THOSE SHOWN.
C. MINIMUM SETBACK LINES AND SERVITUDES SHOWN ARE BASED ON THE REFERENCED SURVEY PLAT. THE APPROPRIATE PARISH AUTHORITY OR NEIGHBORHOOD REGULATORY BOARD SHOULD BE CONSULTED FOR FINAL DETERMINATION.



THE LOCATIONS OF UNDERGROUND AND OTHER NONVISIBLE UTILITIES SHOWN HEREON HAVE BEEN DETERMINED FROM DATA EITHER FURNISHED BY THE AGENCIES CONTROLLING SUCH DATA AND/OR EXTRACTED FROM RECORDS MADE AVAILABLE TO US BY THE AGENCIES CONTROLLING SUCH RECORDS. WHERE FOUND, THE SURFACE FEATURES OF LOCATIONS ARE SHOWN. THE ACTUAL NONVISIBLE LOCATIONS MAY VARY FROM THOSE SHOWN HEREON. EACH AGENCY SHOULD BE CONTACTED RELATIVE TO THE PRECISE LOCATION OF ITS UNDERGROUND INSTALLATION PRIOR TO ANY RELIANCE UPON THE ACCURACY OF SUCH LOCATIONS SHOWN HEREON, INCLUDING PRIOR TO EXCAVATION AND DIGGING.

DOTTE 1-800-272-3020

OCT - 7 2015

RIVERLANDS SURVEYING COMPANY
505 HEMLOCK STREET
LAPLACE, LA. 70068
1-800-249-6982
985-652-6356

Stephen P. Flynn
STEPHEN P. FLYNN
P.L.S. LA. ST. REG. NO. 4668