

*Ord.*

**2015-0434**

**INTRODUCED BY: V.J. ST. PIERRE, JR., PARISH PRESIDENT  
(DEPARTMENT OF PLANNING AND ZONING)**

**ORDINANCE NO. 15-12-8**

An ordinance to approve the resubdivision of two portions of Parcel H-1, Lots 1, 2, 3, 4, 5, 6, a portion of Lot 7, a portion of Lot 8 of Parcel G-1 of a subdivision of a portion of Tract No. 1 of Ormond Plantation Subdivision into lots herein designated as Lots 1-H, 2-H, 3-H, 4-H, 1-G, 2-G, 3-G & 4-G of a subdivision of apportion of Tract No. 1 of the Ormond Plantation Subdivision, Destrehan. Zoning District R-3. Council District 3, as requested by Jack Cali III.

**WHEREAS,** at their August 6, 2015 meeting, the Planning Commission recommended Approval of PZS-2015-38, a resubdivision of two portions of Parcel H-1, Lots 1, 2, 3, 4, 5, 6, a portion of Lot 7, a portion of Lot 8 of Parcel G-1 of a subdivision of a portion of Tract No. 1 of Ormond Plantation Subdivision into lots herein designated as Lots 1-H, 2-H, 3-H, 4-H, 1-G, 2-G, 3-G & 4-G of a subdivision of apportion of Tract No. 1 of the Ormond Plantation Subdivision, Destrehan. Zoning District R-3. Council District 3, as requested by Jack Cali III; and,

**WHEREAS,** the St. Charles Parish Subdivision Ordinance of 1981 (as amended) stipulates that consideration of a resubdivision whereby a net increase of more than five (5) lots is proposed, and /or the required public improvements are deemed by the Planning Director to be insignificant, and where no new public streets are to be dedicated major resubdivision by the Planning and Zoning Commission also requires approval by the St. Charles Parish Council.

**THE ST. CHARLES PARISH COUNCIL HEREBY ORDAINS:**

**SECTION I.** That PZS-2015-38, a resubdivision of two portions of Parcel H-1, Lots 1, 2, 3, 4, 5, 6, a portion of Lot 7, a portion of Lot 8 of Parcel G-1 of a subdivision of a portion of Tract No. 1 of Ormond Plantation Subdivision into lots herein designated as Lots 1-H, 2-H, 3-H, 4-H, 1-G, 2-G, 3-G & 4-G of a subdivision of apportion of Tract No. 1 of the Ormond Plantation Subdivision, Destrehan. Zoning District R-3. Council District 3, as requested by Jack Cali III is hereby approved.

**SECTION II.** The Parish President is hereby authorized to execute the attached surveys by Riverlands Surveying Company, dated October 2, 2015.

The foregoing ordinance having been submitted to a vote, the vote thereon was as follows:

**YEAS:** LEWIS, WILSON, TASTET, BENEDETTO, HOGAN, COCHRAN, FLETCHER, FISHER-PERRIER  
**NAYS:** NONE  
**ABSENT:** SCHEXNAYDRE

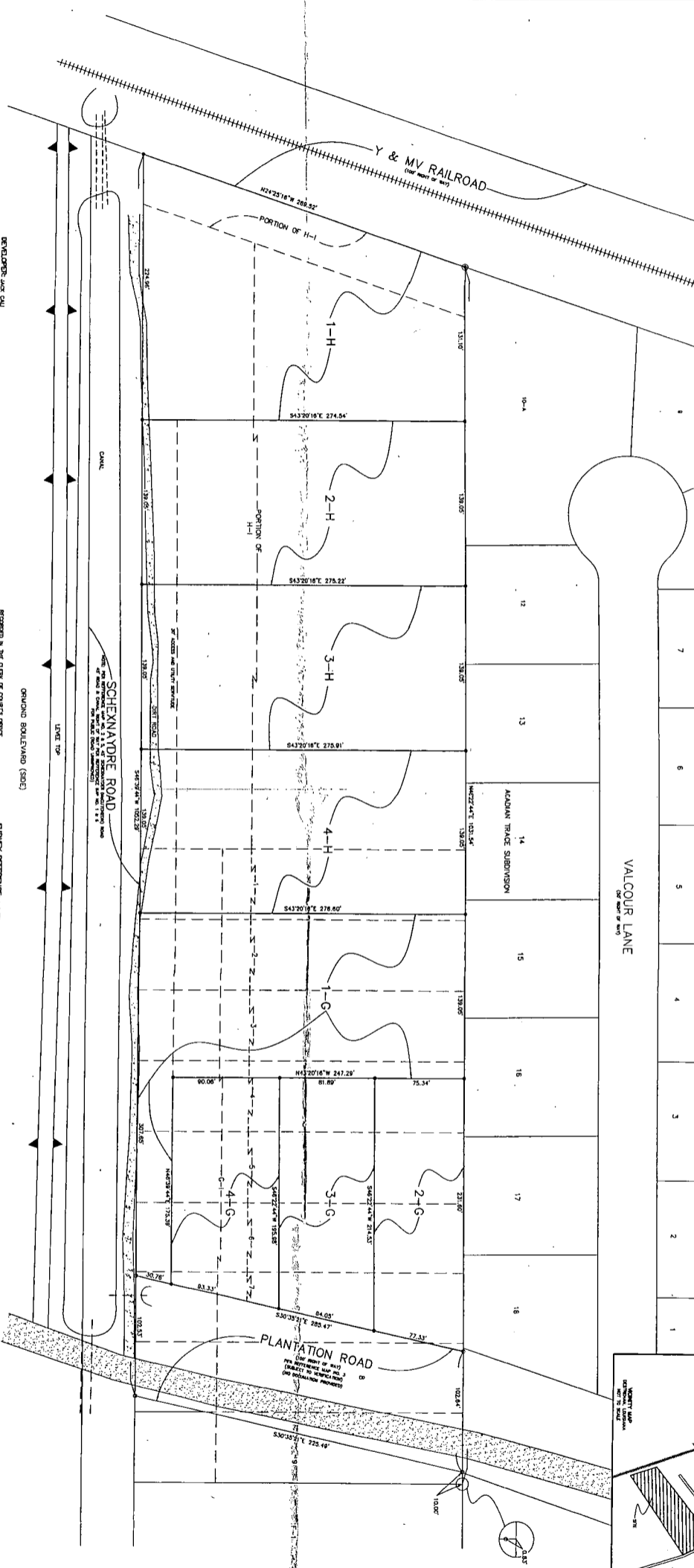
And the ordinance was declared adopted this 14th day of December 2015, to become effective five (5) days after publication in the Official Journal.

CHAIRMAN: \_\_\_\_\_  
SECRETARY: \_\_\_\_\_  
DLVD/PARISH PRESIDENT: 12/16/15  
APPROVED: \_\_\_\_\_ DISAPPROVED: \_\_\_\_\_  
PARISH PRESIDENT: [Signature]  
RETD/SECRETARY: 12/17/15  
AT: 9:50a RECD BY: [Signature]

RECORDED IN THE ST. CHARLES PARISH  
CLERK OF COURT OFFICE  
ON December 18, 2015  
AS ENTRY NO. 411430  
IN MORTGAGE/CONVEYANCE BOOK  
NO. 826 FOLIO 234

Ormond Plant, Cat. Subd., Metairie

**SURVEY PLAT AND RESUBDIVISION OF**  
**TWO PORTIONS OF PARCEL H-1, LOTS 1, 2, 3, 4, 5, 6, A PORTION OF LOT 7, A PORTION OF LOT 8**  
**OF PARCEL G-1 OF A SUBDIVISION OF TRACT NO. 1 OF ORMOND PLANTATION SUBDIVISION**  
**INTO LOTS HEREBY DESIGNATED AS LOTS 1-H, 2-H, 3-H, 4-H, 1-G, 2-G, 3-G & 4-G**  
**OF A SUBDIVISION OF A PORTION OF TRACT NO. 1 OF ORMOND PLANTATION SUBDIVISION**  
**SITUATED IN SECTION 11, T-12-S, R-8-E**  
**DESTREHAN, ST. CHARLES PARISH, LOUISIANA**



**DEVELOPER:** JACQ CUI  
 PLANNING CORP.  
 505 AIRBORNE STREET  
 METairie, LOUISIANA 70002  
 504-885-4243

**APPROVED:**  
 [Signature]  
 DATE: 12/21/15

**DATE:** 11/15/16

CONTRACTOR: THIS IS TO CERTIFY THAT THIS PLAT IS MADE IN ACCORDANCE WITH THE REQUIREMENTS OF THE REVISIONS TO THE CONSTITUTION OF THE STATE OF LOUISIANA AND THE ACTS OF THE LEGISLATURE THEREON.

ENGINE: 1-800-271-2000

RECORDED IN THE CLERK OF COURTY OFFICE OF ORMOND PARISH, LOUISIANA, ON 11/15/16.

ASBL	AREA
1-H	36,822 SQ. FT.
2-H	36,822 SQ. FT.
3-H	36,822 SQ. FT.
4-H	36,822 SQ. FT.
1-G	43,889 SQ. FT.
2-G	18,807 SQ. FT.
3-G	18,807 SQ. FT.
4-G	18,807 SQ. FT.

ALL NECESSARY RECORDS, WITH ANY AND ALL OTHER INSTRUMENTS, RECORDS, AND DOCUMENTS, SHALL BE MADE BY THE SURVEYOR.

**SURVEY REFERENCE:** 1. SECTION 11, T-12-S, R-8-E, PARISH OF ORMOND, LOUISIANA. 2. TRACT NO. 1 OF ORMOND PLANTATION SUBDIVISION, PARISH OF ORMOND, LOUISIANA. 3. PARCEL G-1 OF A SUBDIVISION OF TRACT NO. 1 OF ORMOND PLANTATION SUBDIVISION, PARISH OF ORMOND, LOUISIANA. 4. PARCEL H-1 OF A SUBDIVISION OF TRACT NO. 1 OF ORMOND PLANTATION SUBDIVISION, PARISH OF ORMOND, LOUISIANA. 5. LOTS 1, 2, 3, 4, 5, 6, 7, 8 OF PARCEL H-1 OF A SUBDIVISION OF TRACT NO. 1 OF ORMOND PLANTATION SUBDIVISION, PARISH OF ORMOND, LOUISIANA.

**BASES OF BEARINGS:** THE BEARINGS AND DISTANCES OF THE BOUNDARIES OF THIS PLAT ARE BASED UPON THE BEARINGS AND DISTANCES OF THE BOUNDARIES OF THE TRACTS AND PARCELS REFERENCED ABOVE.

**FLOOD NOTE:** THE SURVEYED AREA IS IN A FLOOD PLAIN. THE FLOOD HAZARD ZONE MAP (FHM) FOR THIS AREA IS AVAILABLE FROM THE LOUISIANA DEPARTMENT OF TRANSPORTATION AND INFRASTRUCTURE.

NO.	DATE	DESCRIPTION	BY
1	11/15/16	PREPARED	[Signature]
2			
3			
4			
5			
6			
7			
8			
9			
10			

**RIVERLANDS SURVEYING COMPANY**  
 505 AIRBORNE STREET  
 METairie, LOUISIANA 70002  
 504-885-4243  
 504-885-4244  
 504-885-4245

