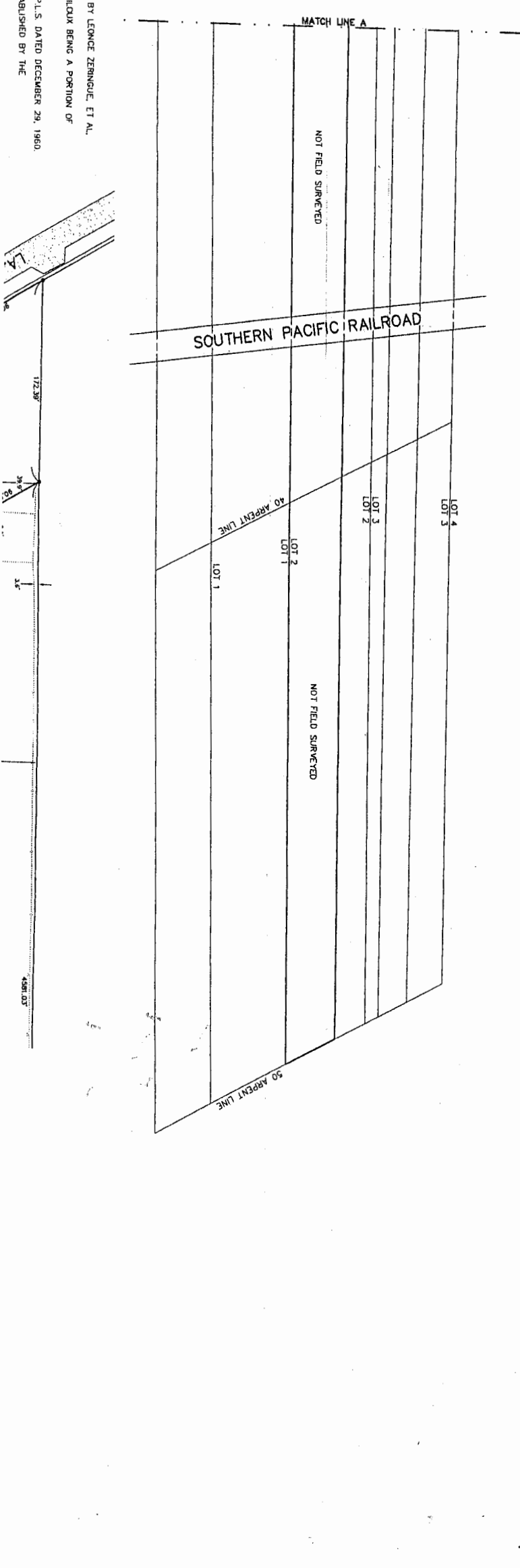
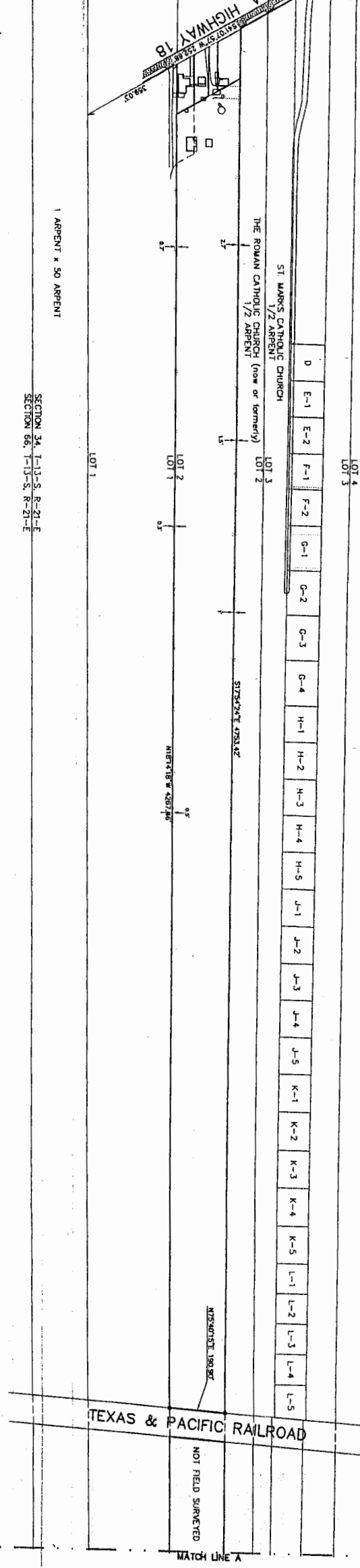


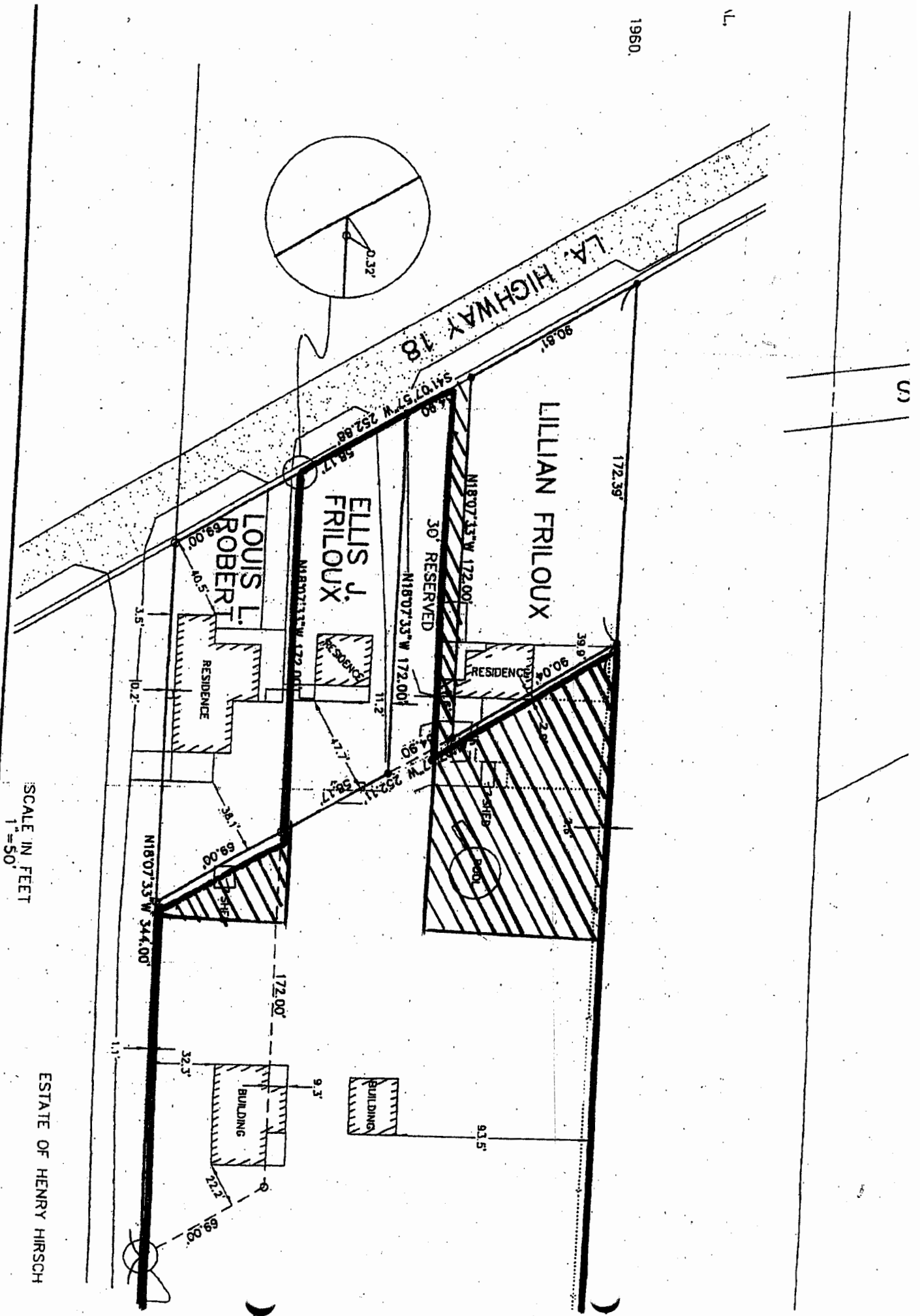
**SURVEY OF A PORTION OF LOT NO. 2 OF A PARTITION OF A TRACT OF LAND
BY LEONCE ZERINGUE, ET AL, ON NOVEMBER 29, 1879
SITUATED IN SECTION 34, T-13-S, R-21-E,
AMA, ST. CHARLES PARISH, LOUISIANA**



BY LEONCE ZERINGUE, ET AL,
RILLOUX BEING A PORTION OF
P.L.S. DATED DECEMBER 29, 1960
TABUSHED BY THE

L.

1960.



SCALE IN FEET
1"=50'

ESTATE OF HENRY HIRSCH