

St. Charles Parish

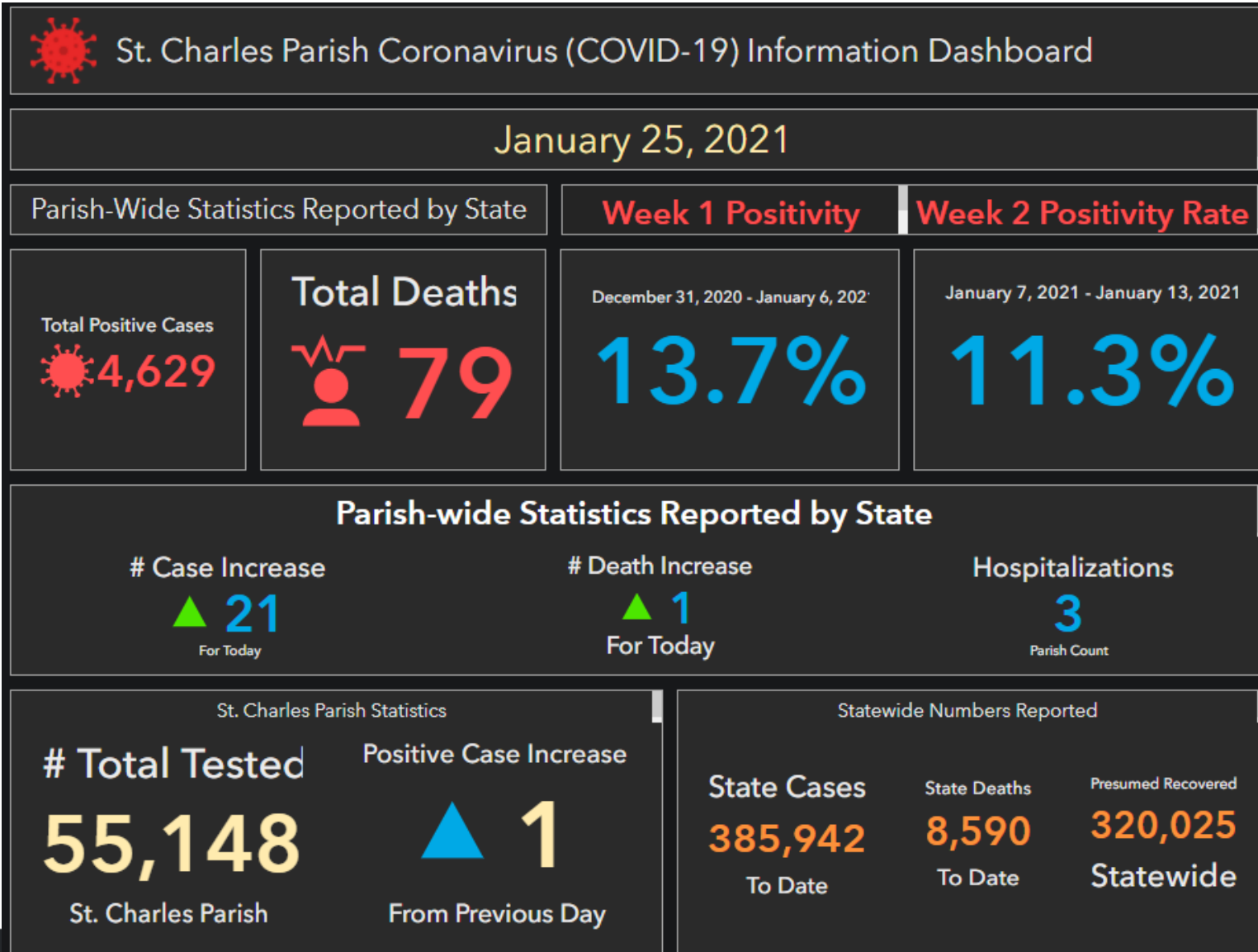
Parish Presidents Report

Monday, January 25, 2020

President Matthew Jewell



COVID-19 Update



Parish President's Report

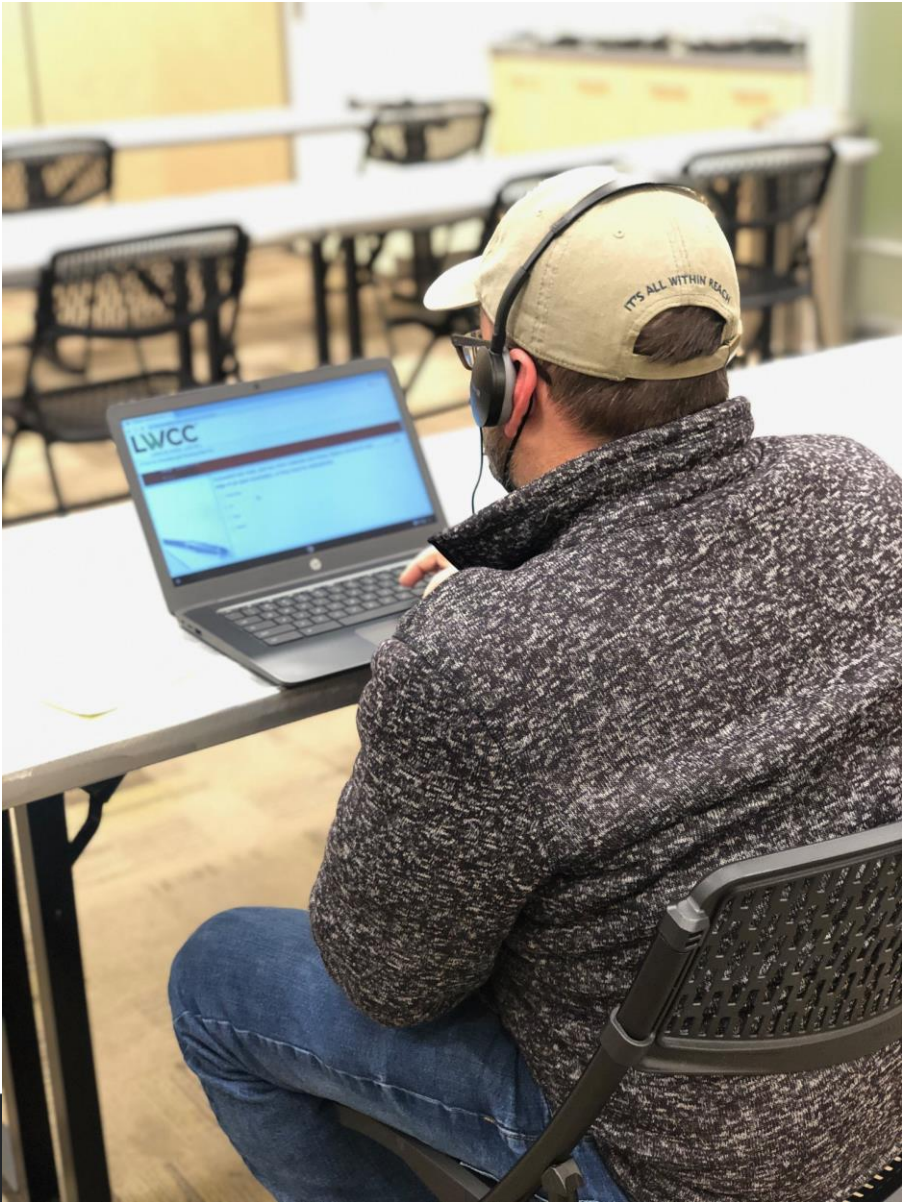
Hydrant
Testing in
Luling

Blood Drive

River Parish
Community
College

Special
Olympics
Coach

Employee Training



Dirt at Community Center



UV Destrehan Project



Luling Pond Project



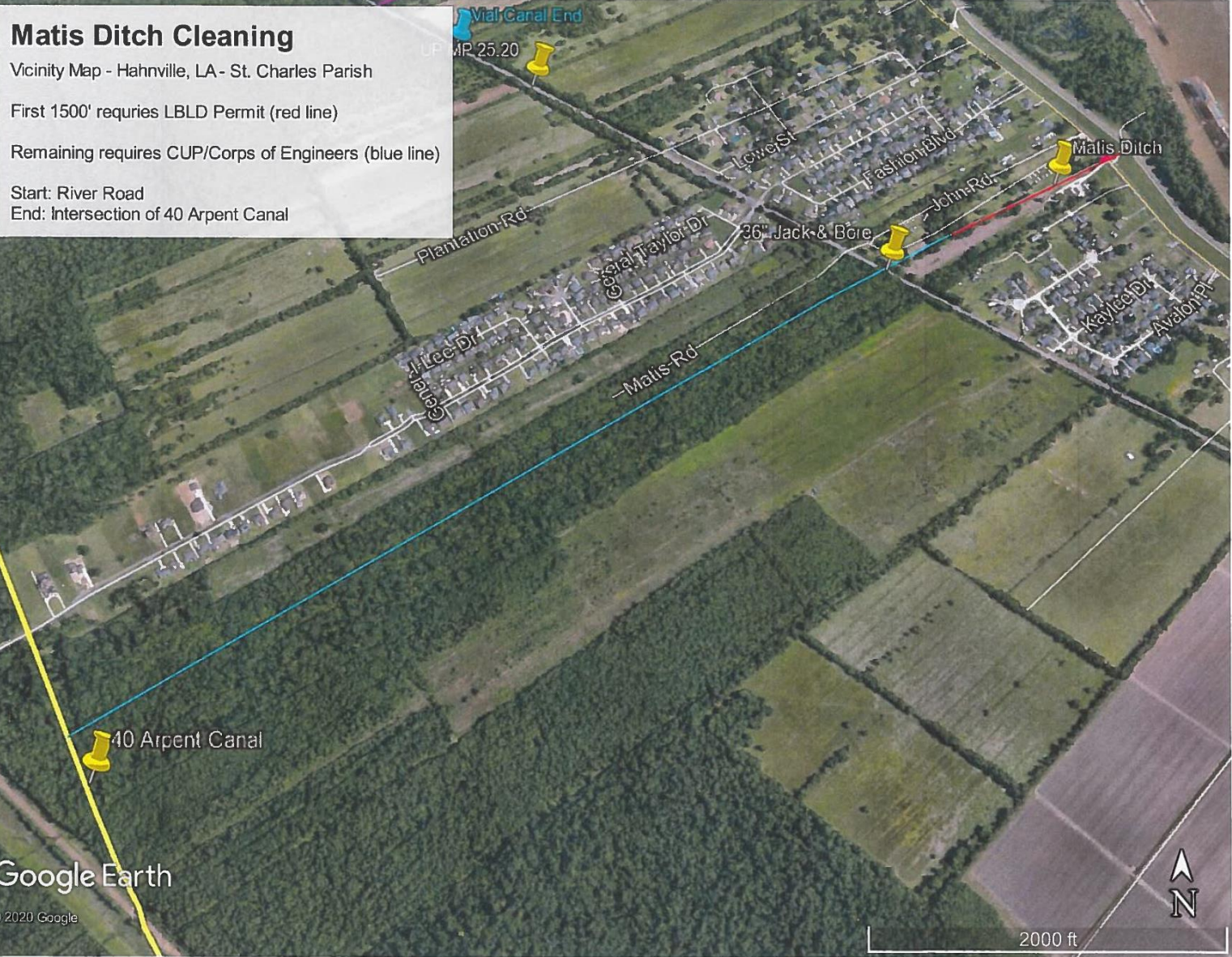
Ormond Nursing Home Culverts



Matis Ditch, Hahnville



Matis Ditch, Hahnville



Shaw Street, Hahnville



School House Road, Killona



Plantation Road



Manor Oak, St. Rose



Ditch on Airline



Sewerage Master Plan Update

Phase 1
complete

Phase 2

Sewerage Master Plan Update

East Bank

- Montz 90%
- Norco 40%
- New Sarpy 45%
- Ormond 45%

West Bank

- Completed existing conditions for Hahnville
- Ama-Sellers area completed last week
- Other areas to follow