

**ACT OF DEPOSIT**

**UNITED STATES OF AMERICA**

**BY ST. CHARLES PARISH**

**STATE OF LOUISIANA**

**PARISH OF ST. CHARLES**

BE IT KNOWN, that on this 25<sup>th</sup> day of June 2024, before me, the undersigned Notary Public, duly commissioned and qualified in and for the State of Louisiana, Parish of St. Charles, and in the presence of the undersigned competent witnesses, personally came and appeared:

**ST. CHARLES PARISH, appearing herein through  
EARL MATHERNE, PLANNING ADMINISTRATOR**

Appearer declared that Ordinance No. 24-6-2 adopted on June 3, 2024 by the St. Charles Parish Council, approved and authorized an "Act of Amendment and Ratification of Act of Dedication and Subdivision Division" by Heather Oaks, LLC dated May 6, 2024 and the plat by Louis J. Gassen, Jr., PLS dated January 20, 2023, revised January 23, 2024 and April 24, 2024 entitled "Amended Final Plat The Reserve at Heather Oaks" recorded on June 10, 2024 under Instrument No. 482128.

Appearer further declared that a copy of the original "Amended Final Plat The Reserve at Heather Oaks" was mistakenly filed with the Act of Amendment.

Appearer has marked for identification as Exhibit A to this Act of Deposit the original "Amended Final Plat The Reserve at Heather Oaks". Appearer deposits this "Amended Final Plat The Reserve at Heather Oaks" with the conveyance records of St. Charles Parish, Louisiana, and to request the Clerk of Court for the Parish of St. Charles, State of Louisiana, to make note of this Act of Deposit at the inscription of the Act of Amendment and Amended Final Plat at Instrument No. 482128.

**THUS DONE AND PASSED** in Hahnville, Louisiana, on the date set forth above, in the presence of the undersigned competent witnesses, who executed this Act of Deposit with Appearer and me, Notary, after due reading of the whole.

WITNESSES:

*[Signature]*

*[Signature]*

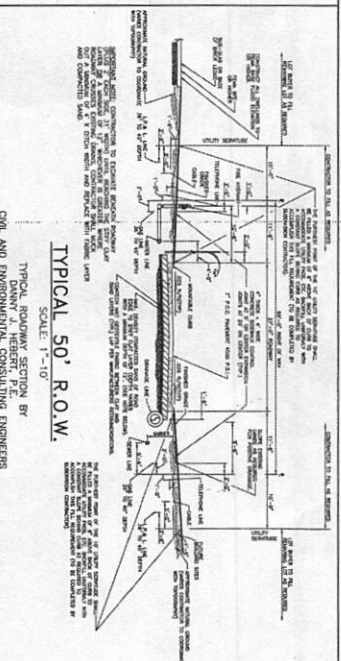
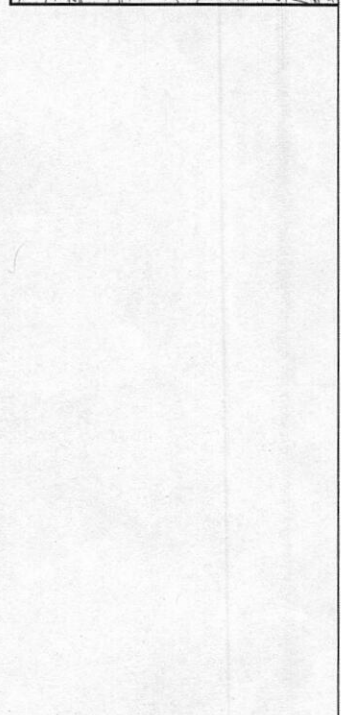
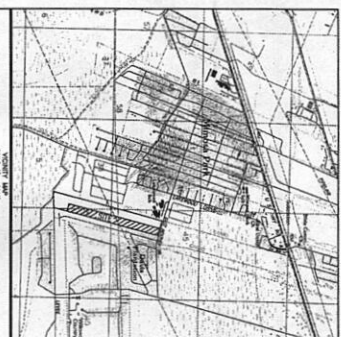
**ST. CHARLES PARISH**

BY: *[Signature]*  
**EARL MATHERNE  
PLANNING ADMINISTRATOR**

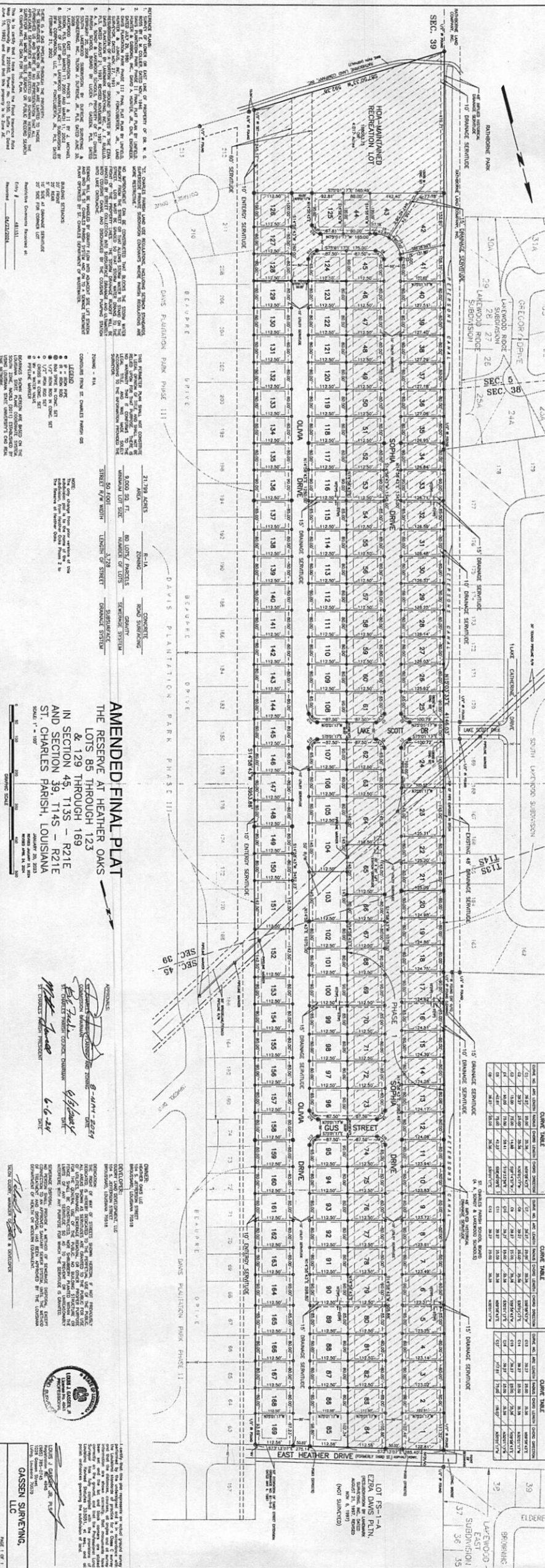
*[Signature]*  
**NOTARY PUBLIC  
COREY M. OUBRE  
NOTARY PUBLIC  
LSBA NO. 28709  
LA NOTARY NO. 77473  
St. Charles Parish, Louisiana  
My Commission is issued for Life**

COB: 482454; Page: 1; Filed: 6/26/2024 3:32:14 PM [stcharles: SD]





AREA TABLE	AREA TABLE	AREA TABLE	AREA TABLE	AREA TABLE	AREA TABLE
LOT NO.	AREA	LOT NO.	AREA	LOT NO.	AREA
1	1,234.56	11	1,234.56	21	1,234.56
2	1,234.56	12	1,234.56	22	1,234.56
3	1,234.56	13	1,234.56	23	1,234.56
4	1,234.56	14	1,234.56	24	1,234.56
5	1,234.56	15	1,234.56	25	1,234.56
6	1,234.56	16	1,234.56	26	1,234.56
7	1,234.56	17	1,234.56	27	1,234.56
8	1,234.56	18	1,234.56	28	1,234.56
9	1,234.56	19	1,234.56	29	1,234.56
10	1,234.56	20	1,234.56	30	1,234.56



1. THE PROPERTY IS TO BE DEVELOPED AS A RESIDENTIAL SUBDIVISION.
2. THE LOTS ARE TO BE DEVELOPED AS SINGLE-FAMILY RESIDENCES.
3. THE LOTS ARE TO BE DEVELOPED AS ROW HOUSES.
4. THE LOTS ARE TO BE DEVELOPED AS TOWNHOUSES.
5. THE LOTS ARE TO BE DEVELOPED AS APARTMENTS.
6. THE LOTS ARE TO BE DEVELOPED AS CONDOS.
7. THE LOTS ARE TO BE DEVELOPED AS MIXED-USE DEVELOPMENT.
8. THE LOTS ARE TO BE DEVELOPED AS COMMERCIAL DEVELOPMENT.
9. THE LOTS ARE TO BE DEVELOPED AS INDUSTRIAL DEVELOPMENT.
10. THE LOTS ARE TO BE DEVELOPED AS AGRICULTURAL DEVELOPMENT.

THE PROPERTY IS TO BE DEVELOPED AS A RESIDENTIAL SUBDIVISION. THE LOTS ARE TO BE DEVELOPED AS SINGLE-FAMILY RESIDENCES, ROW HOUSES, TOWNHOUSES, APARTMENTS, CONDOS, MIXED-USE DEVELOPMENT, COMMERCIAL DEVELOPMENT, INDUSTRIAL DEVELOPMENT, AGRICULTURAL DEVELOPMENT, AND OTHER TYPES OF DEVELOPMENT AS SHOWN ON THE PLANS.

THE PROPERTY IS TO BE DEVELOPED AS A RESIDENTIAL SUBDIVISION. THE LOTS ARE TO BE DEVELOPED AS SINGLE-FAMILY RESIDENCES, ROW HOUSES, TOWNHOUSES, APARTMENTS, CONDOS, MIXED-USE DEVELOPMENT, COMMERCIAL DEVELOPMENT, INDUSTRIAL DEVELOPMENT, AGRICULTURAL DEVELOPMENT, AND OTHER TYPES OF DEVELOPMENT AS SHOWN ON THE PLANS.

THE PROPERTY IS TO BE DEVELOPED AS A RESIDENTIAL SUBDIVISION. THE LOTS ARE TO BE DEVELOPED AS SINGLE-FAMILY RESIDENCES, ROW HOUSES, TOWNHOUSES, APARTMENTS, CONDOS, MIXED-USE DEVELOPMENT, COMMERCIAL DEVELOPMENT, INDUSTRIAL DEVELOPMENT, AGRICULTURAL DEVELOPMENT, AND OTHER TYPES OF DEVELOPMENT AS SHOWN ON THE PLANS.

THE PROPERTY IS TO BE DEVELOPED AS A RESIDENTIAL SUBDIVISION. THE LOTS ARE TO BE DEVELOPED AS SINGLE-FAMILY RESIDENCES, ROW HOUSES, TOWNHOUSES, APARTMENTS, CONDOS, MIXED-USE DEVELOPMENT, COMMERCIAL DEVELOPMENT, INDUSTRIAL DEVELOPMENT, AGRICULTURAL DEVELOPMENT, AND OTHER TYPES OF DEVELOPMENT AS SHOWN ON THE PLANS.

THE PROPERTY IS TO BE DEVELOPED AS A RESIDENTIAL SUBDIVISION. THE LOTS ARE TO BE DEVELOPED AS SINGLE-FAMILY RESIDENCES, ROW HOUSES, TOWNHOUSES, APARTMENTS, CONDOS, MIXED-USE DEVELOPMENT, COMMERCIAL DEVELOPMENT, INDUSTRIAL DEVELOPMENT, AGRICULTURAL DEVELOPMENT, AND OTHER TYPES OF DEVELOPMENT AS SHOWN ON THE PLANS.

THE PROPERTY IS TO BE DEVELOPED AS A RESIDENTIAL SUBDIVISION. THE LOTS ARE TO BE DEVELOPED AS SINGLE-FAMILY RESIDENCES, ROW HOUSES, TOWNHOUSES, APARTMENTS, CONDOS, MIXED-USE DEVELOPMENT, COMMERCIAL DEVELOPMENT, INDUSTRIAL DEVELOPMENT, AGRICULTURAL DEVELOPMENT, AND OTHER TYPES OF DEVELOPMENT AS SHOWN ON THE PLANS.

THE PROPERTY IS TO BE DEVELOPED AS A RESIDENTIAL SUBDIVISION. THE LOTS ARE TO BE DEVELOPED AS SINGLE-FAMILY RESIDENCES, ROW HOUSES, TOWNHOUSES, APARTMENTS, CONDOS, MIXED-USE DEVELOPMENT, COMMERCIAL DEVELOPMENT, INDUSTRIAL DEVELOPMENT, AGRICULTURAL DEVELOPMENT, AND OTHER TYPES OF DEVELOPMENT AS SHOWN ON THE PLANS.

THE PROPERTY IS TO BE DEVELOPED AS A RESIDENTIAL SUBDIVISION. THE LOTS ARE TO BE DEVELOPED AS SINGLE-FAMILY RESIDENCES, ROW HOUSES, TOWNHOUSES, APARTMENTS, CONDOS, MIXED-USE DEVELOPMENT, COMMERCIAL DEVELOPMENT, INDUSTRIAL DEVELOPMENT, AGRICULTURAL DEVELOPMENT, AND OTHER TYPES OF DEVELOPMENT AS SHOWN ON THE PLANS.

THE PROPERTY IS TO BE DEVELOPED AS A RESIDENTIAL SUBDIVISION. THE LOTS ARE TO BE DEVELOPED AS SINGLE-FAMILY RESIDENCES, ROW HOUSES, TOWNHOUSES, APARTMENTS, CONDOS, MIXED-USE DEVELOPMENT, COMMERCIAL DEVELOPMENT, INDUSTRIAL DEVELOPMENT, AGRICULTURAL DEVELOPMENT, AND OTHER TYPES OF DEVELOPMENT AS SHOWN ON THE PLANS.

### AMENDED FINAL PLAT

THE RESERVE AT HEATHER OAKS  
LOTS 68 THROUGH 123  
& 129 THROUGH 169  
IN SECTION 45, T13S - R21E  
AND SECTION 39, T14S - R21E  
ST. CHARLES PARISH, LOUISIANA

DATE: 6-24-24  
BY: [Signature]  
FOR: [Signature]

DATE: 6-24-24  
BY: [Signature]  
FOR: [Signature]

DATE: 6-24-24  
BY: [Signature]  
FOR: [Signature]

DATE: 6-24-24  
BY: [Signature]  
FOR: [Signature]

DATE: 6-24-24  
BY: [Signature]  
FOR: [Signature]

