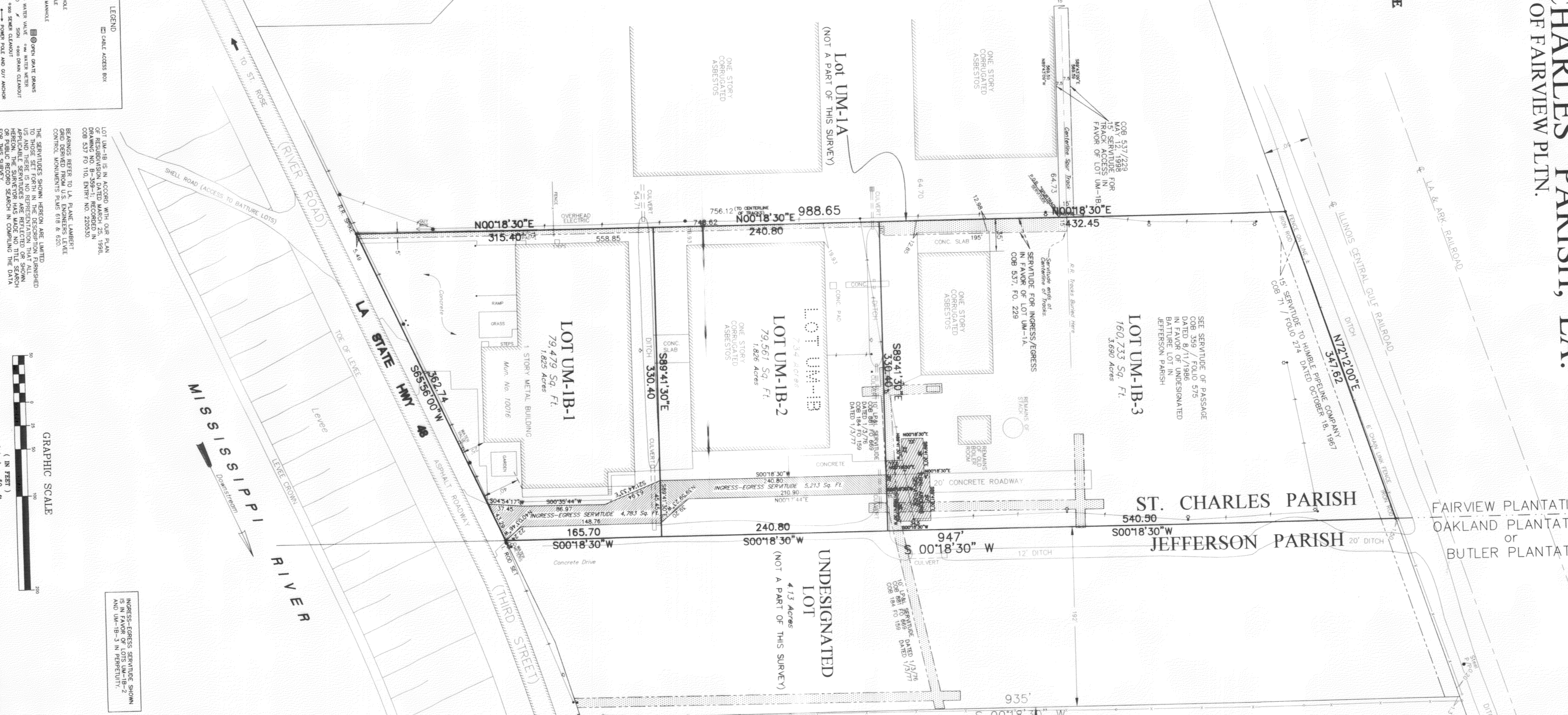
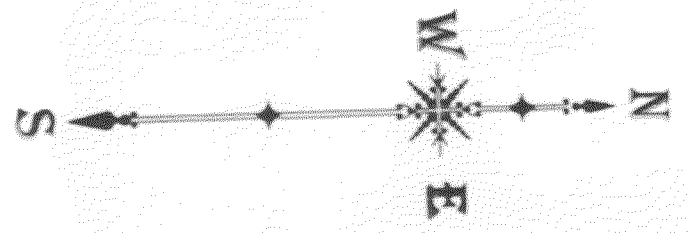
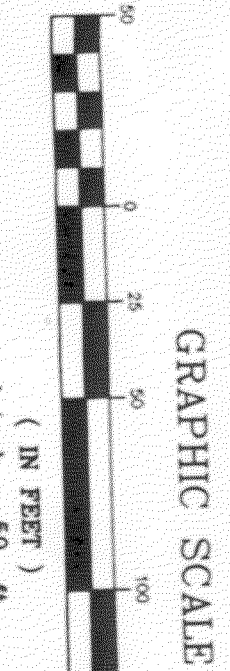


ST. CHARLES PARISH, LA.
PORTION OF FAIRVIEW PLTN.



- LEGEND
- ① DRAIN MANHOLE
 - ② WATER MANHOLE
 - ③ SEWER MANHOLE
 - ④ GAS MANHOLE
 - ⑤ TELEPHONE MANHOLE
 - ⑥ ELECTRIC MANHOLE
 - ⑦ WESTERN UNION MANHOLE
 - ⑧ OPEN GRATE DRAIN
 - ⑨ HYDRANT
 - ⑩ LIGHT STANDARD
 - ⑪ GAS VALVE
 - ⑫ POWER METER
 - ⑬ CROSS SET
 - ⑭ CABLE ACCESS BOX



Resubdivision of Lot UM-1B into Lots UM-1B-1, UM-1B-2, and UM-1B-3 made at request of Mr. Gregory Johns, New Orleans, La., January 25, 2011

This plat is a true and accurate delineation of a Survey made on the ground, under my supervision, and is in accord with a Class C Survey, as defined in the Minimum Standards for Property Boundary Surveys in the State of Louisiana.

January 25, 2011

Candolfo Kuhn
Professional Land Surveyor
La. License No. 4698

CANDOLFO KUHN, L.L.C.
LAND SURVEYORS
5415 PONTIAC ST.
NEW ORLEANS, LA 70123
e-mail: surveys@candolfokuhn.com
PHONE: 504-618-2810 FAX: 504-618-2811

APPROVALS	
CHAIR, PLANNING AND ZONING COMMISSION	DATE
CHAIR, ST. CHARLES PARISH COUNCIL	DATE
PARISH PRESIDENT	DATE