

**St. Charles Parish
Department of Waterworks**

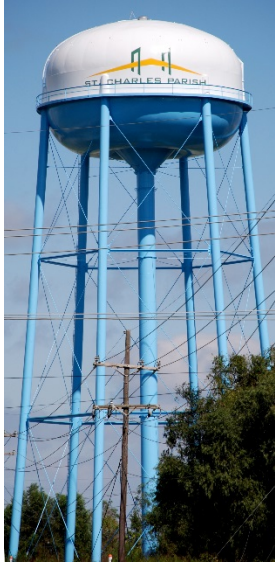
**Quality
On Tap!**

Our Commitment



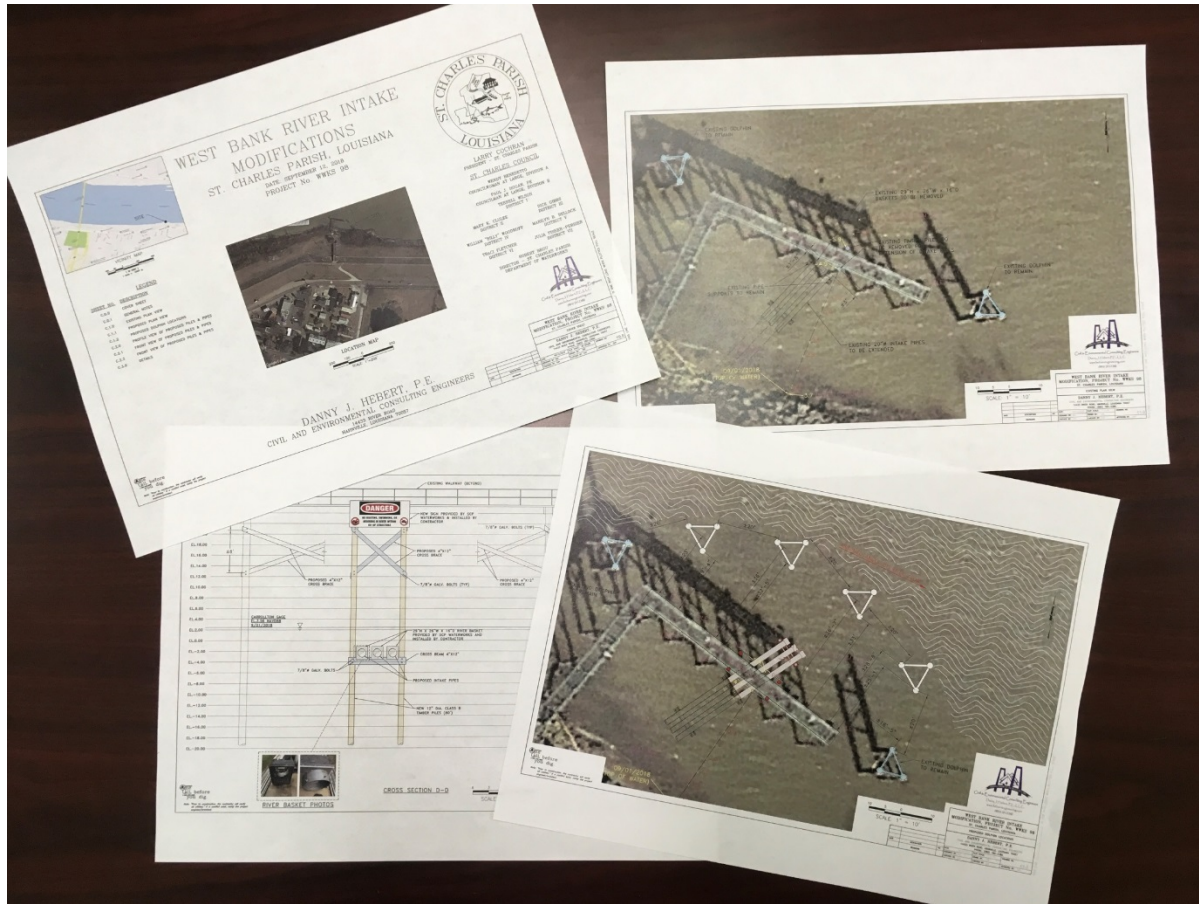
Our Profession

Water Tower Demolition



- Approximately 30 days per site
- Mobilize for St. Rose on Friday August 9
- Complete St. Rose around Sept. 6
- Mobilize for Montz on Sept. 4
- Montz demolition is dependent on River Stage below 11' at the Carrollton Gauge

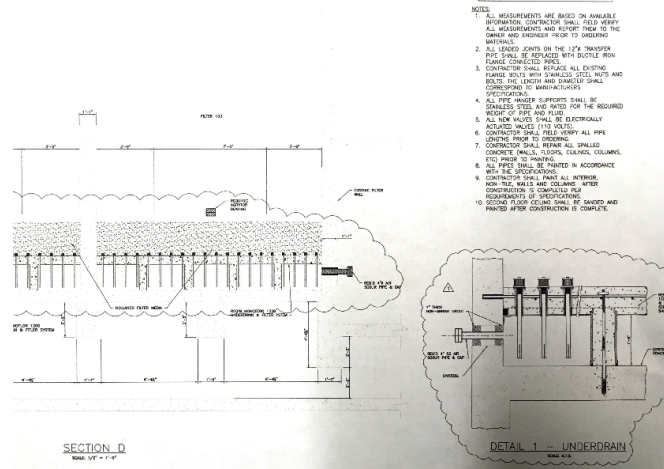
WB River Intake Modifications



WB A Plant Filter Upgrade



WATER SUPPLY SYSTEM
 ST. CHARLES PARISH
 WATERWORK DISTRICT NO. 2
 MILTON J. MONGRUE -- PRESIDENT
 COMMISSIONERS
 NOLAN R. OUBRE VICE PRES.
 STEPHEN J. KELLER, JR. SEC. TREAS.
 DR. SIDNEY J. SIMONEAUX
 EDMOND E. CROS
 JAMES E. VIAL, ATTORNEY
 HERBERT J. CASSEN, RESIDENT ENGINEER
 CONSULTING ENGINEER
 FROMMERZ ENGINEERS
 CONTRACTORS
 BARTLEY AND BINNINGS
 TREATMENT PLANT
 CLEMENT BETHOUY, JR., & CO.
 DISTRIBUTION SYSTEM
 JEFFERSON RIGGING & STEEL WORKS
 ELEVATED TANKS
 1951



- NOTES:
1. ALL MEASUREMENTS ARE BASED ON AVAILABLE INFORMATION. CONTRACTOR SHALL VERIFY ALL MEASUREMENTS AND REPORT THEM TO THE OWNER AND INSPECTOR PRIOR TO ORDERING MATERIALS.
 2. ALL LEAD JOINTS ON THE 17" TRANSFER PIPE SHALL BE REPLACED WITH DUCTILE IRON FLANGE CONNECTED PIPES.
 3. CONTRACTOR SHALL REPAIR ALL EXISTING FLANGE BOLTS WITH DAINLESS STEEL NUTS AND BOLTS, THE LENGTH AND TENSILE SHALL CORRESPOND TO MANUFACTURER'S SPECIFICATION.
 4. ALL PIPE BRIDGE SUPPORTS SHALL BE STAINLESS STEEL AND PAINTED FOR THE REQUIRED WEIGHT OF PIPE AND FLOOR.
 5. ALL NEW BOLTS SHALL BE ELECTROLYTICALLY ACTIVATED NUTS (E.A.N.) BOLTS.
 6. CONTRACTOR SHALL VERIFY ALL PIPE LENGTHS PRIOR TO ORDERING.
 7. CONTRACTOR SHALL REPAIR ALL SPALLED CONCRETE WALLS, COLUMNS, COLUMNS, ETC. PRIOR TO ORDERING.
 8. ALL PIPE TOLLS BE PAINTED IN ACCORDANCE WITH THE SPECIFICATIONS.
 9. CONTRACTOR SHALL PAINT ALL METALWORK WITH THE WALL AND COLUMN AFTER CONSTRUCTION IS COMPLETED PER REQUIREMENTS OF SPECIFICATION.
 10. SECOND FLOOR COLUMN SHALL BE SAWED AND PAINTED PRIOR CONSTRUCTION IS COMPLETE.

Quality
On Tap!
 Our Commitment  Our Profession

EB Transmission Line Repair/Replacement



SITE ACCESS



VALVE SITE



LEVEE ACCESS



ROADSIDE ACCESS



PIPELINE ROUTE



LEVEE ACCESS



Alpha Drive Waterline Relocation



Waterworks' personnel installing approximately 500 feet of 8" PVC water main and associated fittings

Department of Health Permits

John Bel Edwards
GOVERNOR



Rebekah E. Gee MD, MPH
SECRETARY

State of Louisiana
Louisiana Department of Health
Office of Public Health

April 26, 2019

Robert Brou
St. Charles Water District
P.O. Box 108
Luling, LA 70070

RE: PERMIT NUMBER: P-19-03-089-002
PWS ID No. 1089002
KS 9200 Chlorine Enhancer Pilot Program
St. Charles Water District 2
St. Charles Parish

Dear Mr. Brou,

Plans and specifications of the above named project have been reviewed and found to be in substantial conformity with applicable provisions of the Sanitary Code. The design is, therefore, Approved.

KS-9200 is a blended chemical used for pH adjustment and corrosion control and will be used on four to six month pilot program. The chemical's maximum rated NSF dosage is 200 ppm. The trial is to feed the KS-9200 in a range of 5 ppm to 50 ppm.

The proposed chemicals are to be fed at less than their NSF maximum rated dosage. They will also be stored in accordance to the manufacturers recommendations.

In the event that it is determined at some point in the future that a design error escaped our detection during our review of these plans and specifications, that oversight shall not relieve you, the applicant, of the responsibility for complete compliance with the applicable requirements of the Louisiana Administrative Code [particularly, LAC 51 (Public Health-Sanitary Code) and LAC 48 (Public Health - General)], specifically including correcting the violations inadvertently overlooked.

Please feel free to contact me at (504) 599-1564 should you have any questions regarding the above matter.

Sincerely,

Alicia Martinez, P.E.
District 1 Engineer
LDH/OPH, Engineering Services

OFFICE OF PUBLIC HEALTH * METROPOLITAN REGIONAL OFFICE
1450 Poydras St., Suite 1827 * NEW ORLEANS, LOUISIANA 70112
PHONE - 504/599-0100 * FAX - 504/599-0200
AN EQUAL OPPORTUNITY EMPLOYER

- Pilot completed for Micro Carbon Solution (KS-9001) July/August 2017
- Consolidation of District #1 (East) & District #2 (West) into St. Charles Parish Department of Waterworks
- Pilot Study for Chlorine Enhancer (KS-9200) began in April 2019



St. Charles Parish Department of Waterworks

Questions?

