

# St. Charles Parish

---

## Geographic Information Systems

January 6, 2025

Luis Martinez

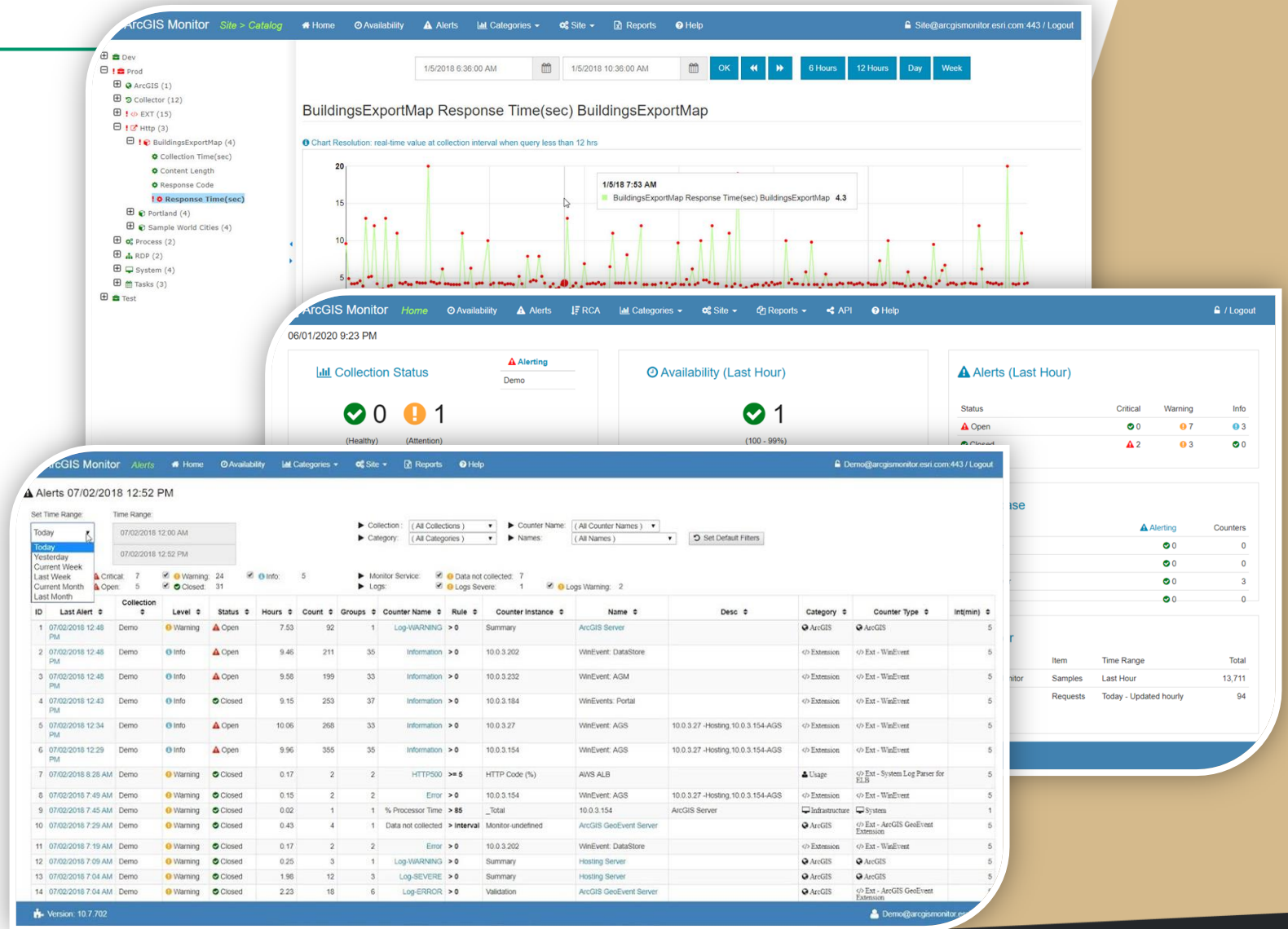


# Projects 2025

## GIS Monitor

Monitor the health of GIS system.

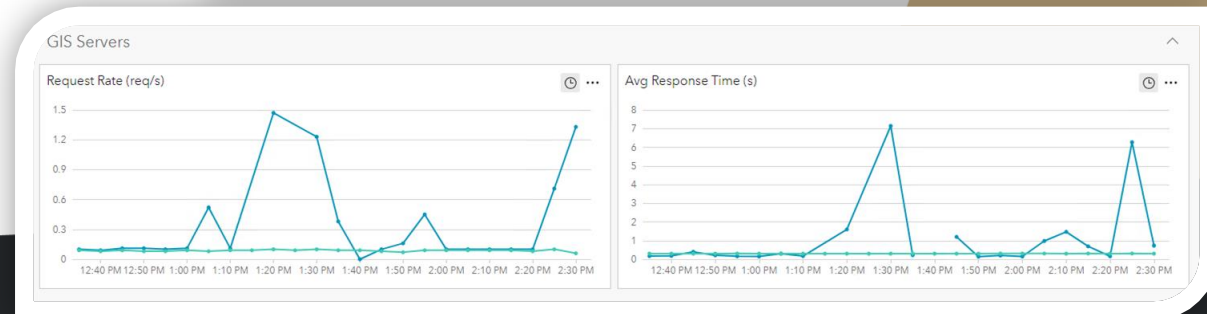
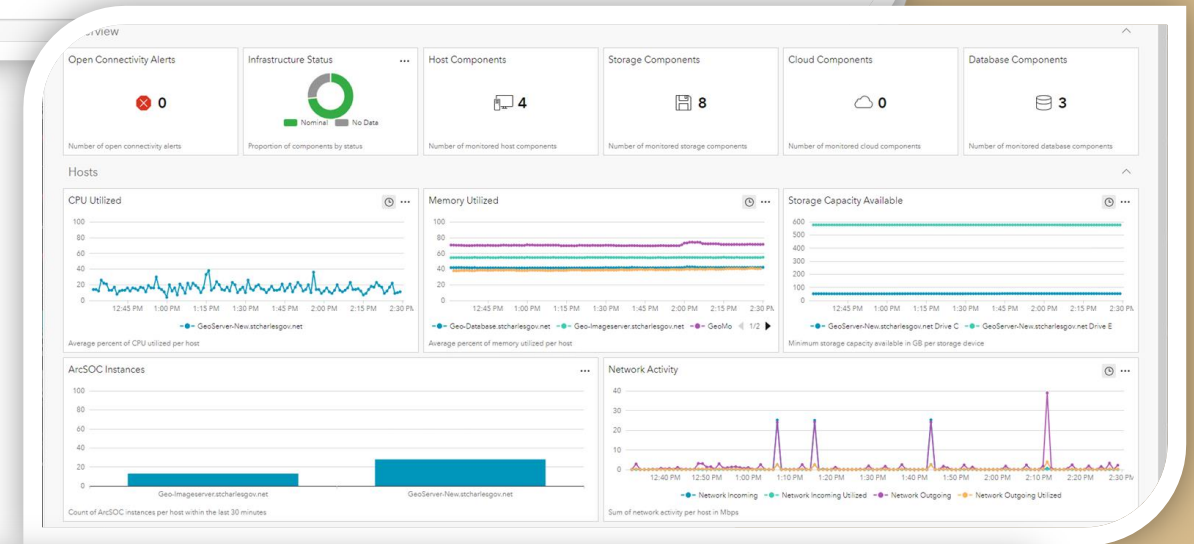
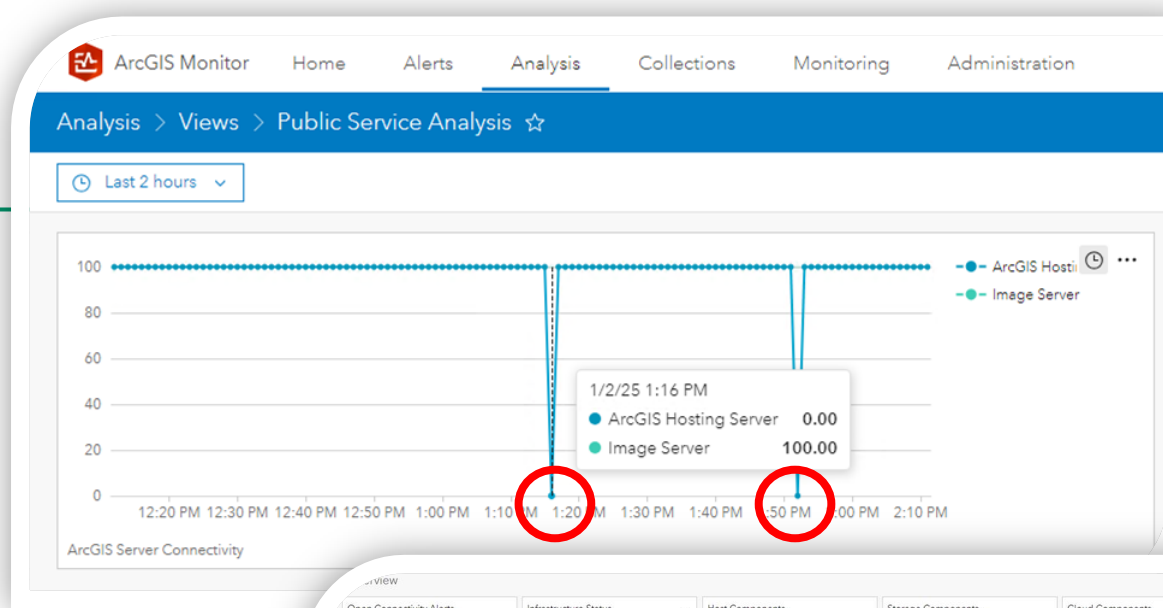
Provides awareness of system usage and performance to get the most from GIS investment.



# Projects 2025

## GIS Monitor

- Analysis provide sense of the health, performance, & usage of GIS system.
- Useful for identifying patterns that require further investigation.
- Identify patterns of utilization for hardware and network resources.



# Projects 2025

## GIS Data Hub



Cloud-based engagement platform that will enable the Parish to communicate more effectively with departments and residents alike.

Catalog of searchable content for shareable content to reduce Public Records Requests (PRR)

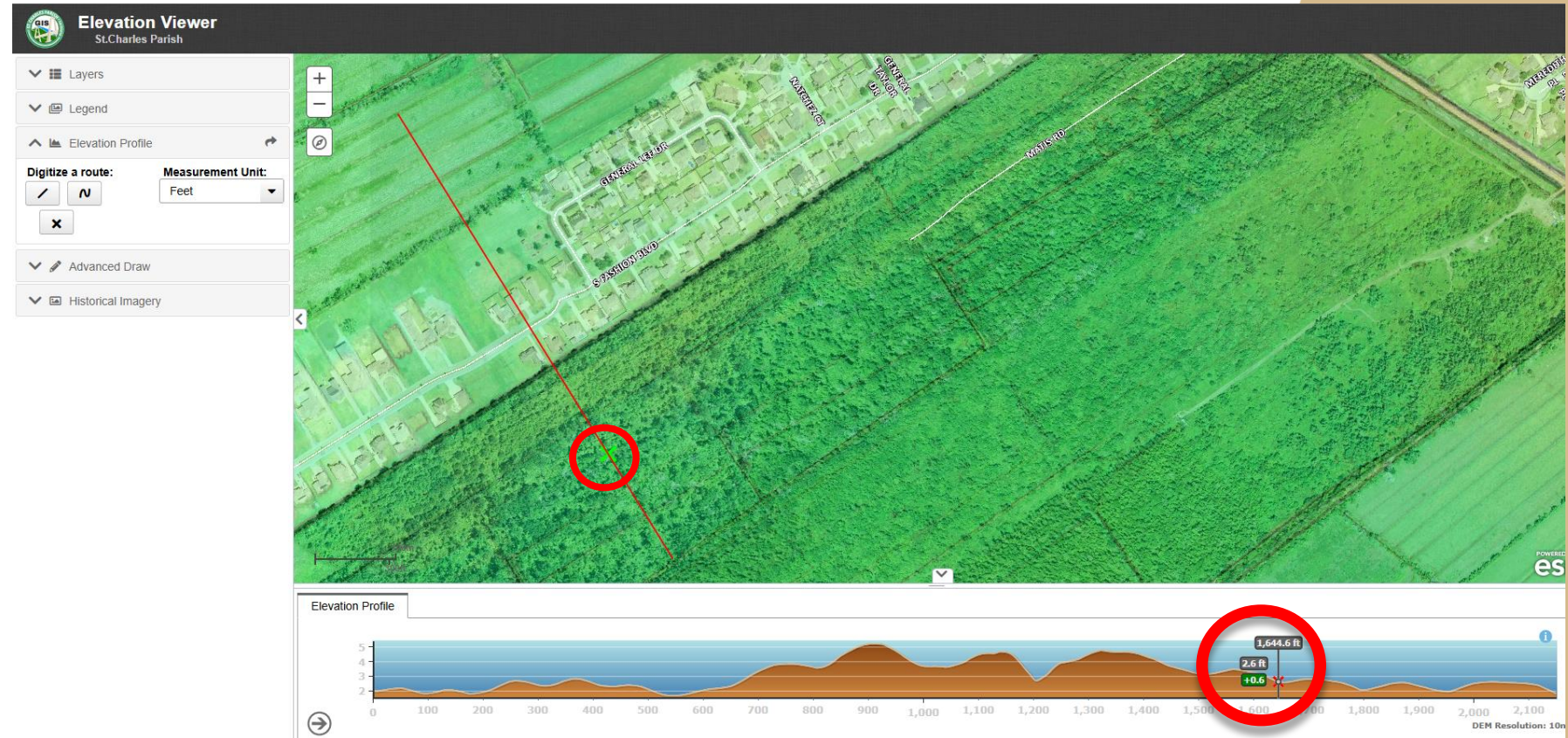




# Projects 2025

## GIS Elevation Viewer

- Generates a graph of elevations along a path in the map.
- Profile is calculated using the ground elevation surface in a map (2D)



# Questions & Comments

---

**Thank You!**

Luis Martinez

Geographic Information Systems

[lmartinez@stcharlesgov.net](mailto:lmartinez@stcharlesgov.net)

Phone: (504) 235 - 1902

