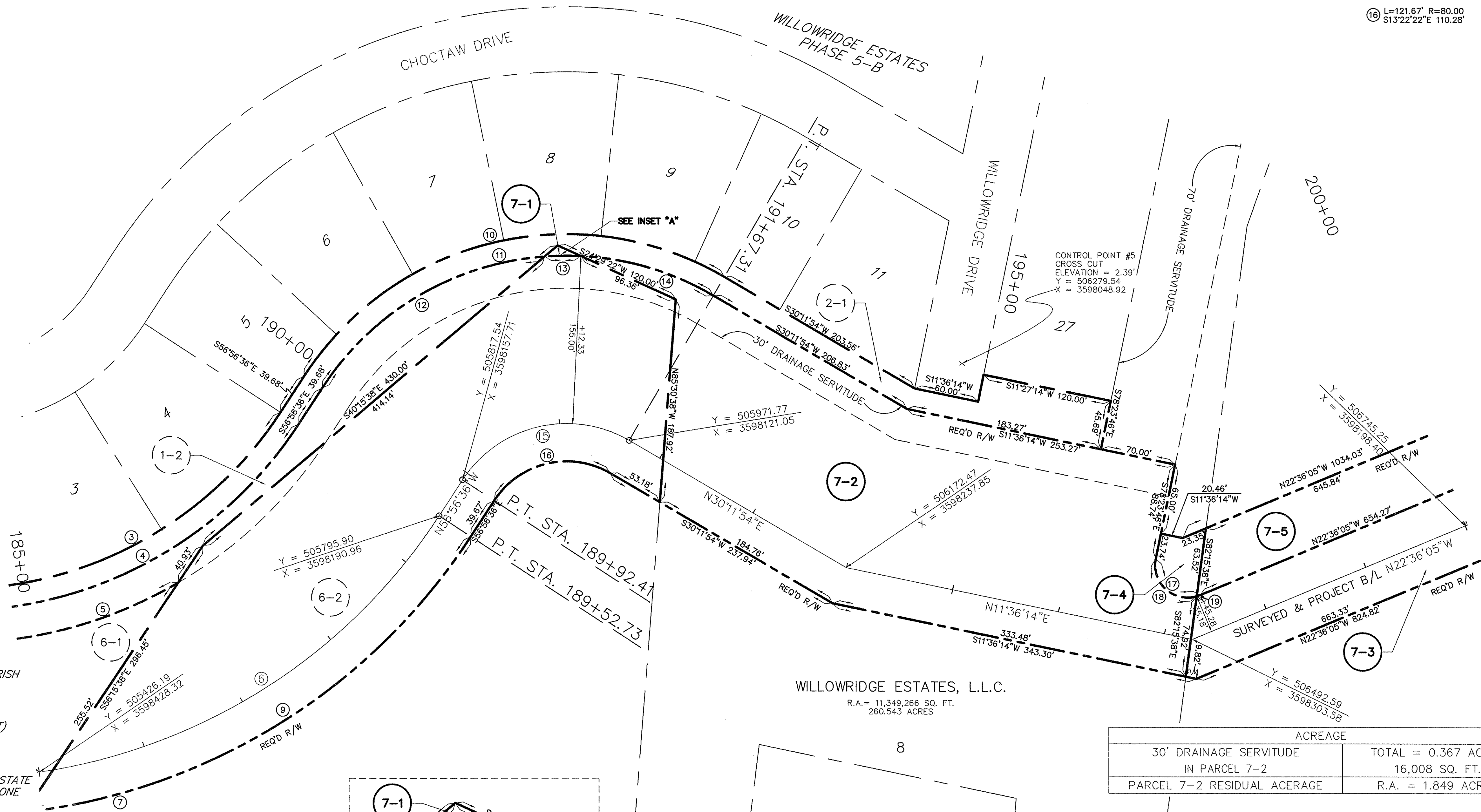


SOUTHEASTERN LAND DISTRICT
WEST OF THE MISSISSIPPI RIVER
T 14 S - R 21 E
SECTIONS 4, 5, 39 & 40

PROJECT B/L
CURVE DATA:

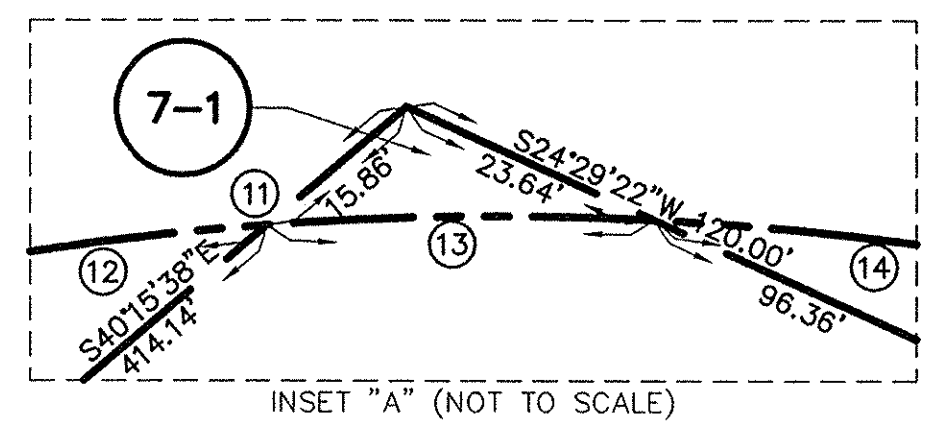
Curve No.	Length (L)	Radius (R)
③	516.34'	360.00'
④	545.03'	380.00'
⑤	397.87'	410.00'
⑥	767.34'	535.00'
⑦	817.54'	570.00'
⑧	501.01'	350.00'
⑨	441.06'	290.00'
⑩	410.64'	270.00'
⑪	247.92'	170.00'
⑫	33.64'	270.00'
⑬	129.08'	270.00'
⑭	174.91'	115.00'
⑮	65.03'	30.00'
⑯	61.75'	30.00'
⑰	3.29'	30.00'



ELEVATIONS BASED ON:
DESIGNATION: BAO1 SMO1
PID: DH3816
STATE/COUNTY: LA/ST. CHARLES PARISH
USGS QUAD: LULING (1992)
NAD 83 (2007): 29°55'01.64"(N)
90°18'58.55"(W) ADJUSTED
NAVD 88: 1.74 (METERS) 5.70 (FEET)
GPS OBS: 2006.81
RETRIEVAL DATE: DECEMBER 8, 2010
BEARINGS SHOWN HEREON ARE GRID
BEARINGS BASED ON THE LOUISIANA STATE
PLANE COORDINATE SYSTEM SOUTH ZONE
NAD 83 (1992).

LEGEND

---	REQUIRED RIGHT OF WAY LINE
---	PROPERTY LINE
---	LOT LINE
---	LIMITS OF CONSTRUCTION
---	EXISTING RIGHT OF WAY LINE
---	SECTION LINE
---	DRAINAGE SERVITUDE



ACREAGE	
30' DRAINAGE SERVITUDE IN PARCEL 7-2	TOTAL = 0.367 ACRES 16,008 SQ. FT.
PARCEL 7-2 RESIDUAL ACERAGE	R.A. = 1.849 ACRES

PARCEL	OWNER	AQUISITION	AREA	ESTATE TYPE
7-5	RATHBORNE LAND COMPANY, L.L.C.	C.O.B. AA PG. 293 DEC. 31, 1927	0.823 AC.	FEE
7-4	WILLOWRIDGE ESTATES, L.L.C.	C.O.B. 498 PG. 529 AUG. 31, 1995	0.051 AC.	FEE
7-3	RATHBORNE LAND COMPANY, L.L.C.	C.O.B. AA PG. 293 DEC. 31, 1927	1.068 AC.	FEE
7-2	WILLOWRIDGE ESTATES, L.L.C.	C.O.B. 498 PG. 529 AUG. 31, 1995	2.217 AC.	FEE
7-1	RATHBORNE LAND COMPANY, L.L.C.	C.O.B. AA PG. 293 DEC. 31, 1927	0.004 AC.	FEE

DATE	DESCRIPTION	BY
11/17/2014	REVISED TO SHOW PARCEL 7-4 & 7-5	TPT

LAFORCHE BASIN LEVEE DISTRICT
AND
PARISH OF ST. CHARLES

RIGHT OF WAY MAP
WEST BANK HURRICANE PROTECTION LEVEE - PHASE II
PERIMETER OF WILLOWRIDGE ESTATES FROM THE
BLOUIN CANAL TO THE DAVIS POND WEST GUIDE LEVEE,
ST. CHARLES PARISH, LOUISIANA
STA. 100+00.00 TO 212+46.34

STEPHEN P. FLYNN
REGISTERED PROFESSIONAL
LAND SURVEYOR

RIVERLANDS SURVEYING COMPANY
505 HEMLOCK STREET
LAPLACE, LA. 70088
1-800-245-8982
986-668-6596

STEPHEN P. FLYNN, P.L.S.
LA. ST. REG. NO. 4668

DATE: 06/22/2011 / 100% SCALE: 1" = 50'
DRAWN BY: T.P.T. COMPUTED BY: S.P.F.

SHEET NO. 7

RSC DWG NO.: L1553_1321_RSC_ROW

S:\Land Projects R2\dwgs\L1553_1321\dwg\L1553_1321_RSC_ROW_Updated 11-17-2014.dwg 11/26/2014 9:57:25 AM CST