

Ord.

2014-0383

**INTRODUCED BY: V.J. ST. PIERRE, JR., PARISH PRESIDENT
(DEPARTMENT OF PLANNING AND ZONING)**

ORDINANCE NO. 14-12-5

An ordinance to approve a resubdivision of lots indicated on a plat by Riverlands Surveying Company, dated August 13, 2014, as Portion of Parcel A of Ridgeland Properties LLC, Mrs. Henrietta Hines, and Lot 21-A Magnolia Ridge Ranchettes Phase 2A into Lots 21-A-1, 21-A-2, and 21-A-3, located in Boutte, St Charles Parish, LA.

WHEREAS, at their November 6, 2014 meeting, the Planning Commission recommended approval of PZS-2014-48, a resubdivision of lots indicated on a plat by Riverlands Surveying Company, dated August 13, 2014, as Portion of Parcel A of Ridgeland Properties LLC, Mrs. Henrietta Hines, and Lot 21-A Magnolia Ridge Ranchettes Phase 2A into Lots 21-A-1, 21-A-2, and 21-A-3, located in Boutte, St Charles Parish, LA; and,

WHEREAS, the Planning & Zoning Commission approved a positive recommendation of the resubdivision of lots indicated on a plat by Riverlands Surveying Company, dated August 13, 2014, as Portion of Parcel A of Ridgeland Properties LLC, Mrs. Henrietta Hines, and Lot 21-A Magnolia Ridge Ranchettes Phase 2A into Lots 21-A-1, 21-A-2, and 21-A-3, located in Boutte, St Charles Parish, LA; and,

WHEREAS, the St. Charles Parish Subdivision Ordinance of 1981 (as amended) stipulates that consideration of a minor resubdivision by the Planning and Zoning Commission also requires approval by the Parish Council.

THE ST. CHARLES PARISH COUNCIL HEREBY ORDAINS:

SECTION I. That the positive recommendation of a resubdivision of lots indicated resubdivision of lots indicated on a plat by Riverlands Surveying Company, dated August 13, 2014, as Portion of Parcel A of Ridgeland Properties LLC, Mrs. Henrietta Hines, and Lot 21-A Magnolia Ridge Ranchettes Phase 2A into Lots 21-A-1, 21-A-2, and 21-A-3, located in Boutte, St Charles Parish, LA is hereby approved.

SECTION II. The Parish President is hereby authorized to execute the attached surveys by Riverlands Surveying Company, dated August 13, 2014.

The foregoing ordinance having been submitted to a vote, the vote thereon was as follows:

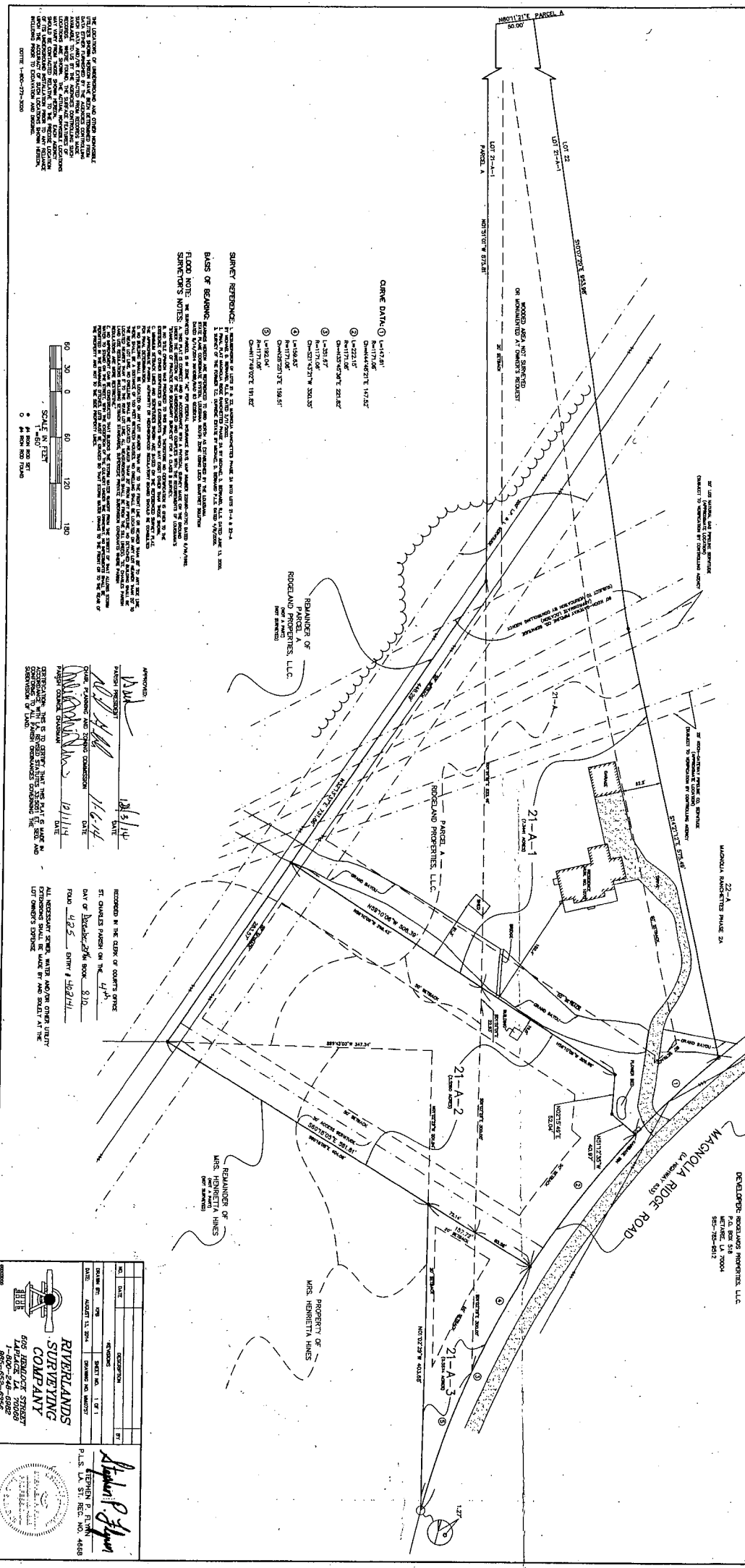
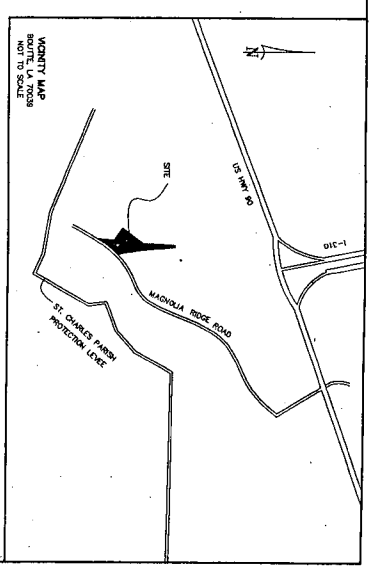
- YEAS: SCHEXNAYDRE, LEWIS, WILSON, WOODRUFF, HOGAN, COCHRAN, FLETCHER, FISHER-PERRIER
- NAYS: NONE
- ABSENT: BENEDETTO

And the ordinance was declared adopted this 1st day of December 2014, to become effective five (5) days after publication in the Official Journal.

CHAIRMAN: _____
 SECRETARY: _____
 DLVD/PARISH PRESIDENT: 12/3/14
 APPROVED: DISAPPROVED: _____
 PARISH PRESIDENT: [Signature]
 RETD/SECRETARY: 12/3/14
 AT: 11:40a RECD BY: [Signature]

RECORDED IN THE ST. CHARLES PARISH
 CLERK OF COURT OFFICE
 ON December 4, 2014
 AS ENTRY NO. 402141
 IN MORTGAGE/CONVEYANCE BOOK
 NO. 810 FOLIO 425

**SURVEY PLAT AND RESUBDIVISION FOR A BOUNDARY AGREEMENT OF A PORTION OF PARCEL A
 OF RIDGELAND PROPERTIES, L.L.C., A PORTION OF THE PROPERTY MRS. HENRIETTA HINES &
 LOT 21-A OF MAGNOLIA RANCHETTES PHASE 2A INTO LOTS HERBIN DESIGNATED
 LOT 21-A-1, LOT 21-A-2 & LOT 21-A-3
 SITUATED IN SECTION 11, T-14-S, R-20-E
 BOULTE, ST. CHARLES PARISH, LOUISIANA**



CURVE DATA:

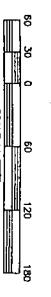
- ① Point 111.00'
- ② Point 111.00'
- ③ Point 111.00'
- ④ Point 111.00'
- ⑤ Point 111.00'
- ⑥ Point 111.00'
- ⑦ Point 111.00'
- ⑧ Point 111.00'
- ⑨ Point 111.00'
- ⑩ Point 111.00'
- ⑪ Point 111.00'
- ⑫ Point 111.00'
- ⑬ Point 111.00'
- ⑭ Point 111.00'
- ⑮ Point 111.00'
- ⑯ Point 111.00'
- ⑰ Point 111.00'
- ⑱ Point 111.00'
- ⑲ Point 111.00'
- ⑳ Point 111.00'
- ㉑ Point 111.00'
- ㉒ Point 111.00'
- ㉓ Point 111.00'
- ㉔ Point 111.00'
- ㉕ Point 111.00'
- ㉖ Point 111.00'
- ㉗ Point 111.00'
- ㉘ Point 111.00'
- ㉙ Point 111.00'
- ㉚ Point 111.00'
- ㉛ Point 111.00'
- ㉜ Point 111.00'
- ㉝ Point 111.00'
- ㉞ Point 111.00'
- ㉟ Point 111.00'
- ㊱ Point 111.00'
- ㊲ Point 111.00'
- ㊳ Point 111.00'
- ㊴ Point 111.00'
- ㊵ Point 111.00'
- ㊶ Point 111.00'
- ㊷ Point 111.00'
- ㊸ Point 111.00'
- ㊹ Point 111.00'
- ㊺ Point 111.00'
- ㊻ Point 111.00'
- ㊼ Point 111.00'
- ㊽ Point 111.00'
- ㊾ Point 111.00'
- ㊿ Point 111.00'

SURVEY REFERENCE: 1. COMMERCIAL MAP OF BOULTE, ST. CHARLES PARISH, LOUISIANA, SHOWING THE LOCATION OF THE PROPERTY HEREIN, AS SHOWN ON SAID MAP.

CLASS OF RECORD: 1. SURVEY PLAT AND RESUBDIVISION FOR A BOUNDARY AGREEMENT OF A PORTION OF PARCEL A OF RIDGELAND PROPERTIES, L.L.C., A PORTION OF THE PROPERTY MRS. HENRIETTA HINES & LOT 21-A OF MAGNOLIA RANCHETTES PHASE 2A INTO LOTS HERBIN DESIGNATED LOT 21-A-1, LOT 21-A-2 & LOT 21-A-3 SITUATED IN SECTION 11, T-14-S, R-20-E BOULTE, ST. CHARLES PARISH, LOUISIANA.

FLOOD NOTE: THE SURVEYED AREA IS NOT FLOODED BY ANY OF THE ADJACENT WATER BODIES AND IS NOT SUBJECT TO ANY FLOODING HAZARD.

SURVEYOR'S NOTES: 1. THE SURVEY WAS MADE BY ME OR UNDER MY CLOSE PERSONAL SUPERVISION AND TO THE BEST OF MY KNOWLEDGE AND BELIEF IT IS TRUE AND CORRECT.



APPROVED:

[Signature] DATE: 11/11/14

RECORDED IN THE BOOK OF SAID PARISH:

ST. CHARLES PARISH ON THE 11/11/14

DATE: 11/11/14

BOOK: 810

PAGE: 425

BY: J. HERBIN

ALL NECESSARY STAMPS, MARKS AND/OR OTHER JUSTLY EXTENDING SHALL BE MADE BY AND BEAT AT THE SURVEYOR'S EXPENSE.

NO.	DATE	DESCRIPTION	BY

RIVERLANDS SURVEYING COMPANY
 505 BROADWAY STREET
 LAUREL, LA 70009
 1-800-248-0022
 504-835-0500

P.L.S. LIST ST. REC. NO. 4668
 STEVEN P. FLYNN
[Signature]

Doc. 14-12-5