



WELCOME



Commissioners



**D. Paul
Robichaux**
PRESIDENT



**Joseph M.
Scontrino III**
EXECUTIVE VP



**P. Joey
Murray III**
TREASURER



**Stanley
Bazile**
SECRETARY

**Robert "Poncho"
Roussel**
VICE PRESIDENT



**Kelly
Buckwalter**
VICE PRESIDENT



**Patrick C.
Sellars**
VICE PRESIDENT



**Judy
Songy**
VICE PRESIDENT

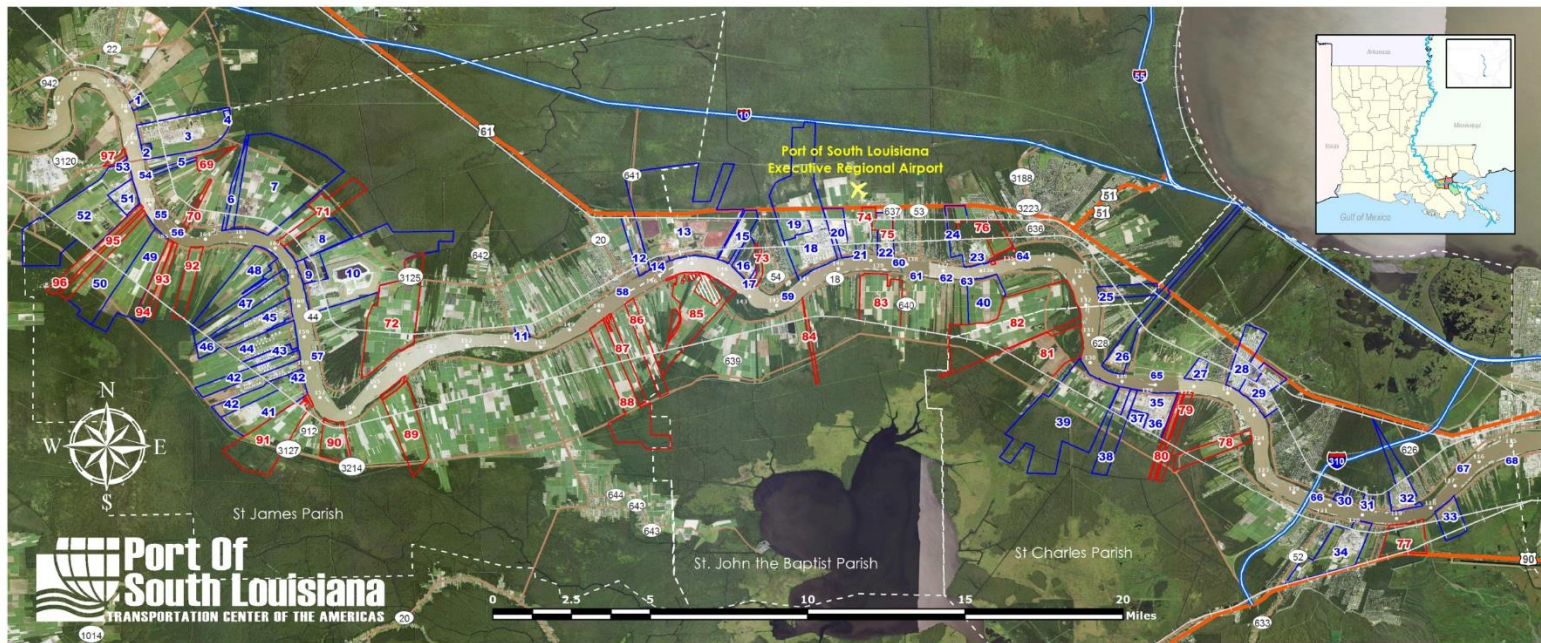


**Whitney
Hickerson**
VICE PRESIDENT

Jurisdiction

Pipelines

33 Crude
159 NG



EXISTING INDUSTRY

1 Dupont	18 Marathon Petroleum Corporation	35 Dow - St. Charles	52 Mosaic - Faustina
2 Lafarge Corporation	19 Pinnacle Polymers	36 Arkema	53 Valero Asphalt
3 Shell - Convent	20 Cargill Terre Haute Elevator / Bulk Liquid	37 Galata Chemicals	54 Associated Terminals Sunshine Midstream Buoy
4 Air Products & Chemicals	21 ADM - Reserve	38 Occidental Chemical	55 Sunshine Anchorage
5 Yara North America	22 Globalplex Intermodal Terminal	39 Entergy / Waterford 1, 2, 3	56 Associated Terminals Midstream Buoy
6 Zen-Noh Grain	23 Denka Performance Elastomer LLC	40 EuroChem	57 Ryan Walsh Stevedoring Midstream Buoy
7 Nucor Steel Louisiana, LLC	24 DowDuPont	41 Yuhuang Chemical Company	58 Grandview Anchorage
8 Occidental Chemical	25 Bayou Steel Group	42 Plains All American	59 St. John Fleet Midstream Buoy
9 SunCoke Convent Marine Terminal	26 Entergy / Little Gypsy	43 Locap, Inc.	60 Reserve Midstream Buoy
10 Mosaic - Uncle Sam	27 W.R. Grace	44 Shell Pipeline	61 Reserve Anchorage
11 ADM - Paulina	28 Shell - Norco	45 NuStar	62 Capital Marine Tigerville Midstream Buoy
12 Louisiana Sugar Refinery	29 Valero - St. Charles	46 Syngas Energy	63 Gold Mine Fleet Midstream Buoy
13 Noranda Aluminum	30 ADM - Destrehan	47 Ergon / Sun Fuel Midstream	64 CGB Midstream Buoy
14 Rain Cil	31 Bunge North America	48 South Louisiana Methanol	65 Bonne Carre Anchorage
15 Pin Oak Terminals	32 International Matex Tank Terminals (MTT)	49 Gavilon Agriculture, LLC	66 ADM Midstream Buoy
16 Nalco/Ecobal	33 ADM - Ama	50 Formosa Plastics	67 Ama Anchorage
17 Evonik	34 Monsanto	51 Americas Styrenics	68 Kenner Bend Anchorage

HEAVY INDUSTRIAL SITES

69 Ancient Domain +/- 225 acres	84 Whiterose +/- 300 acres; 854' rf
70 Balot & Whitehall +/- 240 acres; 980' rf	85 Robert Brothers Farm +/- 1,582 acres; 8,448' rf
71 Shady Grove +/- 517 acres; 1,690' rf	86 Goodwill +/- 500 acres; 1,500' rf
72 Welham +/- 2,300 acres; 2,000' rf	87 Succeed +/- 450 acres; 1,530' rf
73 Hope +/- 283 acres; 1,500' rf	88 PSL St. James Property +/- 1,600 acres; 2,400' rf
74 Guidry Property +/- 84 acres	89 Bessie-K +/- 1,245 acres; 4,900' rf
75 PSL Globalplex (Certified Site) +/- 130 acres	90 Rich Bend +/- 500 acres; 1,300' rf
76 DuPont +/- 697 acres; 4,400' rf	91 Zeiringue / St. Emma +/- 1,464 acres; 2,254' rf
77 Davis Levert +/- 100 acres; 2,640' rf	92 Savannah +/- 444 acres; 1,954' rf
78 Home Place +/- 375 acres	93 Minnie & St. Louis +/- 235 acres; 650' rf
79 Pelican-Occidental +/- 489 acres; 1,373' rf	94 St. Alice +/- 321 acres; 670' rf
80 Solaport +/- 99 acres; 263' rf	95 Elina (Lower) +/- 470 acres; 790' rf
81 St. Charles Intermodal Terminal +/- 1,165 acres; 3,601.67' rf	96 Elina (Upper) +/- 406 acres; 700' rf
82 Glendale Hymelia +/- 2,500 acres; 5,808' rf	97 Dunhill +/- 51 acres; 1,100' rf
83 Columbia +/- 900 acres; 3,300' rf	

Petrochemical, Chemical & Fertilizer Facilities

Air Products

Galata Chemicals

American Styrenics

Occidental Chemical

Rain CII

Denka

Monsanto

Air Liquide

Dow St. Charles

Nalco

Evonik

Mosaic

Pinnacle Polymers

Momentive

Grain Facilities

GRAIN ELEVATORS (7) – 101.6M SHORT TONS

Zen-Noh Grain

Cargill

ADM – Destrehan

Bunge North American

ADM – Reserve

ADM – Ama

ADM – Paulina

Oil Refineries/Storage

OIL REFINERIES (4) – 1,374M BARRELS/DAY

Marathon Petroleum

Shell - Convent

Shell - Norco

Valero – St. Charles

OIL STORAGE (10) – 217M BARRELS

Marathon Petroleum

Shell - Convent

Shell - Norco

Valero – St. Charles

Ergon

IMTT

LOCAP

NuStar

MPLX [Marathon]

Plains All American

TENANTS

Evonik

NATCO

Food Service

Barton Mines

Baumer Foods

Associated

Terminals

LaFargeHolcim

ADM

CRC

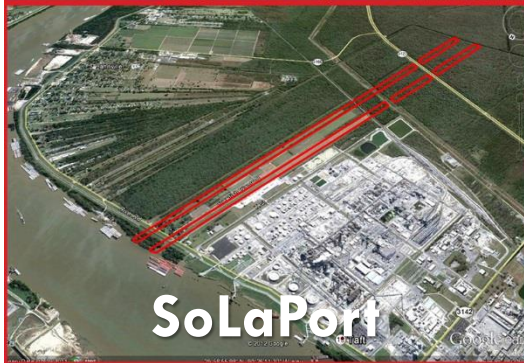
Pinnacle Polymers



Globalplex Intermodal Terminal (335 Acres)

Jobs at
Globalplex =
315

- Bulk cargo dock; general cargo dock w/adjacent finger pier; over 716K sq.ft. covered storage; 177K sq.ft. open storage; 130-acre certified site
- Stevedoring Firm: Associated Terminals



Port-Owned Facilities

Including Globalplex's general cargo terminal and bulk cargo terminal, Port of South Louisiana owns 8 facilities

**#16
LARGEST
TONNAGE
PORT
IN THE
WORLD**

IHS Markit Maritime
and Trade Data,
2011-2016



Port of South Louisiana is ranked as the #1

LARGEST TONNAGE PORT IN THE WESTERN HEMISPHERE!

303M short tons | 4,402 vessels | 63,638 barges (2018)



Port of South Louisiana is ranked as the #1

GRAIN EXPORTER *IN THE UNITED STATES!*

Seven grain elevators | Ships to over 90 countries



Port of South Louisiana is ranked as the #1

FOREIGN TRADE ZONE IN THE U.S. FOR MERCHANDISE RCVD!

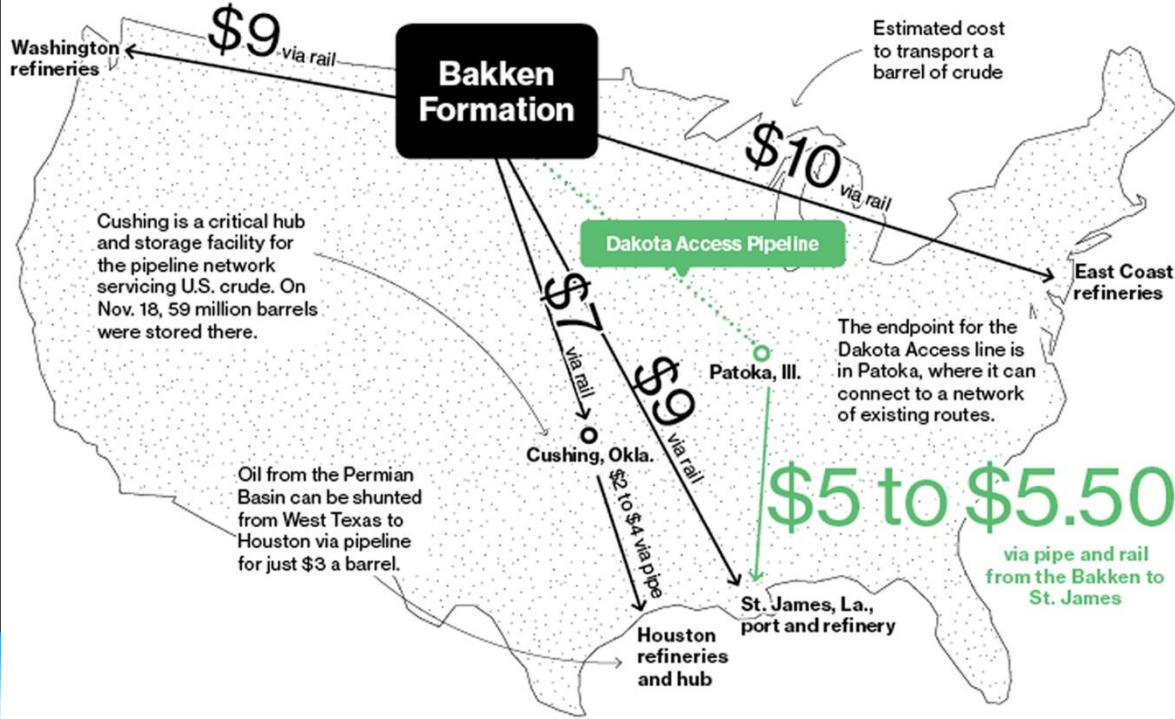
15 zones | \$49.5B received | 10,600 employed (2017)

PIPELINES
33 crude
159 NG



Port of South Louisiana is ranked as the #2

***ENERGY TRANSFER PORT* IN THE UNITED STATES!**
4 oil refineries | 10 crude oil storage terminals



Shipping crude from Brakken is expensive, according to Valero & Bloomberg Intelligence estimates...

Energy Transfer Pipelines

...DAKOTA ACCESS TO BAYOU BRIDGE would make it more economically viable





Energy Transfer Pipelines

BAYOU BRIDGE



Largest Tonnage Port in the Western Hemisphere



OVER 303M STs VIA
4,402 vessels
63,638 barges

LARGEST GRAIN PORT
(OVER 50% OF ALL U.S. EXPORTS)
seven grain elevators



VALUE:
EXPORTS - OVER \$42.2B
IMPORTS - OVER \$40.9B

#2 ENERGY TRANSFER PORT
*4 oil refineries &
10 crude storage terminals*



OVER 40 LIQUID AND
DRY BULK TERMINALS

FTZ #124 RANKED 1ST
*15 zones
*\$49.5B in merchandise (2017)



Port Tonnage

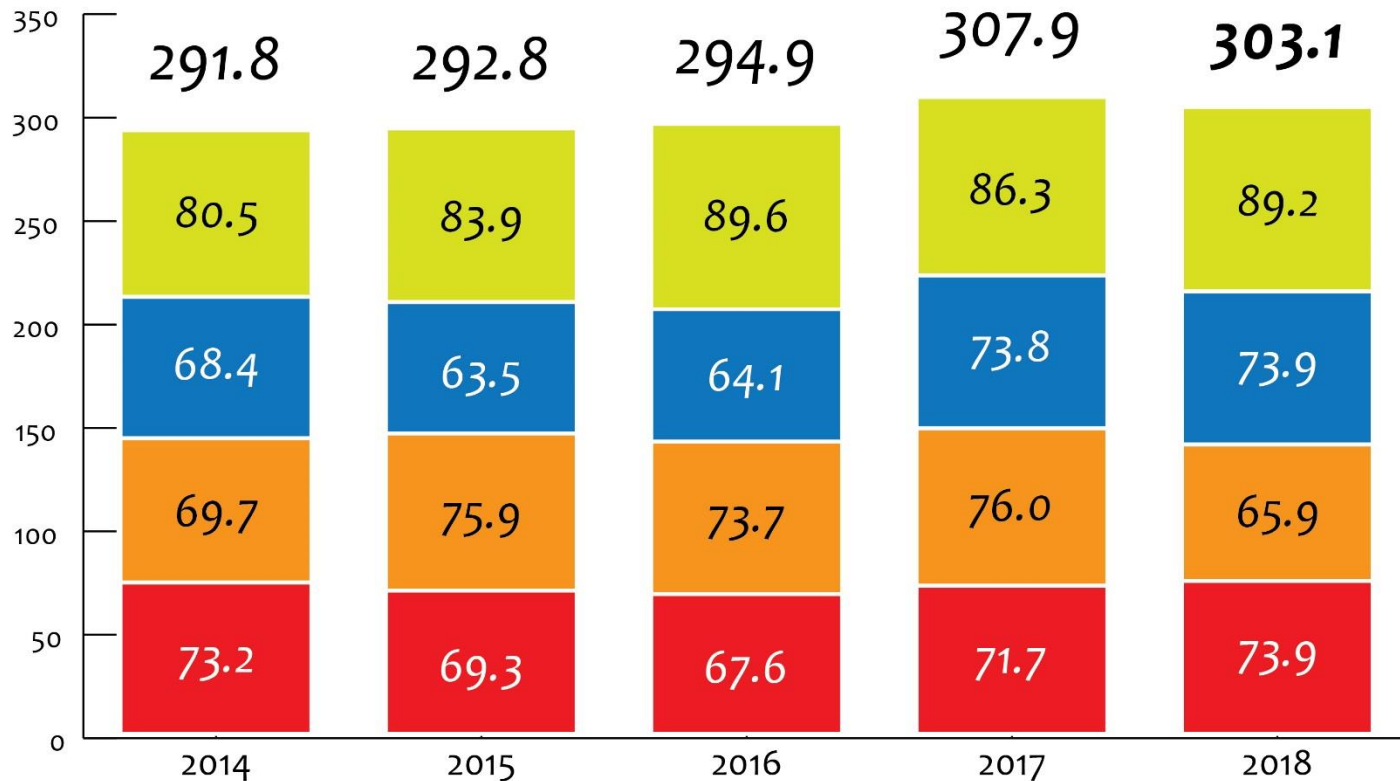
EXPORTS

IMPORTS

DOMESTIC SHIPPED

DOMESTIC RECEIVED

**TOTAL
TONNAGE**
*in million
short tons*



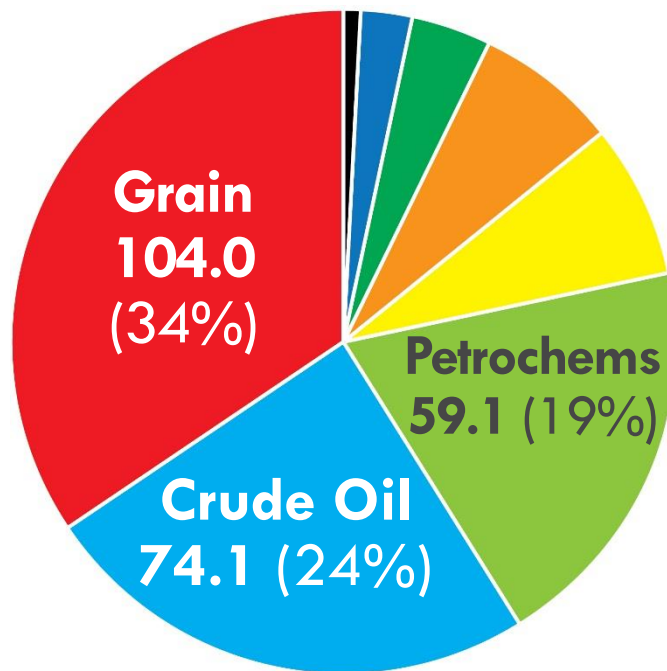
Commodities Breakdown

2018

303.1M
short tons

Vessels:
4,402

Barges:
63,638



Grain

Maize	48.3
Soybean	41.0
Animal Feed	10.4
Wheat	2.7
Sorghum + Rice	1.5

Chemicals/Fertilizers	22.2	(7%)
Coal/Lignite/Coke	21.7	(7%)
Ores/Phosphate Rock	11.4	(4%)
Steel Products	7.9	(3%)
Other	2.7	(<1%)
Other	1.10	
Edible Oils	0.80	
Sugar/Molasses	0.07	

Top Trading Partners

EXPORTS



Mexico – 6.8M st
grain (corn); petrochemicals



Egypt – 4.9M st
grain; coal



Colombia – 4.8M st
grain (corn); crude



Japan – 4.6M st
grain (corn); crude



Netherlands – 4.4M st
coal; grain (soybean)

IMPORTS

Jamaica – 3.3M st
ores/phosphates



Brazil – 2.8M st
misc. cargo; steel; crude



Peru – 2.4M st
fertilizers; petrochemicals



Russia – 1.8M st
steel; petrochemicals; fertilizers



United Kingdom – 1.3M st
crude



Economic Impact of the Port of South Louisiana

	REGIONAL	LOUISIANA
New Business Sales	\$ 14.4B	\$ 19.9B
Earnings	\$ 1.8B	\$ 4.4B
Employment	30,180 (6 in 10)	83,409 (1 in 25)
# Jobs at Globalplex = 315		
Tax Revenue	\$ 72.5M	\$ 310.5M
	Loren C. Scott & Associates, Inc., 2015	

Access to over

**26 Million
people**

in 31 U.S. States

Alabama	Nebraska
Arkansas	New Mexico
Colorado	New York
Georgia	N. Carolina
Idaho	N. Dakota
Illinois	Ohio
Indiana	Oklahoma
Iowa	Pennsylvania
Kansas	S. Dakota
Kentucky	Tennessee
Louisiana	Texas
Michigan	Virginia
Minnesota	W. Virginia
Mississippi	Wisconsin
Missouri	Wyoming
Montana	



INLAND RIVER SYSTEM

Port Benefits



INDUSTRIAL REVENUE BOND FINANCING

Taxable and tax-exempt bonds to assist new industrial facilities

FOREIGN TRADE ZONE (FTZ) #124

Operator of the most active trade zone in America



PROFESSIONAL LOCATION ASSISTANCE

Includes the use of in-house GIS

MARITIME SECURITY AND FIRE PROTECTION

Round-the-clock emergency response division





2,000 SqFt.;
Built to withstand
150 mile-per-hour
winds



Outfitted w/state-
of-the-art comm &
surveillance
equipment



Linked to federal,
state, & local
emergency
response agencies



Marine Security Operations Center (MSOC)

Command/control center for emergency management;
Linked to MSOCs of all MS River deep-water ports

Doing Business in Louisiana



**SILVER SHOVEL AWARD, JOB CREATION & BUSINESS INVESTMENT
IMPACT, *Area Development Magazine (2018)***

#1 | LED FASTSTART® WORKFORCE TRAINING PROGRAM
Business Facilities Magazine

#2 | INFRASTRUCTURE INVESTMENT SUPPORTING ECON. GROWTH
Site Selection Magazine



#2 | STRONGEST ECONOMIC DEVELOPMENT RESULTS IN THE SOUTH
Southern Business & Development Magazine

TOP 10 | BEST STATES FOR BUSINESS
Site Selection Magazine & Area Development Magazine

Economic Development

	<i>Parish</i>	<i>Capital Investment</i>	<i># Direct Jobs</i>	<i>Avg Salary</i>
Formosa TAIWAN <i>methanol</i>	St. James	\$ 9.4B	1,200	\$ 84.5K
Nucor Steel U.S.	St. James	\$ 3.4B	1,250	\$ 75K
South Louisiana Methanol NEW ZEALAND/SAUDI ARABIA	St. James	\$ 2.2B	75	\$ 71.4K

Economic Development

	Parish	Capital Investment	# Direct Jobs	Avg Salary
Yuhuang Chemical CHINA <i>methanol</i>	St. James	\$ 1.85B	400	\$ 85K
EuroChem RUSSIA <i>fertilizer</i>	St. John	\$ 1.5B	200	\$ 58K
Wanhua CHINA <i>mdi</i>	St. James	\$ 1.25B	170	\$ 80K

Economic Development (cont'd)

	Parish	Capital Investment	# Direct Jobs	Avg Salary
Diamond Green Diesel U.S. (expansion) <i>diesel/alkylate</i>	St. Charles	\$ 1.1B	54	\$130K
Monsanto (expansion) U.S.	St. Charles	\$ 975M	95	\$ 76K
Entergy Little Gypsy (expansion) U.S.	St. Charles	\$ 869M	27	

Economic Development (cont'd)

	Parish	Capital Investment	# Direct Jobs	Avg Salary
MPLX L.P. (former Pin Oak Terminals) <i>U.S. crude oil</i>	St. John	\$ 750M	80 - 100	\$ 63K
NuStar U.S. <i>crude oil storage</i>	St. James	\$ 365M	32	\$98K
Syngas Energy MALAYSIA <i>methanol</i>	St. James	\$ 360M	86	\$ 78K

Economic Development (cont'd)

	<i>Parish</i>	<i>Capital Investment</i>	<i># Direct Jobs</i>	<i>Avg Salary</i>
Linde U.S. <i>hydrogen</i>	St. James	\$ 250M	15	\$80K
Bunge (expansion) U.S. <i>grain</i>	St. Charles	\$ 140M		
Plains All American U.S. <i>crude oil storage</i>	St. James	\$ 50M		

.....

Economic Development (cont'd)

	<i>Parish</i>	<i>Capital Investment</i>	<i># Direct Jobs</i>	<i>Avg Salary</i>
Momentive Specialty Chemicals U.S.	St. Charles	\$ 38M	8	\$ 82K
Kongsberg Maritime NORWAY <i>office & training</i>	St. Charles	\$ 15M	200	\$ 100K
Denka Performance Elastomers HQ U.S.	St. John		16 corporate	\$ 80K

\$24.512 billion capital investment and, at least, 3,909 direct jobs

Container Terminal Project

Shipping Cost Comparison

ORIGIN: Shanghai

DESTINATION: Chicago

<u>PORT</u>	<u>APPR COST/TEU</u>	<u>RAIL LINE</u>
Port of South LA	\$ 688	Canadian National
Seattle	\$ 969	BNSF Railway
Charleston	\$ 1,400	CSX Transportation
Oakland	\$ 1,551	Union Pacific

Runway
5,100'x75'

Hangar
6,300 sq.ft.

FBO
Services



**Port of
South Louisiana**
TRANSPORTATION CENTER OF THE AMERICAS



**Port of
South Louisiana**
EXECUTIVE REGIONAL AIRPORT

Port of South LA Executive Regional Airport

Jet-A & AvGas Fuel

FAA AWOS

Video Surveillance

PSL Consultants

AUX INITIATIVES

General Robert Crear

ADAMS & REESE

Jeff Brooks

JAMES PURPERA GOVERNMENTAL CONSULTING

James Purpera

CAPITAL OUTLAY SPECIALIST

TJC GROUP

Tim Johnson

PUBLIC AFFAIRS/

COMMUNITY OUTREACH

GOVERNMENTAL RELATIONS

WORKFORCE DEVELOPMENT

TOP DRAWER/ FOCUS STRATEGIES

Mary Patricia Wray

Laura Veazey

MELTZ

COMMUNICATIONS

Gary Meltz

SABISTON

CONSULTANTS

Norma Jane Sabiston



Priority List

Emergency & National Security Projects



MS River Shipping Channel Dredging, South LA

The MS River ship channel depth is not sufficient to accommodate the deep-draft vessels now transiting the expanded Panama Canal, hurting competitiveness. Congress authorized a 50-foot channel depth in 1985 but the work has never been funded.

Authority: Port of South Louisiana/USACE



Cost:
\$1 Billion
Jobs:
200 Direct



Engineering &
Permitting:
in progress

Funding:
seeking Federal



Port of South Louisiana is ranked as the #1

LARGEST TONNAGE PORT *IN THE* ***WESTERN HEMISPHERE!***



**Port Of
South Louisiana**
TRANSPORTATION CENTER OF THE AMERICAS



Port of South Louisiana is ranked as the #1

GRAIN EXPORTER *IN THE UNITED STATES!*



Port of South Louisiana is ranked as the #1

FOREIGN TRADE ZONE IN THE U.S. FOR MERCHANDISE RCVD!



Port of South Louisiana is ranked as the #2

***ENERGY TRANSFER PORT* IN THE UNITED STATES!**



...IMPORTANT TO OUR COMMUNITY

...IMPORTANT TO OUR STATE

...IMPORTANT TO OUR COUNTRY

...*IMPORTANT TO THE WORLD!*



SUPPORT YOUR PORT!