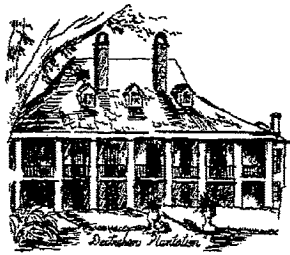


The Parish of St. Charles

December 6, 2021

IN RECOGNITION



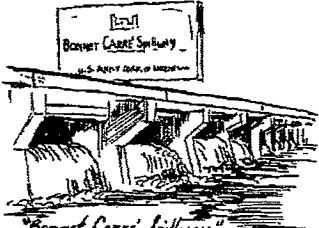
"Dutch Colonial House"

WHEREAS, the Home Builders Association of Greater New Orleans was founded in 1941 and has represented the residential construction and related industries for a seven-parish region; including Orleans, Jefferson, St. Bernard, Plaquemines, St. Charles, St. John the Baptist, and St. James; and,



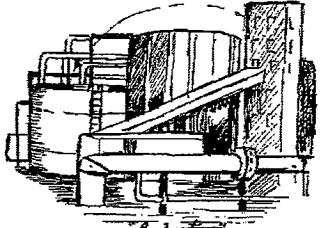
"Hunting and Fishing"

WHEREAS, Home Builders Association of Greater New Orleans members have built subdivisions and entire communities throughout this region; housing thousands of families safely and affordably; and,



"Bentley Career Spillway"

WHEREAS, Home Builders Association of Greater New Orleans professionals have set the region on a course for future decades of healthy housing construction and growth by educating members and the general public as to the best and most dynamic construction practices; and,



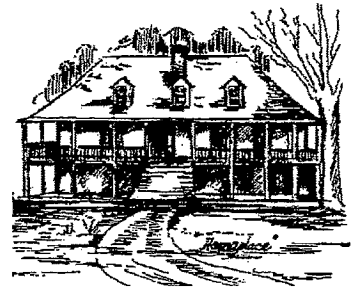
"Industry"

WHEREAS, the Home Builders Association of Greater New Orleans promotes ethical and professional standards for the industry which contributes to the betterment of countless neighborhoods and communities; and,

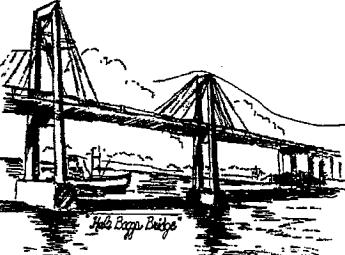


"The Little Red Church"

WHEREAS, the Home Builders Association of Greater New Orleans carries out their vision of serving as a responsible citizen through active community involvement by hosting events such as the Home and Garden Show, Parade of Homes as well as other events, programs and public policy initiatives.

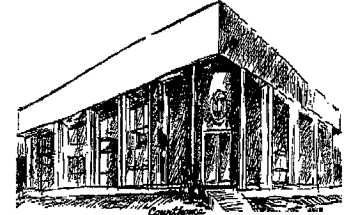


"Parade"



"John Edgar Bridge"

NOW, THEREFORE, BE IT RESOLVED, THAT WE, THE MEMBERS OF THE ST. CHARLES PARISH COUNCIL AND THE PARISH PRESIDENT, do hereby recognize



HOME BUILDERS ASSOCIATION OF GREATER NEW ORLEANS ON THE OCCASION OF ITS 80TH ANNIVERSARY

*"PARISH OF PLENTY"
created in 1807 from the county of the
"German Coast", a parish of
unprecedented economic and social
development, known for its
hospitality, rural living and sporting
opportunities... with the added
distinction of being located
on both sides of the
Mighty Mississippi River.*

Matthew Jewell

**MATTHEW JEWELL
PARISH PRESIDENT**

Dick Gibbs

**DICK GIBBS
COUNCILMAN, DISTRICT III**

Beth A. Billings

**BETH A. BILLINGS
COUNCILWOMAN AT LARGE, DIV. A**

Nicky DuFrene

**NICKY DUFRENE
COUNCILMAN, DISTRICT IV**

Holly Fonseca

**HOLLY FONSECA
COUNCILWOMAN AT LARGE, DIV. B**

Marilyn B. Bellock

**MARILYN B. BELLOCK
COUNCILWOMAN, DISTRICT V**

La Sandra Darenbourg Gordon

**LA SANDRA DARENSBOURG GORDON
COUNCILWOMAN, DISTRICT I**

Bob Fisher

**BOB FISHER
COUNCILMAN, DISTRICT VI**

Mary K. Clulee

**MARY K. CLULEE
COUNCILWOMAN, DISTRICT II**

Julia Fisher-Perrier

**JULIA FISHER-PERRIER
COUNCILWOMAN, DISTRICT VII**