

EXHIBIT D



128 Northpark Blvd. ♦ Covington, Louisiana 70433 ♦ Phone: 985.624.5001 ♦ Fax: 985.624.5303

March 28, 2024

St. Charles Parish Government
15045 River Rd
Hahnville, Louisiana 70057
Attn: Mr. Sam Scholle

EMAIL ONLY

RE: Montz Pump Station #2 Drainage Improvements
Culvert Loading Memorandum

Dear Sam,

As designed, the new 36" RCP is structurally adequate for the tracked vehicle weights stated by Entergy. No less than 2 ft of cover must be maintained over the pipe. During equipment movement, continuous matting from across the berm and pipe is required to prevent displacement of the berm and pipe cover. See attached plan/profile drawing, and background information below.

Under the request of Entergy and St. Charles Parish, load calculations and recommendations for a side drain pipe located within a new proposed drainage canal have been performed. A 36" Reinforced Concrete Pipe has been recommended and used to calculate the loads provided by Entergy on the pipe. The below loads were provided by Entergy for equipment that is to be used in the area.

| | | |
|-----------------------|-------------|------------|
| Flextrack 105' bucket | 59,860 Ibs | 10'2" Wide |
| Flextrack Crane | 80,000 Ibs | 136" Wide |
| 45T Mantis Crane | 93'904 Ibs | 18'4" Wide |
| 77T Mantis Crane | 137,554 Ibs | 18'8" Wide |

Calculations were performed on each load case and the following recommendations were made. A minimum of 2 feet of cover shall be placed above the pipe. Class V concrete shall be used for the Reinforced Concrete Pipe to ensure maximum strength in concrete. All movement with heavy equipment across the pipe shall have timber mats placed on top until the entire machine has been moved from the pipe. Below are the approximations of the loads that will be placed on the pipe with a minimum of 2 feet of fill.

- Flextrack 105' bucket 59,860 Ibs 10'2" Wide - Approximately 950 lbs/ft
- Flextrack Crane 80,000 Ibs 136" Wide - Approximately 1150 lbs/ft

PRINCIPAL Infrastructure®

Architecture ♦ Engineering ♦ Construction

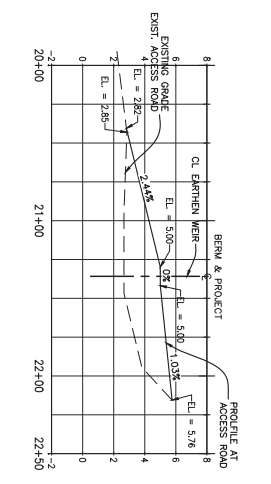
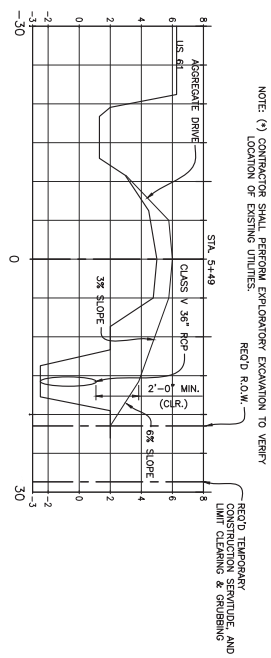
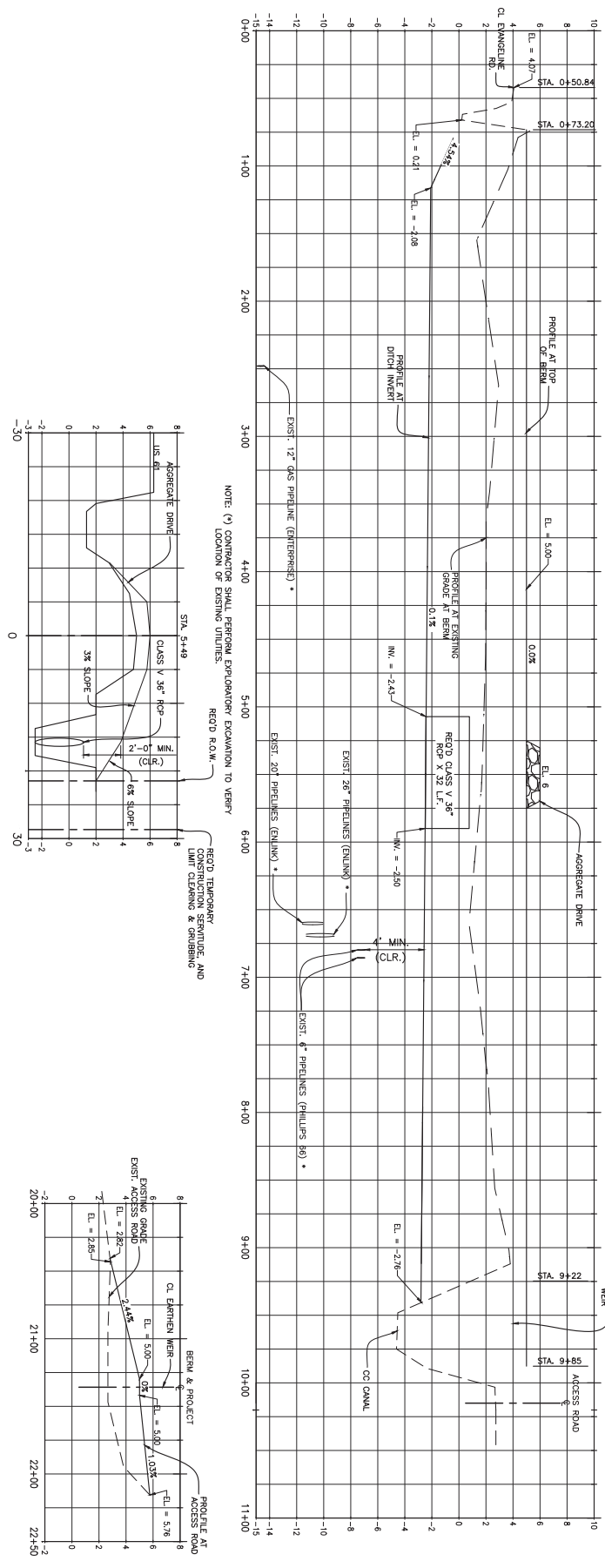
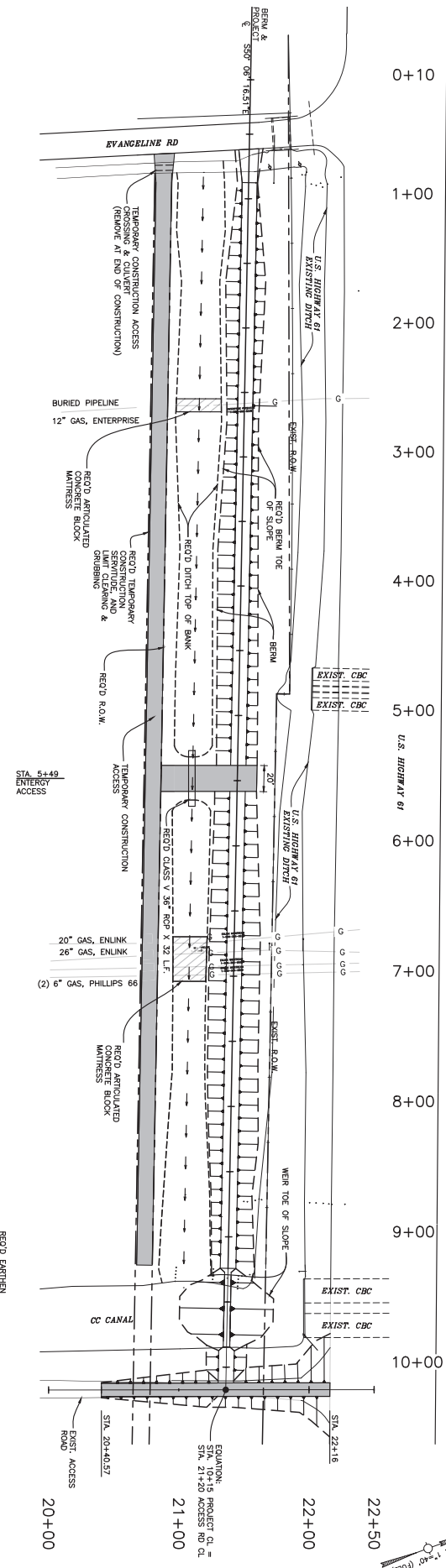
www.pi-aec.com ♦ info@pi-aec.com

- 45T Mantis Crane 93'904 lbs 18'4" Wide - Approximately 1000 lbs/ft
(extended); 1075 lbs/ft (retracted)
- 77T Mantis Crane 137,554 lbs 18'8" Wide - Approximately 1350 lbs/ft
(extended); 1450 lbs/ft (retracted)

Sincerely,
PRINCIPAL Engineering, Inc.



John Rayer, P.E.
Project Engineer



NOTE: (*) CONTRACTOR SHALL PERFORM EXPLORATORY EXAMINATION TO VERIFY LOCATION OF EXISTING UTILITIES.

| | | | | | | | | |
|-----------------------|--|---|---|--|--|---|---|---|
| <p>3 OF 6</p> | <p>MONTZ PUMP STATION #2 DRAINAGE PLAN NEW AIRLINE HWY BERM</p> | <p>SCALE: (24x36) H: 1" = 10' V: 1" = 10'</p> | <p>DESIGNED BY: DRAWN BY: CLR CHECKED BY: ACM</p> | | <p>DATE: JUNE 2023 JOB NO. 2010A</p> | <p>PRINCIPAL Engineering, Inc. 1011 N. CAUSEWAY BLVD., SUITE 19 MANVILLE, LA. 70471 PH: (985) 624-5001 INFO@PE-ACC.COM WWW.PE-ACC.COM</p> | <p>PRELIMINARY DRAWING NOT FOR CONSTRUCTION, BIDDING, RECORDATION, CONVEYANCE, SALES, OR ISSUANCE OF A PERMIT</p> <p>March 20, 2024</p> | <p>CONTRACT NUMBER: 2010A SHEET NUMBER: 8</p> |
|-----------------------|--|---|---|--|--|---|---|---|