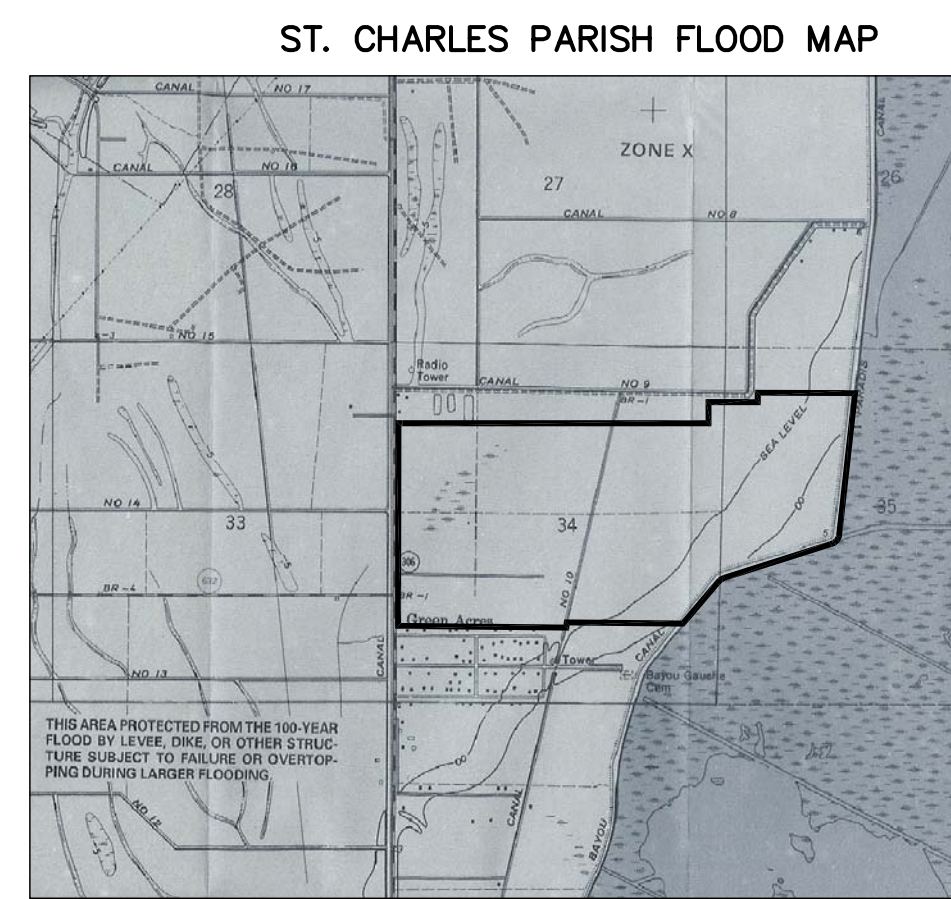


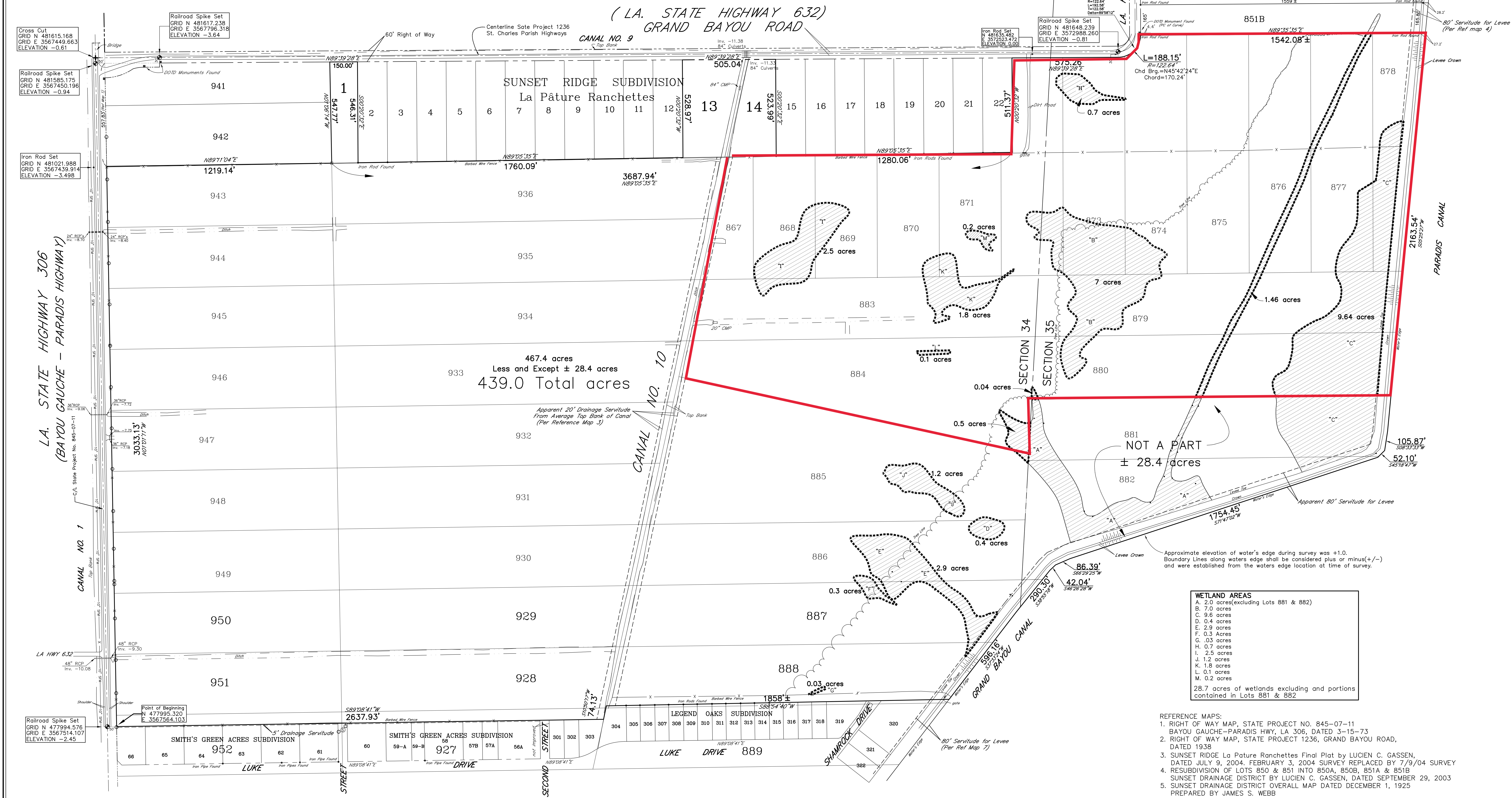
VICINITY MAP  
not to scale



LEGEND

- WOOD POLE
- BARBED WIRE FENCE
- ▨ WETLAND DELINEATION AS MARKED BY BAYOU CAJUN, (REF. MAP 6)
- DITCH or CANAL
- SPOT ELEVATION (NAVD 88)

LA HIGHWAY 306

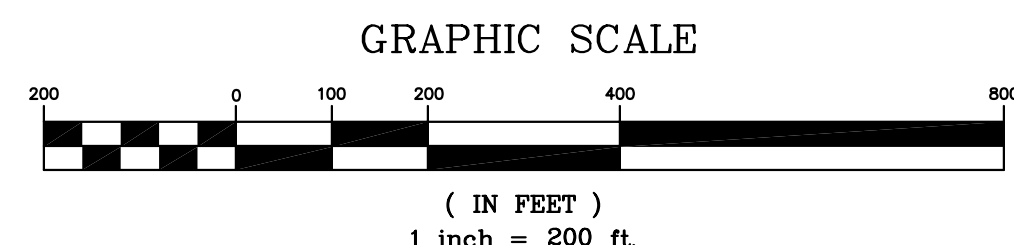


**WETLAND AREAS**

A.	2.0 acres (including Lots 881 & 882)
B.	7.0 acres
C.	9.6 acres
D.	0.4 acres
E.	2.9 acres
F.	0.3 acres
G.	0.03 acres
H.	0.7 acres
I.	2.5 acres
J.	1.2 acres
K.	1.8 acres
L.	0.1 acres
M.	0.2 acres

28.7 acres of wetlands excluding and portions contained in Lots 881 & 882

- REFERENCE MAPS:
- RIGHT OF WAY MAP, STATE PROJECT NO. 845-07-11 BAYOU GAUCHE-PARADIS HWY, LA 306, DATED 3-15-73
  - RIGHT OF WAY MAP, STATE PROJECT 1236, GRAND BAYOU ROAD, DATED 1938
  - SUNSET RIDGE La Pature Ranchettes Final Plat by LUCIEN C. GASSEN, DATED JULY 9, 2004; FEBRUARY 3, 2004 SURVEY REPLACED BY 7/9/04 SURVEY
  - RESUBDIVISION OF LOTS 850 & 851 INTO 850A, 850B, 851A & 851B SUNSET DRAINAGE DISTRICT BY LUCIEN C. GASSEN, DATED SEPTEMBER 29, 2003
  - SUNSET DRAINAGE DISTRICT OVERALL MAP DATED DECEMBER 1, 1925
  - PREPARED BY JAMES S. WEBB
  - WETLAND DELINEATION MAP PREPARED BY BAYOU CAJUN ENVIRONMENTAL NOT DATED. CONTACT: ARVILLE TOUCHET 337-643-1644
  - LEGEND OAKS SUBDIVISION BY DUFRENE SURVEYING, DATED AUGUST 4, 2003
  - SMITH'S GREEN ACRES SUBDIVISION PLAT AS COPIED FROM THE COURTHOUSE NOT DATED.



Dimensions shown hereon are adjusted from grid to ground distances using the scale factor of 0.9999305

Coordinates and bearings refer to Louisiana Grid South Zone NAD 83. To convert grid distances between coordinates to ground distances, multiply by 1.0000693

Wetland Delineation as shown are plotted from actual field locations of "pin flags" as set by Bayou Cajun Environmental

CONTOURS SHOWN ARE FOR THE GENERAL ELEVATIONS OF THE GROUND. SPOT ELEVATIONS WILL HOLD FOR ANY DISCREPANCIES.

SUNSET DRAINAGE DISTRICT LOT LINES ARE FOR GRAPHIC PURPOSE ONLY, AND WERE NOT INDIVIDUALLY SURVEYED FOR THIS SURVEY

NOTE: The Location of Underlaid and Other Not Public Utilities shown hereon was obtained from data and/or information provided by the utility companies. The utility companies are shown as they appear on their records. The utility companies are not responsible for the accuracy of the information shown hereon. The utility companies are not responsible for the accuracy of the information shown hereon.

NO.	DATE	DESCRIPTION	BY
1	7/31/06	added wetland acreage	SMR

GENERAL NOTES:

BEARINGS AND COORDINATES REFER TO LA GRID SOUTH ZONE NAD 83 BASED UPON GPS OBSERVATIONS

ALL ELEVATIONS REFER TO NAVD 88

BASED ON GPS OBSERVATIONS AND GPS MONUMENT IT 53 F. ELEV. 107

**LANDMARK SURVEYING, INC.**  
1400 DeLaune Avenue, Suite A  
Harahan, Louisiana 70123

For: 504-734-8557      Phone: 504-733-3303

There is no representation that all applicable servitudes and/or restrictions have been shown hereon. Any servitudes and/or restrictions shown on this plat are limited to those set forth in the description and/or information furnished the undersigned. A title or public record search for such information will not be made by the undersigned in compiling the data for this survey.

I certify that this plat represents an actual ground survey made by me, or by those under my direction, that no visible encroachments exist either way across the property lines except as shown hereon and that this survey and plat are in accordance with the adopted Louisiana Minimum Standards for Property Boundary Survey for a Class C Survey.

PROFESSIONAL LAND SURVEYOR

**SURVEY OF A PORTION OF THE SUNSET DRAINAGE DISTRICT SECTIONS 34 & 35 T 14 S ~ R 20 E ST. CHARLES PARISH LOUISIANA**

JOB NO. 06-0152    DATE: May 2, 2006    DRAWING No. EE 3752

Survey made at the Request of:  
**CECIL SUMNER**

Ref Benchmark: TT 13 F, NAVD 88 Elevation 1.87  
Location: GRID N: 502936.875  
GRID E: 3564967.198  
LAT: N29°52'47.72"  
LONG: W90°26'12.32"