

**2026-0123**

**INTRODUCED BY: MATTHEW JEWELL, PARISH PRESIDENT**

**RESOLUTION NO. 6903**

A resolution to approve and authorize modifications to the Act of Conservation Servitude for Public Use and Benefit as granted by Willowridge Estates, L.L.C. and Rathborne Land Company, Inc. to St. Charles Parish dated December 28, 1999 and to modify the Consent Decree between the United States of America and Willowridge Estates, L.L.C. and Rathborne Land Company, Inc. in the matter entitled "United States of America vs. Willowridge Estates, LLC and Rathborne Land Company, Inc."

**WHEREAS,** Entergy Louisiana, L.L.C. is in need of constructing a transmission line to traverse the Conservation Servitude, and St. Charles Parish is in support of this transmission line project, which serves the public convenience and necessity and is in the public interest; and,

**WHEREAS,** the Act of Conservation Servitude for Public Use and Benefit as granted by Willowridge Estates, L.L.C. and Rathborne Land Company, Inc. to St. Charles Parish dated December 28, 1999, approved by the St. Charles Parish Council by Resolution No. 4739 adopted on December 20, 1999, and amended by Ordinance No. 11-7-5 adopted on July 11, 2011, needs modification to allow for the construction of a transmission line to traverse the Conservation Servitude as shown on the attached aerial picture and property description, more or less, attached hereto; and,

**WHEREAS,** the Consent Decree entered into by United States of America and Willowridge Estates, L.L.C. and Rathborne Land Company, Inc. dated February 11, 2000, and amended on August 2, 2013, needs modification to reflect the necessary changes to allow for the construction of a transmission line to traverse the Conservation Servitude as referenced above.

**NOW, THEREFORE BE IT RESOLVED, THAT WE, THE MEMBERS OF THE ST. CHARLES PARISH COUNCIL** do hereby approve and authorize the modification of the Act of Conservation Servitude for Public Use and Benefit as granted by Willowridge Estates, L.L.C. and Rathborne Land Company, Inc. to St. Charles Parish dated December 28, 1999, and to modify the Consent Decree dated February 11, 2000, and amended on August 2, 2013, between "United States of America vs. Willowridge Estates, LLC and Rathborne Land Company, Inc." in order to allow for the construction of a transmission line to traverse the Conservation Servitude as depicted in the attached aerial picture and property description, more or less, attached hereto.

**BE IT FURTHER RESOLVED,** that the St. Charles Parish Council hereby authorize the filing of the necessary documents in the federal lawsuit entitled "United States of America vs. Willowridge Estates, LLC and Rathborne Land Company, Inc." Civil Action No. 99-3489, to modify the Consent Decree between the United States of America and Willowridge Estates, L.L.C. and Rathborne Land Company, Inc. to allow for the construction of a transmission line to traverse the Conservation Servitude as referenced above.

**BE IT FURTHER RESOLVED,** that the Parish President is hereby authorized to execute any and all documents necessary to carry out the modification of said Consent Decree and Conservation Servitude.

The foregoing resolution having been submitted to a vote, the vote thereon was as follows:

YEAS: MOBLEY, FONSECA, WILSON, SKIBA, PILIE, COMARDELLE, O'DANIELS, FISHER  
NAYS: NONE  
ABSENT: DEBRULER

And the resolution was declared adopted this 6th day of April, 2026, to become effective five (5) days after publication in the Official Journal.

CHAIRMAN: \_\_\_\_\_  
SECRETARY: Michelle Dupont  
DLVD/PARISH PRESIDENT: April 7, 2026  
APPROVED: \_\_\_\_\_ DISAPPROVED: \_\_\_\_\_

PARISH PRESIDENT: Matthew Jewell  
RETD/SECRETARY: April 7, 2026  
AT: 1:46 pm RECD BY: \_\_\_\_\_

**LEGAL DESCRIPTION OF WHERE  
TRANSMISSION LINE TRAVERSES CONSERVATION SERVITUDE**

LA STC 053 West Jefferson Levee District 7.735/acre ROW

LA STC 054 Rathborne Land Company, L.L.C. 11.857/acre ROW

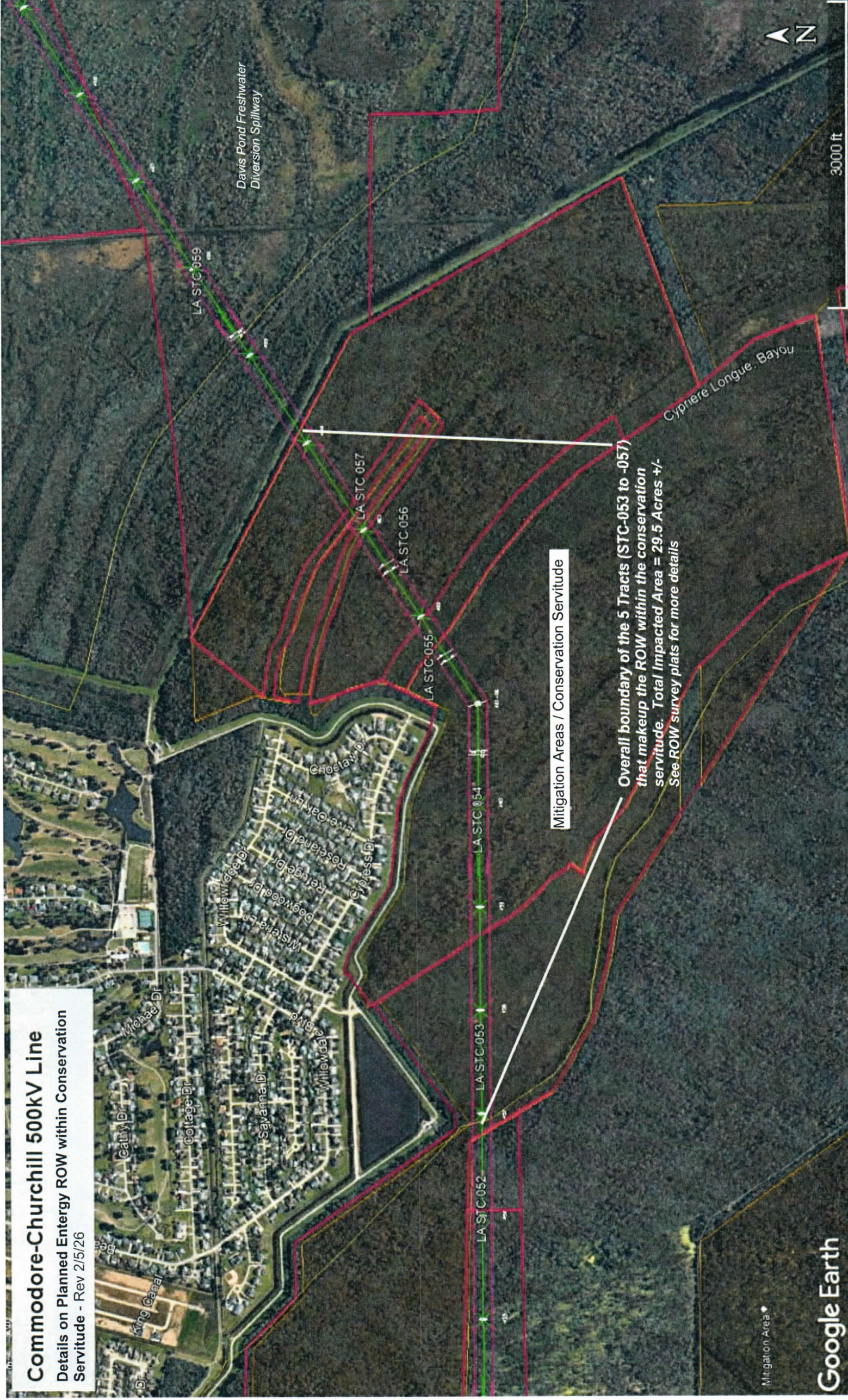
LA STC 055 Willowridge Estates, L.L.C. 1.09/acre ROW

LA STC 056 West Jefferson Levee District 7.605/acre ROW

LA STC 057 Willowridge Estates, L.L.C. 1.144/acre ROW

# Commodore-Churchill 500kV Line

Details on Planned Entergy ROW within Conservation Servitude - Rev 2/5/26



LA STC 059

Davis Pond Freshwater  
Diversion Spillway

3000 ft



Cypriere Longue Bayou

LA STC 057

LA STC 056

LA STC 055

LA STC 054

LA STC 053

LA STC 052

Mitigation Areas / Conservation Servitude

Overall boundary of the 5 Tracts (STC-053 to -057) that makeup the ROW within the conservation servitude. Total Impacted Area = 29.5 Acres +/- See ROW survey plats for more details

Mitigation Area