

Ord.

2014-0314

**INTRODUCED BY: V.J. ST. PIERRE, JR., PARISH PRESIDENT
(DEPARTMENT OF PLANNING AND ZONING)**

ORDINANCE NO. 14-10-4

An ordinance to approve a resubdivision of Lot 20 of Pecan Grove Subdivision into Lots 20A & 20B, located at Section 6, T13S R8E, St. Rose, St. Charles Parish, LA, with a waiver on the hard surface for Lot 20B.

WHEREAS, at their September 4, 2014 meeting, the Planning Commission approved PZS-2014-40, a resubdivision of Lot 20 of Pecan Grove Subdivision into Lots 20A & 20B, located at Section 6, T13S R8E, St. Rose, St. Charles Parish, LA; and,

WHEREAS, the Planning & Zoning Commission approved a positive recommendation of a waiver to the required minimum hard surface frontage width on a developed public street for Lot 20B; and,

WHEREAS, the St. Charles Parish Subdivision Ordinance of 1981 (as amended) stipulates that consideration of a minor resubdivision by the Planning and Zoning Commission requires approval by the Parish Council.

THE ST. CHARLES PARISH COUNCIL HEREBY ORDAINS:

SECTION I. That the positive recommendation of a resubdivision of Lot 20 of Pecan Grove Subdivision into Lots 20A & 20B, located at Section 6, T13S R8E, St. Rose, St. Charles Parish, LA, with a waiver on the hard surface for Lot 20B is hereby approved.

SECTION II. That the Parish President is hereby authorized to execute the attached surveys by Landmark Surveying, Inc., dated July 23, 2014.

The foregoing ordinance having been submitted to a vote, the vote thereon was as follows:

YEAS: SCHEXNAYDRE, LEWIS, WILSON, BENEDETTO, HOGAN, COCHRAN, FISHER-PERRIER

NAYS: NONE

ABSENT: WOODRUFF, FLETCHER

And the ordinance was declared adopted this 6th day of October 2014, to become effective five (5) days after publication in the Official Journal.

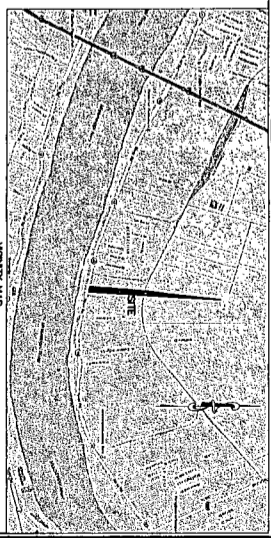
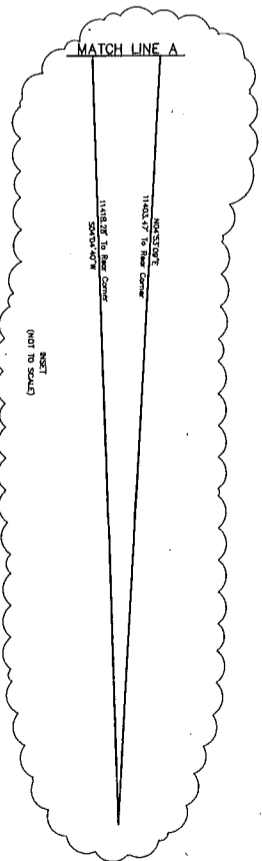
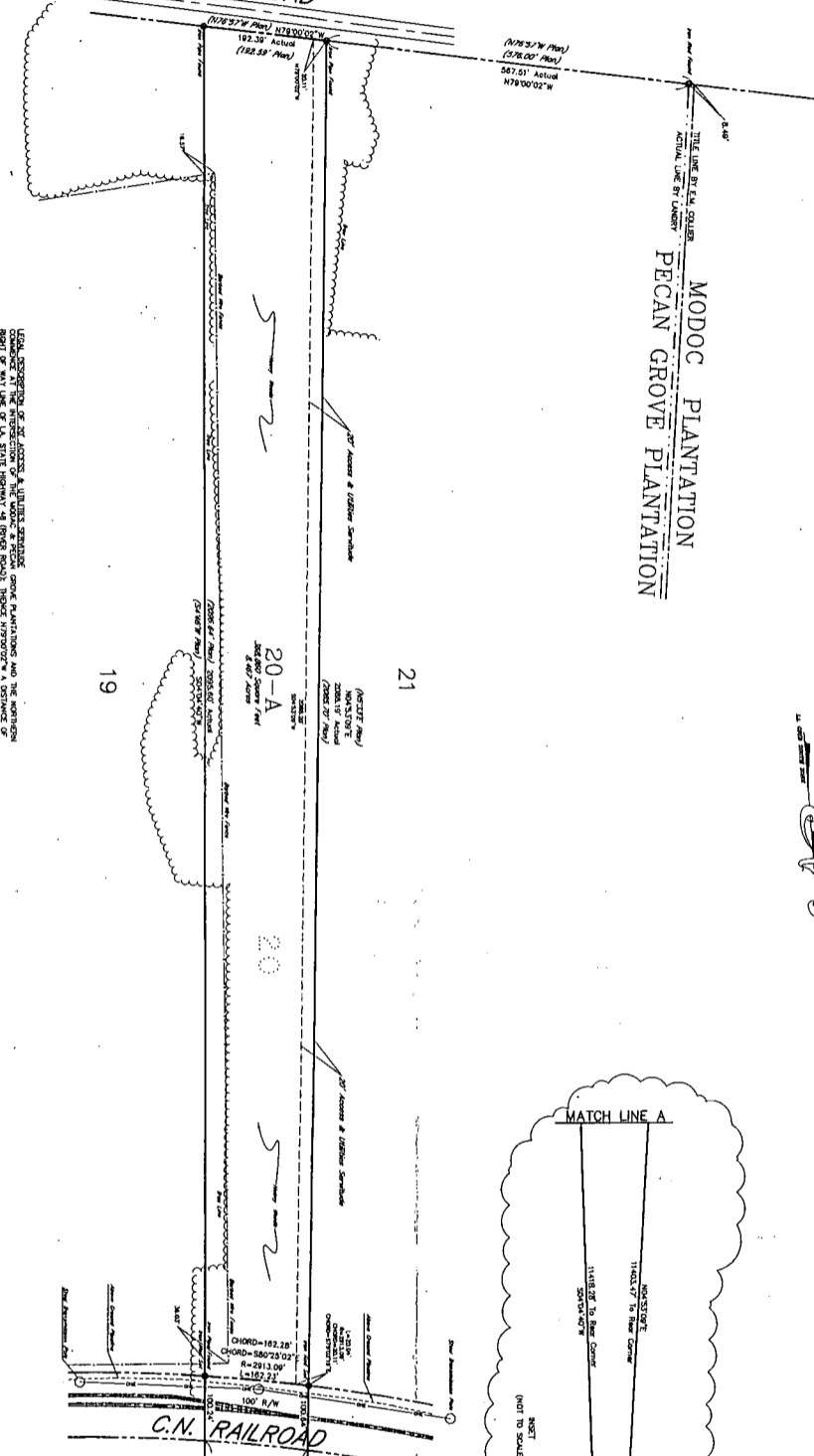
CHAIRMAN: [Signature]
 SECRETARY: [Signature]
 DLVD/PARISH PRESIDENT: 10-8-14
 APPROVED: DISAPPROVED:
 PARISH PRESIDENT: [Signature]
 RETD/SECRETARY: 10-8-14
 AT: 2:00pm RECD BY: [Signature]

RECORDED IN THE ST. CHARLES PARISH
 CLERK OF COURT OFFICE
 ON October 9, 2014
 AS ENTRY NO. 400926
 IN MORTGAGE/CONVEYANCE BOOK
 NO. 808 FOLIO 218

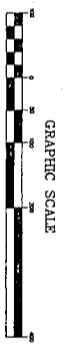
MISSISSIPPI RIVER
— FLOW —

(LA. STATE HIGHWAY 48)
RIVER ROAD

MODOC PLANTATION
PECAN GROVE PLANTATION



LEGAL DESCRIPTION OF AN ACCESS & UTILITIES EASEMENT
CONNECTED AT THE INTERSECTION OF THE MODOC PLANTATION AND THE PECAN GROVE PLANTATION TO THE LOT 20-B AND 20-A...
SECTION 6, T 13 S ~ R 8 E
PARISH OF ST. CHARLES, LOUISIANA



NOTE:
SURVEY MADE AT THE REQUEST OF:
DNA REAL ESTATE, LLC

NO.	DATE	DESCRIPTION	BY

GENERAL NOTES:
1. RECORD AND CORRECTED COPY TO LA. COMMISSION ON LAND SURVEYING...
2. SURVEY BY E.L. COLLIER DATED 12/27/1994...
3. SURVEY BY E.L. COLLIER DATED 8/22/1990...
4. SURVEY BY E.L. COLLIER DATED 5/19/2000

LANDMARK SURVEYING, INC.
1101 ROBERT STREET
HARRISBURG, MISSISSIPPI 39023
Phone: 601-771-1331
Fax: 601-771-1332

There is no representation that all conditions mentioned and/or indicated herein have been fully investigated and verified by the surveyor and/or his assistants. The surveyor is not responsible for any errors or omissions in this survey or for any conditions that may exist on the property being surveyed. The surveyor's liability is limited to the amount of the fee paid for the survey.



APPROVALS

DATE: 9/13/14

BY: [Signature]

BY: [Signature]

BY: [Signature]

BY: [Signature]

BY: [Signature]

BY: [Signature]

RECORDED IN THE CLERK OF COURT'S OFFICE, ST. CHARLES PARISH, ON THE 5th DAY OF October 2014 IN CONFORMANCE WITH LA. R.S. 9:1214

BOOK 388 PAGE 218 ENTRY NO. 1005322

RESUBDIVISION OF LOT 20 INTO
LOTS 20-A & 20-B
PECAN GROVE SUBDIVISION
SECTION 6, T 13 S ~ R 8 E
ST. CHARLES PARISH, LOUISIANA
BOOK 14-0380 DATE JULY 23, 2014 DRAWING NO. 140380