



Economic Development & Tourism Department

PREPARED BY
Patrick Beard, Director

PREPARED FOR

St. Charles Parish Council



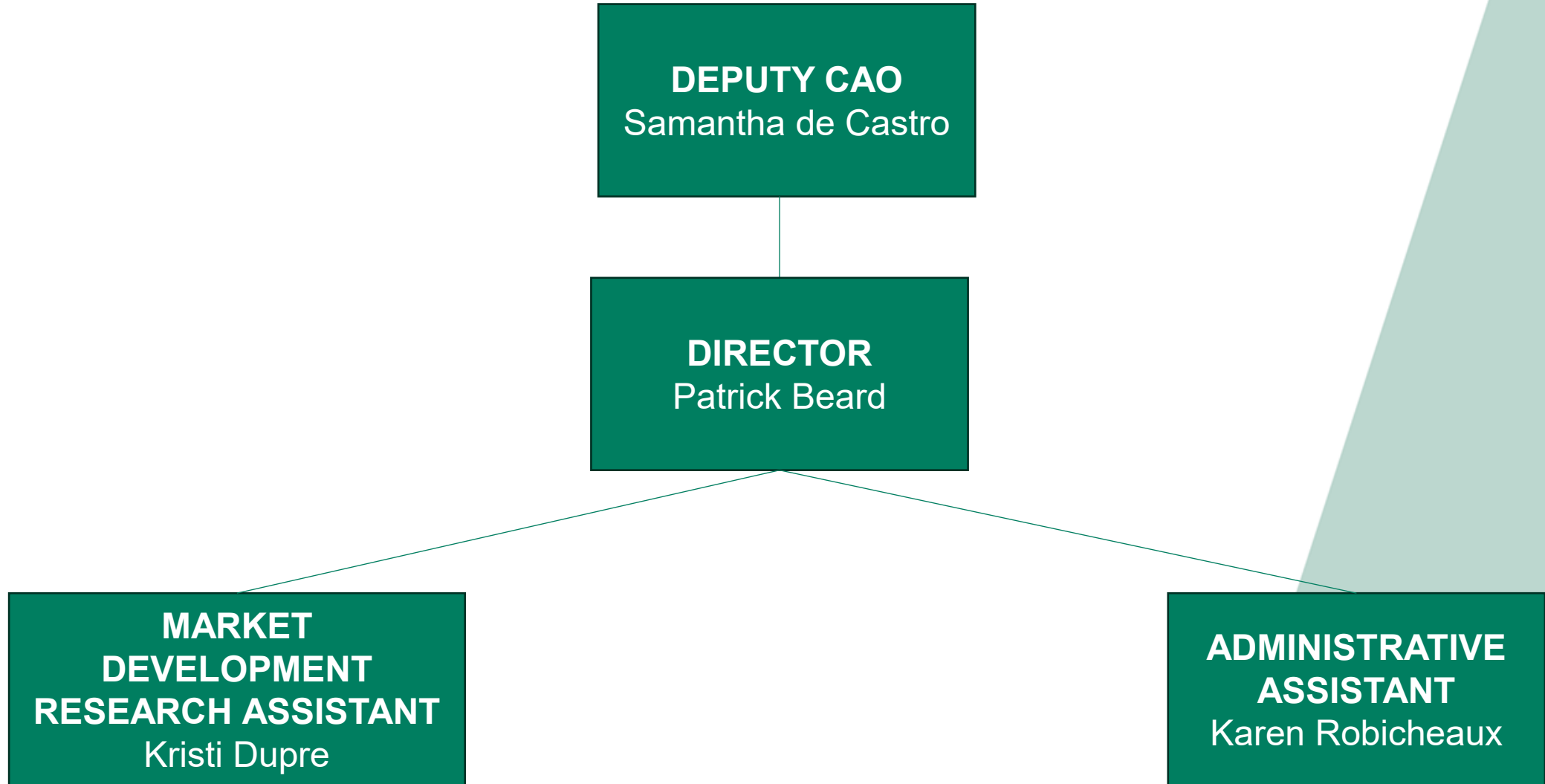
12.01.2025



Departmental Report

- Department Overview
- St. Charles Parish Economy
- 2026 Plans

2025 DEPARTMENT CHART



WHAT IS ECONOMIC DEVELOPMENT?

Improvement of the community's quality of life by creating jobs and providing a stable tax base.

ECONOMIC DEVELOPMENT PURPOSE

Ultimately, economic development is a **revenue strategy** for the community.

Generating additional tax dollars and jobs from new business investment.

ECONOMIC DEVELOPMENT FUNCTIONS

Business Retention – Keep businesses operating

Business Expansion – Grow business investments

Business Attraction – Attract businesses to SCP

ECONOMIC DEVELOPMENT FUNCTIONS

Workforce Partnerships: Help prepare residents for available careers, connect businesses to skilled workers, and build the pipeline of future workers

Entrepreneurs: Help small businesses access the resources they need to succeed



St. Charles Parish Economy

Economic Driver — Top 10-Sized Economy

Rank	Parish	2024 GDP (Billions)	Pop. Rank (2025 Est.)
1	East Baton Rouge	\$44,907,378,361	1
2	Orleans	\$31,004,914,047	3
3	Jefferson	\$29,419,501,191	2
4	Calcasieu	\$20,110,428,123	7
5	Lafayette	\$19,976,528,675	5
6	St. Tammany	\$16,575,083,810	4
7	Caddo Parish	\$16,570,261,660	6
8	St. Charles	\$11,100,566,754	21
9	Ascension	\$10,927,393,262	11
10	Ouachita	\$8,708,364,257	8



Demographic Overview



52,500

Approximate 2025 Population



\$106,500

Average HH Income



\$97,000

Avg. Wages per Employee



25,300

Labor Force

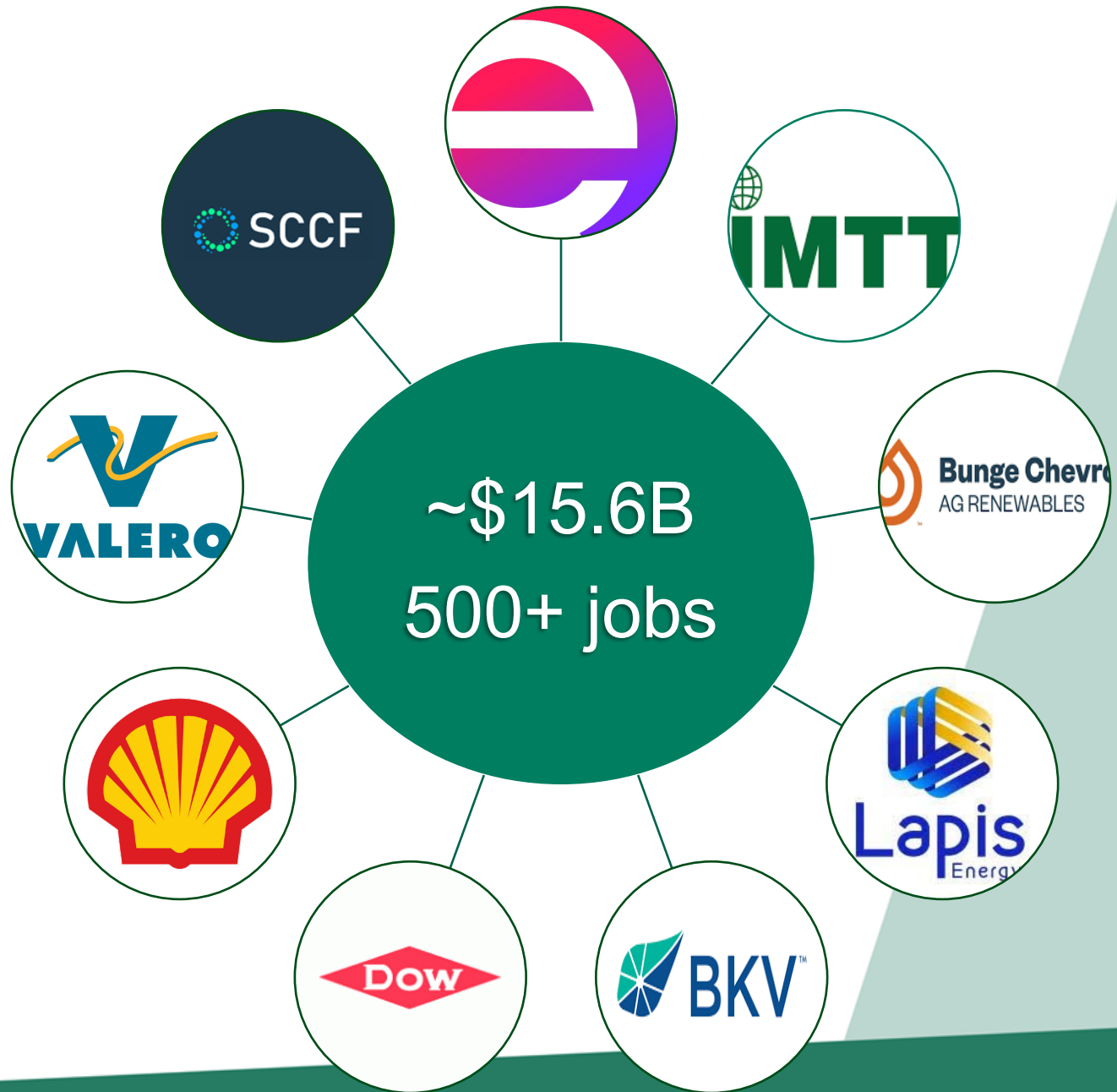
*Values are rounded to nearest hundred



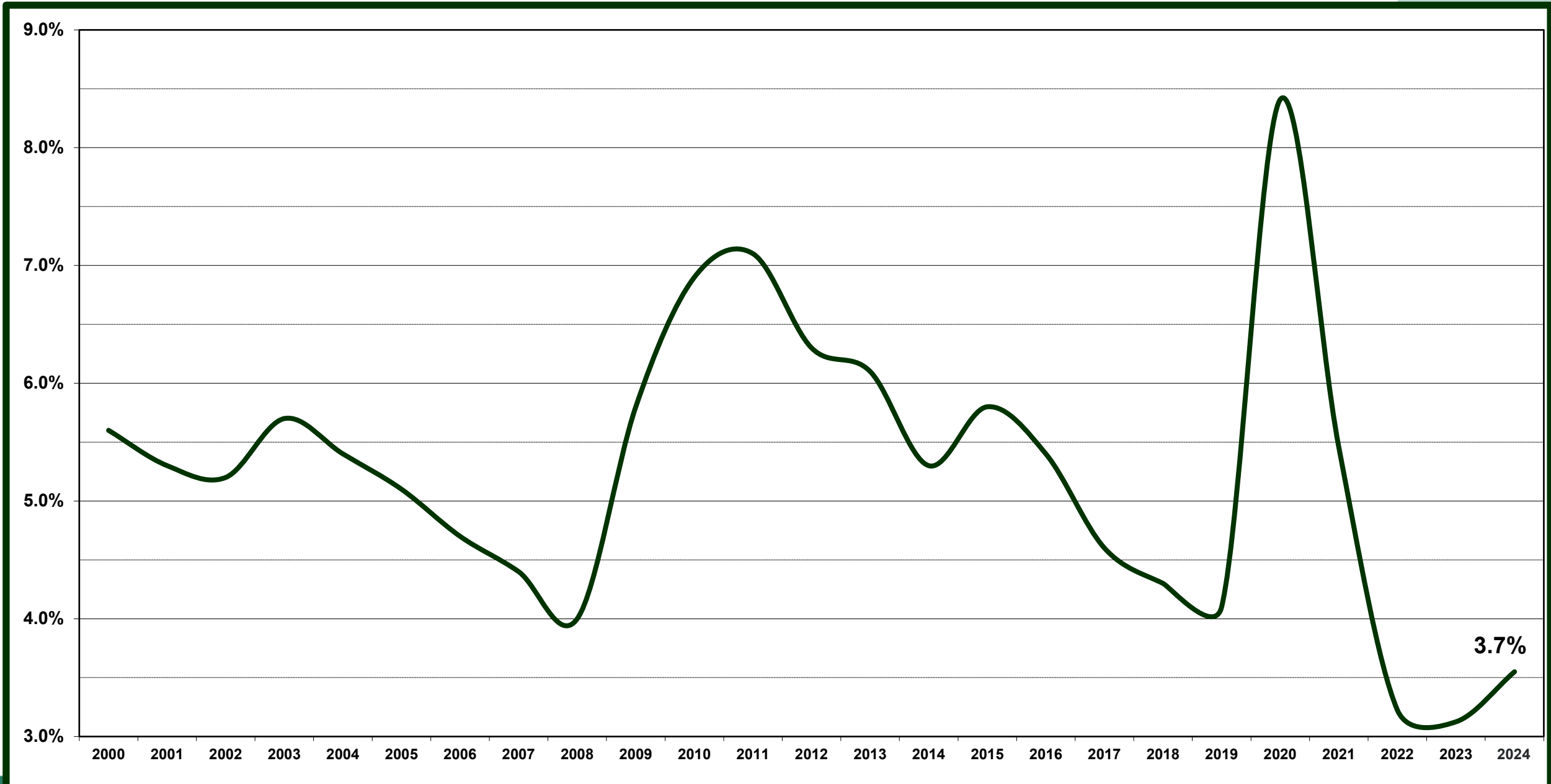
Industrial Partners & Top Employers



DIVERSE PROJECT MIX



LABOR MARKET – UNEMPLOYMENT RATE



Louisiana Unemployment Rates (Not Seasonally Adjusted)

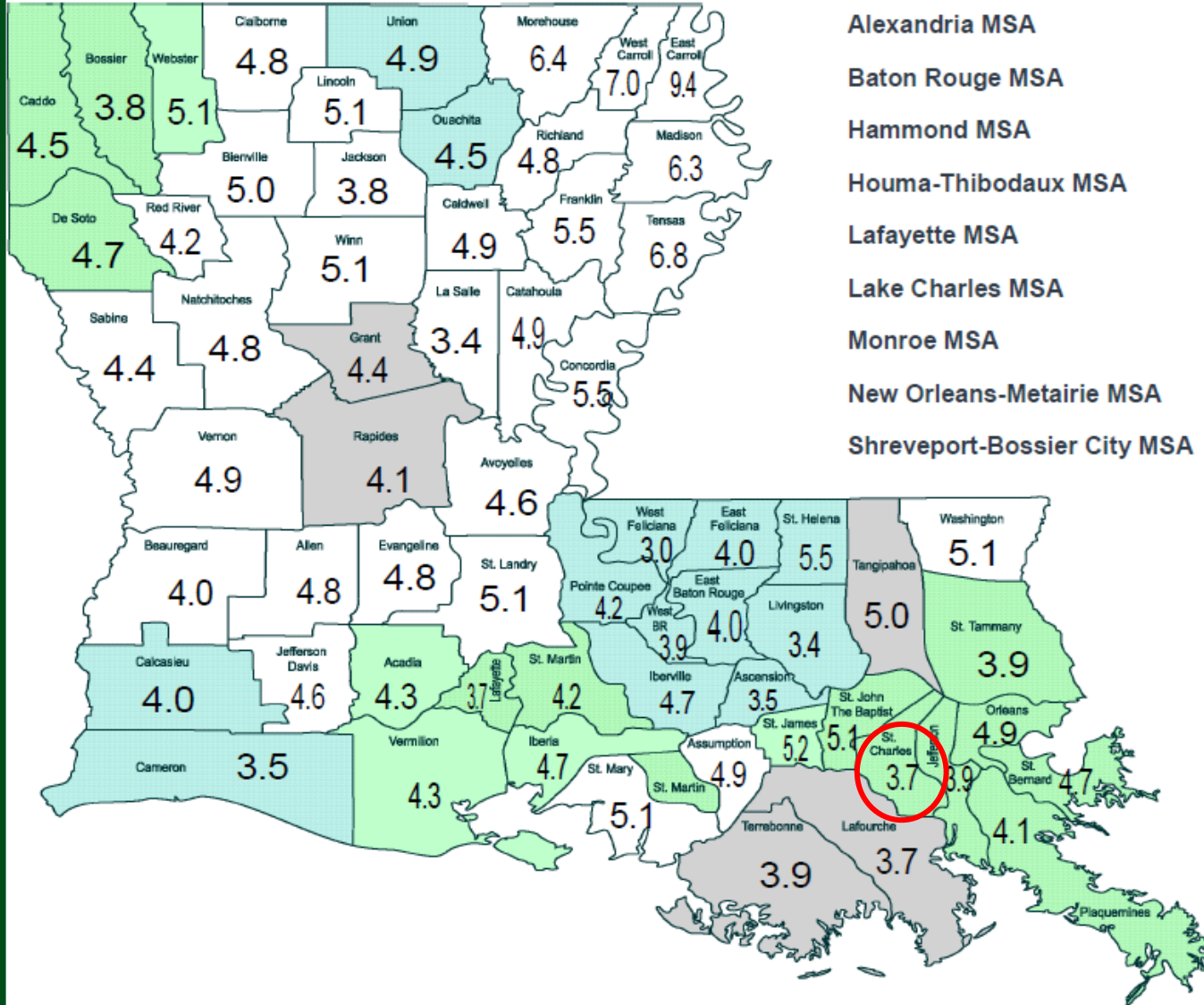
August 2024

Geographic Area	Unemployment Rate (%)
Statewide	4.3 %
Alexandria MSA	4.1 %
Baton Rouge MSA	3.8 %
Hammond MSA	5.0 %
Houma-Thibodaux MSA	3.8 %
Lafayette MSA	4.0 %
Lake Charles MSA	3.9 %
Monroe MSA	4.6 %
New Orleans-Metairie MSA	4.3 %
Shreveport-Bossier City MSA	4.4 %

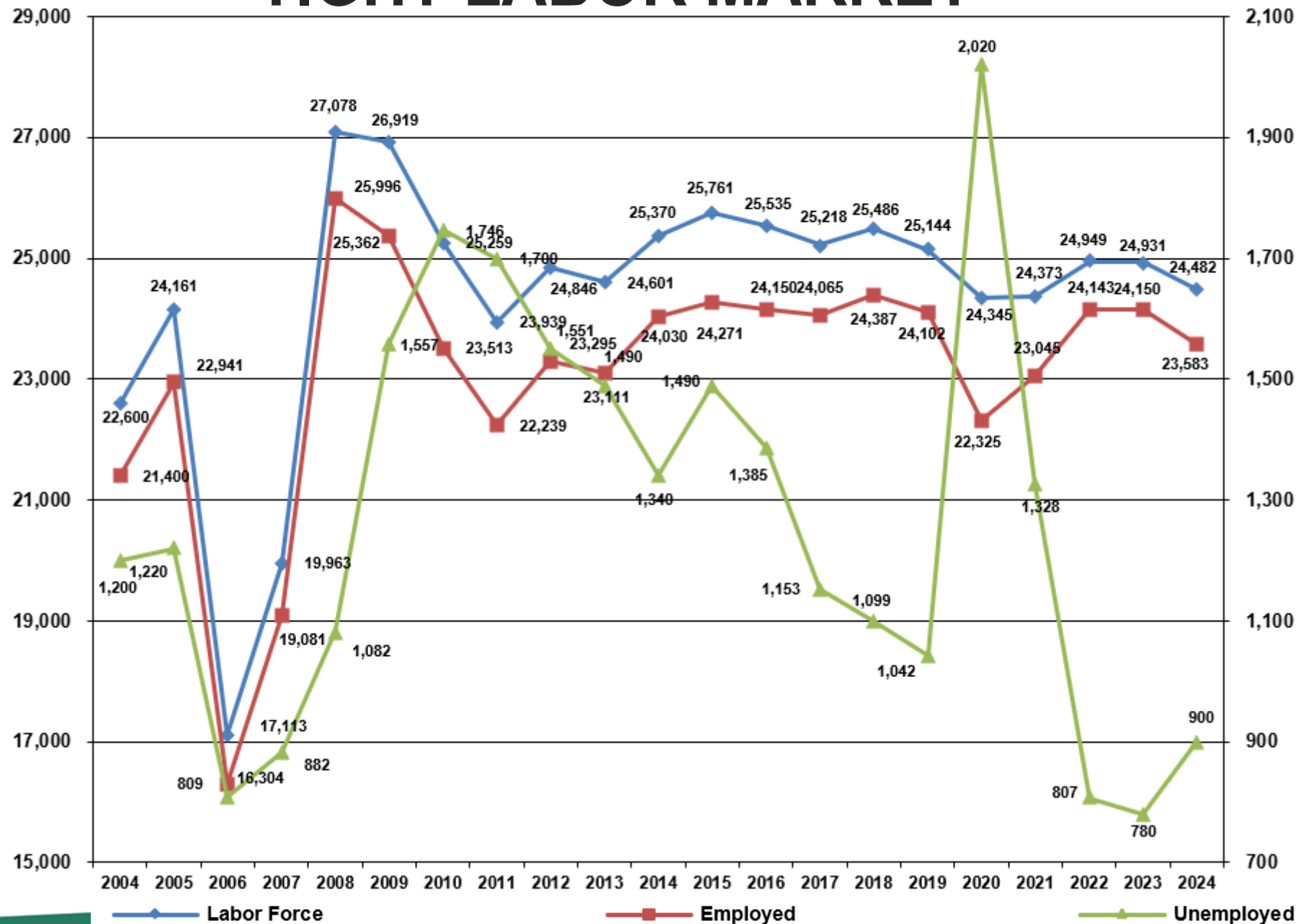
Detailed parish-level data (from left to right, top to bottom):
 Caddo: 4.5; Bossier: 3.8; Webster: 5.1; Calcasieu: 4.0; Jefferson Davis: 4.6; Vermilion: 4.3; Cameron: 3.5; Allen: 4.8; Evangeline: 4.8; Iberville: 4.7; Assumption: 4.9; Terrebonne: 3.9; Lafourche: 3.7; St. Martin: 5.1; St. Mary: 5.1; Iberia: 4.7; Lafayette: 3.7; Acadia: 4.3; St. Landry: 5.1; Avoyelles: 4.6; Rapides: 4.1; Grant: 4.4; Vernon: 4.9; Sabine: 4.4; Natchitoches: 4.8; Bienville: 5.0; Lincoln: 5.1; Jackson: 3.8; Winn: 5.1; Caldwell: 4.9; La Salle: 3.4; Catahoula: 4.9; Concordia: 5.5; Franklin: 5.5; Tensas: 6.8; Madison: 6.3; Richland: 4.8; Ousatche: 4.5; Union: 4.9; Morehouse: 6.4; West Carroll: 7.0; East Carroll: 9.4.

Louisiana Unemployment Rates (Not Seasonally Adjusted)

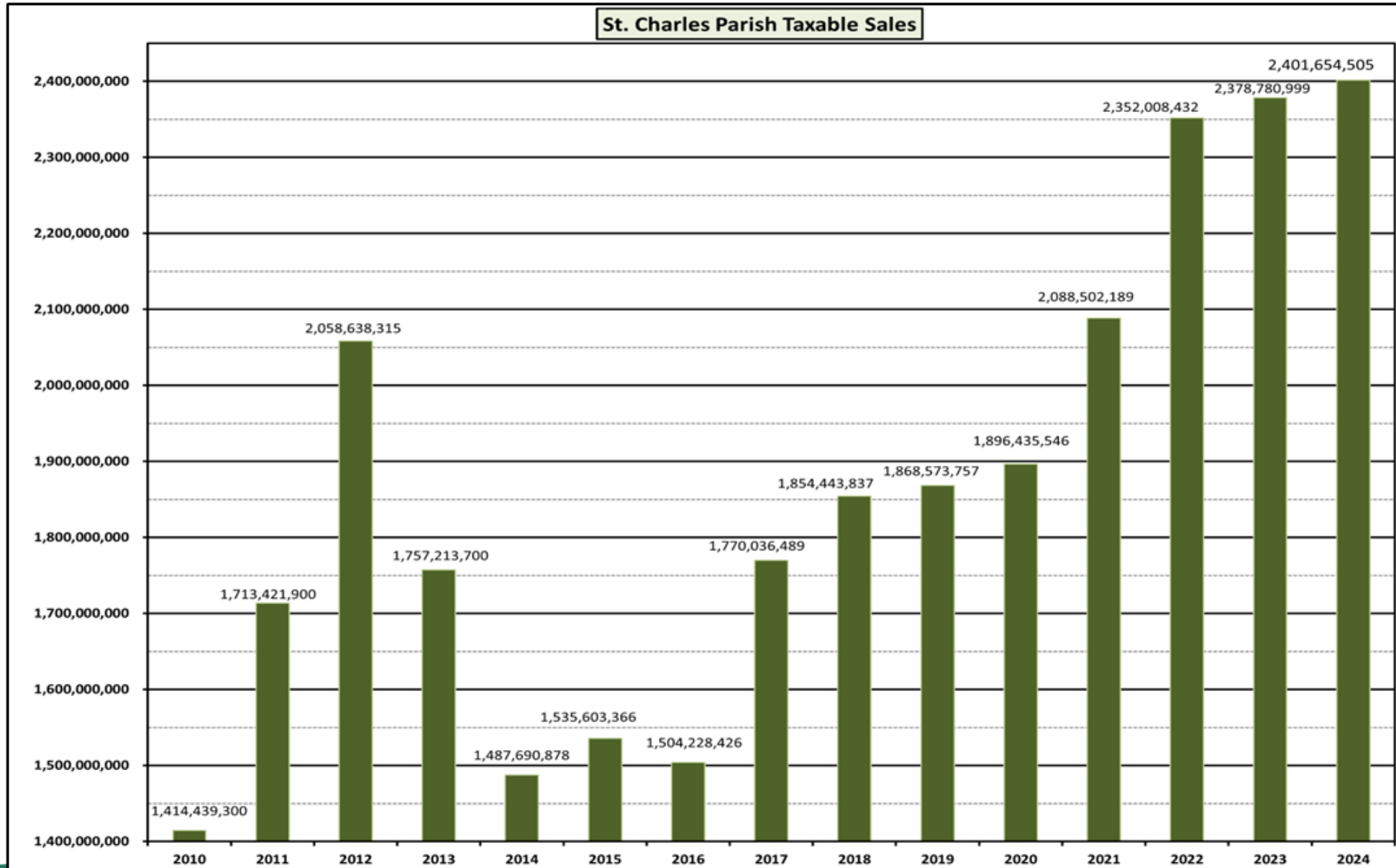
Statewide	4.3 %
Alexandria MSA	4.1 %
Baton Rouge MSA	3.8 %
Hammond MSA	5.0 %
Houma-Thibodaux MSA	3.8 %
Lafayette MSA	4.0 %
Lake Charles MSA	3.9 %
Monroe MSA	4.6 %
New Orleans-Metairie MSA	4.3 %
Shreveport-Bossier City MSA	4.4 %



TIGHT LABOR MARKET



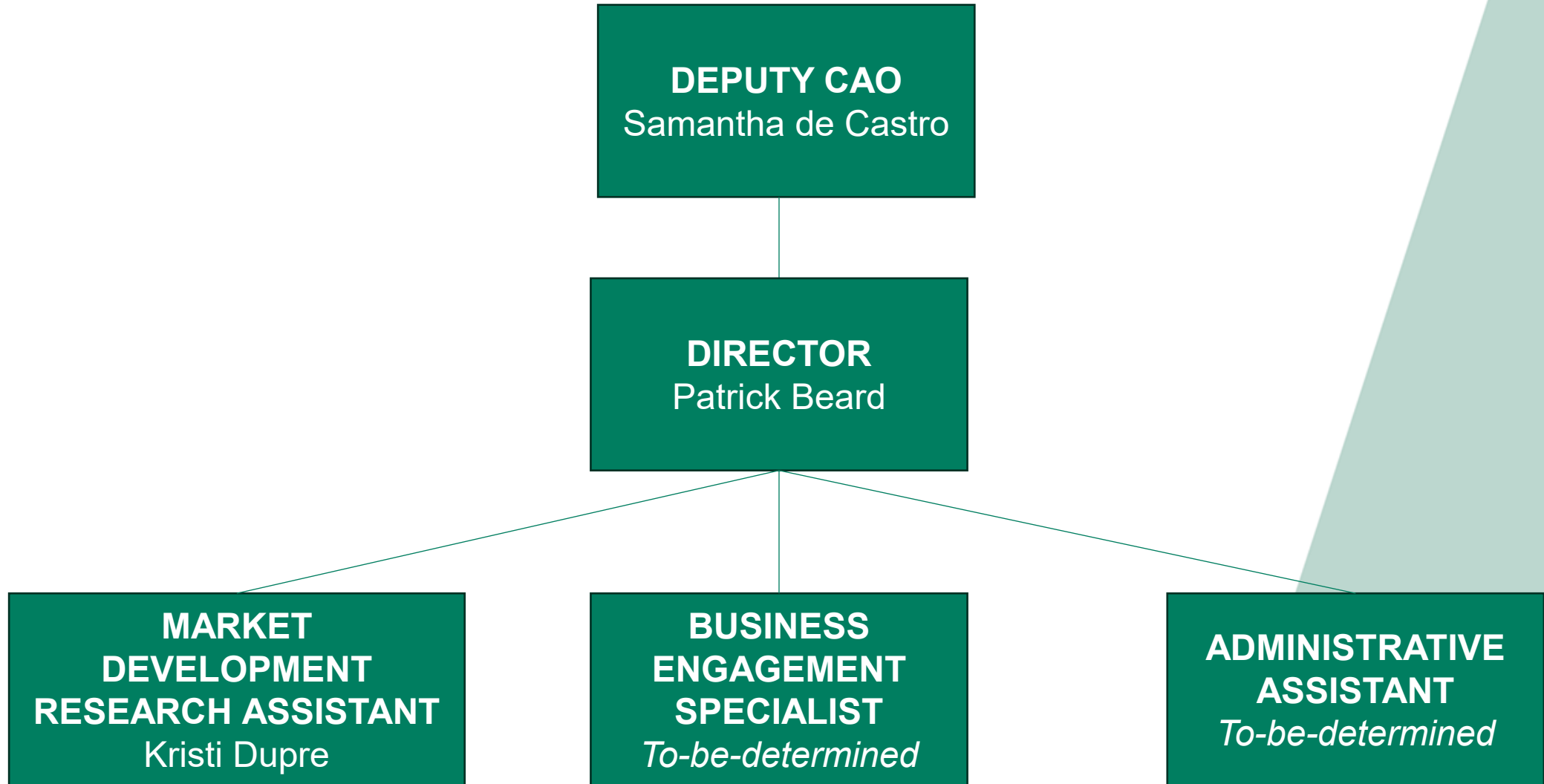
TAXABLE SALES





Departmental Plans 2026

2026 DEPARTMENT CHART



INCREASED SUPPORT OF SMALL AND LOCAL BUSINESSES



ECONOMIC DEVELOPMENT

MEET & GREET

TUESDAY, DECEMBER 9

8:30 - 10 AM

River Parishes
Community College
13145 US-90, Boutte

Come meet Patrick Beard, SCP
Director of Economic
Development, and hear about
the exciting efforts St. Charles
Parish is taking to support and
promote our small and local
businesses.

Let us know you'll be there!
econdev@stcharlesgov.net



STRENGTHEN ALLIED RELATIONSHIPS



GREATER NEW ORLEANS
INC
REGIONAL ECONOMIC DEVELOPMENT



entergy



**PORT OF
SOUTH LOUISIANA**

SCPDC
South Central Planning &
Development Commission

AMERICA'S
SBDC
LOUISIANA



~ LOUISIANA'S ~
RIVER PARISHES





Thank you!

