

# The Parish of St. Charles

August 28, 2023

## IN RECOGNITION

**WHEREAS,** Nathan Elliot Brevelle is a resident of St. Charles Parish, residing in Luling, Louisiana with his parents Brad Brevelle and Amy Oehldrich, brother Daniel Brevelle, sisters Claire Oehldrich and Isabelle Brevelle and, step parents Greg Oehldrich and Jessica Brevelle.

**WHEREAS,** Nathan is a member of Troop 370 chartered by St. Anthony of Padua Catholic Church in Luling; he started his Scouting career August 2011; and,

**WHEREAS,** Nathan has spent the last 12 years as an active member of the Scouts spending the last 7 years preparing to become an EAGLE SCOUT; and,

**WHEREAS,** Nathan has earned his 33 merit badges from a list of 137 badges and completed his Eagle Scout Service Project by constructing dog exercise equipment for the St. Charles Parish Animal Shelter; and,

**WHEREAS,** Nathan earned these 33 merit badges by showing leadership ability as Senior Patrol Leader, Patrol Leader, Instructor, and Bugler; and,

**WHEREAS,** Nathan rose to the rank of EAGLE SCOUT on May 15, 2023, and received his medal in a ceremony on August 5, 2023, at the St. Anthony of Padua Community Activity Building in Luling; and,

**WHEREAS,** Nathan is a 2023 graduate of Hahnville High School, and will continue to grow as an EAGLE SCOUT by providing leadership as an Assistant Scoutmaster for Troop 370.

**NOW THEREFORE, BE IT RESOLVED, WE THE MEMBERS OF THE ST. CHARLES PARISH COUNCIL AND THE PARISH PRESIDENT, do hereby offer this tribute and recognition to**

## NATHAN ELLIOT BREVELLE

"PARISH OF PLENTY"  
created in 1807 from the county of the  
"German Coast", a parish of  
unprecedented economic and social  
development, known for its  
hospitality, rural living and sporting  
opportunities... with the added  
distinction of being located  
on both sides of the  
Mighty Mississippi River.

*Matthew Jewell*

MATTHEW JEWELL  
PARISH PRESIDENT

*Beth Billings*

BETH A. BILLINGS  
COUNCILWOMAN AT LARGE, DIV. A

*Holly Fonseca*

HOLLY FONSECA  
COUNCILWOMAN AT LARGE, DIV. B

*La Sandra Darenbourg Gordon*

LA SANDRA DARENSBOURG GORDON  
COUNCILWOMAN, DISTRICT I

*Mary K. Clulee*

MARY K. CLULEE  
COUNCILWOMAN, DISTRICT II

*Dick Gibbs*

DICK GIBBS  
COUNCILMAN, DISTRICT III

*Nicky Dufrene*

NICKY DUFRENE  
COUNCILMAN, DISTRICT IV

*Marilyn B. Bellock*

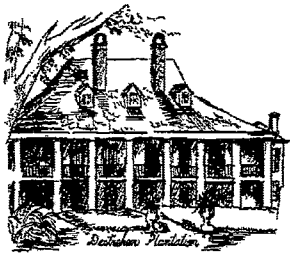
MARILYN B. BELLOCK  
COUNCILWOMAN, DISTRICT V

*Bob Fisher*

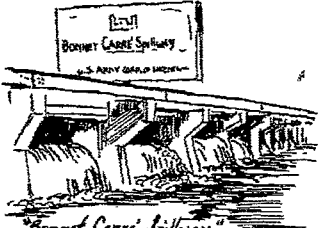
BOB FISHER  
COUNCILMAN, DISTRICT VI

*Julia Fisher-Cormier*

JULIA FISHER-CORMIER  
COUNCILWOMAN, DISTRICT VII



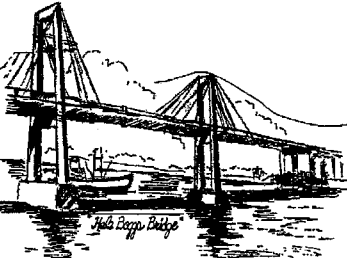
"Dutch Colonial House"



"Bonnet Care's Supply"



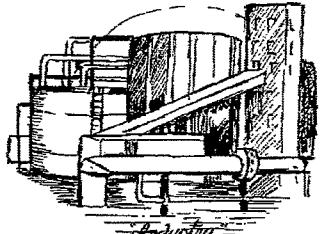
"The Little Red Church"



"Hahnville Bridge"



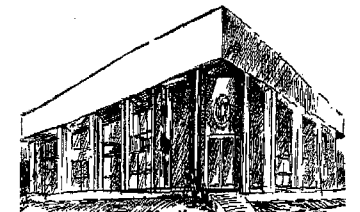
"Hunting and Fishing"



"Industry"



"Luling"



"Community Building"